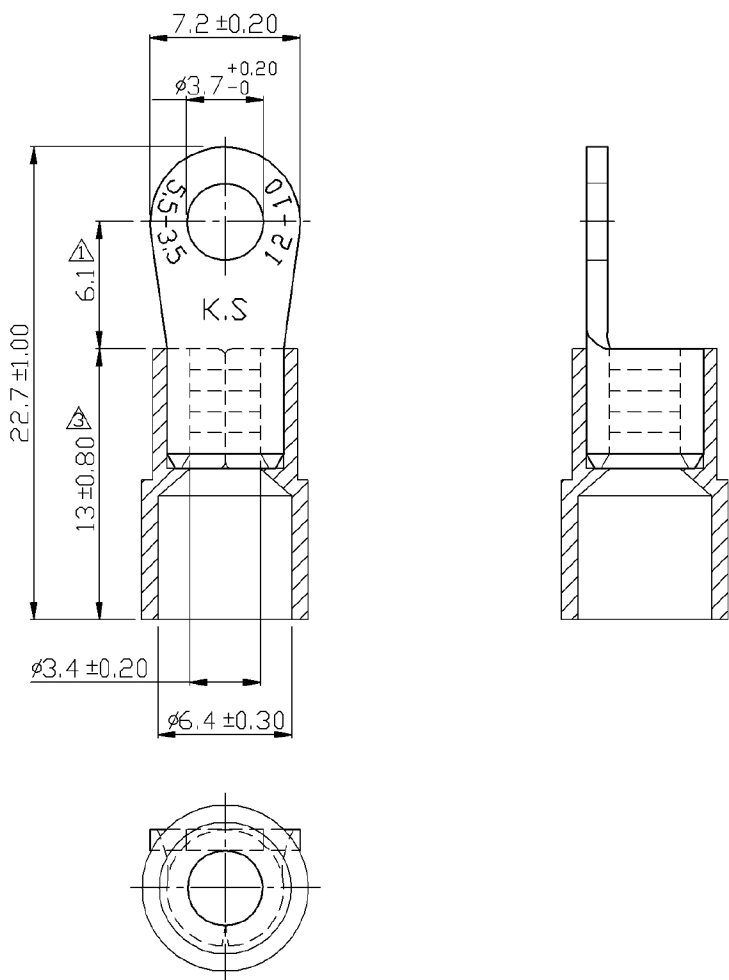


A B C D E F G H

REV	DESCRIPTION	DATE
△	RDK-97127	2009/09/14
△	RDK-98020	2009/09/14
△	RDC-100126	2011/04/11



- NOTE :
1. MAXIMUM ELECTRIC CURRENT :

A.W.G.	12	10	
AMP.	35	50	
 2. MAXIMUM ELECTRICAL RATING : 105°C 600 VOLTS MAX.
 3. INSULATION MATERIAL : NYLON
 4. INSULATION COLOR : YELLOW
 5. TERMINAL MATERIAL : COPPER
 6. WIRE RANGE : 12-10 A.W.G. (4-6 mm²)
 7. TERMINAL SURFACE TREATMENT : TIN PLATED
 8. TERMINAL THICKNESS : 1.0 mm

△	Tolerance Unless	Otherwise Specified
0 >	mm ±	ANGLE
>	mm ±	0° > ° REF ±
>	mm ±	° > ° ±
>	mm ±	° > ° ±

NAME	NYLON-INSULATED RING TERMINALS			UNIT	
PART NO.	RNY5-3.7	MATERIAL	TIN PLATED COPPER TERMINAL	APPROVE	
NUMBER	KA-951140-C	SCALE	SHEET PAGE	CHECKED	
DATE	2006/08/17	3/1	1-3	LOF2	DRAWN

FerrulesDirect

A B C D E F G H