

Notes:

- Maximum Electrical Current:

AWG	12	10	
AMP	35	50	
- Maximum Electrical Rating: 150° 600 Volts
- Terminal Material: Copper
- Wire Range: 12-10 AWG (4-6mm²)
- Terminal Surface Treatment: Tin Plated
- 1/4 Stud Size
- Terminal Thickness: 1.00mm

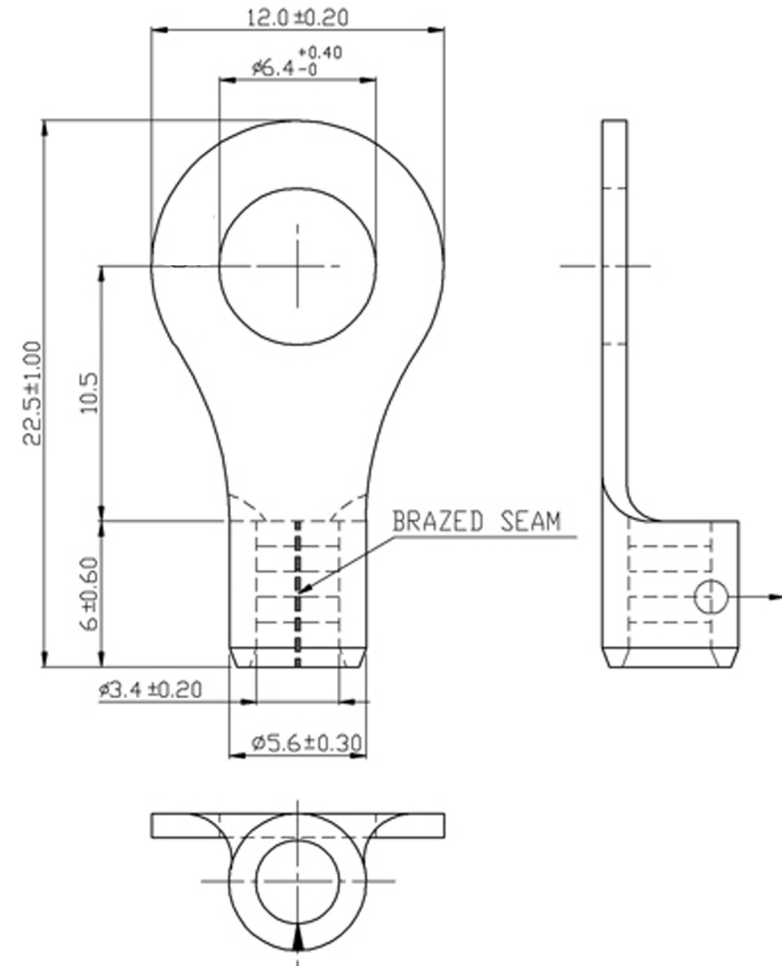
Standard (Metric)

- 0.89" (22.5mm)
- 0.24" (6mm)
- 0.41" (10.5mm)
- 0.47" (12mm)
- 0.25" (6.4mm)
- 0.13" (3.4mm)
- 0.22" (5.6mm)

Tolerances

(Unless Otherwise Specified)

CATEGORY	Non Insulated Ring Terminal	SCALE	4/1
PART #	RNB5-6	SHEET	1-3
MATERIAL	Tin Plated Copper	PAGE	10F2



FerrulesDirect