

Notes:

- Maximum Electrical Current:

AWG	12	10	
AMP	35	50	
- Maximum Electrical Rating: 150° 600 Volts
- Terminal Material: Copper
- Wire Range: 12-10 AWG (4-6mm²)
- Terminal Surface Treatment: Tin Plated
- 3/8 Stud Size
- Terminal Thickness: 1.00mm

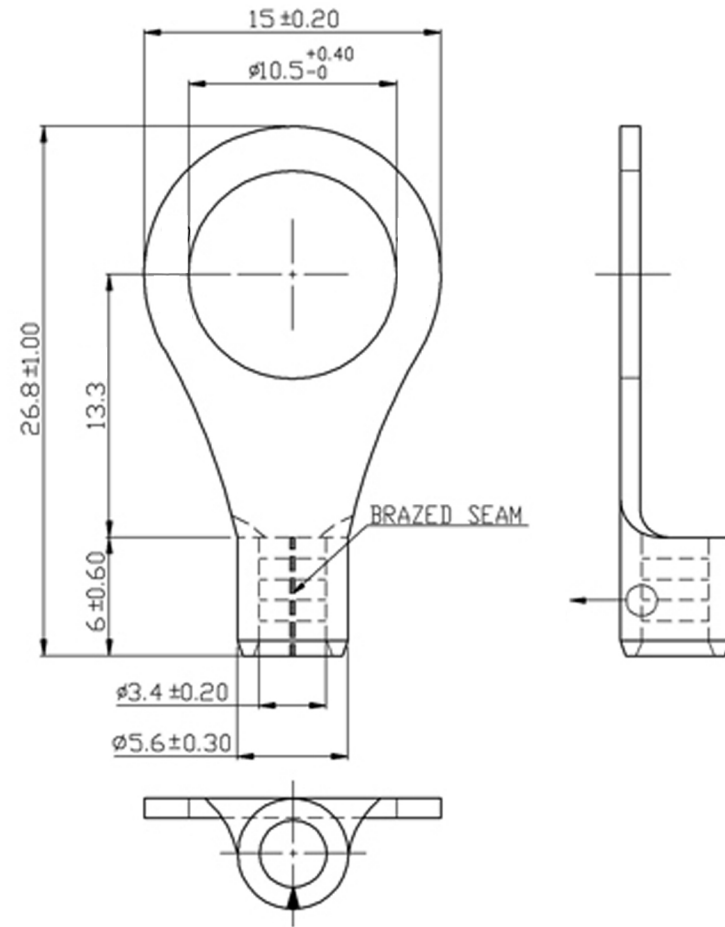
Standard (Metric)

- 1.06" (26.8mm)
- 0.24" (6mm)
- 0.52" (13.3mm)
- 0.59" (15mm)
- 0.41" (10.5mm)
- 0.13" (3.4mm)
- 0.22" (5.6mm)

Tolerances

(Unless Otherwise Specified)

CATEGORY	Non Insulated Ring Terminal	SCALE	3/1
PART #	RNB5-10	SHEET	1-3
MATERIAL	Tin Plated Copper	PAGE	10F3



FerrulesDirect