

Notes:

- Maximum Electrical Current:

AWG	4		
AMP	125		
- Maximum Electrical Rating: 150° 600 Volts
- Terminal Material: Copper
- Wire Range: 4 AWG (22mm²)
- Terminal Surface Treatment: Tin Plated
- 3/8 Stud Size
- Terminal Thickness: 1.70mm

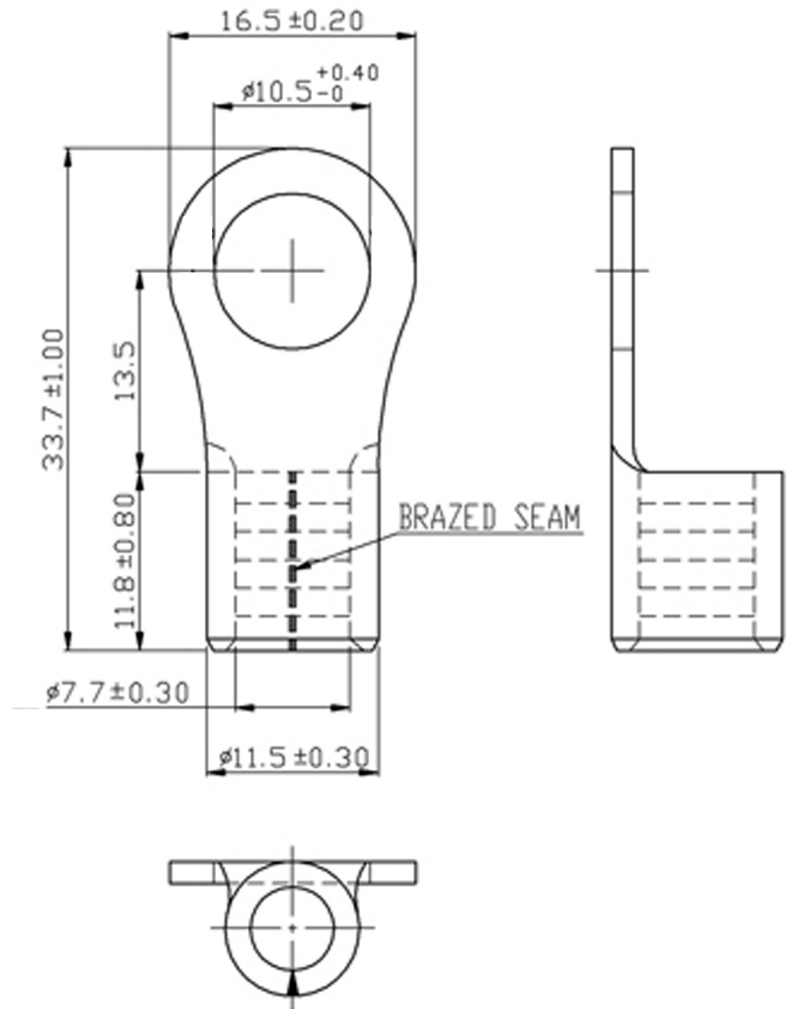
Standard (Metric)

- 1.33" (33.7mm)
- 0.46" (11.8mm)
- 0.53" (13.5mm)
- 0.65" (16.5mm)
- 0.41" (10.5mm)
- 0.30" (7.7mm)
- 0.45" (11.5mm)

Tolerances

(Unless Otherwise Specified)

CATEGORY	Non Insulated Ring Terminal	SCALE	2/1
PART #	RNB22-10	SHEET	1-3
MATERIAL	Tin Plated Copper	PAGE	10F2



FerrulesDirect