

Notes:

1. Maximum Electrical Current:

AWG	12	10	
AMP	35	50	
2. Maximum Electrical Rating: 75° 2000 Volts Max.
3. Terminal Material: Copper
4. Wire Range: 12-10 AWG (4-6mm²)
5. Terminal Surface Treatment: Tin Plated
6. Terminal Thickness: 1.00mm

Standard (Metric)

0.59" (15mm)
 0.21" (5.4mm)
 0.14" (3.5mm)

Tolerances

(Unless Otherwise Specified)

0 > 6mm ± 0.20
 6 > 18mm ± 0.30
 18 > 30mm ± 0.40
 30 > 75mm ± 0.50

CATEGORY

Non Insulated
 Parallel Connector

SCALE

5/1

PART #

PNT5

SHEET

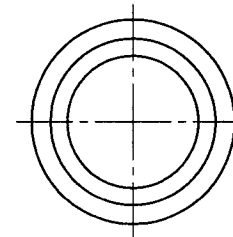
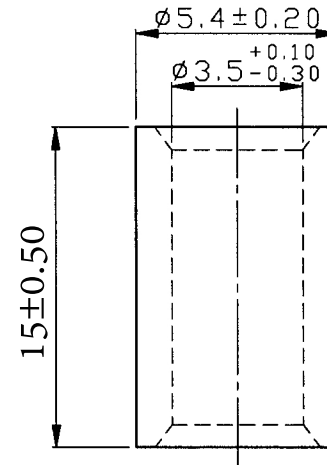
1-0

MATERIAL

Tin Plated Copper

PAGE

10F1



FerrulesDirect