

## Notes:

1. Maximum Amp Rating: 475 AMP
2. Maximum Voltage Rating: 35 KV
3. Color: Green
4. Terminal Material: Copper
5. Wire Size: 750MCM
6. Stud Size: 1/2" Stud
7. Surface Treatment: Tin Plating

### Standard (Metric)

A: 1.30" (33.0mm)  
B: 2.50" (63.5mm)  
C: 1.06" (26.9mm)  
D: 1.90" (48.3mm)  
E: 0.51" (13.0mm)  
G: 0.78" (19.8mm)

### Tolerances

(Unless Otherwise Specified)

Up to 5%

**CATEGORY**

90 Degree  
Compression Lugs

**SCALE**

4/1

**PART #**

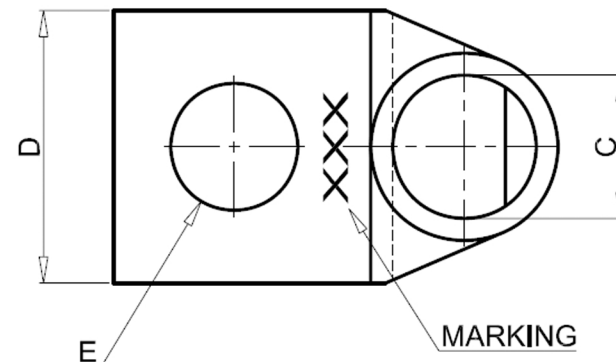
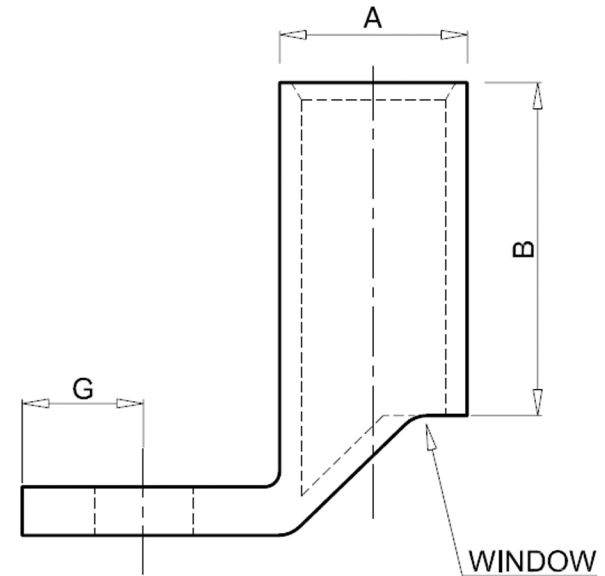
LBF75012

**SHEET**

**MATERIAL**

Tin-Plated Copper

**PAGE**



**FerrulesDirect**