

Notes:

- Maximum Electric Current:

AWG	16	14	
AMP	18	30	
- Maximum Electric Rating: 75°C 2000 Volts Max
- Terminal Material: Copper
- Wire Range: 16-14 AWG (1.5-2.5mm²)
- Terminal Surface Treatment: Tin Plated
- Terminal Thickness: 0.80mm

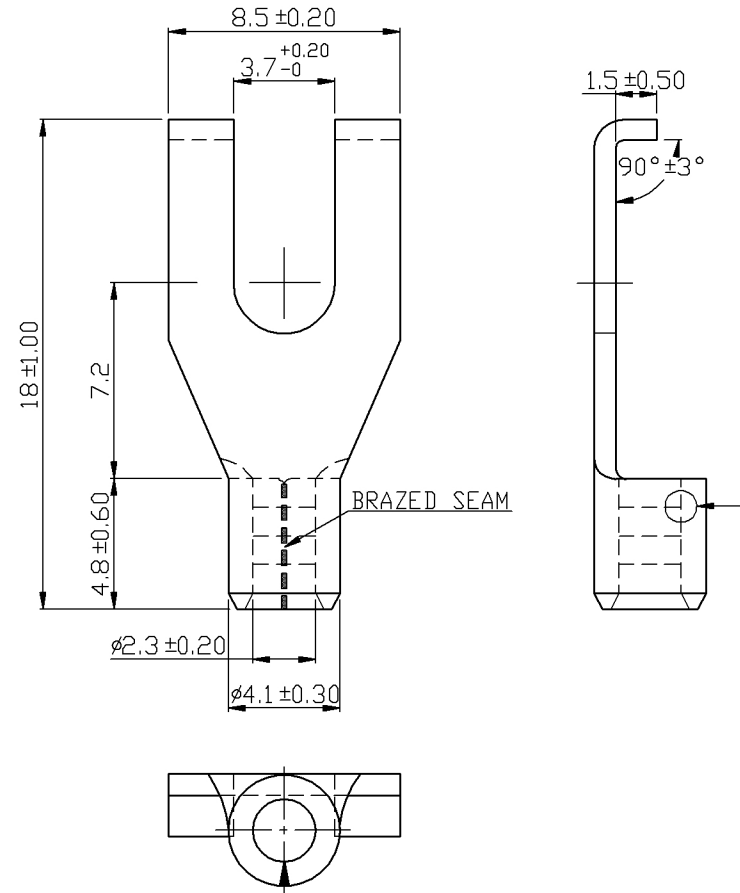
Standard (Metric)

- 0.71" (18mm)
- 0.28" (7.2mm)
- 0.19" (4.8mm)
- 0.33" (8.5mm)
- 0.15" (3.7mm)
- 0.09" (2.3mm)
- 0.16" (4.1mm)
- 0.06" (1.5mm)

Tolerances

(Unless Otherwise Specified)

CATEGORY	Non Insulated Flange Spade Terminals	SCALE	4/1
PART #	FSNBL2-37	SHEET	1-3
MATERIAL	Tin-Plated Copper	PAGE	10F2



FerrulesDirect