

Notes:

- Maximum Electrical Current:

AWG	16	14		
AMP	18	30		
- Maximum Electrical Rating: 105° 600 Volts
- Terminal Material: Copper
- Wire Range: 16-14 AWG (1.5-2.5mm²)
- Thickness: 0.8mm
- Terminal Surface Treatment: Tin Plated
- #10 Stud Size

Standard (Metric)

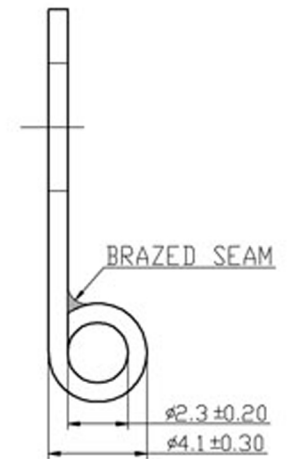
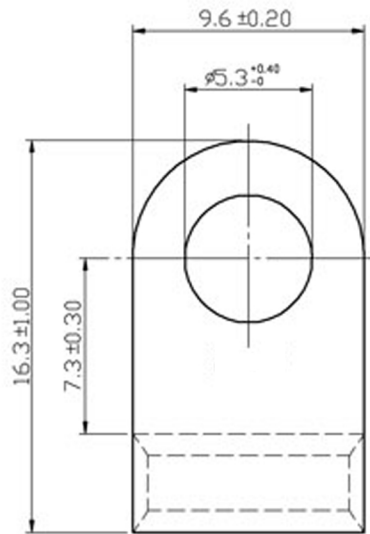
- 0.64" (16.3mm)
- 0.29" (7.3mm)
- 0.38" (9.6mm)
- 0.21" (5.3mm)
- 0.09" (2.3mm)
- 0.16" (4.1mm)

Tolerances

(Unless Otherwise Specified)

- 0 > 6mm ± 0.20
- 6 > 18mm ± 0.30
- 18 > 30mm ± 0.40
- 30 > 75mm ± 0.50

CATEGORY	Non Insulated Flag Terminal - Ring Tongue	SCALE	4/1
PART #	FGNB2-5	SHEET	1-0
MATERIAL	Tin Plated Copper	PAGE	10F2



FerrulesDirect