

Notes:

- Maximum Electric Current:

AWG	16	14	
AMP	18	30	
- Terminal Material: Copper
- Wire Range: 16 -14AWG (1.5-2.5mm²)
- Terminal Surface Treatment: Tin Plated
- Terminal Thickness: 0.80mm

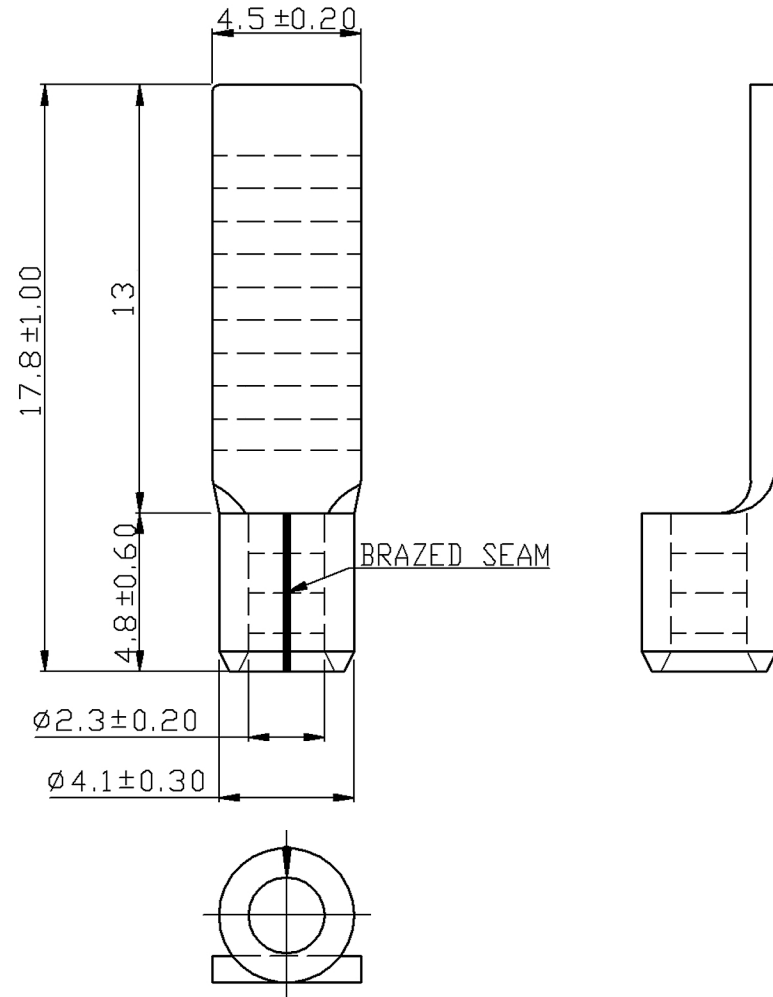
Standard (Metric)

- 0.7" (17.8mm)
- 0.51" (13mm)
- 0.19" (4.8mm)
- 0.18" (4.5mm)
- 0.09" (2.3mm)
- 0.16" (4.1mm)

Tolerances

(Unless Otherwise Specified)

CATEGORY	Uninsulated Flat Blade Terminals	SCALE	4/1
PART #	FBU-213LL	SHEET	1-3
MATERIAL	Tin-Plated Copper	PAGE	10F2



FerrulesDirect