



OUTWORK THE COLD

COLDWORK™

WINTER GLOVES 2024-2025

COLDWORK™

INSULATED WORK GLOVES



❄️ LIGHTWEIGHT (brushed fleece)



05 COLDWORK™
FASTFIT®
CWKFF-58



06 ELEMENT
TSEL-55



21 COLDWORK™
BASE LAYER
CWKBL-55
CWKBL-72



25 TACTICAL
COLDWORK™
FASTFIT®
CWKTF-55
CWKTF-72

❄️❄️ MIDWEIGHT (40g - 100g)



04 SPEEDKNIT
THERMAL
S4DP-05



07 COLDWORK™
ORIGINAL®
CWKMG-58



24 TACTICAL
COLDWORK™
ORIGINAL®
CWKMG-55
CWKMG-72



08 COLDWORK™
WINTER
UTILITY
CWKH15-05



09 FIELD
SERIES™
SUB 40
SUB40-735



10 FIELD
SERIES™
SUB 35
SUB35-735



12 DURAHIDE™
INSULATED
DRIVER
CWKLD-75



13 COLDWORK™
WINDSHELL
CWKWS-58



15 COLDWORK™
M-PACT®
CWKMP-58



23 COLDWORK™
WATERPROOF
LEATHER M-PACT®
DRIVER F9-360
LDMP-XW75

❄️❄️❄️ HEAVYWEIGHT (100g+ Thinsulate)



11 FIELD
SERIES™
SUB 20
SUB20-735



14 COLDWORK™
HI-VIZ CANVAS
GAUNTLET
CWKGLT-91



22 COLDWORK™
FASTFIT® PLUS
CWKFF-55



16 COLDWORK™
PEAK
CWKPK-58



17 COLDWORK™
CANVAS
UTILITY
CWKCU-05



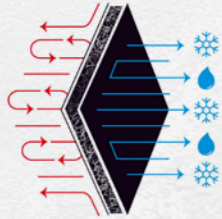
18 COLDWORK™
HEATED GLOVE
CWKHT-05



19 COLDWORK™
HEATED
M-PACT®
CWKMP8-75

COLDWORK™

PERFORMANCE INSULATION TECHNOLOGY



PERFORMANCE INSULATION IS DESIGNED TO TRAP WARM AIR AND REGULATE YOUR BODY TEMPERATURE WITH A HIGH WARMTH-TO-WEIGHT RATIO TO REDUCE BULK.

SYNTHETIC INSULATION ALLOWS MOISTURE TO ESCAPE AND TRAP WARMTH TO PREVENT HEAT LOSS.

THERE IS NO RISK OF MOLD OR MILDEW



THINNEST SYNTHETIC INSULATION AVAILABLE
TRAPS AND HOLDS BODY HEAT WHILE ALLOWING MOISTURE TO ESCAPE
BLOCKS RADIANT HEAT LOSS
WATER RESISTANT SYNTHETIC LOFT



BEST AT MIMICKING DOWN INSULATION AND PERFORMANCE
HIGHEST WARMTH-TO-WEIGHT RATIO
(THE MOST THERMALLY-EFFICIENT INSULATION AVAILABLE)
BREATHABLE TO MOISTURE BUILDUP WHILE RETAINING HEAT
HIGH COMPRESSIBILITY AND LOFT RETENTION,
MAINTAINING SHAPE DURING EXTREME USE



DURAHIDE DRY LEVERAGES THE PROTECTIVE POWER OF A COW LEATHER TO CREATE A NO-WICKING MATERIAL THAT IS OIL PROOF, FLUID PROOF AND WATERPROOF.

EXTREME BREATHABILITY
FLUID REPELLENT
SUPER SOFT



SPEEDKNIT™ THERMAL

S4DP-05

Our SpeedKnit™ S4DP05 Thermal winter gloves come in handy on cold wet days with a lightweight 15-gauge nylon outer and 10 gauge brushed acrylic thermal knit liner to keep your hands insulated from the elements. These gloves are fully dipped to prevent the elements from sneaking in during cold weather work. The working side features touchscreen capable sandy nitrile palm coating so you can work outside with confidence.

FEATURES

- Comfortable 15-gauge knit nylon outer and 10-gauge brushed acrylic thermal liner provide insulation in cold climate.
- Fully nitrile coated fingers and back of hand prevent the elements from sneaking in.
- Insulating compression cuffs provide a secure fit.
- Rugged sandy nitrile palm coating with textured grip offers high abrasion resistance and dry grip performance.
- Touchscreen capable to keep users safe and connected.
- REACH Compliant.



INTENDED FOR FREEZING, WET CONDITIONS

- Cold Storage
- Snow Removal
- Maintenance & Repair
- Construction
- Woodworking
- Manufacturing
- Metalworking
- Home Improvement

CERTIFICATIONS



MIDWEIGHT ❄️❄️



KNIT NYLON OUTER SHELL

BRUSHED ACRYLIC INSULATION

COLDWORK™ FASTFIT®

CWKFF-58

Warm-up the truck and de-ice the windows with our ColdWork™ FastFit® gloves. Stay one step ahead of the cold with comfortable fleece insulation and water-resistant SoftShell to keep the wind from sneaking in. The palm side features our tried and true synthetic leather infused with touchscreen technology so you're always connected.

FEATURES

- Stretch-elastic cuffs create a secure fit to your wrists.
- Water-resistant SoftShell back of hand prevents the cold air from sneaking in.
- Comfortable fleece insulation traps warm air without hindering your dexterity.
- Rugged Armortex® thumb saddle reinforcement.
- Touchscreen capable synthetic leather provides the perfect blend of dexterity and durability.
- Removable spring clip keeps your gloves organized for easy storage.



MACHINE
WASHABLE



TOUCHSCREEN
CAPABLE

INTENDED FOR DRY, COLD APPLICATIONS

- Home
- Automotive
- Manufacturing

CERTIFICATIONS



*RATINGS ARE TO BE CONFIRMED



LIGHTWEIGHT ❄️



WATER-RESISTANT SOFTSHELL

FLEECE INSULATION

ELEMENT

TSEL-55

Brisk temperatures can hinder grip strength your body fights to regulate your body temperature. The Element is a lightweight fleece-lined precision duty glove designed to keep your hands insulated in cold weather. A SoftShell™ outer prevents the wind from sneaking-in, and durable synthetic leather infused with touchscreen capable technology protects your palm in the field.

FEATURES

- Low-profile closure creates a secure fit to your wrist.
- SoftShell™ wind-resistant stretch fabric.
- Comfortable fleece insulation traps warm air without hindering your dexterity.
- Three-dimensional patterning conforms to the natural curvatures of your hand.
- Fleece-lined synthetic leather palm infused with touchscreen technology.
- Nylon carrier loops for storage
- Machine Washable



MACHINE
WASHABLE



TOUCHSCREEN
CAPABLE

INTENDED FOR DRY, COLD APPLICATIONS

- Military
- Law Enforcement
- Shooting Sports

CERTIFICATIONS



NOT TESTED
IN EN 511 COLD



LIGHTWEIGHT ❄️



WIND-RESISTANT SOFTSHELL

FLEECE-LINED SYNTHETIC LEATHER PALM

COLDWORK™ ORIGINAL®

CWKMG-58

Brisk, cold air can make even the simplest task more burdensome, so we built our ColdWork™ Original® with C40 3M Thinsulate™ Insulation to lock in warmth and keep you moving. The back of your hand is protected by water-resistant SoftShell to prevent the wind from sneaking in during cold weather work. The palm side features our tried and true synthetic leather infused with touchscreen technology so you're always connected.

FEATURES

- Thermoplastic Rubber (TPR) closure creates a secure fit to your wrist.
- Heavyweight fleece construction.
- Water-resistant SoftShell back of hand prevents the cold air from sneaking in.
- C40 3M Thinsulate Insulation traps warm air to help regulate your body temperature.
- Rugged Armortex® thumb saddle reinforcement.
- Touchscreen capable synthetic leather provides the perfect blend of dexterity and durability.
- Removable spring clip keeps your gloves organized for easy storage.



MACHINE
WASHABLE



TOUCHSCREEN
CAPABLE

INTENDED FOR DRY, COLD APPLICATIONS

- Home
- Automotive
- Manufacturing

CERTIFICATIONS



MIDWEIGHT ❄️❄️



WATER-RESISTANT SOFTSHELL

C40 3M THINSULATE™ INSULATION

3M
THINSULATE™
Insulation

COLDWORK™ WINTER UTILITY

CWKH15-05

Stay one step ahead of the cold this season. Our ColdWork™ Winter Utility winter gloves encase your hands with 40g PrimaLoft® Gold Insulation to block cold air from sneaking in. The working side features 60g PrimaLoft® Gold Insulation to fight cold temperatures while you work. The Winter Utility is touchscreen capable and ready for all your winter adventures.

FEATURES

- Comfortable stretch-elastic cuffs deliver a secure fit.
- Lightweight fleece outer with water and wind resistant soft shell back of hand protects fingers and knuckle area.
- 40g PrimaLoft® Gold back of hand insulation.
- 60g PrimaLoft® Gold palm insulation.
- Water-resistant palm with touchscreen capability.
- Removable spring clips keep your gloves organized for easy storage.



MACHINE
WASHABLE



TOUCHSCREEN
CAPABLE

INTENDED FOR WINTER LIFESTYLE

- Snow Removal
- Cold Storage
- Maintenance & Repair
- Equipment Operation
- Home Improvement

CERTIFICATIONS



MIDWEIGHT ❄️❄️



WATER AND WIND RESISTANT SOFTSHELL

PRIMALOFT 40G BACK 60G PALM



FIELD SERIES™ SUB40

SUB40-735

Mechanix Wear's SUB40 winter gloves feature Realtree Edge™ camouflage and 3M 40g Thinsulate to keep you concealed and insulated in the field. We incorporated a waterproof barrier, touchscreen technology and our no-slip Padlock™ grip to battle the elements.

FEATURES

- Easy On/Off elastic cuff designs ensures gloves get put on when the temperature drops
- Realtree Edge™ camouflage pattern allows you to blend in with the terrain.
- 40g 3M Thinsulate™ efficiently traps heat, keeping hands warm
- Flexible waterproof membrane throughout
- Abrasion-resistant thumb saddle reinforcement for heavy lifting.
- Embossed trigger finger design relieves bunching to increase dexterity where it matters
- Padlock™ no-slip silicon print improves your grip performance in the field.
- Durable synthetic leather infused with touchscreen technology to control your devices.
- 3mm foam palm padding provides comfort and relief when hauling your gear in the field.
- Removable spring clip keeps your gloves together and organized.



MACHINE
WASHABLE



TOUCHSCREEN
CAPABLE

INTENDED FOR FREEZING, WET CONDITIONS

- Winter Recreation
- Shooting / Hunting
- Bow Hunting

CERTIFICATIONS



2132XX

120



MIDWEIGHT ❄️❄️

WATERPROOF SOFTSHELL

40g 3M THINSULATE

3M
THINSULATE™
Insulation

09

FIELD SERIES™ SUB35

SUB35-735

Mechanix Wear's SUB35 winter gloves feature Realtree Edge™ camouflage and 3M 40g Thinsulate™ to keep you concealed and insulated in the field. We incorporated a waterproof barrier and our touchscreen technology to battle the elements.

FEATURES

- Extended hook and loop top closure secures comfortable to your wrist.
- Realtree Edge™ camouflage pattern allows you to blend in with the terrain.
- 40g 3M Thinsulate™ efficiently traps heat, keeping hands warm.
- Waterproof barrier keeps your hands dry and warm in rain, sleet or snow.
- Abrasion-resistant thumb saddle reinforcement for heavy lifting.
- Ergonomic trigger finger design for precision and control.
- Padlock™ no-slip silicon print improves your grip performance in the field.
- Durable synthetic leather infused with touchscreen technology to control your devices.
- 3mm foam palm padding provides comfort and relief when hauling your gear in the field.
- Removable spring clip keeps your gloves together and organized.



MACHINE
WASHABLE



TOUCHSCREEN
CAPABLE

INTENDED FOR FREEZING, WET CONDITIONS

- Winter Recreation
- Shooting / Hunting
- Bow Hunting

CERTIFICATIONS



EN 388
2222XX



EN 511
120



MIDWEIGHT ❄️❄️

WATERPROOF SOFTSHELL

40g 3M THINSULATE

3M
THINSULATE™
Insulation

010

FIELD SERIES™ SUB20

SUB20-735

Mechanix Wear's SUB20 winter gloves feature Realtree Edge™ camouflage and 3M 100g Thinsulate™ to keep you concealed and insulated in the field. We incorporated a waterproof barrier, internal pouch to add HotHands®, touchscreen technology, and our no-slip Padlock™ grip to battle the elements.

FEATURES

- Full extension gauntlet cuff design is slim enough to fit under a jacket.
- Realtree Edge™ camouflage pattern allows you to blend in with the terrain.
- 100g 3M Thinsulate™ provides warmth in the most extreme conditions.
- Hypora waterproof membrane creates increased insulation while providing a durable and flexible barrier of protection
- Multilayer rubberized palm construction provides waterproofing at the point of contact
- Embossed trigger finger design relieves bunching to increase dexterity where it matters
- Padlock™ no-slip silicon print improves your grip performance in the field.
- Durable synthetic leather infused with touchscreen technology to control your devices.
- HotHands® pouch inside gauntlet warms blood flow into hands.
- Removable spring clip keeps your gloves together and organized.



INTENDED FOR FREEZING, WET CONDITIONS

- Winter Recreation
- Shooting / Hunting
- Bow Hunting

CERTIFICATIONS



HEAVYWEIGHT ❄️❄️❄️

WATERPROOF SOFTSHELL

100g 3M THINSULATE INSULATION

3M
THINSULATE™
Insulation

DURAHIDE™ INSULATED DRIVER

CWKLD-75

Whether its winter work or winter casual, our Durahide™ Insulated Driver gloves get the job done, comfortably. Our Insulated Driver is cut and sewn from Durahide DRY™ cowhide, lined with soft Sherpa, and insulated with C40 3M Thinsulate™ synthetic down.

FEATURES

- Comfortable stretch-elastic cuff delivers a secure fit to the wrist.
- Durahide™ DRY™ leather construction is fluid resistant yet breathable, and ready to work with no break-in time.
- C40 3M™ Thinsulate™ traps warm air to help regulate your body temperature in cold environments.
- Heavyweight Sherpa lining keeps working hands warm and wicks moisture to keep them dry.
- Gunn cut finger design repositions vulnerable seams for improved durability.
- Comfortable keystone thumb design.



INTENDED FOR DIY & TRADE PROFESSIONALS

- Home Improvement
- Construction

CERTIFICATIONS



MIDWEIGHT ❄️❄️

DURAHIDE™
LEATHER TECHNOLOGY

3M
THINSULATE™
Insulation

WATER-RESISTANT DURAHIDE SHELL

C40 3M THINSULATE™ INSULATION

COLDWORK™ WINDSHELL

CWKWS-58

When the wind picks up and the cold front moves in, reach for our ColdWork™ Wind Shell gloves to ward off the elements. Comfortable micro-fleece lines the entire glove and PrimaLoft® Gold encases your hands with a combo of 40g and 60g insulation to reduce bulk. The WindShell features an internally bonded wind barrier to prevent cold air from pushing through when the gusts are strong.

FEATURES

- Extended cuff with hook and loop wrist closure creates a secure fit.
- Heavyweight fleece construction with water-resistant soft shell back of hand protection.
- PrimaLoft® 40g Gold performance back of hand insulation.
- Rugged Armortex® thumb saddle reinforcement and fingertip reinforcement.
- Rugged Armortex® palm resists water and restores grip.
- PrimaLoft® 60g Gold performance palm insulation.
- Touchscreen capable index finger keeps you connected in cold conditions.
- Removable spring clip keeps your gloves organized for easy storage.



INTENDED FOR DRY, COLD APPLICATIONS

- Snow Removal
- Chain Installation

CERTIFICATIONS



MIDWEIGHT ❄️❄️



WATER-RESISTANT SOFTSHELL

PRIMALOFT 40G BACK 60G PALM

COLDWORK™

HI-VIZ CANVAS GAUNTLET

CWKGLT-91

The ColdWork Hi-Viz Canvas Leather Gauntlet work gloves leverage fluorescent and 3M Scotchlite reflective materials to ensure maximum visibility in hazardous and low light work environments. The heavy duty C6 treated canvas, water-resistant and wind proof Hi-Viz poly shell, Durahide™ leather palm helps repel water and oily substances while the 100g 3M™ Thinsulate™ insulation delivers essential warmth when working in the coldest conditions. This versatile work glove features 3mm EVA knuckle padding, gunn cut finger design for improved durability and a longer wider cuff for easy use with heavy jackets.

FEATURES

- C6 water repellent treated heavy-duty treated canvas easily repels water and oils without sacrificing durability
- 100g 3M™ Thinsulate™ insulation keeps hands warm and comfortable
- Water resistant & wind proof Hi-vis Poly shell
- 3mm EVA foam delivers optimal knuckle protection
- Palm constructed with Durahide™ Leather Technology provides additional water resistance
- Gunn cut finger design repositions vulnerable seams for improved durability
- 3M SCOTCHLITE reflective band on the cuff for improved visibility
- A longer and wider cuff allows ease of use over any jacket



MACHINE WASHABLE



TOUCHSCREEN CAPABLE

INTENDED FOR DRY, COLD APPLICATIONS

- Maintenance & Repair
- Construction
- Agriculture
- Home Improvement

CERTIFICATIONS



HEAVYWEIGHT ❄️❄️❄️



DURAHIDE™
LEATHER TECHNOLOGY

3M
THINSULATE™
Insulation

HEAVY DUTY CANVAS

100G 3M™ THINSULATE™ INSULATION

COLDWORK™ M-PACT®

CWKMP-58

When the mercury drops, reach for our ColdWork™ M-Pact gloves. Stay one step ahead of the cold with C40 3M Thinsulate™ Insulation and water-resistant SoftShell to keep the brisk air from sneaking in. When the going gets rough, we incorporated an anatomical Thermoplastic Rubber (TPR) exoskeleton that meets ANSI 138 Level 2 impact standard. The palm side features our tried and true synthetic leather infused with touchscreen technology, and dedicated D30 palm padding for comfort.

FEATURES

- Thermoplastic Rubber (TPR) closure creates a secure fit to your wrist.
- Thermoplastic Rubber (TPR) impact protection meets ANSI 138 Level 2 impact standard.
- Water-resistant SoftShell back of hand and laminated wind barrier provides critical wind-resistance.
- C40 3M Thinsulate traps warm air to help regulate your body temperature.
- Thumb, internal fingertip and palm reinforcement provides added durability.
- Touchscreen capable synthetic leather.
- D30® palm padding absorbs and dissipates high-impact energy.
- Removable spring clip keeps your gloves organized for easy storage.



MACHINE
WASHABLE

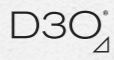


TOUCHSCREEN
CAPABLE

INTENDED FOR DRY, COLD APPLICATIONS

- Automotive
- Construction
- Manufacturing

CERTIFICATIONS



MIDWEIGHT ❄️❄️



LAMINATED WIND BARRIER SHELL

C40 3M THINSULATE™ INSULATION

3M
THINSULATE™
Insulation

COLDWORK™ PEAK

CWKPK-58

When there's work at the top, reach for our ColdWork™ Peak gloves with PrimaLoft Gold 100g insulation and a waterproof barrier. The Peak is constructed with a water repellent SoftShell outer including a rugged 5mm padded knuckle for impact protection while you work. The palm features Armortex® water-resistant grip and touchscreen capable index finger.

FEATURES

- Extended gauntlet cuff with adjustable ladder lock pull tab.
- Water-repellent SoftShell outer.
- 5mm padded knuckle protection.
- PrimaLoft® 100g Gold performance insulation.
- Rugged Armortex® thumb saddle reinforcement and fingertip reinforcement.
- Waterproof barrier keeps your hands dry and warm in rain, sleet or snow.
- Rugged Armortex® palm resists water and restores grip.
- Touchscreen capable index finger keeps you connected in cold conditions.
- Removable spring clip keeps your gloves organized for easy storage.



MACHINE
WASHABLE



TOUCHSCREEN
CAPABLE

INTENDED FOR FREEZING, WET CONDITIONS

- Vehicle Recovery
- Construction
- Oil & Gas
- Heavy Equipment Operation

CERTIFICATIONS



HEAVYWEIGHT ❄️❄️❄️



WATER REPELLENT SOFTSHELL

PRIMALOFT 100G INSULATION PALM

COLDWORK™

CANVAS UTILITY

CWKCU-05

The cold does not back down to the work, and neither should your gloves. The ColdWork™ Canvas Utility is constructed with water resistant heavy-duty canvas back of hand and a water and abrasion resistant Durahide™ Leather Technology infused palm creating a rugged winter outer shell that stands up to both abrasion hazards and cold weather environments. 100g 3M™ Thinsulate™ insulation paired with a soft sherpa lining and a snug fitting knit cuff locks in warmth while 3mm EVA foam knuckle padding protects against mild impacts. This glove is the perfect solution for those looking for durable protection, maximum warmth, and premium comfort.

FEATURES

- C6 water repellent treated heavy-duty canvas easily repels water and oils without sacrificing durability.
- 100g 3M™ Thinsulate™ with Soft Sherpa lining keeps hands warm and comfortable.
- Water and abrasion resistant Durahide™ Leather technology infused palm and fingers.
- 3mm EVA foam provides optimal knuckle protection.
- Gunn cut finger design repositions vulnerable seams for improved durability.
- Heavy-weight tubular knit cuff secures the glove and locks in warmth.



MACHINE
WASHABLE



TOUCHSCREEN
CAPABLE

INTENDED FOR DRY, COLD APPLICATIONS

- Maintenance & Repair
- Construction
- Agriculture
- Home Improvement

CERTIFICATIONS



HEAVYWEIGHT ❄️❄️❄️

HEAVY DUTY CANVAS

100G 3M™ THINSULATE™ INSULATION

DURAHIDE™
LEATHER TECHNOLOGY

3M
THINSULATE™
Insulation

COLDWORK™

HEATED GLOVE

CWKHT-05

The ColdWork™ Heated Glove continues the line of groundbreaking product that delivers an intelligent, self-regulating, and activating Thermal Technology Heating System from Mechanix Wear and clim8®. Ultimate insulation of 133g Primaloft® wraps the hand locking in warmth while the water-resistant SoftShell repels the elements. Combining Padlock™ Grip Technology on the fingers and palm area with touchscreen capable synthetic leather and this glove ensure that your regulated warmth keeps you working in the harshest winter conditions.

FEATURES

- clim8® intelligent Thermal Technology Heating System that automatically turns on when glove is placed on hand.
- Heating system adjusts and regulates internal temperature based on body and outside temperatures for optimum hand warmth & temperature at all times.
- Easily accessible waterproof battery pouch for easy charging and connectivity.
- Downloadable companion app for ability to personalize and easily adjust the thermal comfort to your exact needs.
- Indicator light that notifies users when the glove is actively heating.
- Stretchable & breathable water-resistant SoftShell outer and finger gussets provides comfort and mobility.
- Padlock™ Grip silicone print on palm and fingers.
- Constructed with a Hipora water-proof bag.
- Primaloft® Gold 133g is thin and dexterous while wrapping the hand to lock in warmth.
- Touchscreen capable rolover fingertips for increased durability.
- Pre-curved construction provides an improved fit and feel.



MACHINE WASHABLE



TOUCHSCREEN CAPABLE

INTENDED FOR FREEZING, WET CONDITIONS

- Maintenance & Repair
- Snow Removal
- Towing & Transport
- Construction

CERTIFICATIONS



HEAVYWEIGHT ❄️❄️❄️



WATER RESISTANT SOFTSHELL

133g PRIMALOFT® INSULATION

COLDWORK™ M-PACT® HEATED GLOVE

CWKMP8-75

The ColdWork™ M-Pact® Heated Glove is a groundbreaking product that delivers an intelligent, self-regulating, and activating Thermal Technology Heating System from clim8®, the strength of Durahide™ cowhide, ultimate insulation from 133g Primaloft®, and maximum knuckle protection from 4mm D30®. This glove combines revolutionary technology, materials, and protection to ensure that you are warm and can work in the harshest winter conditions.

FEATURES

- clim8® intelligent Thermal Technology Heating System that automatically turns on when glove is placed on hand.
- Heating system adjusts and regulates internal temperature based on body and outside temperatures for optimum hand warmth & temperature at all times.
- Easily accessible waterproof battery pouch for easy charging and connectivity.
- Downloadable companion app for ability to personalize and easily adjust the thermal comfort to your exact needs.
- Indicator light that notifies users when the glove is actively heating.
- Built with Super soft Durahide™ Cow hide glove with heavy duty nylon stitching throughout for maximum strength.
- Insulated with 133g Primaloft® Gold throughout for ultimate insulation in the most extreme conditions.
- 4mm D30® padding on knuckles and back of hand for increased impact protection.
- Reflective Piping on back of hand for high visibility at night.
- Ergonomic palm design and hot stamp texture for maximum grip.
- Touchscreen capable finger to ensure you are always connected.



MACHINE
WASHABLE



TOUCHSCREEN
CAPABLE

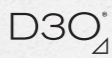
INTENDED FOR FREEZING, WET CONDITIONS

- Maintenance & Repair
- Snow Removal
- Towing & Transport
- Construction

CERTIFICATIONS



DURAHIDE™ LEATHER
TECHNOLOGY



WATERPROOF SOFTSHELL

133g PRIMALOFT® INSULATION



HEAVYWEIGHT ❄️❄️❄️



DURAHIDE™
LEATHER TECHNOLOGY



COLDWORK™ BASE LAYER

CWKBL-55

Light-weight and versatile, the ColdWork™ Base Layer is loaded with features to combat the cold and provide extreme dexterity. A thin microfleece lined stretch SoftShell wraps the hand providing warmth and flexibility. Sleek enough to be used as a base layer in combination with another glove, it also has a water repellent treatment to stand on its own against the elements. A rollover cuff design creates a secure fit while keeping out the elements. The palm combines touchscreen capable thumb and index finger patches with a Padlock™ silicone grip pattern to provide improved grip strength and ultimate functionality in cold environments.

FEATURES

- Water resistant stretch SoftShell construction prevents the cold air from sneaking in.
- Micro fleece lining adds warmth and provides exceptional comfort.
- Sleek, low-profile design allows the glove to be used as a liner or on its own.
- Touchscreen capable thumb and index finger patches.
- Padlock™ no-slip silicone grip palm pattern.
- Rollover cuff design creates a secure fit while keeping out the elements.
- Nylon carrier loop for quick storage.



MACHINE
WASHABLE



TOUCHSCREEN
CAPABLE



PADLOCK™
SILICONE GRIP

INTENDED FOR DRY, COLD APPLICATIONS

- Weapons Manipulation
- Snow Removal
- Cold Storage
- Maintenance & Repair
- Equipment Operation
- Home Improvement



LIGHTWEIGHT ❄️

Also available as Coyote



WATER RESISTANT SHELL

TOUCHSCREEN CAPABLE THUMB AND INDEX

COLDWORK™ FASTFIT® PLUS

CWKFF-55

Take cold weather protection to the next level with ColdWork™ FastFit® Plus. A multi-layered 3M™ Thinsulate™ design provides warmth while maintaining dexterity in the palm. A water-resistant SoftShell keeps the wind from sneaking in while the flared outer cuff and extended inner fleece cuff system extends protection and can interact with jackets to seal out the elements. The touchscreen capable and water-repellent treated palm is reinforced in high-wear areas to increase grip and durability, leveling up this glove's protection beyond the iconic ColdWork™ FastFit®.

FEATURES

- Stretch-elastic cuffs create a secure fit to your wrists.
- Touchscreen capable synthetic leather provides the perfect blend of dexterity and durability.
- 100g 3M™ Thinsulate™ back of hand insulation.
- 40g 3M™ Thinsulate™ palm insulation.
- Water-resistant stretch SoftShell repels the elements.
- Durable water-resistant and touchscreen capable synthetic leather palm.
- Abrasion resistant reinforced panels.
- Tactical storage loop.



MACHINE
WASHABLE



TOUCHSCREEN
CAPABLE

INTENDED FOR DRY, COLD APPLICATIONS

- Snow Removal
- Cold Storage
- Maintenance & Repair
- Equipment Operation
- Home Improvement

CERTIFICATIONS



HEAVYWEIGHT ❄️❄️❄️

MULTI-LAYERED 3M™ THINSULATE™ DESIGN

TOUCHSCREEN CAPABLE SYNTHETIC LEATHER

3M
THINSULATE™
Insulation

NEW WINTER GLOVES

SEASON 2024-25



**COLDWORK™ WATERPROOF
LEATHER M-PACT®
DRIVER F9-360**

LDMP-XW75

MSRP
€ 66,29 | £ 58,29 | \$ 66,29



**TACTICAL COLDWORK™
ORIGINAL®**

CWKMG-55 | CWKMG-72

MSRP
€ 21,99 | £ 19,39 | \$ 21,99



**TACTICAL COLDWORK™
FASTFIT®**

CWKTF-55 | CWKTF-72

MSRP
€ 21,99 | £ 19,39 | \$ 21,99

COLDWORK™

WATERPROOF LEATHER M-PACT® DRIVER F9-360®

LDMP-XW75

Easily handle the most extreme weather working conditions with the ColdWork™ Waterproof Leather M-Pact® Insulated Driver F9-360. Fend off the elements with 100g PrimaLoft® Gold performance insulation that traps warm air and regulates your body temperature in freezing conditions while the HiPora® waterproof membrane repels water and fluid. Featuring our proprietary Durahide™ Leather Technology and an internal HPPE liner to protect working hands with EN 388 Level F & ANSI A9 cut resistance and EN 388 Level 4 abrasion resistance. To further defend against rugged working conditions there is an anatomical Thermoplastic Rubber (TPR) exoskeleton that meets EN 13594 & ANSI 138 Level 2 rated impact standards.

FEATURES

- Constructed with a HiPora® waterproof membrane.
- Extended stretch-elastic cuffs with internal wrist gaiter
- 100g PrimaLoft® Gold performance insulation.
- Anatomical Thermoplastic Rubber (TPR) exoskeleton meets EN 13594 & ANSI 138 Level 2 rated impact standards.
- HPPE liner combined with Durahide™ Leather provides EN 388 Level F & ANSI A9 cut resistance.
- Durahide™ Leather Technology delivers EN 388 Level 4 abrasion resistance.
- Comfortable keystone thumb design and Gunn cut fingers reposition vulnerable seams.



MACHINE
WASHABLE

INTENDED FOR DRY, COLD APPLICATIONS

- Maintenance & Repair
- Construction
- Cold Storage
- Oil & Gas
- Mining
- Rigging
- Towing & Transportation

CERTIFICATIONS



DURAHIDE™ LEATHER
TECHNOLOGY



MIDWEIGHT ❄️❄️

DURAHIDE™
LEATHER TECHNOLOGY



CONSTRUCTED WITH A HIPORA® WATERPROOF MEMBRANE.

100G PRIMALOFT® GOLD PERFORMANCE INSULATION.

TACTICAL COLDWORK™ ORIGINAL®

CWKMG-55

The ColdWork Original® is your front-line defense against the biting cold. Engineered with 60 gram 3M™ Thinsulate™ Eco Insulation, these gloves lock in warmth to keep you operational in the harshest of conditions. 360° water-resistant treatment covering the entire glove, including a SoftShell that shields your hand from wind intrusion during cold-weather operations. The glove's palm features durable synthetic leather, infused with cutting-edge touchscreen technology, ensuring you remain connected on the field.

FEATURES

- Thermoplastic Rubber (TPR) closure creates a secure fit to your wrist.
- Water-resistant SoftShell back of hand prevents the cold air from sneaking in.
- 60 gram 3M™ Thinsulate™ Eco Insulation traps warm air to help regulate your body temperature.
- Rugged Armortex® thumb saddle reinforcement.
- Touchscreen capable synthetic leather provides the perfect blend of dexterity and durability.
- Nylon carrier loops for storage.



MACHINE
WASHABLE



TOUCHSCREEN
CAPABLE

INTENDED FOR DRY, COLD APPLICATIONS

- Weapons Manipulation
- Snow Removal
- Cold Storage
- Maintenance & Repair
- Equipment Operation
- Home Improvement

CERTIFICATIONS



*RATINGS ARE TO BE CONFIRMED



MIDWEIGHT ❄️❄️

Also available as Coyote



60 GRAM 3M™ THINSULATE™ ECO INSULATION

WATER-RESISTANT SOFTSHELL BACK-OF-HAND

3M
THINSULATE™
Insulation

TACTICAL COLDWORK™ FASTFIT®

CWKTF-55

Your trusted companion in adverse conditions, the ColdWork FastFit® maintains operational effectiveness in the bitter chill. 360° water-resistant treatment enveloping the entire glove and thermal fleece insulation ensures comfort and warmth. A SoftShell back-of-hand panel repels inclement weather, blocking wind intrusion. On the palm side, we utilize battle-tested synthetic leather integrated with touchscreen technology, keeping you connected to your team and resources at all times.

FEATURES

- Stretch-elastic cuffs create a secure fit to your wrists.
- 360° water-resistant treatment covers the entire glove.
- Water-resistant SoftShell back-of-hand prevents the cold air from sneaking in.
- Comfortable fleece insulation traps warm air without hindering your dexterity.
- Rugged Armortex® thumb saddle reinforcement.
- Touchscreen capable synthetic leather provides the perfect blend of dexterity and durability.
- Nylon carrier loops for storage.



INTENDED FOR DRY, COLD APPLICATIONS

- Weapons Manipulation
- Snow Removal
- Cold Storage
- Maintenance & Repair
- Equipment Operation
- Home Improvement

CERTIFICATIONS



*RATINGS ARE TO BE CONFIRMED



LIGHTWEIGHT ❄️

Also available as Coyote



360° WATER-RESISTANT TREATMENT

WATER-RESISTANT SOFTSHELL BACK-OF-HAND

PRODUCT DETAIL OVERVIEW



	SPEEDKNIT THERMAL			COLDWORK™ FASTFIT			COLDWORK™ FASTFIT PLUS			COLDWORK™ BASE LAYER			ELEMENT			COLDWORK™ ORIGINAL			COLDWORK™ WINTER UTILITY			FIELD SERIES™ SUB40			FIELD SERIES™ SUB35			FIELD SERIES™ SUB20					
	S4DP-05			CWKFF-58			CWKFF-55			CWKBL-55 CWKBL-72			TSEL-55			CWKMG-58			CWKH15-05*			SUB40-735			SUB35-735			SUB20-735					
TYPE	Insulated Dry-Work Gloves			Insulated Dry-Work Gloves			Insulated Dry-Work Gloves			Winter Work Gloves			Insulated Tactical Gloves			Insulated Dry-Work Gloves			Water-Resistant Insulated Gloves			Insulated Waterproof Gloves			Insulated Waterproof Gloves			Insulated Waterproof Gloves					
WARMTH	❄️❄️❄️			❄️			❄️❄️❄️❄️			❄️			❄️			❄️❄️❄️			❄️❄️❄️			❄️❄️❄️			❄️❄️❄️❄️								
SIZES	S - XXL			S - XXL			S - XXL			S - XXL			S - XXL			S - XXL			S - XXL			S - XXL			S - XXL			S - XXL					
PACKAGING TYPE	HEADER CARD			HEADER CARD			HEADER CARD			HEADER CARD			HEADER CARD			HEADER CARD			HEADER CARD			HEADER CARD			HEADER CARD			HEADER CARD					
INNER PACK	10 PR			10 PR			10 PR			10 PR			10 PR			10 PR			10 PR			10 PR			10 PR			10 PR					
MASTER PACK	60 PR			60 PR			60 PR			60 PR			60 PR			60 PR			60 PR			60 PR			60 PR			60 PR					
CLOSURE	KNIT WRIST			STRETCH - ELASTIC			STRETCH - ELASTIC			ROLLOVER CUFF			TPR CLOSURE			TPR CLOSURE			STRETCH - ELASTIC			STRETCH - ELASTIC			TPR CLOSURE			TPR CLOSURE					
INSULATION	BRUSHED ACRYLIC			FLEECE			SoftShell™			Stretch SoftShell™			SoftShell™			3M Thinsulate™ C40			PRIMALOFT GOLD 40g/60g			PRIMALOFT GOLD 40g/60g			3M Thinsulate™ C40			3M Thinsulate™ C40					
WATER PERMEABILITY	✘			WATER RESISTANT			WATER RESISTANT			WATER RESISTANT			✘			WATER RESISTANT			WATER RESISTANT			WATERPROOF			WATERPROOF			WATERPROOF					
IMPACT PROTECTION	✘			✘			✘			✘			✘			✘			✘			✘			KNUCKLES			KNUCKLES			KNUCKLES		
TOUCHSCREEN CAPABLE	YES			YES			YES			YES			YES			YES			YES			YES			YES			YES					
EN 388 MECHANICAL	4242X			1121X <small>*RATINGS ARE TO BE CONFIRMED</small>			2112X			✘			2131			2121X			3222X			2132XX			2222X			3122XX					
EN 511 COLD	✘			11X <small>*RATINGS ARE TO BE CONFIRMED</small>			12X			✘			✘			22X			21X			120			120			120					
ANSI 138 IMPACT	✘			✘			✘			✘			✘			✘			✘			✘			✘			✘					
MSRP	EUR	GBP	USD	EUR	GBP	USD	EUR	GBP	USD	EUR	GBP	USD	EUR	GBP	USD	EUR	GBP	USD	EUR	GBP	USD	EUR	GBP	USD	EUR	GBP	USD	EUR	GBP	USD	EUR	GBP	USD
	6,99	6,19	6,99	21,99	19,39	21,99	37,99	32,29	37,99	22,49	19,12	22,49	32,09	28,19	32,09	25,69	22,59	25,69	24,59	21,59	24,59	28,99	25,49	28,99	33,99	29,89	33,99	35,99	31,69	35,99			

❄️ LIGHTWEIGHT (brushed fleece) ❄️❄️ MIDWEIGHT (40g - 100g) ❄️❄️❄️ HEAVYWEIGHT (100g+ Thinsulate)

* Women's sizing available

PRODUCT DETAIL OVERVIEW



	DURAHIDE™ INSULATED DRIVER			COLDWORK™ WATERPROOF LEATHER M-PACT® DRIVER F9-360			TACTICAL COLDWORK™ ORIGINAL®			TACTICAL COLDWORK™ FASTFIT®			COLDWORK™ WINDSHELL			COLDWORK™ HI-VIZ CANVAS GAUNTLET			COLDWORK™ M-PACT			COLDWORK™ CANVAS UTILITY			COLDWORK™ PEAK			COLDWORK HEATED GLOVE			COLDWORK M-PACT® HEATED GLOVE								
	CWKLD-75			LDMP-XW75			CWKMG-55 CWKMG-72			CWKTF-55 CWKTF-72			CWKWS-58			CWKGLT-91			CWKMP-58			CWKCU-05			CWKPK-58			CWKHT-05			CWKMP8-75								
TYPE	Water-Resistant Leather Gloves			Winter Work Gloves			Insulated Tactical Gloves			Winter Tactical Gloves			Insulated Wind Resistant Gloves			High-Visibility Insulated Gloves			Insulated Dry-Work Impact Gloves			Insulated Water Resistant Gloves			Insulated Waterproof Gloves			Water-Resistant Leather Gloves			Insulated Dry-Work Gloves								
WARMTH	❄️❄️			❄️❄️			❄️❄️			❄️			❄️❄️			❄️❄️❄️			❄️❄️			❄️❄️❄️			❄️❄️❄️			❄️❄️❄️			❄️❄️❄️								
SIZES	S - XXL			S - XXL			S - XXL			S - XXL			S - XXL			S - XXL			S - XXL			S - XXL			S - XXL			S - XXL			S - XXL								
PACKAGING TYPE	HEADER CARD			HEADER CARD			HEADER CARD			HEADER CARD			HEADER CARD			HEADER CARD			HEADER CARD			HEADER CARD			HEADER CARD			HEADER CARD			HEADER CARD								
INNER PACK	10 PR			10 PR			10 PR			10 PR			10 PR			10 PR			10 PR			10 PR			10 PR			10 PR			1 UNIT			1 UNIT					
MASTER PACK	60 PR			60 PR			60 PR			60 PR			60 PR			60 PR			60 PR			60 PR			60 PR			60 PR			60 PR			12 PR			12 PR		
CLOSURE	STRETCH - ELASTIC			STRETCH - ELASTIC			TPR CLOSURE			STRETCH - ELASTIC			TPR CLOSURE			STRETCH - ELASTIC			TPR CLOSURE			STRETCH - ELASTIC			LADDER LOCK			CINCH CORD			TPR CLOSURE								
INSULATION	3M Thinsulate™C40			PRIMALOFT GOLD 100g			60 gram 3M™ Thinsulate™ Eco Insulation			SoftShell™			PRIMALOFT GOLD 40g/60g			100g 3M™ Thinsulate™ Insulation			3M Thinsulate™C40			100g 3M™ Thinsulate™ Insulation			PRIMALOFT GOLD 100g			PRIMALOFT GOLD 133g			PRIMALOFT GOLD 133g								
WATER PERMEABILITY	WATER RESISTANT			WATERPROOF			WATER RESISTANT			WATER RESISTANT			WATER RESISTANT			WATER RESISTANT			✘			WATER RESISTANT			WATERPROOF			WATERPROOF			WATERPROOF								
IMPACT PROTECTION	✘			FINGERS + KNUCKLES			✘			✘			✘			KNUCKLES			FINGERS + KNUCKLES			KNUCKLES			KNUCKLES METACARPALS			✘			KNUCKLES								
TOUCHSCREEN CAPABLE	✘			✘			YES			YES			YES			✘			YES			✘			YES			YES			YES								
EN 388 MECHANICAL	1122X			4X43FP			2121X <small>*RATINGS ARE TO BE CONFIRMED</small>			1121X <small>*RATINGS ARE TO BE CONFIRMED</small>			2122X			3113X			2121XP			2223X			2232XP			✘			✘								
EN 511 COLD	33X			221			22X <small>*RATINGS ARE TO BE CONFIRMED</small>			11X <small>*RATINGS ARE TO BE CONFIRMED</small>			32X			23X			11X			23X			221			✘			231								
ANSI 138 IMPACT	✘			LEVEL 2			✘			✘			✘			✘			LEVEL 2			LEVEL 4			✘			✘			✘								
MSRP	EUR	GBP	USD	EUR	GBP	USD	EUR	GBP	USD	EUR	GBP	USD	EUR	GBP	USD	EUR	GBP	USD	EUR	GBP	USD	EUR	GBP	USD	EUR	GBP	USD	EUR	GBP	USD	EUR	GBP	USD	EUR	GBP	USD			
	25,99	22,89	25,99	66,29	58,29	66,29	25,69	22,59	25,69	21,99	19,39	21,99	32,09	28,19	32,09	32,09	28,19	32,09	38,49	33,89	38,49	42,79	37,69	42,79	45,99	40,49	45,99	224,99	197,99	224,99	269,99	237,59	269,99						

❄️ LIGHTWEIGHT (brushed fleece) ❄️❄️ MIDWEIGHT (40g - 100g) ❄️❄️❄️ HEAVYWEIGHT (100g+ Thinsulate)



LEARN

EN511:2006



11X

11X

CONVECTIVE COLD PERFORMANCE

11X

CONTACT COLD PERFORMANCE

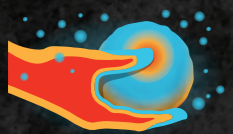
11X

WATER PENETRATION PERFORMANCE



CONVECTION

The process of losing heat through the movement of air or water on the skin.



CONDUCTION

The process of losing heat through physical contact with another object, such as frozen ball of ice.



HEAT RETENTION

Refers to the amount of heat an object or material can store over a period of time.

CONVECTIVE COLD TEST

11X

PERFORMANCE LEVELS 0-4

The glove sample is placed on an electrically heated mannequin hand (Fig. A) that measures the amount of power required to maintain 30°C and 35°C in a controlled environmental chamber.



FIG. A

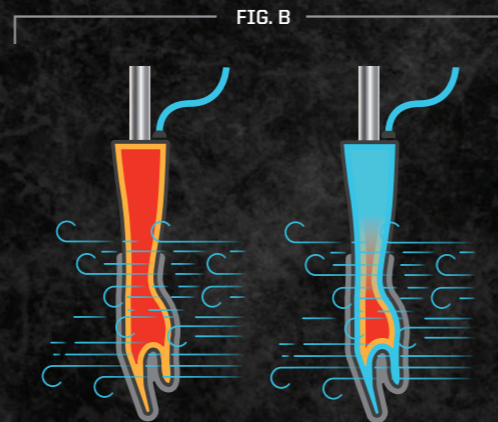


FIG. B

The chamber is cooled down to 20°C below that of the heated hand, and constant air flow is applied (Fig. B). The more electrical power required, the lower the thermal insulation rating of the glove (Fig. C).

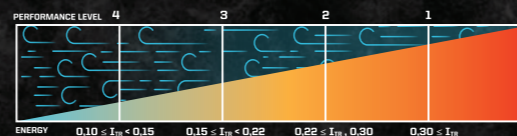


FIG. C

EN 511: 2006 - COLD ENVIRONMENTS

Air temperature, wind speed, and moisture present major challenges for working hands in cold environments. EN 511: 2006 specifies the requirements and test methods for winter gloves designed to protect against convective and conductive cold down to -50 °C.

CONTACT COLD TEST

11X

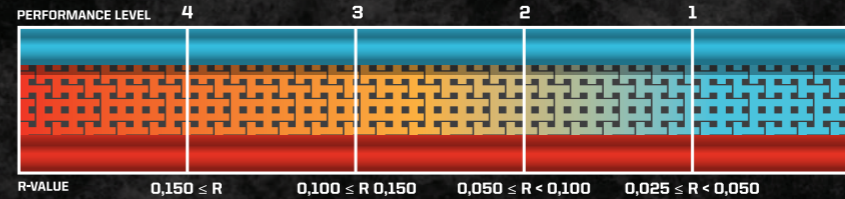
PERFORMANCE LEVELS 0-4

The glove sample is placed between metal plates which are at different temperatures (Fig. A) in order to measure the temperature drop (Fig. B), also known as thermal resistance.



FIG. A

FIG. B



*R-value depends on material resistance to heat conduction, as well as the thickness of the material normalized to the thermal conductivity.

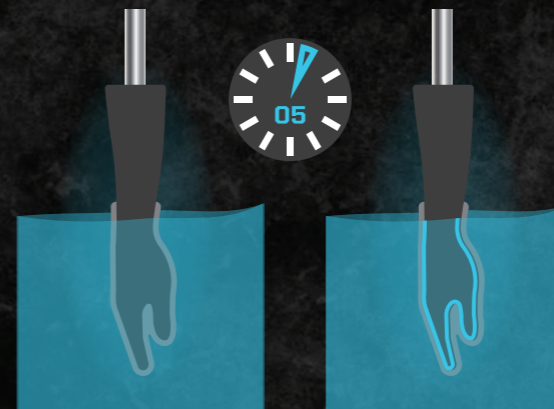


FIG. A

FIG. B

WATER PENETRATION TEST

11X

PERFORMANCE LEVELS 0-1

The glove sample is fully submerged in water for 5 minutes to measure its permeability (Fig. A). If the glove maintains impermeability for the 5 minute duration, it will receive a Level 1 "Pass Rating". If the glove takes on water during the 5 minute duration, it will receive a Level 0 "Fail" rating (Fig. B).



MECHANIX WEAR LLC
27335 TOURNEY ROAD
VALENCIA, CA USA 91355
USA

MECHANIX WEAR CANADA
3800A LAIRD ROAD, UNITS 2 & 3
MISSISSAUGA, ON L5L 0B2
CANADA

WWW.MECHANIX.COM

MECHANIX WEAR EMEA, S.L.U.
CARRER DIPUTACIÓ 256, 2N 2A
08007, BARCELONA, SPAIN
SPAIN

MECHANIX WEAR ASIA PACIFIC
12 BRENNAN WAY, BELMONT
WESTERN AUSTRALIA, 6104
AUSTRALIA

Contact your Mechanix Wear Sales representative for more information.

