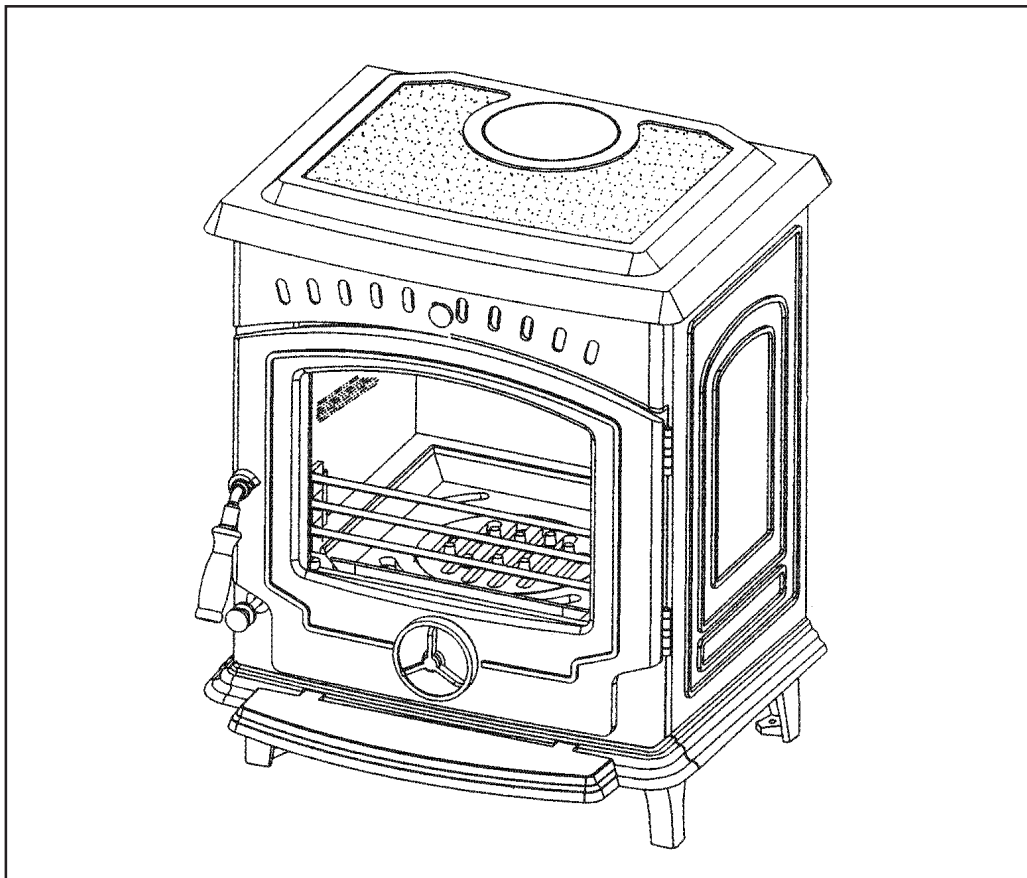

PLEASE RETAIN



Tara Boiler / Non Boiler & DHW Solid Fuel Stove

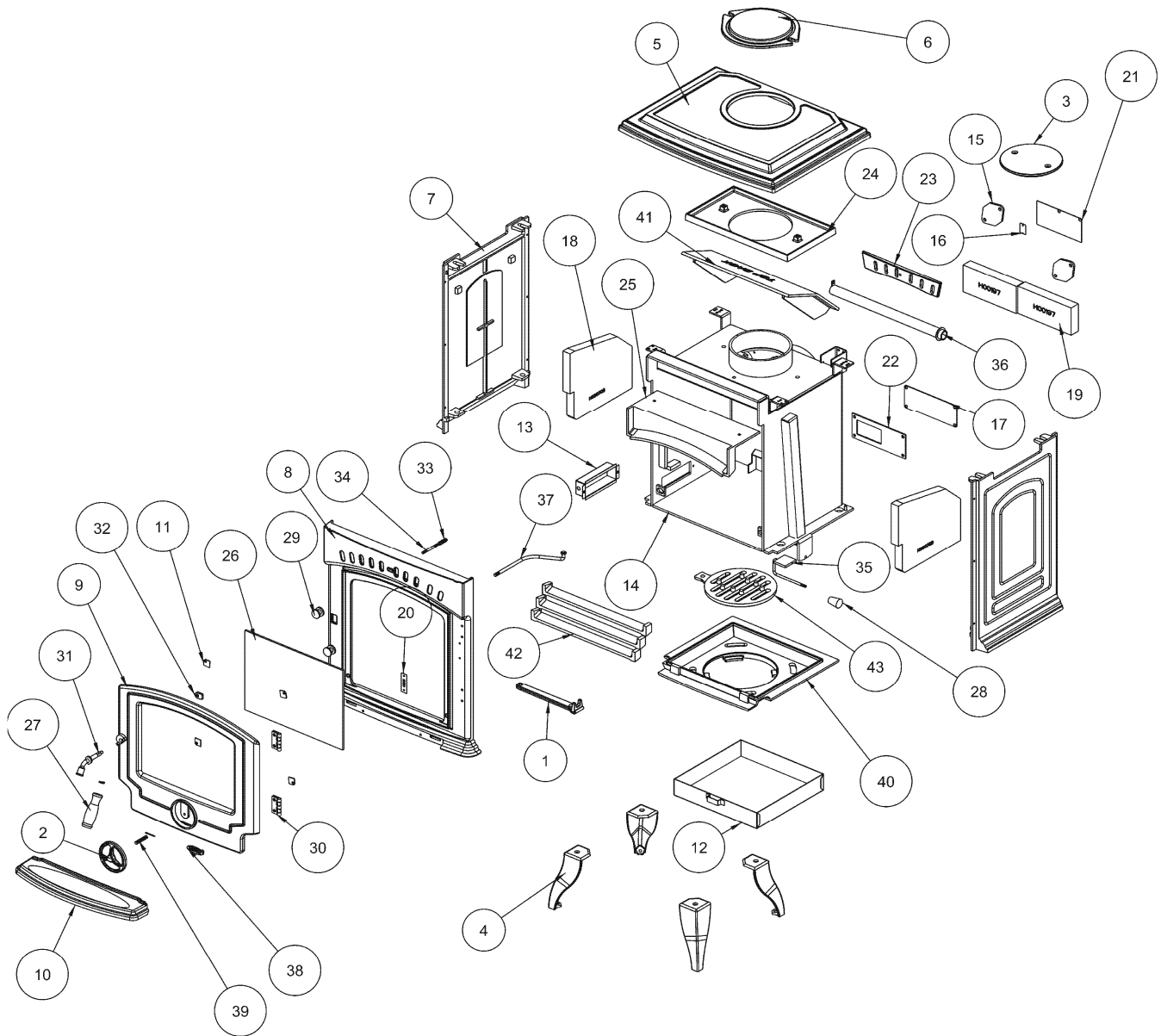


WARNING: This appliance is hot while in operation and retains its heat for a long period of time after use. children, aged or infirm persons should be supervised at all times and should not be allowed to touch the hot working surfaces while in use or until the appliance has thoroughly cooled.

When using the boiler stove in situations where children, aged and/or infirm persons are present a fire-guard must be used to prevent accidental contact with the stove. The fireguard should be manufactured in accordance with BS 8423:2010.

INSTALLATION AND OPERATING INSTRUCTIONS

TARA NB EXPLODED VIEW



- | | |
|---|---|
| 1. OPERATING TOOL - B0009BZZ | 23. SECONDARY AIR WASH SHUTTER - Q00247AXX |
| 2. SPIN VALVE - B00012AZZ | 24. DRY SHELL PROTECTION PLATE - Q00250AXX |
| 3. FLUE BLANKING PLATE - B00064AZZ | 25. AIR WASH PLATE - Q00564AXX |
| 4. LEG (LONG) - B00077BZZ | 26. GLASS WINDOW - T00009AXX |
| 5. HOB - B00209AZZ | 27. DOOR HANDLE LONG - U00009AXX |
| 6. HOB BLANKING PLATE - B00210AZZ | 28. SECONDARY AIR CONTROL - U00018AXX |
| 7. SIDE PANEL - B00211BZZ | 29. AIR WASH KNOB - U00077AXX |
| 8. FRONT PANEL - B00257JZZ | 30. HINGE - U00153AXX |
| 9. FRONT DOOR - B00258CZZ | 31. DOOR HANDLE AXLE - V00022BXX |
| 10. ASHTRAY FRONT - B00259AZZ | 32. DOOR LATCH - V00023AXX |
| 11. DOOR GLASS CLIP - F00003AXX | 33. SPRING (RS 751-584) - V00151AXX |
| 12. ASHPAN - F00221AXX | 34. AIR WASH SHUTTER - V00158AXX |
| 13. PULL ROD BOX - F00223BXX | 35. SECONDARY AIR DAMPER - V00161AXX |
| 14. DRY SHELL - F00238DXX | 36. SECONDARY AIR TUBE - V00162AXX |
| 15. WS PLUG - F00506AXX | 37. PULL ROD - V00393AXX |
| 16. RATING PLATE HOOK - V01072AXX | 38. BADGE - V00730BXX |
| 17. BLANKING PLATE - F01029AXX | 39. M8X44 SPINDLE - V00763AXX |
| 18. SIDE BRICK - H00070BXX | 40. FIRE BOX INSERT - Z00016BXX |
| 19. TARA BRICK FOR DRY SHELL - H00197AXX | 41. FLUE CLEANING PLATE - Z00019BXX |
| 20. SERIAL NUMBER PLATE - N00234BXX | 42. FIRE FENCE - Z00020AXX |
| 21. DATA PLAQUE - N00442AXX | 43. GRATE - Z00025BXX |
| 22. OSA DAMPER GASKET - P00101AXX | |