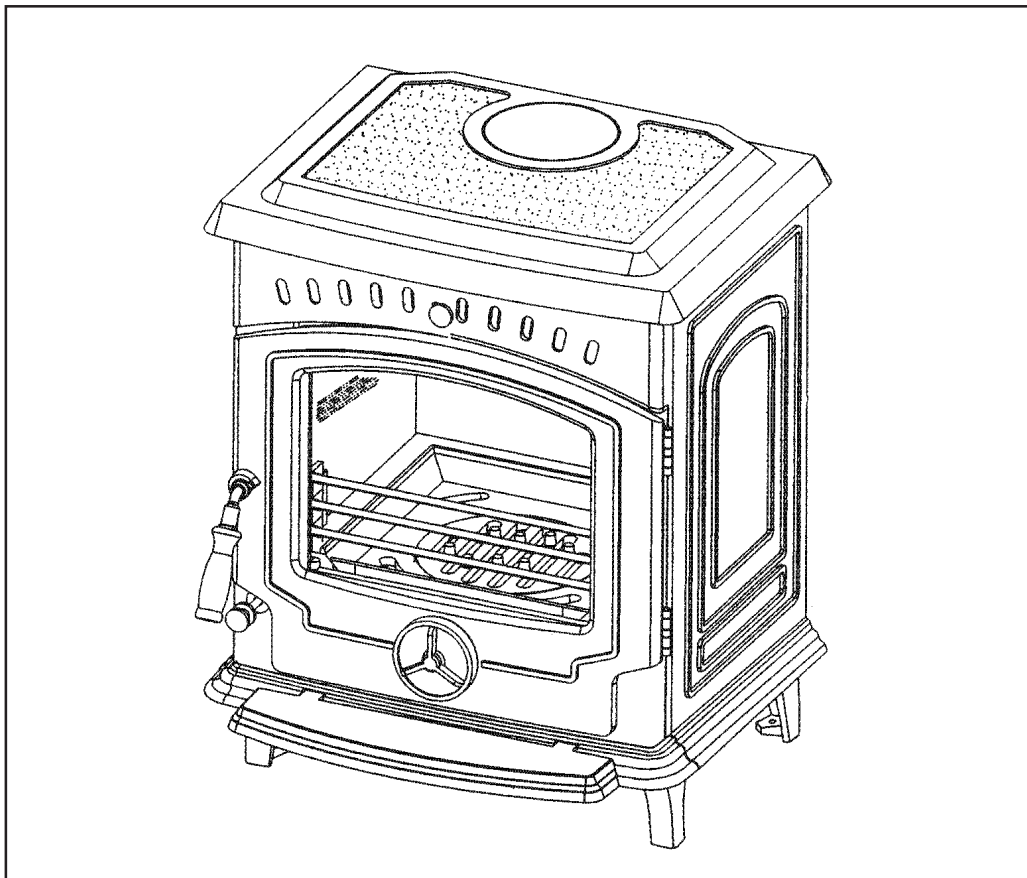

PLEASE RETAIN



Tara Boiler / Non Boiler & DHW Solid Fuel Stove

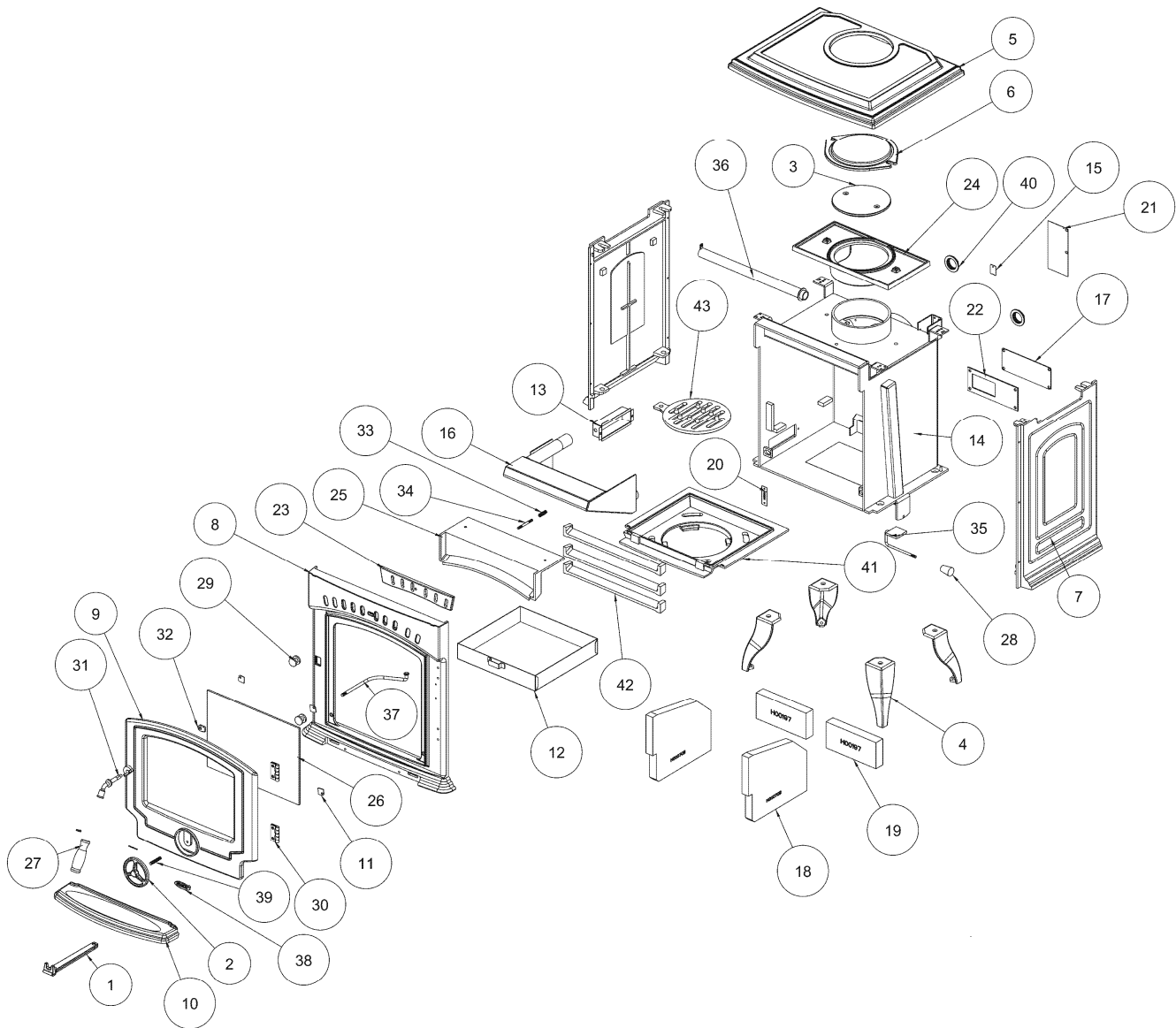


WARNING: This appliance is hot while in operation and retains its heat for a long period of time after use. children, aged or infirm persons should be supervised at all times and should not be allowed to touch the hot working surfaces while in use or until the appliance has thoroughly cooled.

When using the boiler stove in situations where children, aged and/or infirm persons are present a fire-guard must be used to prevent accidental contact with the stove. The fireguard should be manufactured in accordance with BS 8423:2010.

INSTALLATION AND OPERATING INSTRUCTIONS

TARA DHW EXPLODED VIEW



- | | |
|---|---|
| 1. OPERATING TOOL - B00009BZZ | 22. OSA DAMPER GASKET - P00101AXX |
| 2. SPIN VALVE - B00012AZZ | 23. SECONDARY AIR WASH SHUTTER - Q00247AXX |
| 3. FLUE BLANKING PLATE - B00064AZZ | 24. DRY SHELL PROT. PLATE - Q00250AXX |
| 4. LEG (LONG) - B00077BZZ | 25. AIR WASH PLATE - Q00564AXX |
| 5. HOB - B00209AZZ | 26. GLASS WINDOW - T00009AXX |
| 6. HOB BLANKING PLATE - B00210AZZ | 27. DOOR HANDLE (Long) - U00009AXX |
| 7. SIDE PANEL - B00211BZZ | 28. SECONDARY AIR CONTROL - U00018AXX |
| 8. FRONT PANEL - B00257JZZ | 29. AIR WASH KNOB - U00077AXX |
| 9. FRONT DOOR - B00258CZZ | 30. HINGE - U00153AXX |
| 10. ASHTRAY FRONT - B00259AZZ | 31. DOOR HANDLE AXLE - V00022BXX |
| 11. DOOR GLASS CLIP - F00003AXX | 32. DOOR LATCH - V00023AXX |
| 12. ASHPAN - F00221AXX | 33. SPRING (RS - 751 - 584) - V00151AXX |
| 13. PULL ROD BOX - F00223BXX | 34. AIR WASH SHUTTER SHAFT - V00158AXX |
| 14. DRY SHELL - F00238DXX | 35. SECONDARY AIR DAMPER - V00161AXX |
| 15. RATING PLATE HOOK - V01072AXX | 36. SECONDARY AIR TUBE - V00162AXX |
| 16. TARA DHW BOILER - F00948AXX | 37. PULL ROD - V00393AXX |
| 17. BLANKING PLATE - F01029AXX | 38. BADGE - V00730BXX |
| 18. SIDE BRICK - H00070BXX | 39. M8 X 44 SPINDLE - V00763AXX |
| 19. TARA BRICK FOR DRY SHELL - H00197AXX | 40. BRASS NUT FLANGED - W00910AXX |
| 20. SERIAL NUMBER PLATE - N00234BXX | 41. FIRE BOX INSERT - Z00016BXX |
| 21. DATA PLAQUE - N00566AXX | 42. FIRE FENCE - Z00020AXX |
| | 43. GRATE - Z00025BXX |