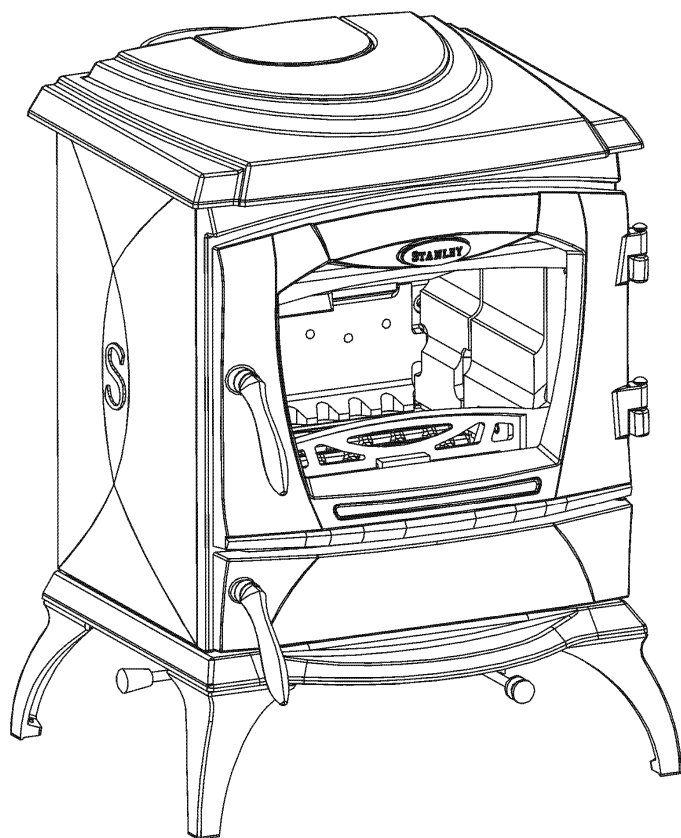

PLEASE RETAIN



Lismore Non Boiler Solid Fuel Stove

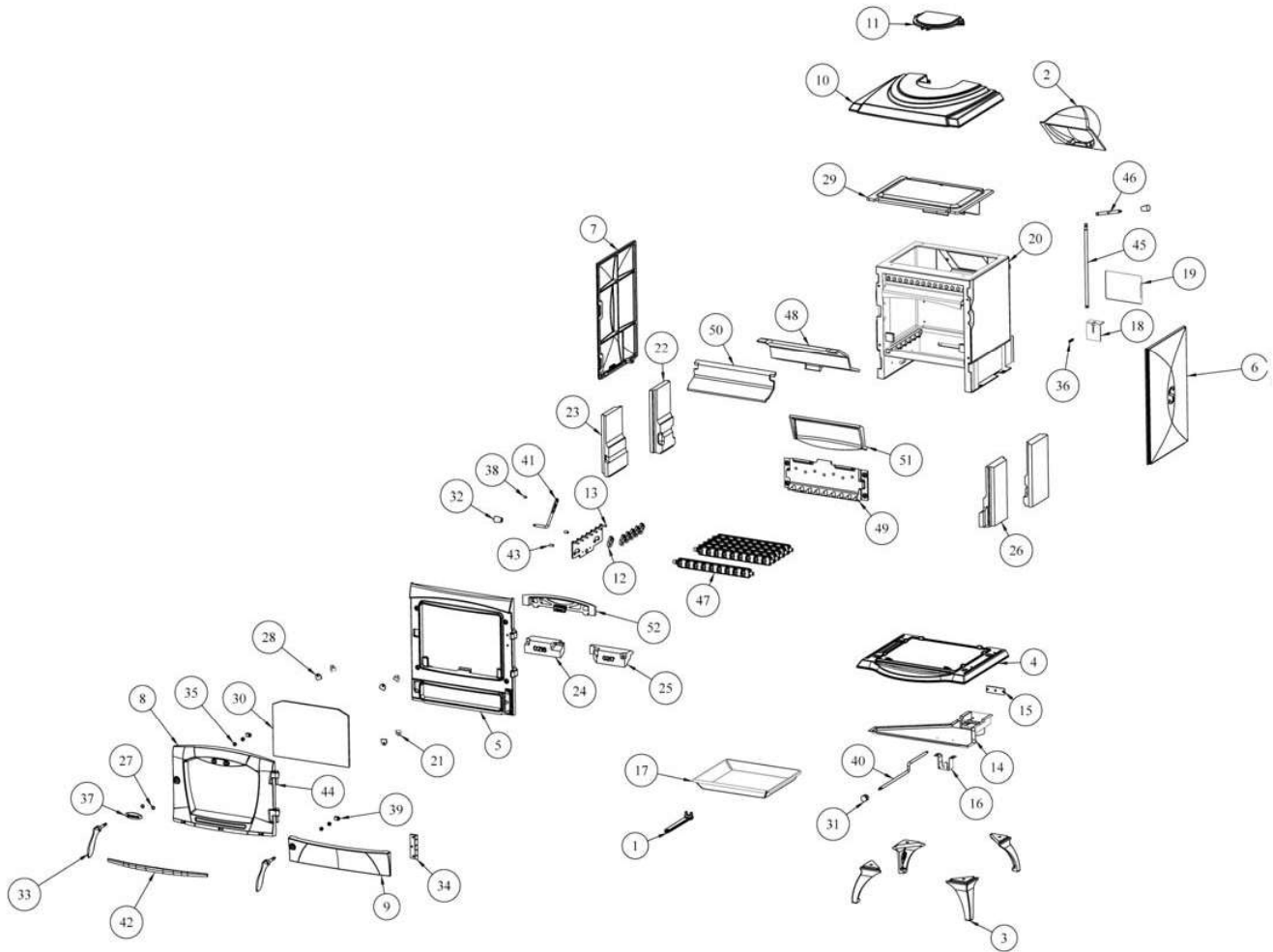


INSTALLATION AND OPERATING INSTRUCTIONS

This appliance is hot while in operation and retains its heat for a long period of time after use. Children, aged or infirm persons should be supervised at all times and should not be allowed to touch the hot working surfaces while in use or until the appliance has thoroughly cooled.

When using the stove in situations where children, aged and/or infirm persons are present a fireguard must be used to prevent accidental contact with the stove. The fireguard should be manufactured in accordance with BS 8423:2010.

LISMORE SF NB EXPLODED VIEW



- | | |
|--|---|
| 1. OPERATING TOOL - B00009DXX | 27. BADGE GASKET - P00107AXX |
| 2. FLUE SPIGOT - B00116AXX | 28. GLASS CLIP GASKET - P00117AXX |
| 3. STOVE LEG - B00595AXX | 29. HEAT EXCHANGER - Q00765AXX |
| 4. BASE - B00610AXX | 30. GLASS - T00101AXX |
| 5. FRONT - B00611AXX | 31. PULL ROD KNOB - U00001AXX |
| 6. RIGHT HAND SIDE - B00612AXX | 32. SECONDARY AIR CONTROL - U00018AXX |
| 7. LEFT HAND SIDE - B00613AXX | 33. DOOR HANDLE - U00191AXX |
| 8. FIRE DOOR - B00615AXX | 34. HINGE - U00193AXX |
| 9. ASH DOOR - B00616AXX | 35. SPACER TO DOOR HANDLE - V00035AXX |
| 10. HOB - B00630AXX | 36. COMPRESSION SPRING - V00564AXX |
| 11. HOB BLANKING PLATE - B00631AXX | 37. BADGE - V00912AXX |
| 12. RIDDLING LINK - F01068AXX | 38. SPACER - V00956AXX |
| 13. LINK BRACE - F01069AXX | 39. DOOR CATCH - V00985AXX |
| 14. AIR CHANNEL COVER - F01071AXX | 40. DAMPER ROD - V00988AXX |
| 15. DAMPER - F01073AXX | 41. RIDDLING ROD - V00989AXX |
| 16. BRACKET - F01074AXX | 42. FRONT STRIP - V00990AXX |
| 17. ASHPAN BODY - F01075AXX | 43. SPACER - V00991AXX |
| 18. PRIMARY AIR CONTROL SHUTTER - F01098AXX | 44. HINGE PIN (CAM ACTION) - V01071AXX |
| 19. OSA BOX COVER - F01101AXX | 45. DAMPER CONTROL ROD - V01005AXX |
| 20. LISMORE NB SHELL - F01102AXX | 46. DAMPER LEVER - V01006AXX |
| 21. DOOR GLASS CLIP - F01203AXX | 47. RIDDLING BAR - Z00047AXX |
| 22. BACK BRICK - H00214AXX | 48. FLUE CLEANING DOOR - Z00048AXX |
| 23. SIDE BRICK LH FRONT - H00215AXX | 49. BACK CASTING - Z00055AXX |
| 24. LH FRONT BRICK - H00216AXX | 50. ROOF PROTECTION PLATE - Z00056AXX |
| 25. RH FRONT BRICK - H00217AXX | 51. ROOF PROTECTION PLATE REAR - Z00057AXX |
| 26. SIDE BRICK RH FRONT - H00218AXX | 52. FIRE FENCE - Z00059AXX |