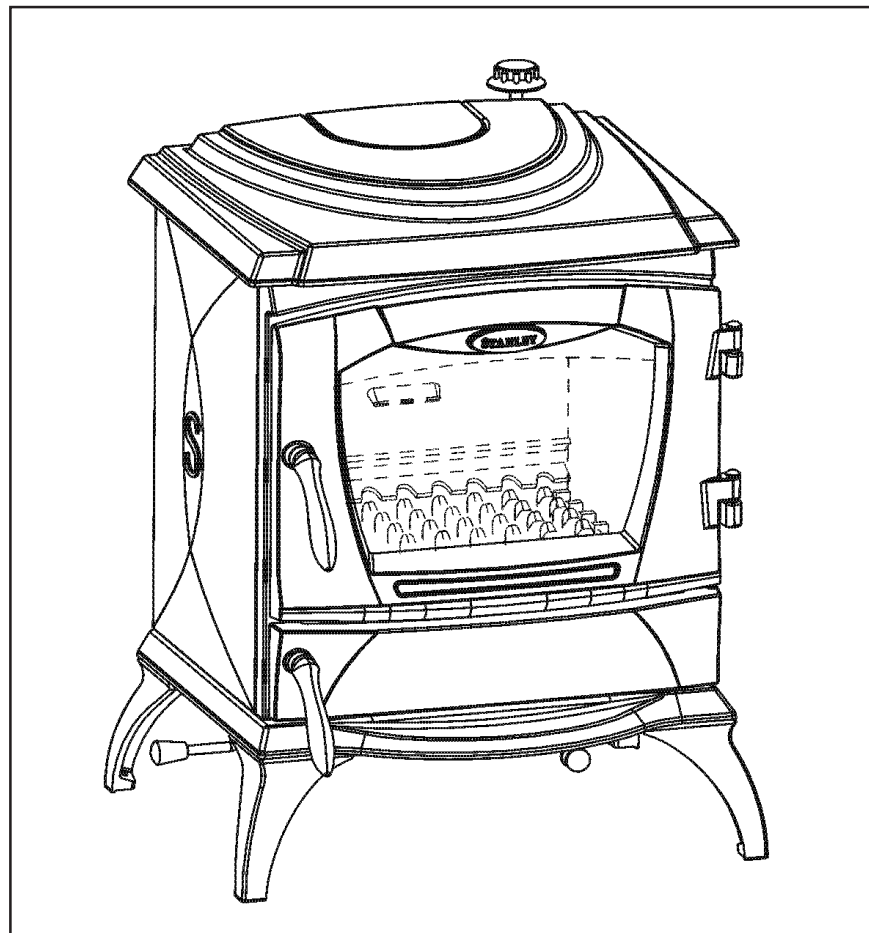

PLEASE RETAIN



Lismore Boiler Solid Fuel Stove

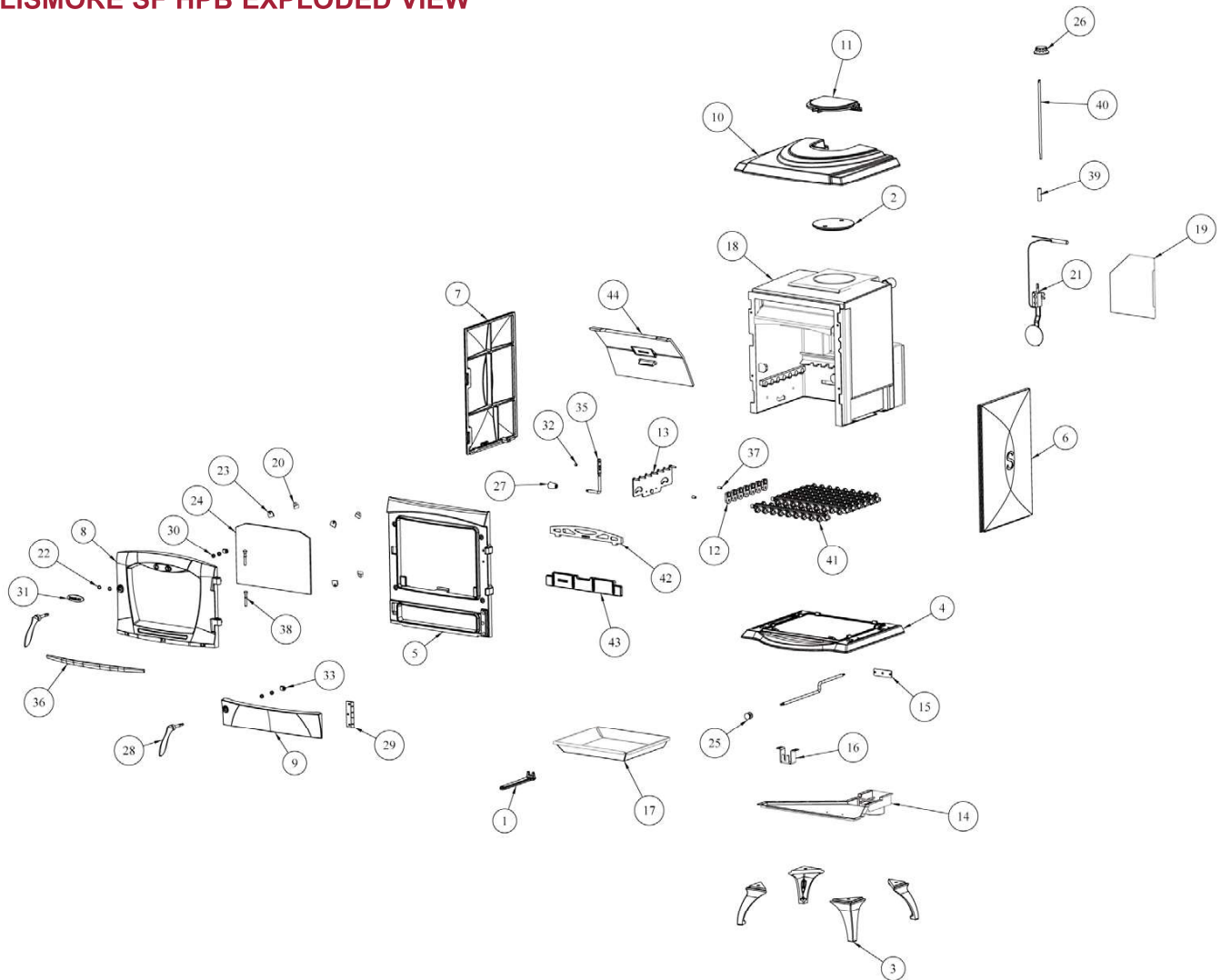


INSTALLATION AND OPERATING INSTRUCTIONS

This appliance is hot while in operation and retains its heat for a long period of time after use. Children, aged or infirm persons should be supervised at all times and should not be allowed to touch the hot working surfaces while in use or until the appliance has thoroughly cooled.

When using the boiler stove in situations where children, aged and/or infirm persons are present a fire-guard must be used to prevent accidental contact with the stove. The fireguard should be manufactured in accordance with BS 8423:2010.

LISMORE SF HPB EXPLODED VIEW



- | | |
|---|---|
| 1. OPERATING TOOL - B00009DXX | 24. GLASS - T00101AXX |
| 2. FLUE BLANKING PLATE - B00064AXX | 25. PULL ROD KNOB - U00001AXX |
| 3. STOVE LEG - B00595AXX | 26. AIR CONTROL KNOB - U00006AXX |
| 4. BASE - B00610AXX | 27. SECONDARY AIR CONTROL - U00018AXX |
| 5. FRONT - B00611AXX | 28. DOOR HANDLE - U00191AXX |
| 6. RH SIDE - B00612AXX | 29. HINGE - U00193AXX |
| 7. LH SIDE - B00613AXX | 30. SPACER TO DOOR HANDLE - V00035AXX |
| 8. FIRE DOOR - B00615AXX | 31. BADGE - V00912AXX |
| 9. ASH DOOR - B00616AXX | 32. SPACER - V00956AXX |
| 10. HOB - B00630AXX | 33. DOOR CATCH - V00985AXX |
| 11. HOB BLANKING PLATE - B00631AXX | 34. DAMPER ROD - V00988AXX |
| 12. RIDDLING LINK - F01068AXX | 35. RIDDLING ROD - V00989AXX |
| 13. LINK BRACE - F01069AXX | 36. FRONT STRIP - V00990AXX |
| 14. AIR CHANNEL COVER - F01071AXX | 37. SPACER - V00991AXX |
| 15. DAMPER - F01073AXX | 38. HINGE PIN (CAM ACTION) - V01071AXX |
| 16. BRACKET - F01074AXX | 39. RUBBER EXTENSION - V01026AXX |
| 17. ASHPAN - F01075AXX | 40. THERMOSTAT CONTROL ROD - V01028AXX |
| 18. LISMORE BOILER - F01131AXX | 41. RIDDLING BAR - Z00047AXX |
| 19. OSA COVER PLATE - F01154AXX | 42. FIRE FENCE - Z00049AXX |
| 20. GLASS CLIP- F01203AXX | 43. FRONT PROTECTION PLATE - Z00052AXX |
| 21. THERMOSTAT - G00479AXX | 44. FLUE CLEANING DOOR - Z00065AXX |
| 22. BADGE GASKET - P00107AXX | |
| 23. GLASS CLIP GASKET - P00117AXX | |