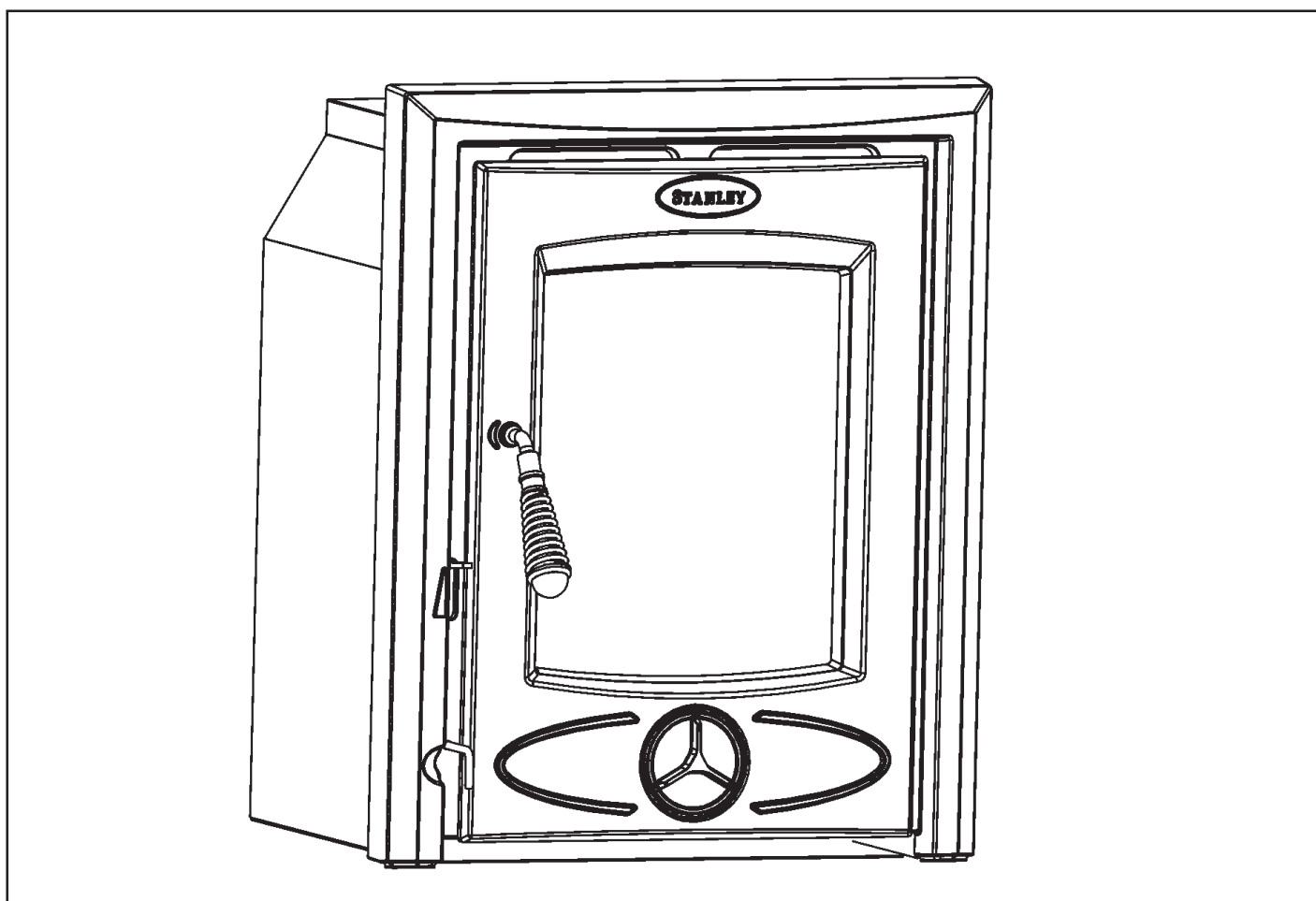




# Cara Non Boiler Insert Stove

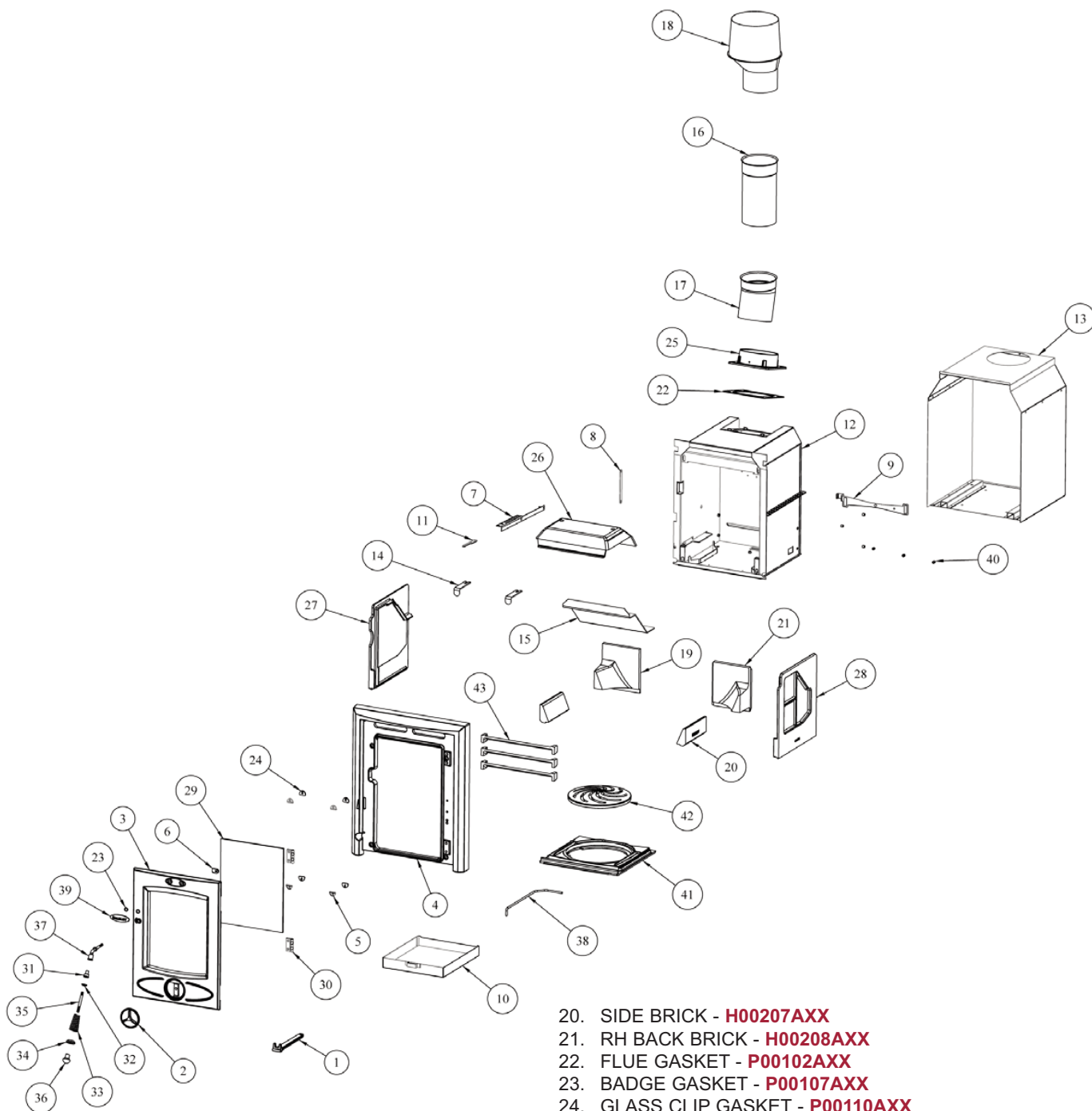


**This appliance is hot while in operation and retains its heat for a long period of time after use. Children, aged or infirm persons should be supervised at all times and should not be allowed to touch the hot working surfaces while in use or until the appliance has thoroughly cooled.**

***When using the stove in situations where children, aged and/or infirm persons are present a fireguard must be used to prevent accidental contact with the stove. The fireguard should be manufactured in accordance with BOX 8423:2002.***

**INSTALLATION AND OPERATING INSTRUCTIONS**

## CARA INSERT STOVE EXPLODED VIEW



1. OPERATING TOOL - **B00009DZZ**
2. SPIN VALVE - **B00032AZZ**
3. FIRE DOOR - **B00587AZZ**
4. FRONT - **B00588AZZ**
5. WINDOW CLIP - **CA1101**
6. DOOR CATCH - **F00928AXX**
7. SECONDARY AIR OP LEVER - **F00993AXX**
8. SECONDARY AIR CONNECTOR BAR - **F00994AXX**
9. SECONDARY AIR PLATE - **F00995AXX**
10. ASHPAN - **F00997AXX**
11. LEVER - **F01007AXX**
12. COMBUSTION CHAMBER - **F01078AXX**
13. CONVECTION CHAMBER - **F01079AXX**
14. BAFFLE SUPPORT - **F01084AXX**
15. BAFFLE - **F01198AXX**
16. 5" X 250MM STRAIGHT PIPE - **F01199AXX**
17. 5" 15 DEGREE BEND - **F01200AXX**
18. 5" TO 8" OFFSET CLAY ADAPTOR - **F01201AXX**
19. LH BACK BRICK - **H00203AXX**

20. SIDE BRICK - **H00207AXX**
21. RH BACK BRICK - **H00208AXX**
22. FLUE GASKET - **P00102AXX**
23. BADGE GASKET - **P00107AXX**
24. GLASS CLIP GASKET - **P00110AXX**
25. 5" FLUE - **Q00752AXX**
26. TOP BAFFLE - **Q00761AXX**
27. LH SIDE PLATE - **Q00790AXX**
28. RH SIDE PLATE - **Q00791AXX**
29. 16" DOOR GLASS - **T00098AXX**
30. HINGE - **U00153AXX**
31. SPIGOT TO DOOR HANDLE - **V0021AXX**
32. BLACK NYLON CAP WASHER - **V00669AXX**
33. BLACK COIL SPRING HANDLE - **V00806AXX**
34. BLACK DIAO INCREASING COLLAR - **V00807AXX**
35. BLACK M8 X 80 SPINDLE - **V00808AXX**
36. BLACK HANDLE END CAP - **V00850AXX**
37. DOOR AXLE - **V00857AXX**
38. PULL ROD - **V00911AXX**
39. BADGE - **V00912AXX**
40. SPACER - **V00956AXX**
41. GRATE SUPPORT - **Z00035AXX**
42. GRATE - **Z00036AXX**
43. FIRE FENCE - **Z00037AXX**