
PLEASE RETAIN



Ardmore

Non Boiler Solid Fuel Stove

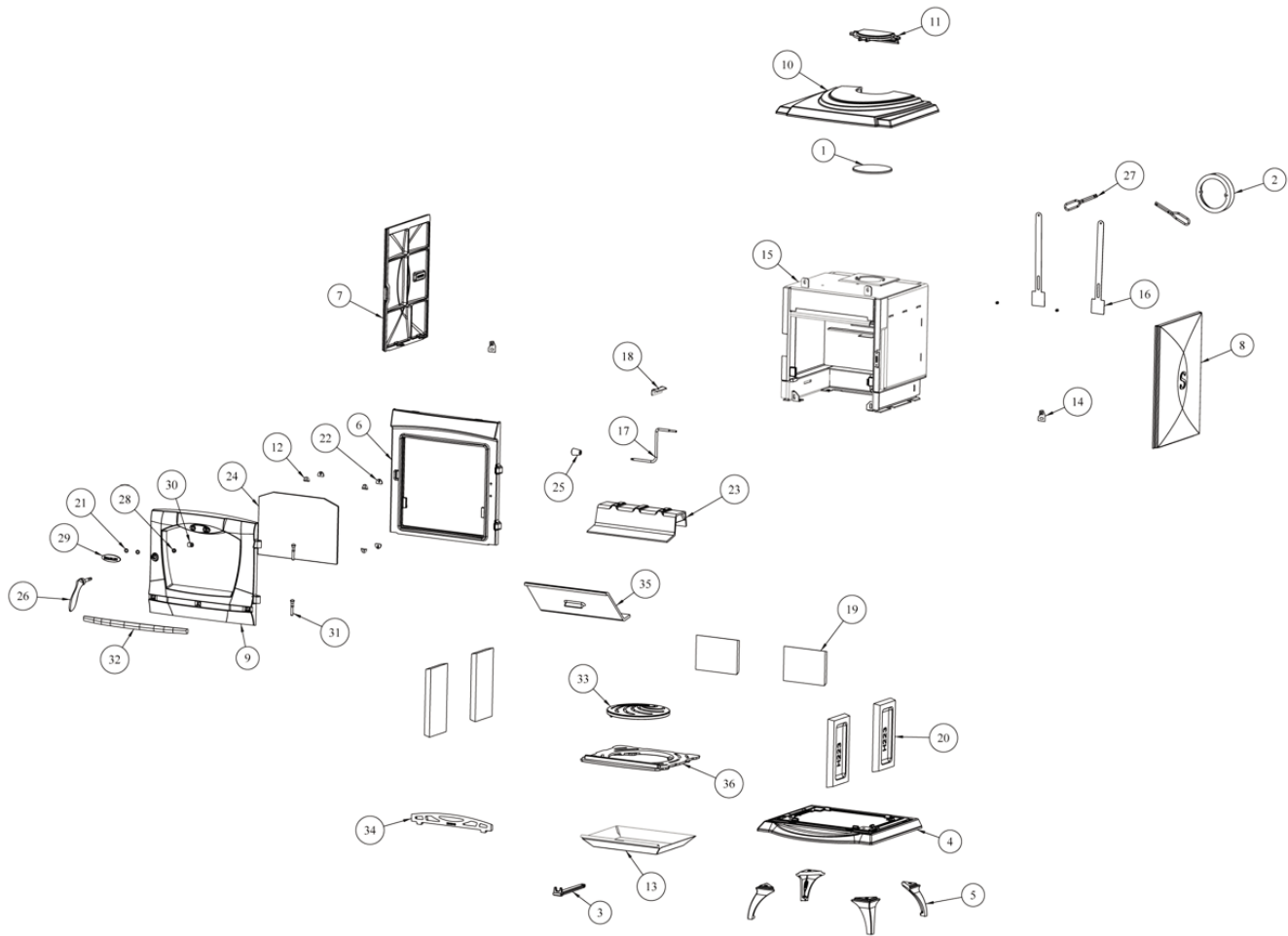


INSTALLATION AND OPERATING INSTRUCTIONS

This appliance is hot while in operation and retains its heat for a long period of time after use. Children, aged or infirm persons should be supervised at all times and should not be allowed to touch the hot working surfaces while in use or until the appliance has thoroughly cooled.

When using the boiler stove in situations where children, aged and/or infirm persons are present a fire-guard must be used to prevent accidental contact with the stove. The fireguard should be manufactured in accordance with BS 8423:2010.

EXPLODED VIEW



- | | |
|--|---|
| 1. HOB BLANKING PLATE - B00006AZZ | 21. BADGE GASKET - P00107AXX |
| 2. FLUE SPIGOT - B00007BZZ | 22. GLASS CLIP GASKET - P00110AXX |
| 3. OPERATING TOOL - B00009DXX | 23. ROOF BAFFLE - Q00789AXX |
| 4. BASE - B00620AZZ | 24. GLASS - T00102AXX |
| 5. STOVE LEG - B00621AZZ | 25. SECONDARY AIR CONTROL - U00018AXX |
| 6. FRONT - B00622AZZ | 26. DOOR HANDLE - U00191AXX |
| 7. LEFT HAND SIDE - B00623AZZ | 27. OPERATING HANDLE - U00195XX |
| 8. RIGHT HAND SIDE - B00624AZZ | 28. SPACER TO DOOR HANDLE - V00035AXX |
| 9. FIRE DOOR - B00625AZZ | 29. BADGE - V00912AXX |
| 10. HOB - B00626AZZ | 30. DOOR CATCH - V00985AXX |
| 11. HOB FILLER PIECE - B00629AZZ | 31. HINGE PIN (CAM ACTION) - V01071AXX |
| 12. DOOR GLASS CLIP - CA1101 | 32. FRONT STRIP - V01008AXX |
| 13. ASHPAN - F01130AXX | 33. GRATE - Z00036AXX |
| 14. SIDE PANEL BKT RH - F01179AXX | 34. FIRE FENCE - Z00049AXX |
| 15. SHELL - F01262AXX | 35. CLEANING DOOR - Z00060AXX |
| 16. AIR CONTROL SHUTTER - F01263AXX | 36. GRATE SUPPORT PLATE - Z00061AXX |
| 17. RIDDLING FORK - F01320AXX | |
| 18. STOP BRACKET - F01321AXX | |
| 19. BACK BRICK - H00222AXX | |
| 20. SIDE BRICK - H00223AXX | |