

GdUfY'DUfh; i jXY



# Ardmore

## Boiler Solid Fuel Stove

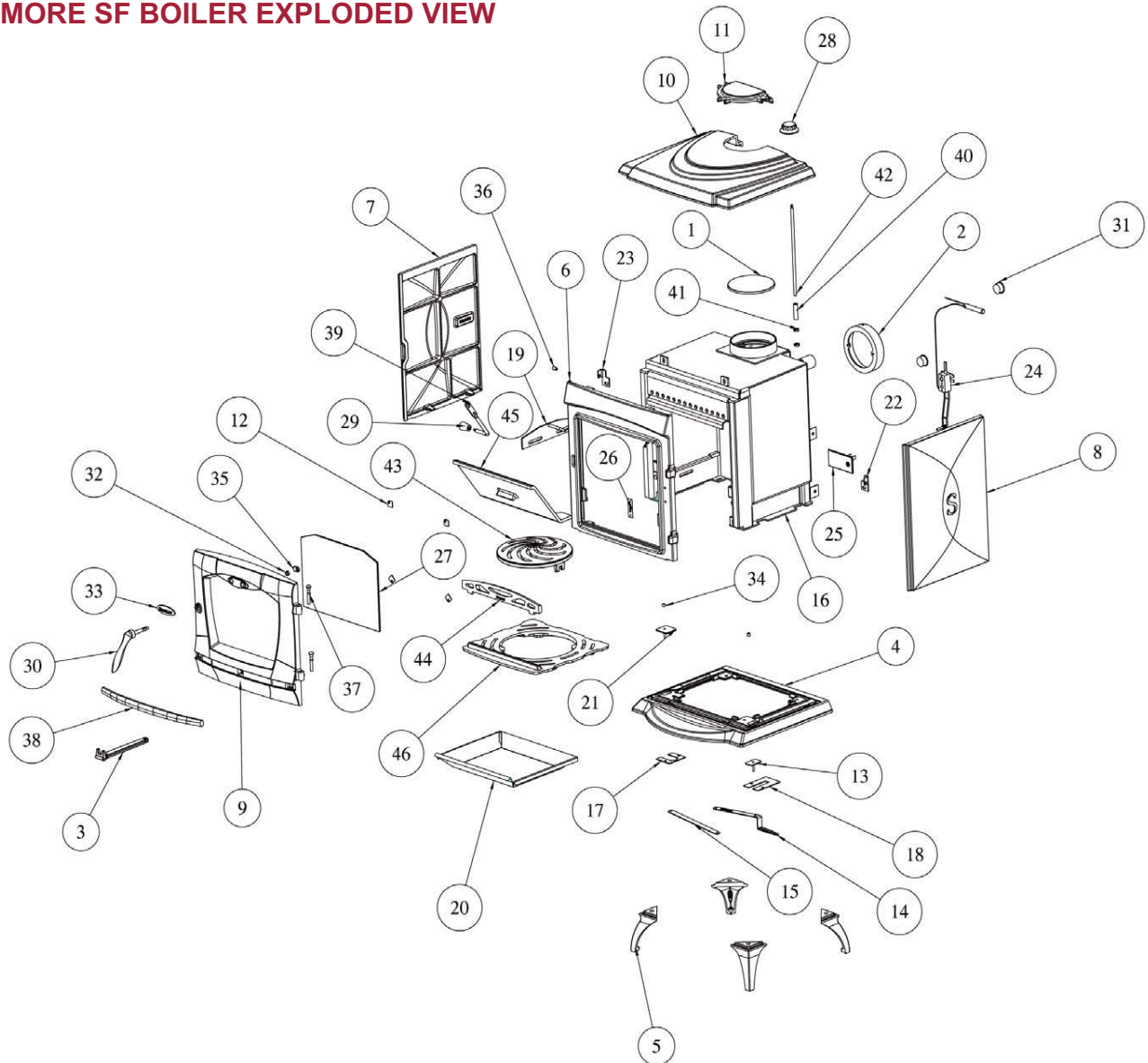


### **INSTALLATION AND OPERATING INSTRUCTIONS**

*This appliance is hot while in operation and retains its heat for a long period of time after use. Children, aged or infirm persons should be supervised at all times and should not be allowed to touch the hot working surfaces while in use or until the appliance has thoroughly cooled.*

*When using the boiler stove in situations where children, aged and/or infirm persons are present a fire-guard must be used to prevent accidental contact with the stove. The fireguard should be manufactured in accordance with BS 8423:2002.*

## ARDMORE SF BOILER EXPLODED VIEW



- |  |   |
|--|---|
| 1. FLUE BLANKING PLATE - <b>B0006AXX</b>       | 26. SERIAL NUMBER PLATE - <b>N00234BXX</b>    |
| 2. FLUE SPIGOT - <b>B00007BXX</b>              | 27. GLASS - <b>T00102AXX</b>                  |
| 3. OPERATING TOOL - <b>B00009DXX</b>           | 28. AIR CONTROL KNOB - <b>U00006AXX</b>       |
| 4. BASE - <b>B00620AXX</b>                     | 29. SECONDARY AIR CONTROL - <b>U00018AXX</b>  |
| 5. STOVE LEG - <b>B00621AXX</b>                | 30. DOOR HANDLE - <b>U00191AXX</b>            |
| 6. FRONT - <b>B00622AXX</b>                    | 31. BOILER PLUG - <b>V00016AXX</b>            |
| 7. LEFT HAND SIDE - <b>B00623AXX</b>           | 32. SPACER TO DOOR HANDLE - <b>V00035AXX</b>  |
| 8. RIGHT HAND SIDE - <b>B00624AXX</b>          | 33. BADGE - <b>V00912AXX</b>                  |
| 9. FIRE DOOR - <b>B00625AXX</b>                | 34. SPACER - <b>V00956AXX</b>                 |
| 10. HOB - <b>B00626AXX</b>                     | 35. DOOR CATCH - <b>V00985AXX</b>             |
| 11. HOB FILLER PIECE - <b>B00629AXX</b>        | 36. SPACER - <b>V00991AXX</b>                 |
| 12. DOOR GLASS CLIP - <b>F00003AXX</b>         | 37. HINGE PIN (CAM ACTION) - <b>V00997AXX</b> |
| 13. DAMPER PLATE RH - <b>F01109AXX</b>         | 38. FRONT STRIP - <b>V01008AXX</b>            |
| 14. DAMPER LINK SHORT - <b>F01110AXX</b>       | 39. RIDDLING ROD - <b>V01011AXX</b>           |
| 15. DAMPER LINK LONG - <b>F01111AXX</b>        | 40. RUBBER EXTENSION - <b>V01026AXX</b>       |
| 16. BOILER - <b>F01117AXX</b>                  | 41. CONSTANT TENSION CLAMP - <b>V01027AXX</b> |
| 17. COVER PLATE LH - <b>F01118AXX</b>          | 42. THERMOSTAT CONTROL ROD - <b>V01029AXX</b> |
| 18. COVER PLATE RH - <b>F01119AXX</b>          | 43. GRATE - <b>Z00036AXX</b>                  |
| 19. RIDDLING LINK - <b>F01120AXX</b>           | 44. FIRE FENCE - <b>Z00049AXX</b>             |
| 20. ASHPAN - <b>F01130AXX</b>                  | 45. CLEANING DOOR - <b>Z00060AXX</b>          |
| 21. DAMPER PLATE LH - <b>F01151AXX</b>         | 46. GRATE SUPPORT PLATE - <b>Z00061AXX</b>    |
| 22. SIDE PANEL BRACKET RH - <b>F01152AXX</b>   |   |
| 23. SIDE PANEL BRACKET LH - <b>F01153AXX</b>   |   |
| 24. THERMOSTAT - <b>G00479AXX</b>              |   |
| 25. THERMOSTAT DAMPER PLATE - <b>F01132AXX</b> |   |