

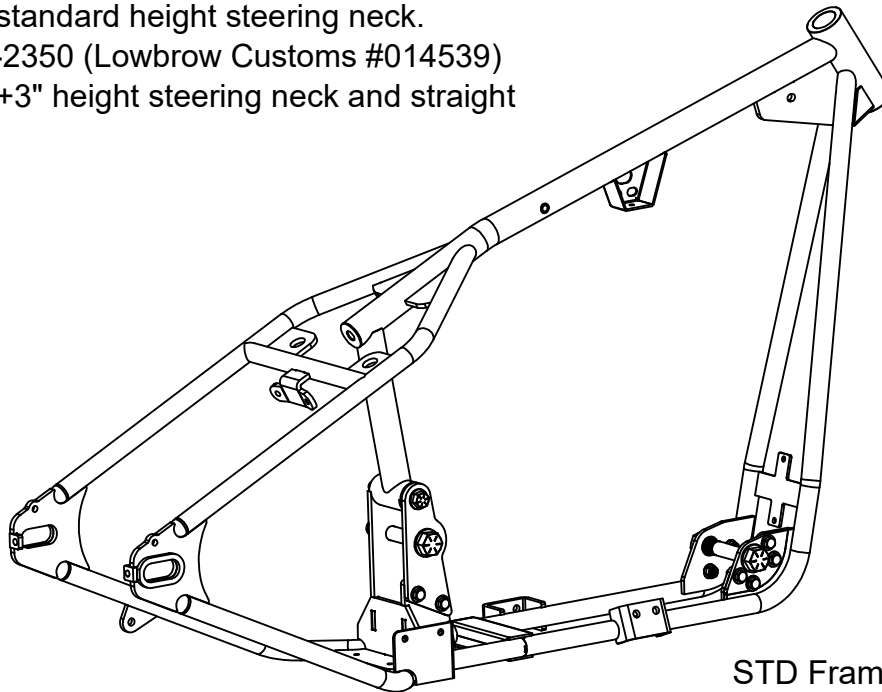
Gasbox Full Rigid Frames for 2004-2022 Harley Davidson Sportsters (Except Revolution Max engines)



For 2004-2022 Harley-Davidson Sportster Engines

- Includes MSO (Manufacturer's Statement of Origin).
- Highest quality available with perfect fit And finish.
- Made In Cleveland, Ohio, USA.

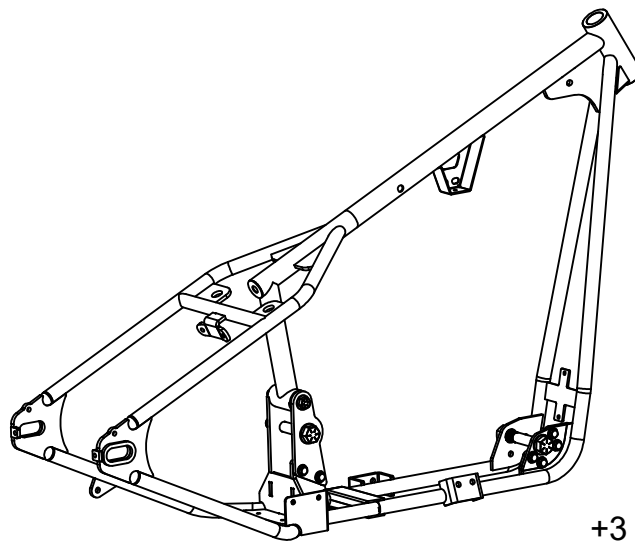
- Gasbox #A-2300 (Lowbrow Customs # 014538)
Frame has standard height steering neck.
- Gasbox #A-2350 (Lowbrow Customs #014539)
Frame has +3" height steering neck and straight backbone.



STD Frame

The Gasbox full frames are the highest quality and best engineered available. This frame allows direct bolt-in fitment for 2004-2020 Harley Davidson Rubber Mounted EVO Sportster engines. Construction is thick walled 1 inch tubing with 1-1/2" backbone and seat post, completely TIG welded and made in Cleveland, Ohio, USA. The rigid rear has approximately 4 inches of stretch and is set up to have 2 inches of drop. The steering neck is set at 32° for a perfect stance.

The engine is rigid mounted in the frame, eliminating the rubber bushes and this works best with a rigid rear end with chain drive. The axle plates are set up for stock 1 inch or 25mm Sportster rear axles and stock axle adjusters. (NOTE: 2004 stock axles measure .75", you will need to convert to a 1" or 25mm axle) The rear brake will require a rigid-type disc brake caliper mount to pivot on the axle with an anchor rod bolted to the frame, as the stock swingarm mounted caliper bracket will not fit. The frame features the brake anchor rod tab fitted and ready to go.

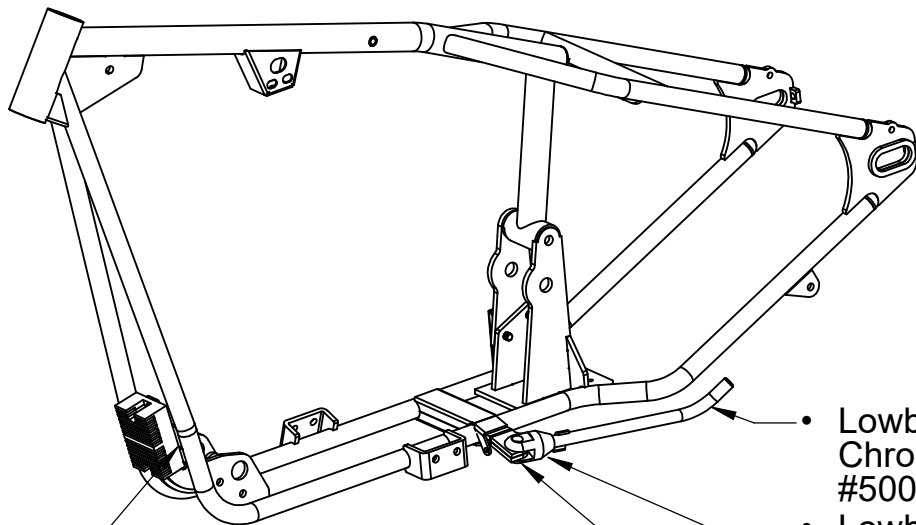


+3 Frame

- Frame includes the required rear engine mount spacer. Front Solid Motor Mount Kit will be required (Lowbrow Customs #014246)
- The frame has a welded bracket to fit EVO type top motor mounts that connects the heads to the frame. A mount such as Gasbox # 003998 will be required.
- Fits stock 2003-2020 Sportster rear wheels with 1" or 25mm axles.
- Frame comes with brackets to fit stock OEM Mid footpegs.
- Bracket for rear brake master cylinder (Harley OEM# 42456-87C, Lowbrow Customs #011468) is pre-mounted. This will allow either stock Mid footpegs and brake pedal or stock forward mount pegs, with appropriate length brake rod. Front engine mounting plates are pre-drilled for Harley forward footpeg mounts. (spacers and bolts not included.)
- Belt to chain final drive conversion is required.
- The frame has mounting for 1958-1978 OEM Sportster gas tanks or for other tanks with 16-5/8" mounting hole centers. (Lowbrow Customs #007587)
- Frame backbone is 1-1/2" diameter to fit many other chopper tanks.
- The frame has a tab to fit early Sportster kickstands. (H-D #50062-52A, Lowbrow Customs #013767.)
- The steering neck uses bearing cups for 1" diameter H-D steering stems. This allows either stock EVO Sportster front ends or other Narrow Glide front ends.
- The frame features integrated upper mounts for Horseshoe Oil Tank. (Lowbrow Customs #010404)
- The frame has an integrated bracket in front of the engine for the stock rectifier.
- Frame is pre-drilled to fit Gasbox #013519 Battery Box Adapter Plate to mount the Gasbox #009408 Universal Battery Box for YTZ12S electric start battery or Gasbox #004489 Universal Battery Box for Antigravity 12 Cell Lithium battery.
- A rear fender mounting bracket is installed and welded under the seat area.
- Each frame will receive an MSO (Manufacturer's Statement of Origin) sent separately in the mail directly from The Gasbox. This will have the frame's individual serial number-VIN number (stamped into the neck of the frame) as well as the purchaser's information. This is needed in most places when titling a custom motorcycle.

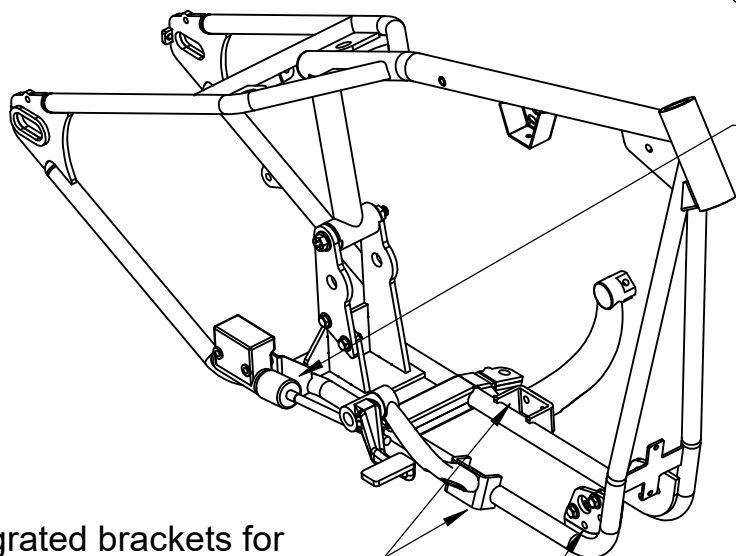
Frame Features

- The frame has mounting for 1958-1978 Sportster gas tanks or other tanks with 16-5/8" bolt centers.
- Frame backbone is 1-1/2" diameter to fit many other chopper tanks.
- Kickstand tab to fit early Sportster kickstands H-D #50062-52A. (Lowbrow Customs #013767)
- The front frame cross brace has integrated mounting tabs for the stock rectifier.
- Frame features mounts for stock Mid footpegs.
- Holes are pre-drilled for stock type forward controls.



Integrated mounting tabs for stock rectifier

- Lowbrow Customs #013767 Chrome Kickstand (H-D #50062-52A)
- Lowbrow Customs #008166 Kickstand Spring 1936-1987 Harley Davidson
- Lowbrow Customs #005746 Kickstand Mounting Pin and Screw

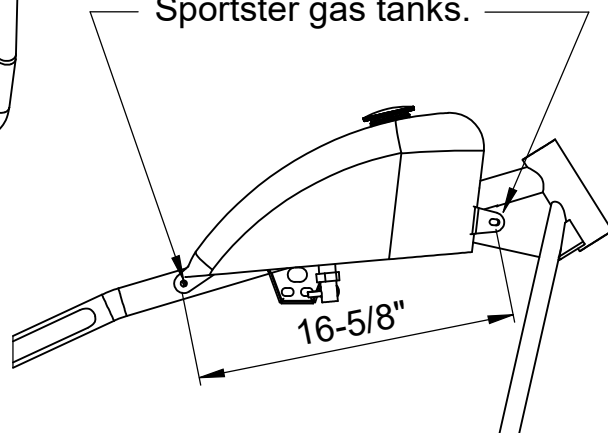


- Integrated bracket to fit rear brake master cylinder Harley OEM# 42456-87C (Lowbrow Customs #011468)

Integrated brackets for Stock Mid footpegs.

Pre-drilled holes to mount stock forward controls

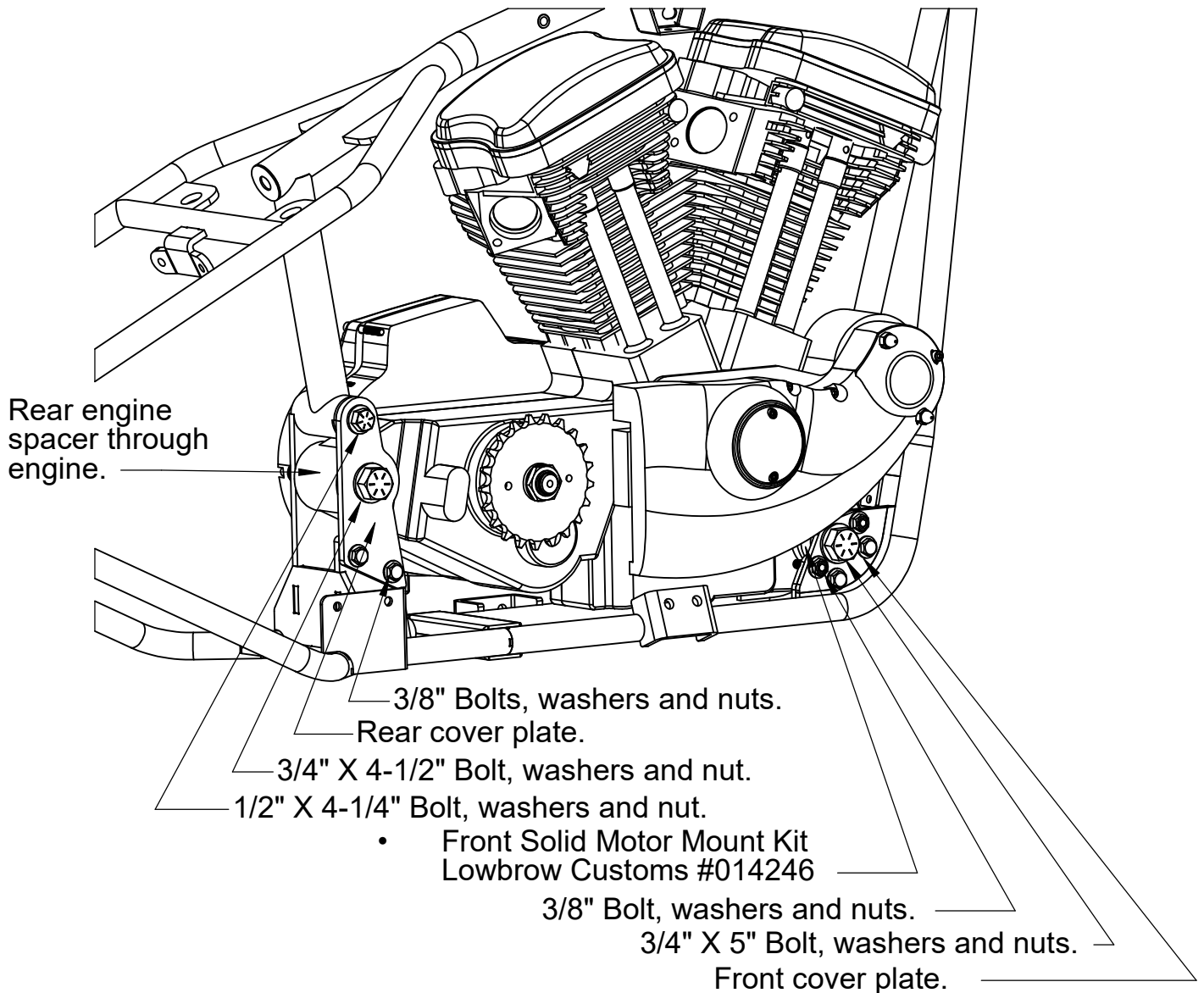
Mounting for 1958-1978 Sportster gas tanks.



Engine Mounting



- Support the engine laid down on its right side (horizontal) on blocks of wood. Protect the engine and frame from scratches with tape and padded material, especially covering the heads on the engine and the top motor mount bracket on the frame.
- Carefully lay the frame down AROUND the engine FRONT first, then rear.
- To fit the aluminum Front Solid Motor Mounts between the frame and engine, pull the frame forward slightly from the engine to fit the mount pieces into place. Fit the left side first, then the right side. Loosely thread the 3/4" X 5" bolt, washers and nut to hold the mounts in place.
- Install the rear engine spacer into the engine case and align with the frame hole to insert the 3/4" X 4-1/2" bolt.
- Install the front and rear cover plates and hand thread all bolts, nuts and washers through the frame and mounts, finger tight.
- Raise the engine and frame upright, then fit the top engine mount into place before tightening all bolts and nuts.
- Use lock nuts or thread lock on all bolts.



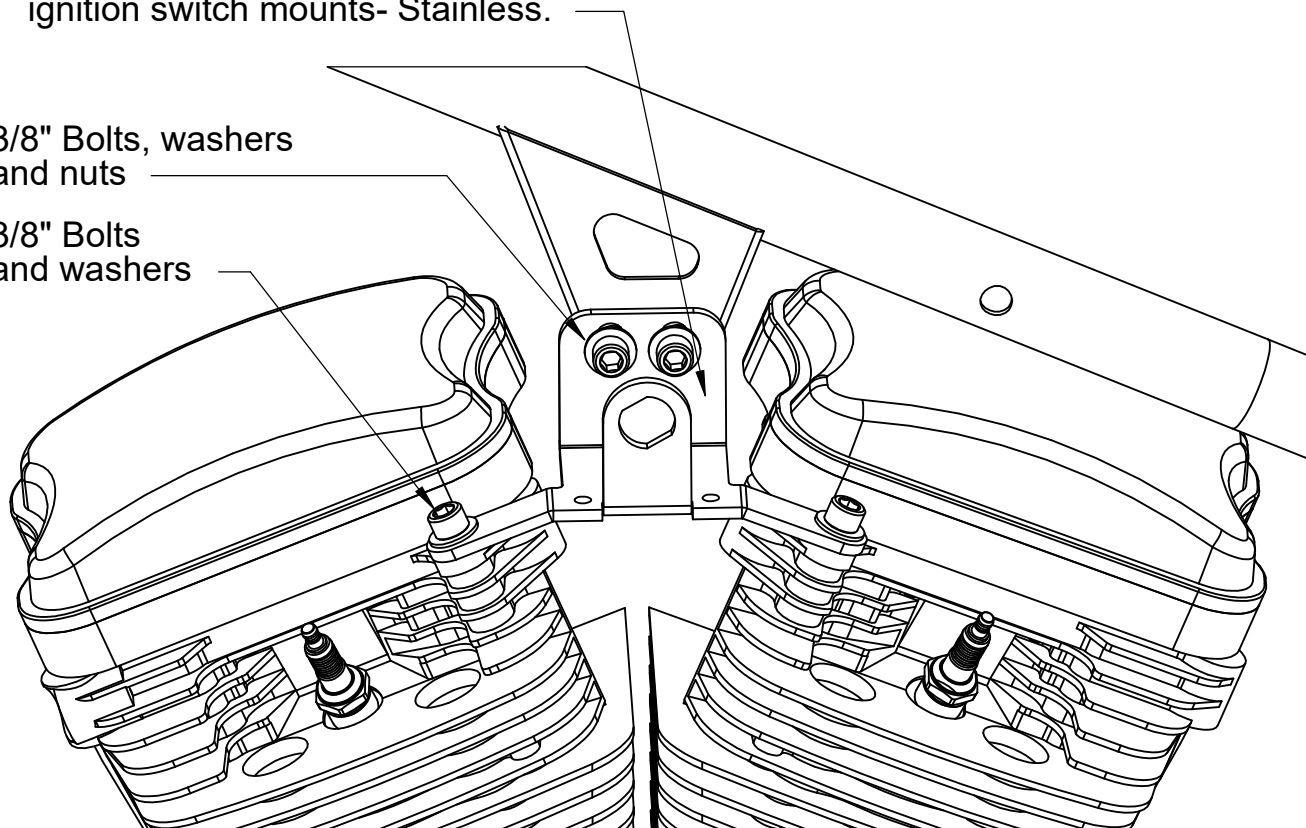
ALL PARTS AVAILABLE AT:
www.lowbrowcustoms.com

Top Motor Mount

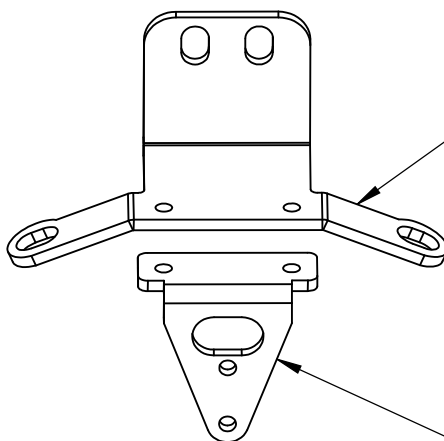
- Use lock nuts or thread lock on all bolts.
- Gasbox #003998 Top Motor Mount with carburated ignition coil and stock ignition switch mounts- Black.
- Gasbox #011892 Top Motor Mount with carburated ignition coil and stock ignition switch mounts- Stainless.

3/8" Bolts, washers and nuts

3/8" Bolts and washers



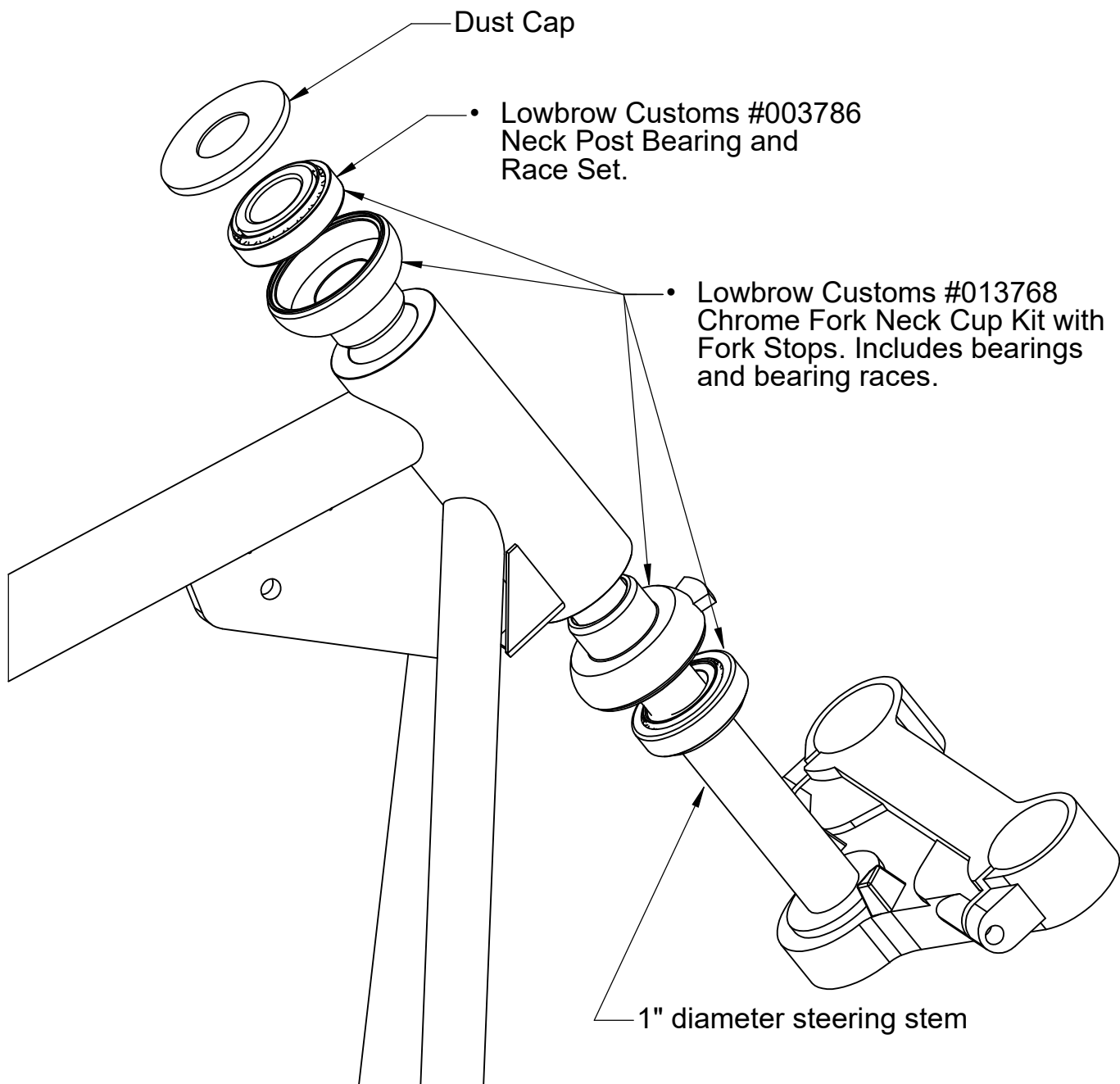
- Gasbox #010336 Top Motor Mount with carburated ignition coil relocation- Black.
- Gasbox #011893 Top Motor Mount with carburated ignition coil relocation- Stainless.



- Gasbox #A-594 EFI Ignition Coil Bracket

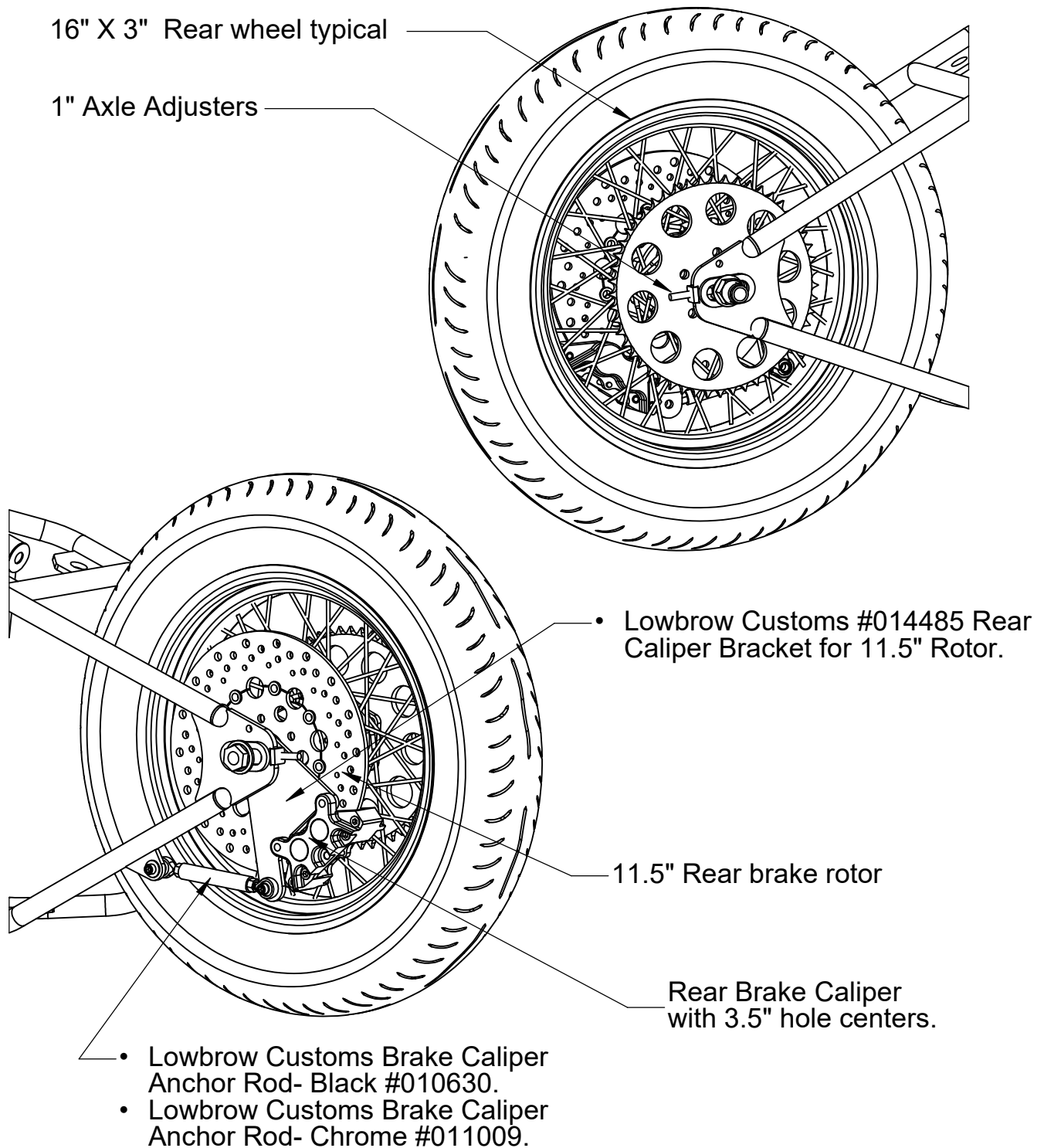
Triple Clamps

- The steering neck uses bearing cups for 1" diameter Harley Davidson steering stems.



Rear Wheel and Brake

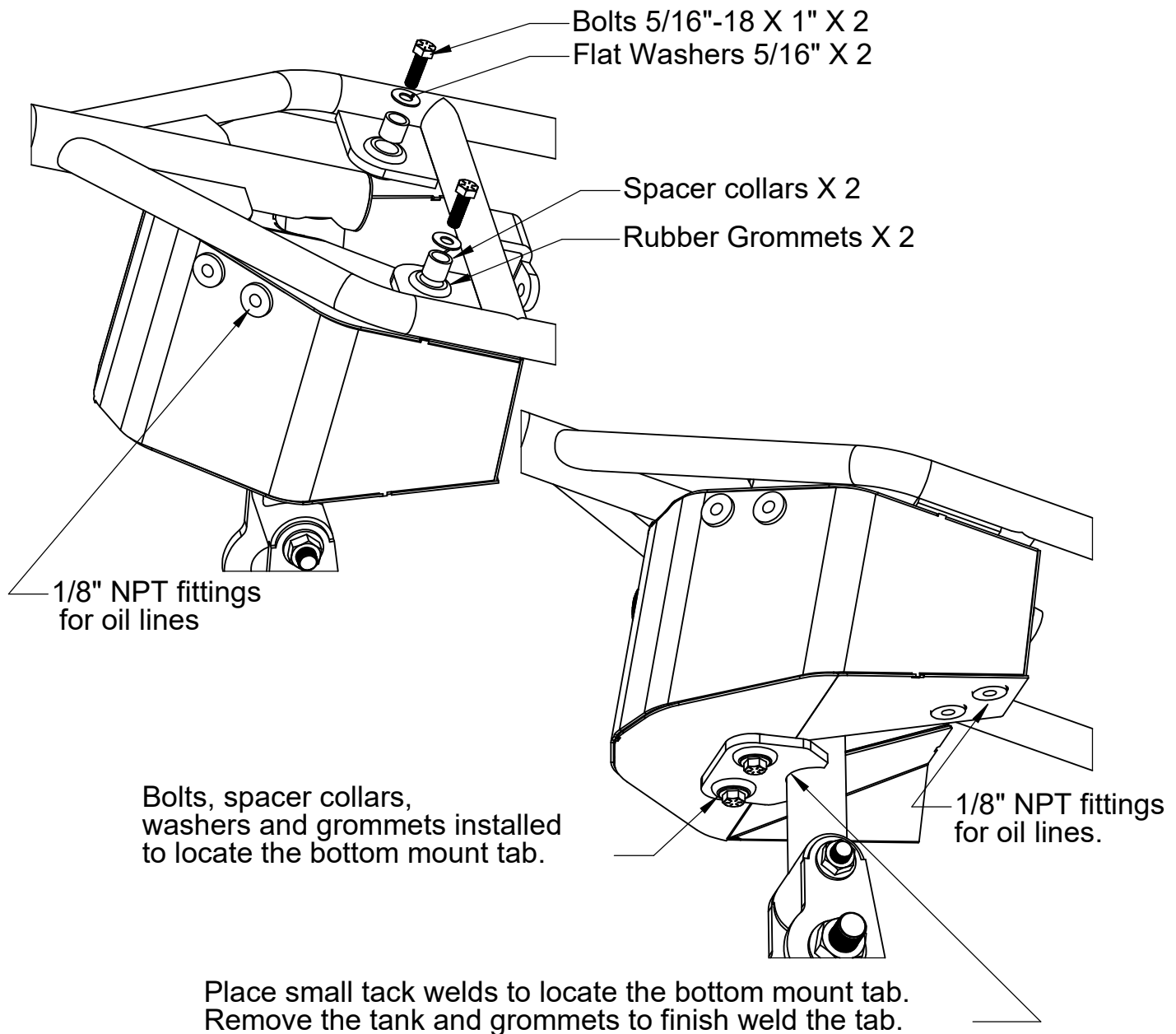
- The rear axle plates accepts a 1" or 25mm stock axle.
- Center the rear wheel in the frame with suitable 1" axle spacers.
- Use lock nuts or thread lock on all brake components.



Oil Tank Mounts

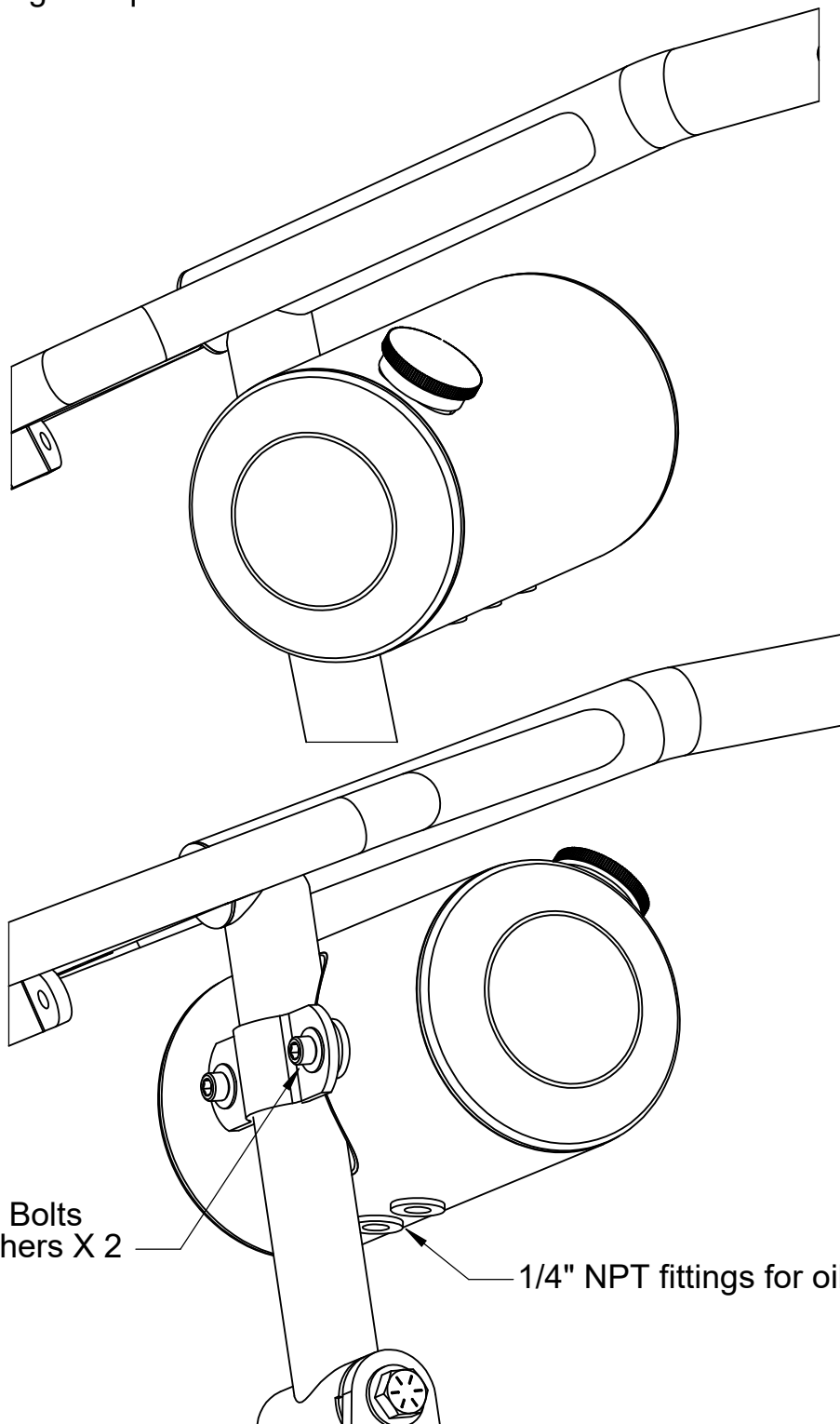
The frame has integral top mounting tabs for the Horseshoe Oil Tank. (Lowbrow Customs #010404) The tank kit has a mounting tab that requires welding to the frame to complete installation:

- Install the tank with the included rubber grommets, spacer collars, washers and bolts to the tabs on the frame.
- Install the lower mount tab to the bottom of the oil tank with rubber grommets, spacer collars, washers and bolts to locate the tab for tack welding.
- Place small tack welds to secure the bottom mount tab.
- Remove the tank and grommets to finish weld the bottom mount tab.



Clamp On Oil Tank

- Lowbrow Customs #012459 Dished Clamp-On Steel Oil Tank.
- No welding is required to mount tank.



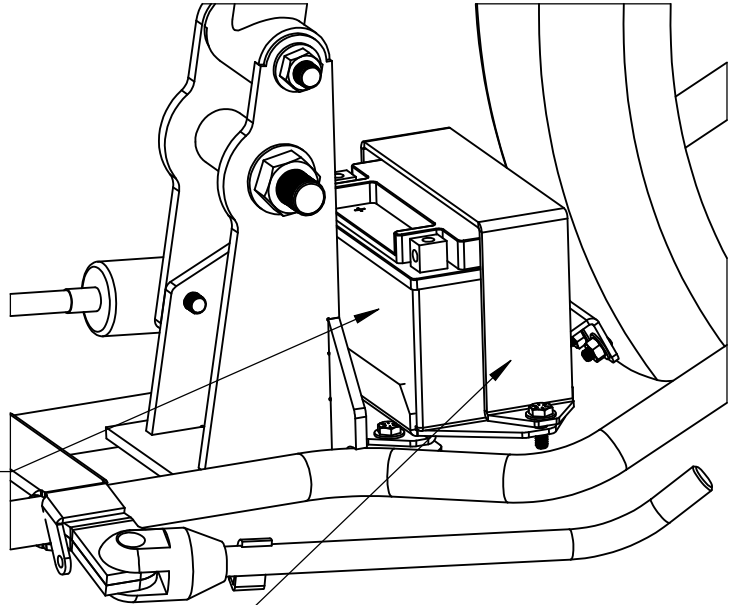
5/16"-18 Bolts
and washers X 2

1/4" NPT fittings for oil lines

Battery Mounting



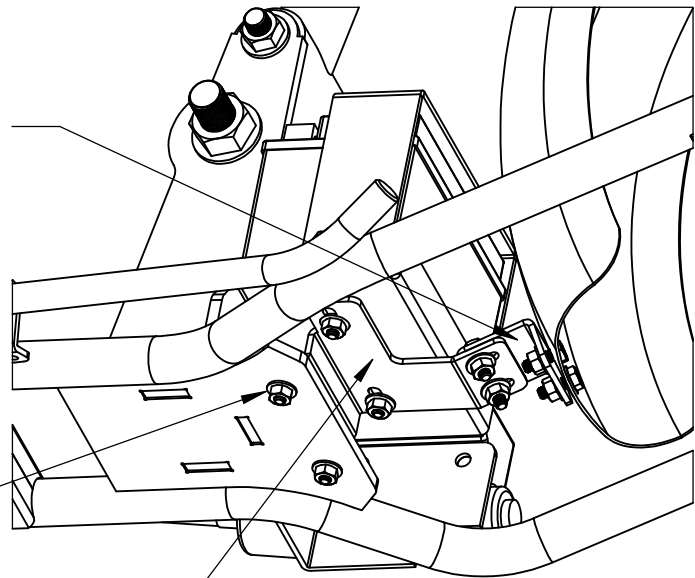
- The frame has holes pre-drilled to install Gasbox #013519 Battery Box Adapter Plate to mount the battery in front of the rear fender.
- The adapter plate can fit:
 - Gasbox #009408 Universal Battery Box for YTZ-12S electric start battery.
 - Gasbox #004489 Antigravity 12 Cell Universal Battery Box.
- The adapter plate has an adjustable tab for rear fender mounting.



- Lowbrow Customs #013002 YTZ-12S AGM electric start battery.
- Lowbrow Customs #002656 Antigravity 12 Cell Lithium battery.

- Gasbox #009408 Universal Battery Box for YTZ-12S electric start battery.
- Gasbox #004489 Universal Battery Box for Antigravity 12 Cell Lithium battery.

Rear fender mount tab
(comes with the adapter)



All hardware 1/4"-20

- Gasbox #013519 Battery Box Adapter Plate.

Fender Mounting



- There are many options for rear fender mounting, three versions are shown:
- Use lock nuts or thread lock on all fender components.

- Gasbox #011897 Box Tail Light
Universal Fender Mount Bracket.

- Gasbox #010566 Shorty DIY Sissy
Bar Kit

- Lowbrow Customs #002715
Box Chopper Tail Light.
Upper Sissy Bar bolts 5/16"

- Gasbox #001156 Steel 16"
Round Fender For Vintage
Style Tires.

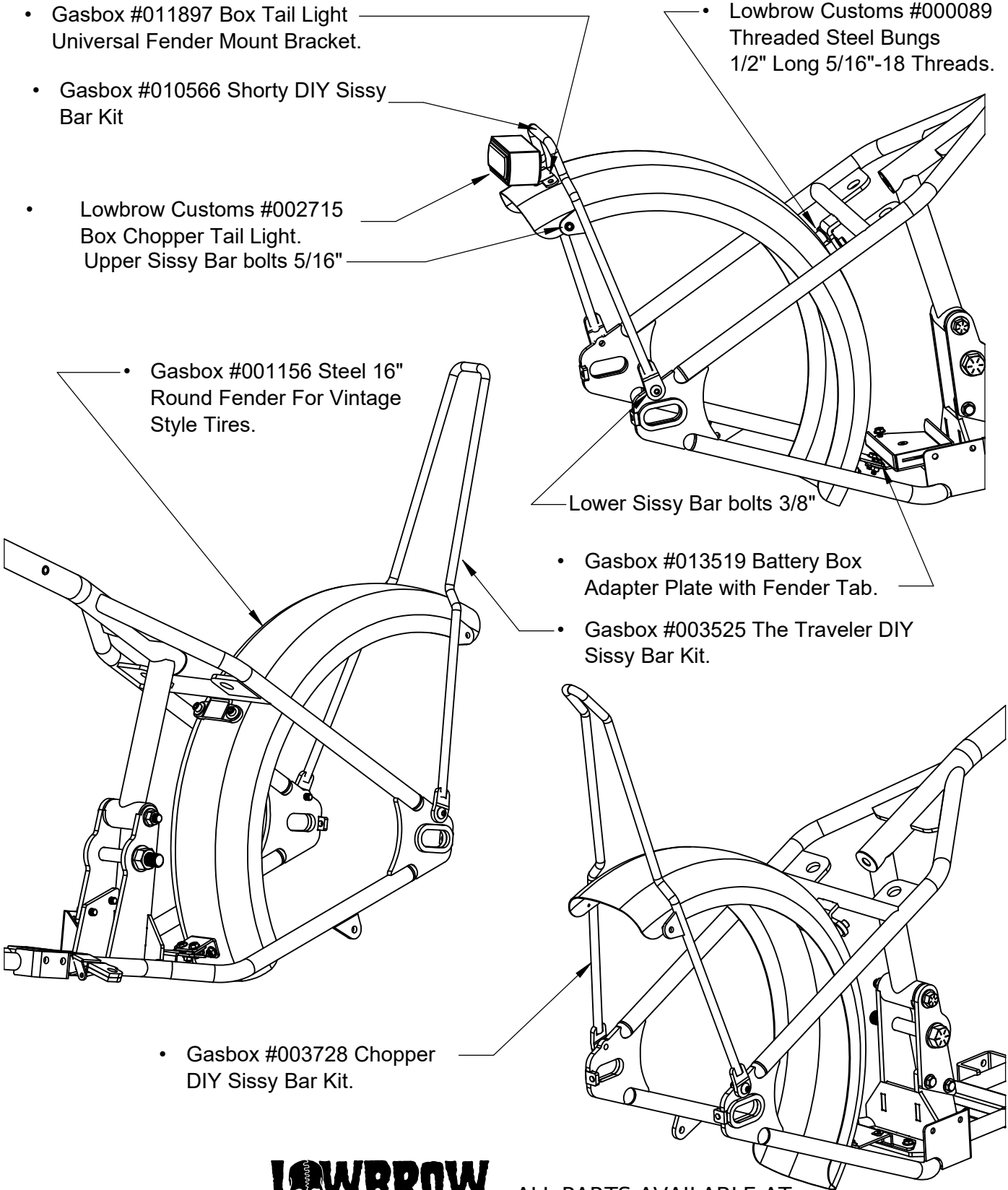
- Lowbrow Customs #000089
Threaded Steel Bungs
1/2" Long 5/16"-18 Threads.

- Lower Sissy Bar bolts 3/8"

- Gasbox #013519 Battery Box
Adapter Plate with Fender Tab.

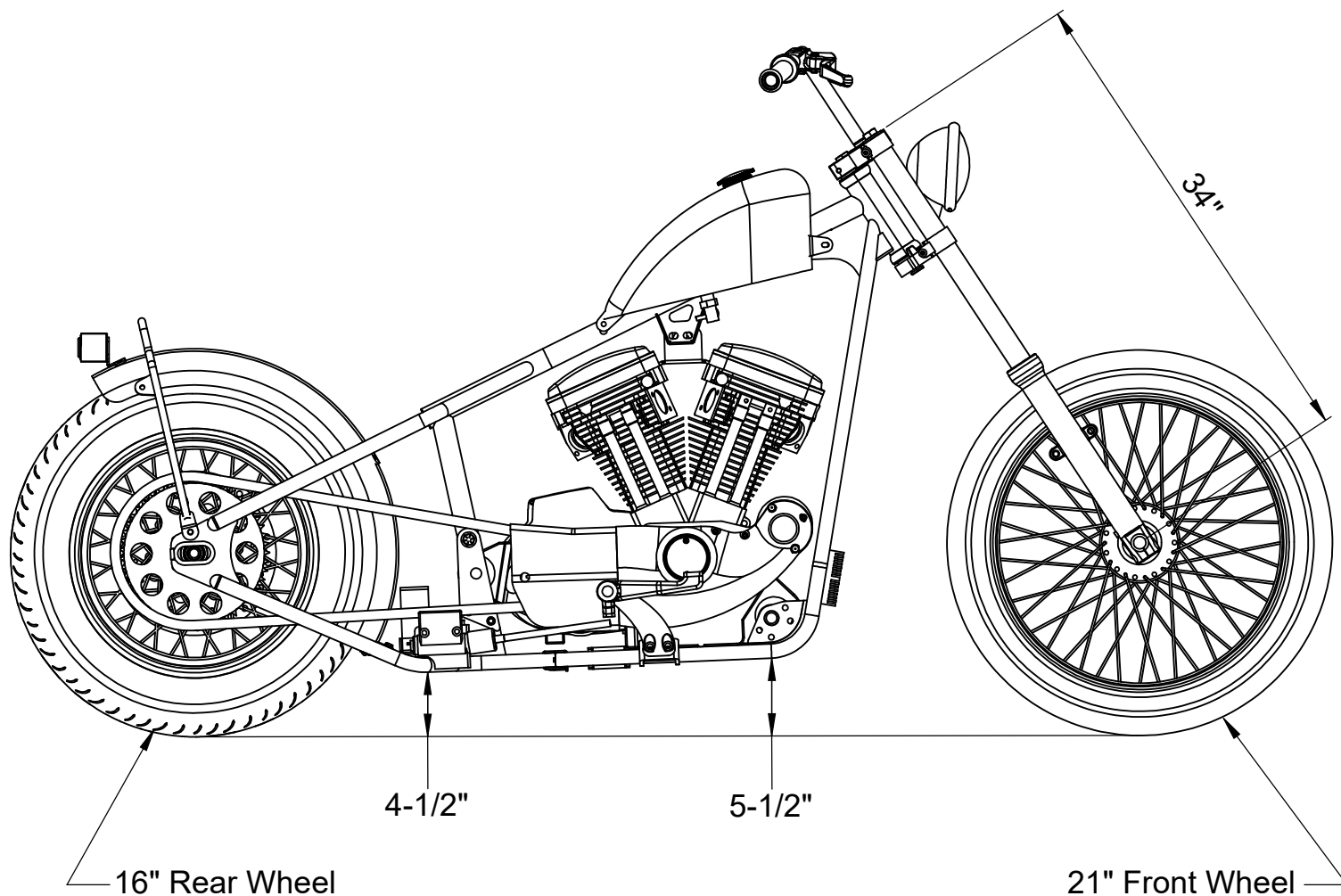
- Gasbox #003525 The Traveler DIY
Sissy Bar Kit.

- Gasbox #003728 Chopper
DIY Sissy Bar Kit.



Stance

Fork length sets the stance of the motorcycle. 2", 4" and 6" over Sportster fork tubes are available at Lowbrow Customs. A one inch rise from the rear to front of the lower frame tubes is recommended.

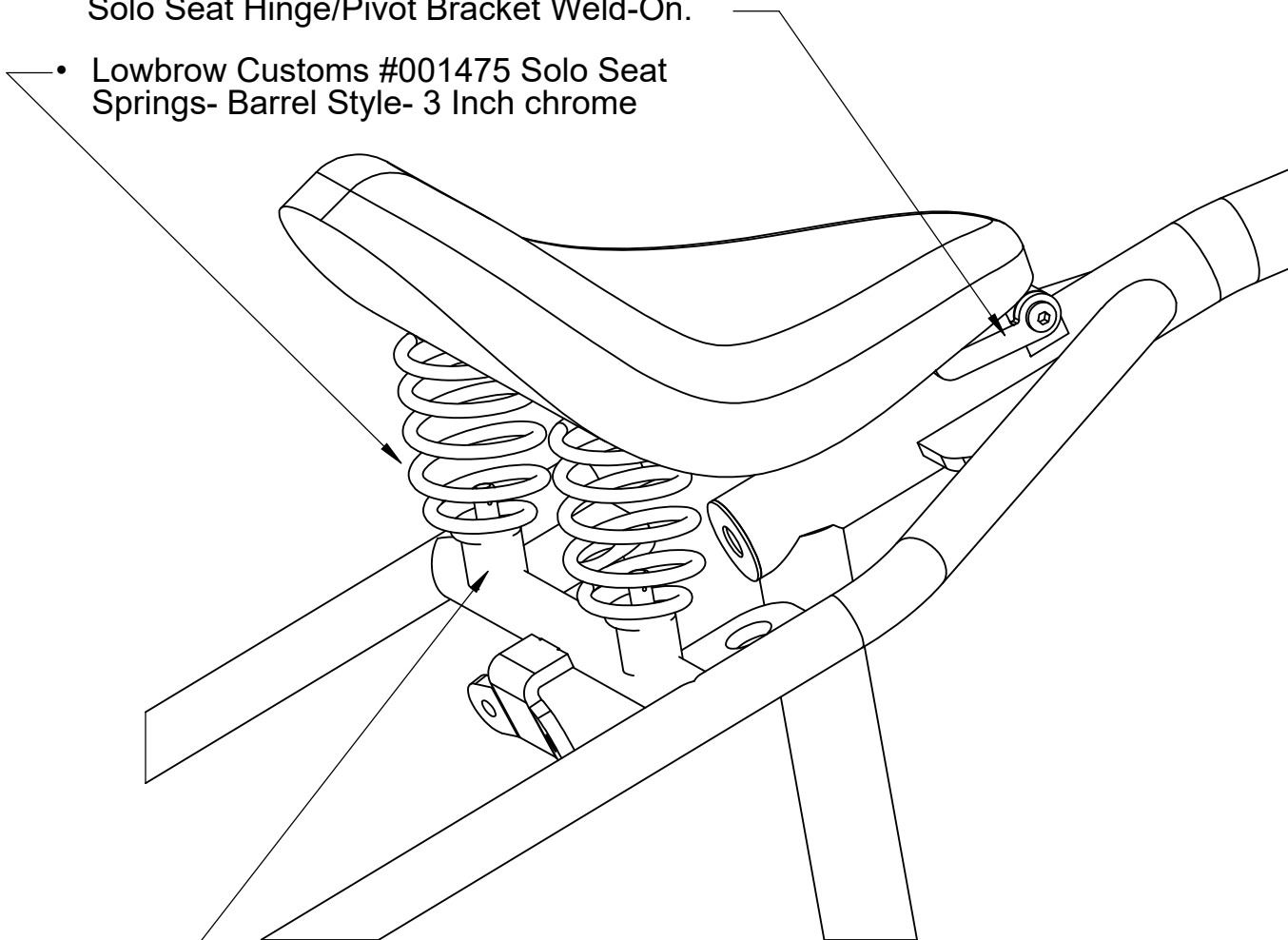


Seat Mounting

- There are many options for seats, one option is shown:

- Lowbrow Customs #009495 Black Steel Solo Seat Hinge/Pivot Bracket Weld-On.

- Lowbrow Customs #001475 Solo Seat Springs- Barrel Style- 3 Inch chrome



- Lowbrow Customs #000456 Solo Seat Weld-On Spring Mounts/Perches