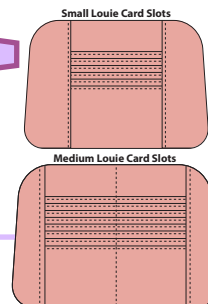


Louie Waist Pack

Add Card Slots to your Louie Waist Pack while avoiding additional bulk in your seams. This is a supplementary add-on to the Louie Waist Pack pattern. Details in this document are to be used with the Louie Waist Pack pattern.



Additional Materials

Scraps of Fusible Medium Stabilizer - *Decovil Light*; *EB-Fuse Heavy*; *Pellon Decor-Bond 809*; *Fusible Buckram*

Cutting List Adjustments

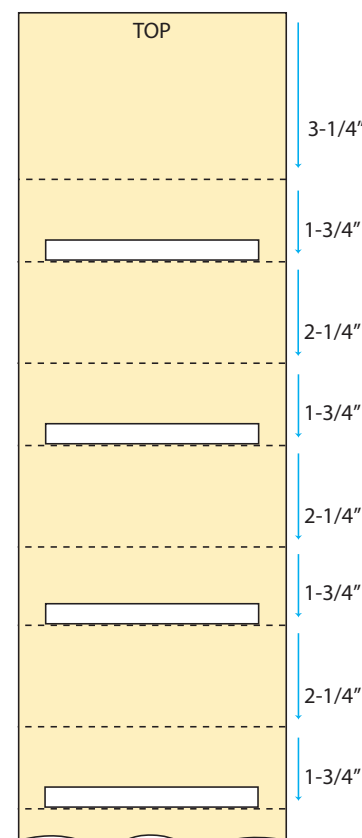
The following piece from the Louie Waist Pack pattern does **NOT** need to be cut: (1) **Main** - lining fabric

The following pieces **DO** need to be cut in addition to those in the Louie Waist Pack pattern.

Pattern Piece	Small	Medium	Lining	Stabilizer
Card Slot	4-1/2" x 26" (11.4 cm x 66 cm)	8-1/4" x 32" (21 cm x 81.3 cm)	1	
Card Slot Sides	2-3/4" x 6" (7 cm x 15.2 cm)	2" x 7" (5.1 cm x 17.8 cm)	2	
Card Slot Stabilizer	3-1/2" x 1/2" (8.9 cm x 1.3 cm)	7" x 1/2" (17.8 cm x 1.3 cm)		Small - 5 Medium - 6

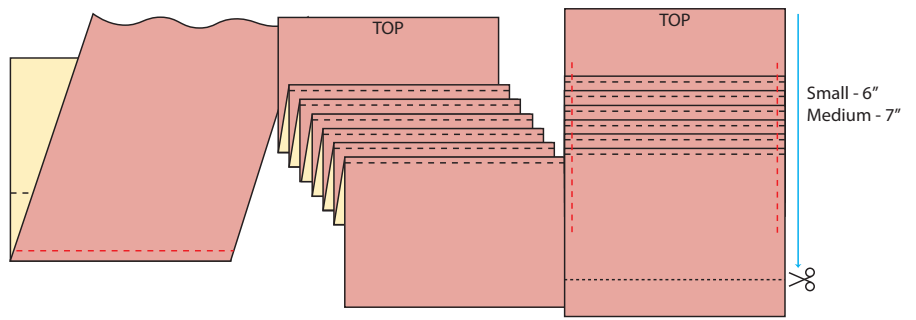
Construct the Card Slots

- Place the lining **Card Slots** piece right side down and draw a line 3-1/4" from the top edge. Measuring down from that line, draw the next line at 1-3/4". Measuring down from that line, draw the next line, and continue to do that for the following measurements:
 - 2-1/4"
 - 1-3/4"
 - 2-1/4"
 - 1-3/4"
 - 2-1/4"
 - 1-3/4"
 - 2-1/4"
 - 1-3/4"
 - 2-1/4" - **Medium** size only
 - 1-3/4" - **Medium** size only
- Place one of the **Card Slot Stabilizers** with the fusible side against the lining **Card Slot** piece, with the long edge along the top of the 1-3/4" lines you drew (the second line, then b, d, f, h, and j). Fuse them in place.
- Fold the lining **Card Slot** piece along those same lines (along the bottom edge of the stabilizer), wrong sides together, and press well. Topstitch each of those folds (these are the tops of the card slots).
- Fold the lining **Card Slot** piece along the other lines (with no stabilizer), right sides together, and press well. Once all folds are in place, you should have a series of mountains and valleys.



5. Baste both sides with 1/8" seam allowance and a long stitch length, ensuring the **Card Slots** stay straight.

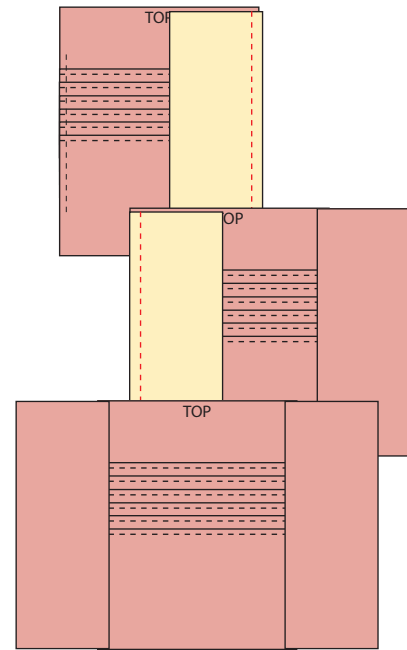
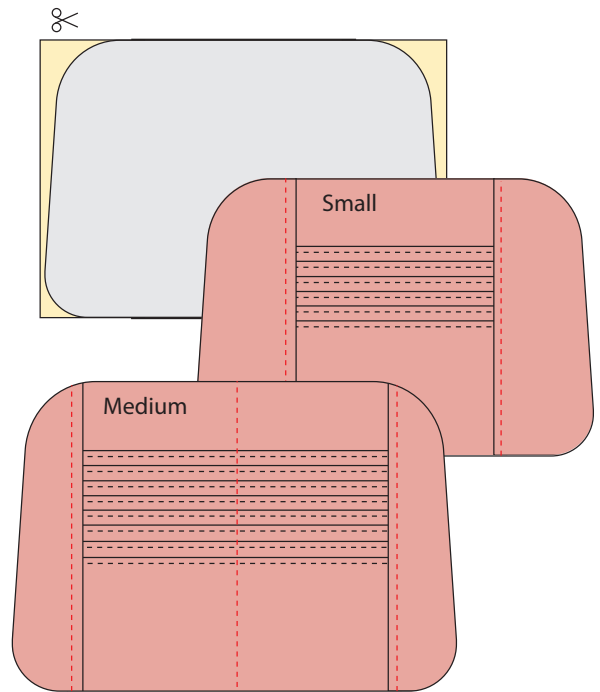
6. Trim the bottom from the **Card Slots** so it measures 6" tall for Small (7" tall for Medium).



7. Place a **Card Slot Side** right sides together with the constructed **Card Slots**, aligning the side. Sew with **3/8" seam allowance**. Then press the **Card Slot Side** away from the **Card Slots**. Do not topstitch yet.

8. Repeat step 7 with the other **Card Slot Side**.

9. Fuse the extra piece of **Main** interfacing to the back of the constructed **Card Slots** piece, centered side to side and with the top edge aligned. Trim along the edges of the interfacing, or use the **Main** pattern piece with the top edge aligned, and the pattern piece centered side to side, to trim it down.



10. Topstitch the seams along the **Card Slot Sides** with 1/8" seam allowance.

11. **Medium size only** - Topstitch the center of the **Card Slots** to split them in half.

Use this piece as the back of the interior, using it in step 4 of the pattern under the section "**Construct the Main Body**". By keeping it against the back panel of the Louie Waist Pack, it prevents it from adding weight to the front of the pack, and keeps the cards from falling out when opening the pack.

You now have extra storage in your Louie Waist Pack!

The Fine Print

This pattern add-on was created by Tara Sinclair of UhOh Creations. Please do not copy, claim as your own, or duplicate any part of it. This pattern may be used for individual home production only. Mass Production is not supported.

When sharing your creation on social media, use the hashtags **#uhohcreationspattern** and **#louiewaistpack**.

Join my facebook group **Sewing UhOh Creations Patterns**.

Follow me on Facebook and Instagram **@uhohcreations**. Email any questions to **uhohcreations@outlook.com**.

Find my other designs at **www.uhohcreations.com**.