



**PACKAGING: All packaging materials (plastic bags, polystyrene foam, etc.) are potentially dangerous and should be kept away from children.**

## 1. HOLES FOR THE TAP CONNECTIONS

The sink comes to you with pre-prepared semi-bores of Ø 35 mm on both sides. This lets you choose the side where you wish to install the tap. After deciding which side you wish to use, the hole can be completed using a **DIAMOND CORE** installed on a manual drill, taking care to work from the non-visible side.

## 2. BORING THE WORK SURFACE FOR INSERTING THE SINK

Place the sink upside-down on the work surface where it is to be installed. Trace around the outer edge of the sink using a pencil. Now move the sink and draw a dotted line 1cm inside the one you have just drawn using the sink as a template. Cut along the dotted line using the appropriate tools.

## 3. FITTING THE SINK INTO THE WORK SURFACE

All our sinks come equipped with pre-installed mounting clamps. The following steps explain how to install the sink correctly: A special sealant is supplied with the sink. Apply it all around the outer edge of the sink, wherever it will come into contact with the work surface when the installation is complete. Make sure that all the clasps of the fastenings are facing inwards. Insert the sink into the cut-out area of the work surface making sure it is centred. Tighten the fastenings using the adjusting screws, starting from the centre and working in a criss-cross order.

## INSTALLING THE DRAINAGE (DRAINS AND DRAIN-TRAPS)

Follow the instructions provided with the drain accessories.

## UPKEEP AND CARE

Your sink will last longer if it is taken care of properly. Correct care also helps to keep it looking attractive for a long time.

### 1. ROUTINE CARE

The best way to clean the sink is to use a soft cloth or sponge, with commonly available detergents diluted in warm water. Strong detergents should not be used. The surface of the sink should be washed with water, drying the damp parts with a spongy cloth. This will help prevent the formation of lime scale marks, especially on darker coloured sinks.

### 2. REMOVING STUBBORN STAINS

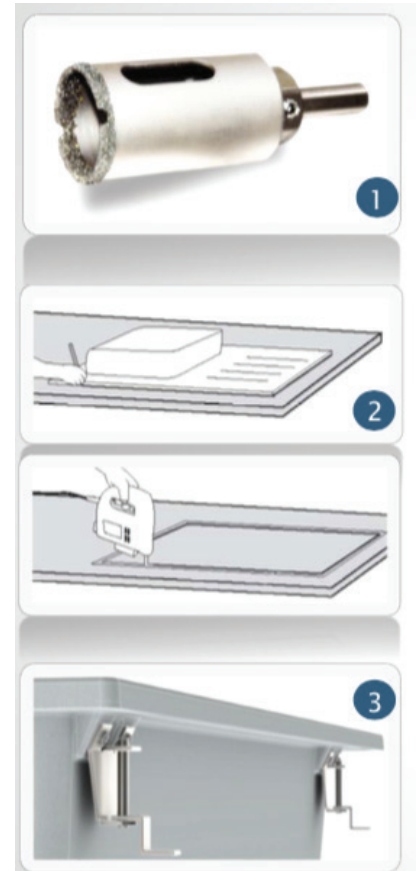
Traces of stubborn dirt can be removed with a cloth soaked in diluted bleach or alcohol or, in extreme cases, with acetone. After this, rinse the surface well with water.

### 3. SPECIAL CLEANING

The sink is composed of a mixture with a high percentage of inert fillers that make the product very hard and strong. This particular characteristic may cause streaking due to the continual rubbing of metal pans. The streaks are due to the release of small particles of metal, which can be removed with a brush (like Scotch Brite), together with commonly used detergents.

### 4. FURTHER RECOMMENDATIONS

Do not use highly alkaline substances like ammonia or caustic soda. Do not put pans or coffee-pots that have just been taken off the heat (which sometimes reach 500°C) directly in the sink. Do not pour boiling oil into the sink, as this could deform the drain pipes. Do not cut food directly in the sink. Chopping boards should be used for this purpose. Lime scale residue can be removed with vinegar or acetic acid. Do not put pans or coffee pots that have just been taken off the heat (which sometimes reach 500°C) directly in the sink.



**All warranty service calls must be booked via the customer care department.**

**The team can be contacted on 1 300 85 64 11 *option 1* or [customercare@eurolinx.com.au](mailto:customercare@eurolinx.com.au)**