
omega

Instructions for the Use and Care and Installation of

ORW6XA

ORW9XA

Wall Canopy Rangehoods

Thank you for introducing our family to yours

At Omega, we understand that cooking, cleaning and washing may not be your favourite things in the world. That's why we created a range of no-nonsense, reliable products that always get the job done for you. With the features you need and nothing you don't. What's more, they're made to fit perfectly into your home life and your wallet.

We aim to simplify any further appliance purchases. When researching our products you will find a range of icons that visually represent our products key features. Visit our website to learn more about these icons and the features and benefits of our products.

You are welcoming an Omega appliance into your place and you can be sure it'll always serve you well.

For important information about your Omega such as warranty registration, online manuals, specifications and catalogues, please visit

www.omegaappliances.com.au/customer (if you are in Australia) or

www.omegaappliances.co.nz/customer (if you are in New Zealand).

Make sure you activate your product warranty on our websites on the links above.

If you want to know more about promotions, to receive cool tips and tailor made content, like us on www.facebook.com/omegaappliances and follow us on www.instagram.com/omegaappliances_australia.

We hope you love this product as much as we do!



www.omegaappliances.com.au / www.omegaappliances.co.nz



[omegaappliances](https://www.facebook.com/omegaappliances)



[omegaappliances_australia](https://www.instagram.com/omegaappliances_australia)

omega. Always serves you well.

CONTENTS

1	Notice
2	Features
3	Installation
4	Safety Warnings
5	Operation Instructions
6	Maintenance
7	Troubleshooting
8	Specification

It is important that you retain these instructions, proof of purchase as well as other important documents about this product for future reference.

Due to continual product development, Omega reserves the right to alter specifications or appearances without notice.

Dispose of packaging responsibly – recycle where facilities are available.

(1) NOTICE

1. Thank you for choosing our cooker hood. Please read the instruction manual carefully before use.
2. The installation work must be undertaken by a qualified electrician and competent installer.
3. The manufacturer disclaims all liability for any damage or injury caused as a result of not following instructions for installation contained in the following text.

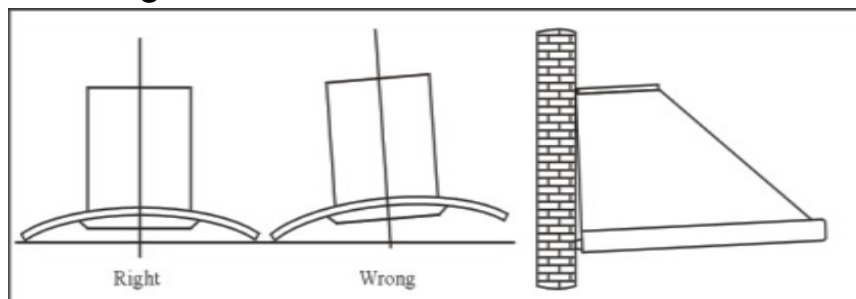
The cooker hood is rated for use on 220/240v, 50Hz.

(2) FEATURES

1. The cooker hood uses high quality materials, and is made with a streamlined design.
2. Equipped with a high power electric motor and centrifugal fan, it produces strong suction with low noise, and features a non stick grease filter which is easy to clean.
3. The isolated low voltage (12 volt) circuit board control, means the halogen lights are brighter and safer than incandescent alternatives.
4. Due to the special wind tunnel construction and filter design, any odours and dust will be absorbed quickly.

(3) INSTALLATION

1. Before installation, please ensure the area is clean, to avoid suction of the remaining bits of broken wood and dust.
2. The canopy hood cannot share the same air ventilation ducting as other appliances, such as gas and electric heaters.
3. The bending of the ventilation ducting should be $\geq 120^\circ$, parallel or above the exit vent, and should be connected through the external wall.
4. After installation, make sure that the extractor is level to avoid grease collection at one end.



Pic5

NOTE: Remove all protective plastic coatings from the stainless steel surfaces before use.

(3) INSTALLATION (Cont.)

3.1 The cooker hood should be placed at a distance of 65-75cm from the cooking surface for the best effect. See Pic 1.

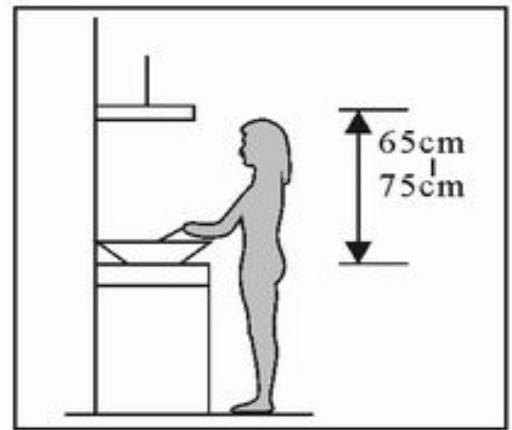
3.2 Install the hook in a suitable place once the installation height is fixed, and keep it vertically aligned. The fixed position of the inside chimney bracket determines the location of the chimney.

3.3 Fix the outside chimney bracket on the outside chimney, and be sure that the inside chimney can be adjusted in height freely, as well as being able to fix the exhaust pipe. Afterwards, install the exhaust pipe and chimney on the cooker hood. See Pic 3.

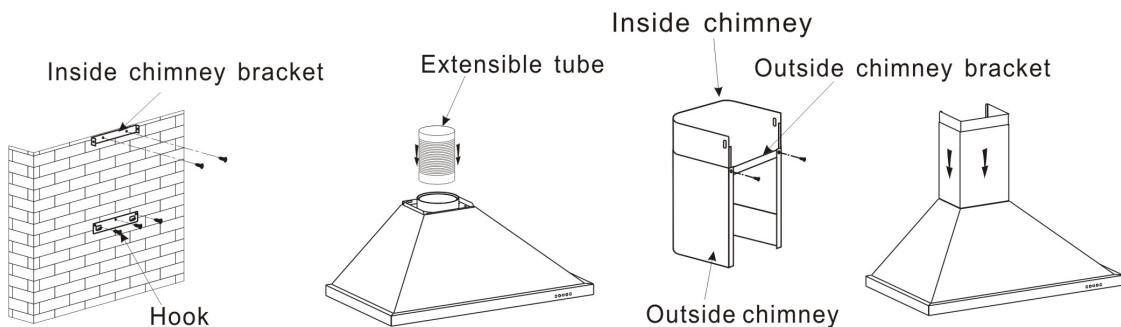
3.4 Lift the cooker hood onto the hook. See Pic 4.

3.5 Adjust the height of the inside chimney to the position of the inside chimney bracket, and fix by screw. After adjusting the position, fix the body with safety screws. See Pic 5.

Note: The two safety screw holes are positioned on the back casing, with diameter of 6mm.

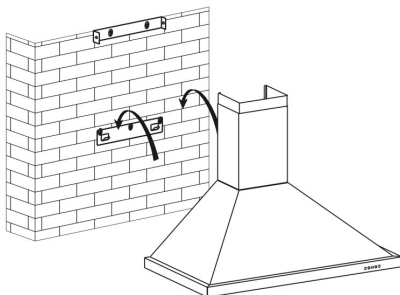


Pic1

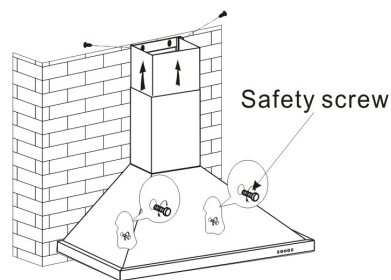


Pic2

Pic3



Pic4



Pic5

(4) SAFETY WARNINGS

- ✧ This appliance is not intended for use by persons (including children) with reduced physical, sensory or mental capabilities, or lack of experience or knowledge, unless they have been given supervision or instruction concerning the use of the appliance by a person responsible for their safety. Young children should be supervised to insure that they do not play with the appliance.
- ✧ If the power cord is damaged, it must be replaced by the manufacturer, an authorized service centre or similarly qualified persons to avoid a hazard.
- ✧ The exhaust air must not be discharged into a flue which is used for exhausting fumes from appliance burning gas or other fuels (not applicable to appliances that only discharge the air back into the room).
- ✧ Your cooker hood is for domestic use only, not suitable for barbecue, fast - food shops, and other commercial use.
- ✧ Any installation work must be carried out by a qualified electrician or competent person.
- ✧ The cooker hood and its filter mesh should be cleaned regularly in order to keep in good working order. There is a fire risk if cleaning is not carried out in accordance with the instruction.
- ✧ Before cleaning, always ensure that you have switched your cooker hood off.
- ✧ Do not flambé underneath range hood.
- ✧ If there is any fault with your cooker hood, please call the customer service number in the Warranty Card.
- ✧ Please keep the room adequately ventilated when your cooker hood and gas hob are working.
- ✧ Before installation and usage, read all the instructions and make sure that the voltage (V) and the frequency (Hz) indicated on your cooker hood are exactly the same as the voltage (V) and the frequency (Hz) in your home.
- ✧ To ensure that you get the best Warranty experience for your cooker hood, please provide copies of the Warranty Card and purchase receipt, when booking warranty work with the Customer Service department.
- ✧ CAUTION: Accessible parts may become hot when used with cooking appliances.
- ✧ Warning: Failure to install the screws or fixing devices in accordance with the instructions may result in an electrical hazard.

(5) OPERATION INSTRUCTIONS

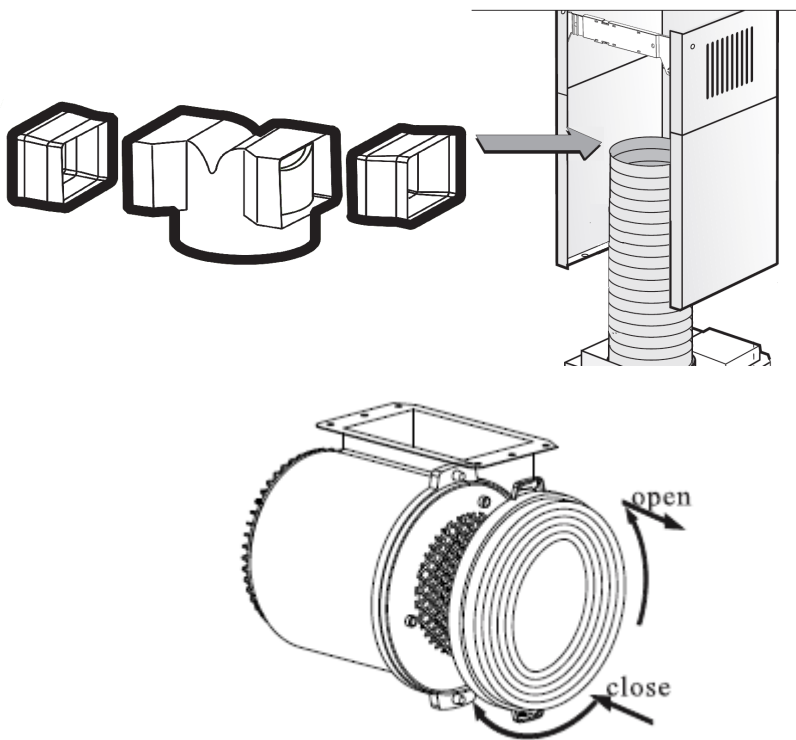
The re-usable aluminium grease filters supplied with this rangehood should be cleaned every month or so to avoid grease build-up.

To remove the grease filter, release the locking mechanism at the front of the filter, and lower the filter slightly to unhook it at the back. Whilst the filter is removed, clean off any residual grease from the housing to avoid fire risk.

When replacing the grease filters, ensure that the locking mechanism is facing down.

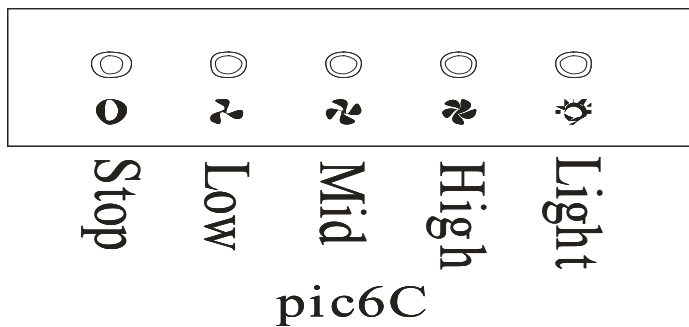
If the rangehood is used in re-circulation mode, attach the re-circulating kit to the duct and line up to the vent to allow the air escape through the vents. The activated charcoal filter must be in place. These charcoal filters are designed to absorb cooking odours and are located in the canopy above the grease filters. Before fitting or replacing charcoal filters, the grease filters must first be removed.

To remove, or install, the charcoal filter - twist the charcoal filter in the direction shown below.



SPEED ADJUSTMENT - See pictures

1. Push 'Stop' button, and the motor will stop.
2. Push the 'Low' button, the buzzer will buzz once, and the motor runs at low speed.
3. Push the 'Mid' button, the buzzer will buzz once, and the motor runs at mid speed.
4. Push the 'High' button, the buzzer will buzz once, and the motor runs at high speed.
5. Push the 'Light' button and the two lights will come on. Push it again and the light will turn off.



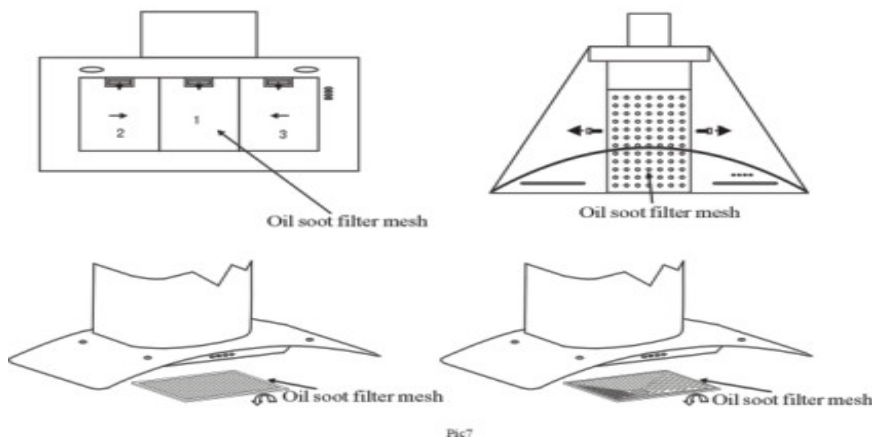
(6) MAINTENANCE

6.1 Cleaning the grease filter mesh

The filter mesh is made of high-density stainless steel. Please do not use corrosive detergent on it. Keeping this filter clean will keep the appliance running correctly (at least every 4-6 weeks). Please strictly follow the guidelines below.

Method 1: Place the mesh in 40 - 50 DegC clean water, add in a small amount of detergent, and soak for 2 - 3 minutes. Wear gloves, and clean with a soft brush. Do not apply too much pressure, as the mesh is delicate and will damage easily.

Method 2: The grease filters can be put into a dishwasher. To do so, set the temperature at around 60 degrees.



6.2 Notice of cleaning cooker hood

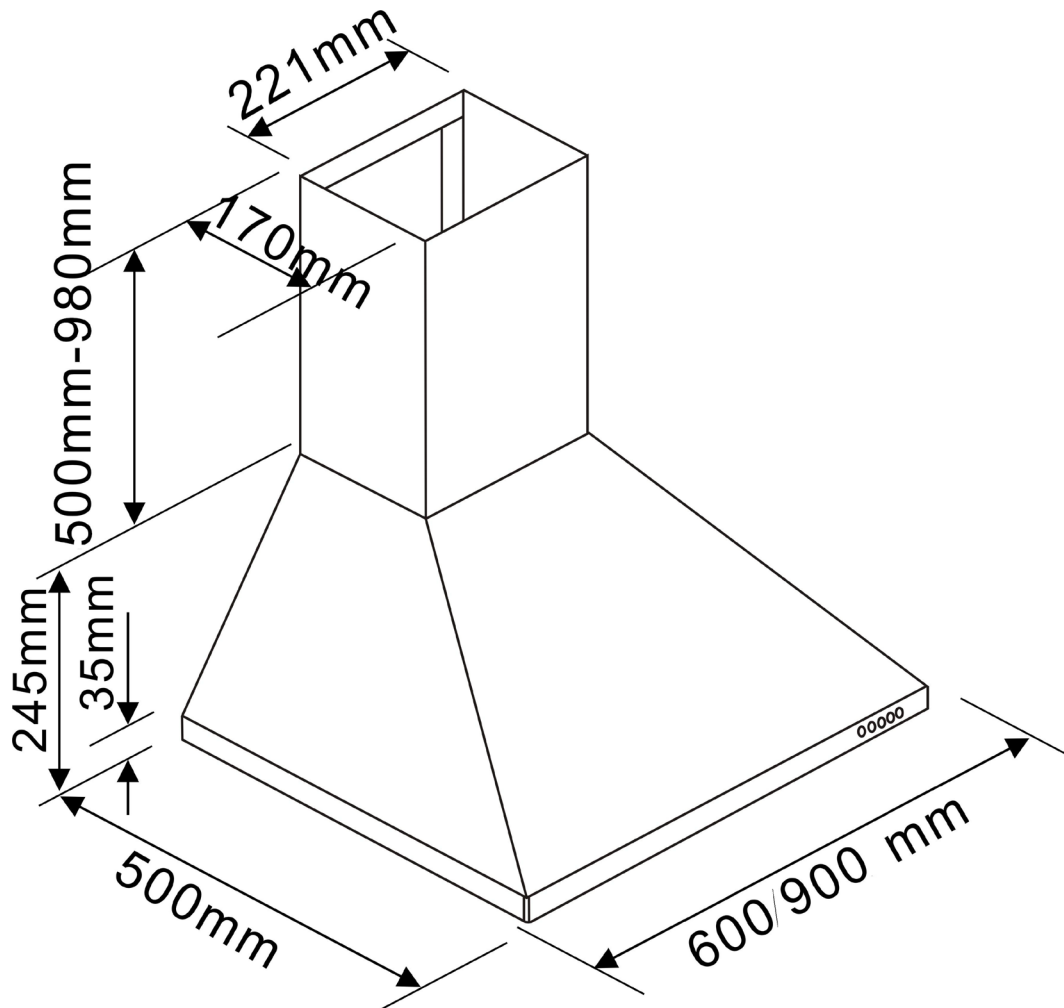
- A. To protect the main body from corrosion over a long period of time, the cooker hood should be cleaned with hot water plus non corrosive detergent every two months.
- B. Please do not use abrasive detergent for it will damage the body.
- C. Keep the motor and other spare parts free from water, as this will cause damage to the appliance.
- D. Before cleaning the appliance please remember to disconnect from the power source.
- E. If fitted with active charcoal filters, the charcoal filter should not be exposed to heat.
- F. Please do not tear open the fixed bar around the active charcoal filter.
- G. If the plug or cord is damaged, please have it replaced by an authorised service centre.

(7) TROUBLESHOOTING

Fault	Cause	Solution
Light on, but motor does not work	The fan is blocked	Remove the source of the blockage
	The capacitor damaged	Replace capacitor
	The motor jammed and bearing damaged	Replace motor
	A smell coming from the motor	Replace motor
Light does not work, motor does not work	Beside the above mentioned, check the following:	
	Light damaged	Replace lights
	Power cord loose	Take to authorised service centre.
Oil leakage	One way valve and the air ventilation entrance are not tightly sealed	Take down the one way valve and seal with silicon rubber.
	Leakage from the connection of U-shaped section and cover	Take U-shaped section down and seal with silicon or paint
Shake of the body	The fan is damaged and causes shaking	Replace the fan
	The motor is not tightly mounted	Lock the motor mounts tightly
	The body is not tightly hung on wall	Fix the body tightly
Insufficient suction	The distance between the body and the gas top too long	Readjust the distance
	Too much ventilation or breeze from open doors or windows	Choose a better location and re-assemble the machine
The machine inclines	The fixing screw not tight enough	Tighten the hanging screw and make it horizontal
	The hanging screw not tight enough	Tighten the hanging screw and make it horizontal

(8) SPECIFICATIONS

Rated Input	220V-240V, 50Hz
Rated Power	230W
Lighting Power	20W X 2 (halogen capsule lamp)
Motor Power	190W
Air tube diameter	150MM
Air output	
ORW9XA	730m ³ /h
ORW6XA	705m ³ /h





AUSTRALIAN & NEW ZEALAND PRODUCT WARRANTY STATEMENT OF STANDARD WARRANTY CONDITIONS

AUSTRALIAN CUSTOMERS

Our goods come with guarantees that cannot be excluded under the Australian Consumer Law. You are entitled to a replacement or refund for a major failure and for compensation for any other reasonably foreseeable loss or damage. You are also entitled to have the goods repaired or replaced if the goods fail to be of acceptable quality and the failure does not amount to a major failure.

NEW ZEALAND CUSTOMERS

Nothing herein contained shall be construed in any way as excluding or limiting your rights under the Consumer Guarantee Act 1993.
OUR WARRANTY

This product is also covered by the manufacturer's warranty set out in this document (Our Warranty).

Our Warranty is for a period of twenty four (24) months from the date of purchase and for refrigeration appliances will have an additional thirty six (36) months after the first twenty four (24) months on the Sealed System (PARTS only) Compressor & condenser etc. The labour cost to replace these parts is the responsibility of the customer.

This is in addition to (and does not exclude, restrict or modify) any rights or remedies to which you may already be entitled to under the Australian consumer law or the New Zealand Consumer Guarantee act 1993 relating to this product.

Our warranty (which is subject to the conditions below) covers rectification free of charge of any fault arising from defective materials or components, or faulty workmanship. The product will be repaired or replaced at the option of Omega, and all costs of installation, removal, cartage, freight travelling and insurance are to be paid by the customer.

Our warranty is subject to the following conditions:

1. That the purchaser contact Omega prior to any product repair.
2. That the purchaser carefully follows all instructions provided with the product and complies with all relevant electrical & plumbing regulations in their State when installing the product.
3. That the purchaser carefully follows the instructions provided in the owner's handbook relating to the proper use and care of the product and does not use the product for any purpose other than the DOMESTIC use for which it has been designed. If the appliance is used in commercial applications or for rental purposes, Our Warranty is limited to a warranty of Twelve (12) months covering all parts with Three (3) months on any labour cost of service or repair.

SERVICE AREA

The provision of service under Our Warranty is limited by the boundary / territory area of the nearest service centre. Travelling cost incurred for service outside this area is not covered by Our Warranty and service will incur commercial cost to be paid by the customer regulated by the number of kilometres travelled beyond the service area. These costs will be disclosed to you for acceptance by you prior to your claim being processed.

Microwave ovens must be returned to your nearest Authorised Service Centre for repair as they are a carry in serviceable appliance.

WHAT IS COVERED: By Our Warranty

During the warranty period, Omega or its authorised Service Centre will, at no extra charge, if your appliance is readily accessible without the need of special equipment and subject to the terms and conditions of this warranty, repair or replace any parts which it considers defective.

WHAT IS NOT COVERED: By Our Warranty

1. Products installed damaged or incomplete or not in compliance with the relevant electrical & plumbing regulations in their State.
2. Normal wear and tear e.g. cleaning, light globes, filters etc.
3. Failure resulting from power surges and electrical storms.
4. Insect or vermin infestation.
5. Unauthorised repairs or use of non- genuine Omega parts.
6. Any failure caused by the product not being used in accordance with the instruction and the installation manual provided with the product.
7. Misuse or abuse, including failure to properly maintain or service.
8. The clearing of blockages in pumps and hoses.
9. Damage which occurs during delivery or installation.
10. Claims to product surface coating due to liquid or solid spill-overs, accidental damage or damage caused from cleaning products not recommended by Omega.

HOW TO CLAIM OUR WARRANTY

You will need to contact Omega in Australia or New Zealand by using the contact details below.

IN AUSTRALIA

Omega is a division of Shriro Australia Pty Ltd
ABN 28 002 386 129

Head office: 104 Vanessa Street, Kingsgrove NSW 2208.

Phone: (02) 9415 5000.

Customer care: 1300 739 033.

Web: www.omegappliances.com.au

Note: Please complete the following details when you have unpacked the product:

IN NEW ZEALAND

Omega is a division of Monaco Corporation
(Member of Shriro Australia Pty Ltd)

Address: 231 Bush road, Albany, North Shore City,
Auckland, New Zealand 0632.

Phone: (09) 415 6000.

Email: service@shriro.com.au

Model No.....

Serial No.....

Date of Purchase.....

Retailer.....