

TOP LOAD WASHER

CHiQ

WTL65W

WHITE

CAPACITY

6.5KG

TUB VOLUME

56L

SPIN SPEED

700 RPM

ENERGY RATING

2 star

WIDTH

550 mm

HEIGHT

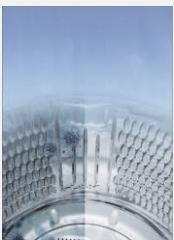
920 mm

DEPTH

588 mm

WELS RATING

3 star



DRUM CLEAN

You can clean the washing machine drum from time to time to keep the machine free from bacteria.



ONE TOUCH

With one touch of the "Smart clean" Button, the washing process will be completed automatically.



WATERFALL FLOW

3D water flow, supports twist and tangle free! Perfect balance between Washing performance and care of clothes.

SPECIFICATIONS

ChiQ Model	WTL65W	-----	-----
Total capacity	6.5 kg	Supply	
Maximum spin speed	700 RPM	Installation type	Free standing base
MEPS (star)	2	Voltage (V)	220-240
WELS (star)	3	Frequency (Hz)	50
Cabinet Colour	White	Rated input power (Watt)	525
Display Colour	Black	Water inlets	Cold-hot
Product Dimensions (WxHxD) mm	550 x 920 x 588	Water inlets position	From back
Packing Dimensions (WxHxD) mm	626 x 1005 x 641	Water inlet pipe length (m)	1.5 m
Net Weight (kg)	33	Water drain pipe length (m)	2.2 m
Gross Weight (kg)	37.5	Power cord length (m)	1.8 m
Display	7-segment (88)		
Tub / Drum material	Plastic / Stainless steel		
Top lid	Folding ABS+Glass		
Control Type	Digital		
Tub dimensions(mm)	Φ452		
EAN Code	TBC		

FEATURES

One Touch smart program
Delay start
Child lock
Fuzzy logic function
Failure detection system
Drain pump with filter

Warranty

Washing Machine	3 years
Motor	10 years parts warranty (* 3 Years parts & labour + 7 years on Motor - parts only).

WASHING PROGRAM

Number of programs	8
Daily	Yes
Cotton	Yes
Quick Wash	Yes
Bedding	Yes
Gentle	Yes
Heavy Duty	Yes
Spin Only	Yes
Tub Clean	Yes