

LED GLOW FLOOR MATS

WP ITM. FL533477

**Important, retain for future reference:
Read carefully**



PACKAGE CONTENTS



2 x LED Glow Floor Mat



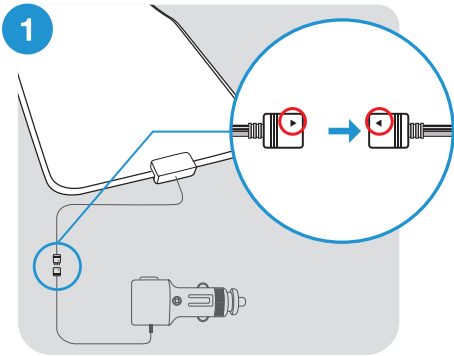
1 x 24" 12V Power Adapter
with 1-to-2 Splitter Cable

TECHNICAL SPECIFICATIONS

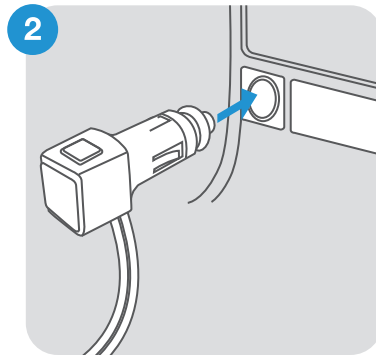
Operating Voltage	DC 12V System Only
Maximum Power Consumption	2.9W

POWER

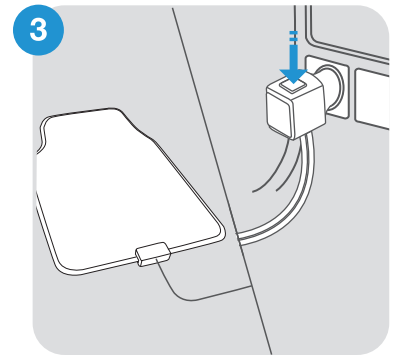
Option A – Connecting To 12V Power



Connect your LED Glow Floor Mats to the included 12V Power Adapter. Lights will ONLY work when power arrows on the 4 pin connectors are aligned as illustrated.

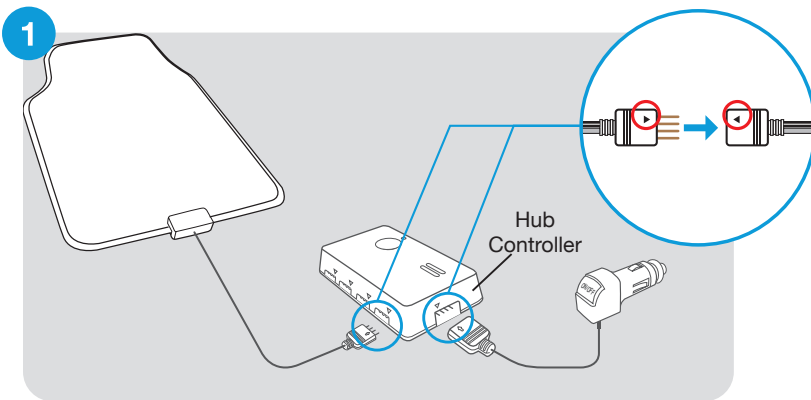


Plug the adapter into a 12V DC outlet.



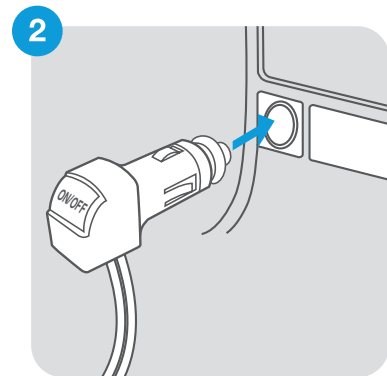
Toggle the button on the adapter to switch between 15 accent light colors. Hold the button for 3 seconds to switch off.

Option B – Connecting To Smart Hub (Sold Separately)



Connect your LED Glow Floor Mats to the Smart Hub (sold separately) then to the 12V Power Adapter. Lights will ONLY work when power arrows on the 4 pin connectors are aligned as illustrated.

CAUTION: It is recommended to use the power adapter that comes with your Smart Hub in order for the Floor Mats to function properly.



Plug the adapter into a 12V DC outlet.

Upon successful connection, choose from up to 49 synced accent light colors in the Type S LED App.

WARNINGS

Important Safety Instructions:

1. SAVE THESE INSTRUCTIONS – This manual contains important safety and operating instructions for LED Glow Floor Mats model FL533477.
2. Before using the LED Glow Floor Mats, read all instructions and cautionary markings to ensure the product is properly and safely installed.
3. Do not expose LED Glow Floor Mats to rain, moisture, or snow.
4. Use of an attachment not recommended or sold by the LED Glow Floor Mats manufacturer may result in a risk of fire, electric shock, or injury to persons.
5. To reduce risk of damage to cigarette lighter connector and cord, pull by cigarette lighter connector rather than cord when disconnecting LED Glow Floor Mats.
6. Make sure cord is located so that it will not be stepped on, tripped over, or otherwise subjected to damage or stress.
7. Do not operate with damaged cord or cigarette lighter connector – replace it immediately.
8. Do not operate LED Glow Floor Mats if they have received a sharp blow, been dropped, or otherwise damaged in any way; take them to a qualified serviceperson.
9. To reduce risk of electric shock, disconnect all power before attempting any maintenance or cleaning. Turning off the lights will not reduce this risk.

WARNING: Do not install or use product if it, in any way, impairs the safe operation of your vehicle. Follow manufacturer's instructions to ensure the product is properly and safely installed. Neither the manufacturer nor the reseller can be held responsible or liable for consequential, incidental, or indirect damages to either person or property resulting from the installation or improper use of this product. Check your state, provincial, or local laws before installing. This product is not DOT approved.

FCC COMPLIANCE STATEMENT

This device complies with Part 15 of the FCC rules. Operation is subject to the following two conditions:

1. This device may not cause harmful interference, and
2. This device must accept any interference received, including interference that may cause undesired operation.

WARNING: Changes or modifications to this unit not expressly approved by the party responsible for compliance could void the user's authority to operate the equipment. The manufacturer is not responsible for any radio or TV interference caused by unauthorized modifications or change to this equipment. Such modifications or change could void the user's authority to operate the equipment.

NOTE: This equipment has been tested and found to comply with the limits for a Class B digital device, pursuant to part 15 of the FCC Rules. These limits are designed to provide reasonable protection against harmful interference in a residential installation. This equipment generates, uses and can radiate radio frequency energy and, if not installed and used in accordance with the instructions, may cause harmful interference to radio communications. However, there is no guarantee that interference will not occur in a particular installation. If this equipment does cause harmful interference to radio or television reception, which can be determined by turning the equipment off and on, the user is encouraged to try to correct the interference by one or more of the following measures:

- Reorient or relocate the receiving antenna.
- Increase the separation between the equipment and the receiver.
- Connect the equipment into an outlet on a circuit different from that to which the receiver is connected.
- Consult the dealer or an experienced radio/TV technician for help.

WARNING: This product can expose you to chemicals including Di(2-ethylhexyl)phthalate (DEHP) and Diisononyl phthalate (DINP), which are known to the State of California to cause cancer and birth defects or other reproductive harm. For more information go to www.P65Warnings.ca.gov.

LED GLOW FLOOR MATS

Model: FL533477

Responsible Party:

TYPE S

2975 Red Hill Ave., Ste. 100, Costa Mesa, CA 92626

Tel: 1-866-294-9244

TOURING ITEMS®
TYPES

A Horizon Brands Company

2975 Red Hill Ave., Ste. 100,

Costa Mesa, CA 92626, U.S.A.

1.866.294.9244 | info@typesauto.com

© 2023 TYPE S. All rights reserved.

www.typesauto.com

ML-533477_V1