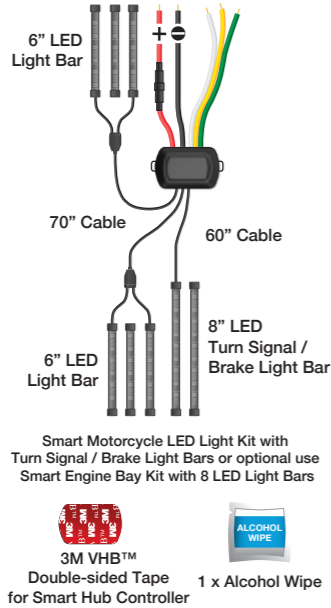


SMART MOTORCYCLE /
ENGINE BAY LED KIT
HIGH TEMPERATURE RESISTANT



Instruction Manual

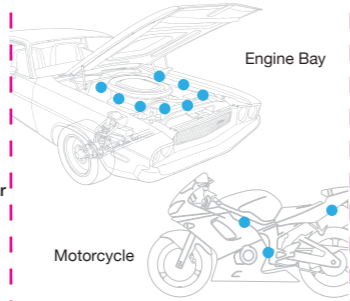
PACKAGE CONTENTS



TECHNICAL SPECIFICATION

Working voltage: DC 12V Only
Maximum amperage draw: 1A at 12V

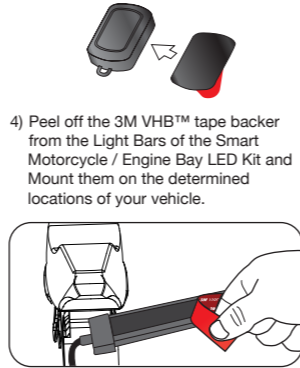
INSTALLATION



- 1) Choose your desired location. (see suggestions above)
- 2) Clean surface thoroughly with isopropyl alcohol. Dry completely.

INSTALLATION CONT...

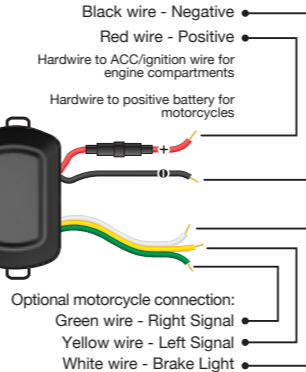
3) Determine the location of the Light Bars and the Smart Hub Controller. Route the power cables inside the vehicle and secure the Smart Hub Controller using the provided 3M VHB™ double sided tape. Make sure to avoid placing the Smart Hub Controller or cables near any extremely HOT location or next to the engine. Connect hardwire cables to the vehicle's battery.



4) Peel off the 3M VHB™ tape backer from the Light Bars of the Smart Motorcycle / Engine Bay LED Kit and Mount them on the determined locations of your vehicle.

POWER

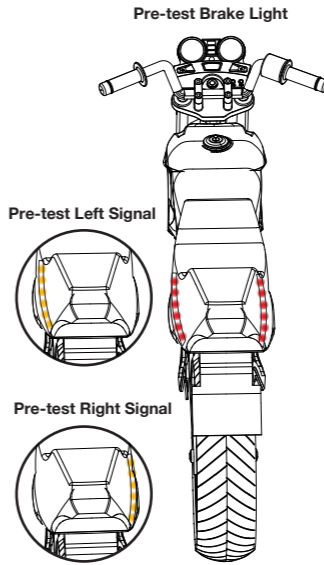
Hardwire the Smart Motorcycle / Engine Bay LED Kit to your vehicle's power source according to color code below for wire identification. Pre-test the Left Signal Light / Right Signal Light / Brake Light to ensure the wires are connected correctly.



Optional motorcycle connection:
Green wire - Right Signal
Yellow wire - Left Signal
White wire - Brake Light

NOTE: Refer to your vehicle's service manual for a wire schematic for correct wire placement or you can test the power sources using a multi-meter.

POWER CONT...



APP INSTALLATION



Compatible with iPhone 4s & higher, iPad5, iPad Mini, iPad Air & higher, and iPod touch 5th Generation & higher. Requires iOS 7.0 or higher.

Note: not all Android™ phones are equipped with Bluetooth™ v4.0 required for this application.

• Install Type S LED APP on your smart device. Search for the APP through the APP Store or Google Play by:



- Or scan above QR code to find the compatible APP for iOS or Android.
- Once installed, open the APP and begin enjoying your Plug & Glow™ experience.

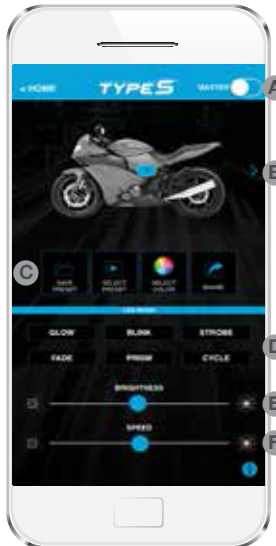
USING THE APP



Tap "Smart Dome / Motorcycle Engine Bay" Icon to start.

APP will automatically pair to the Hub when both are powered on (including Bluetooth) and within 30ft.

USING THE APP CONT...



A Master On/Off Switch

B LED Zone Functions:

Connect and control up to four separate zones.

On/Off: Press each zone icon to turn LED On or Off.

Move Zone Icon:

Press and hold zone icon, select "Move" to position each zone icon at your desired location.

Rename Zone Icon:

Press and hold zone icon, select "Rename" to rename each icon. (Note: Maximum 4 characters).

Select Multiple:

You can select multiple zones and control the same setting at once. Press and hold zone icon, select "Select Multiple" then select your desired zone by pressing "Confirm". To ungroup your selection, press and hold zone icon and select "Ungroup".

Select Vehicle Schematic:

Press>, select your desired vehicle schematic.

C Save Preset:

You can save your favorite settings. After creating your setting, press "Save Preset" and enter your preset name. You can save up to 10 preset settings.

Select Preset:

You can select your previously saved preset setting, press "Select Preset" and choose your saved setting.

Delete Saved Preset Setting:

To delete a saved preset setting, press "Select Preset" and press and hold the preset setting that you wish to delete. Press "Yes" to delete.

Select Color:

Choose from up to 49 different colors. Press "Select Color", select your desired color and press "Confirm".

D LED Mode:

Choose from 6 different modes

E Brightness:

Slide bar to adjust brightness setting

F Speed:

Slide bar to adjust the speed of the movement from each LED Mode.

WARNING

IMPORTANT SAFETY INSTRUCTIONS

1. SAVE THESE INSTRUCTIONS - This manual contains important safety and operating instructions for LED kit Model LM57363.

2. Before using this LED kit, read all instructions and cautionary markings .

3. Use of an attachment not recommended or sold by the battery LED kit manufacturer may result in a risk of fire, electric shock, or injury to persons.

4. Do not operate with damaged cord - replace it immediately.

5. Do not operate LED kit if it has received a sharp blow, been dropped, or otherwise damaged in any way; take it to a qualified serviceperson.

6. Do not disassemble LED kit; take it to a qualified serviceperson when service or repair is required. Incorrect reassembly may result in a risk of electric shock or fire.

Smart Motorcycle / Engine Bay LED Kit LM57363
Responsible Party:
Winplus North America Inc.
2975 Red Hill Ave., Ste. 100, Costa Mesa, CA 92626, USA
Tel: 1-866-294-9244

FCC / IC Compliance Statement:

This device complies with Part 15 of the FCC rules and Industry Canada. Operation is subject to the following two conditions:

- (1) This device may not cause harmful interference, and
- (2) this device must accept any interference received, including interference that may cause undesired operation.

Warning: Changes or modifications to this unit not expressly approved by the party responsible for compliance could void the user's authority to operate the equipment. The manufacturer is not responsible for any radio or TV interference caused by unauthorized modifications or change to this equipment. Such modifications or change could void the user's authority to operate the equipment.

NOTE: This equipment has been tested and found to comply with the limits for Class B digital device, pursuant to part 15 of the FCC Rules. These limits are designed to provide reasonable protection against harmful interference in a residential installation. This equipment generates, uses and can radiate radio frequency energy and, if not installed and used in accordance with the instructions, may cause harmful interference to radio or television reception, which can be determined by turning the equipment off and on, the user is encouraged to try to correct the interference by one or more of the following measures:

- Reorient or relocate the receiving antenna.
- Increase the separation between the equipment and the receiver.
- Connect the equipment into an outlet on a circuit different from that to which the receiver is connected.

• Consult the dealer or an experienced radio/TV technician for help.

The device has been evaluated to meet general RF exposure requirement.

To maintain compliance with FCC/IC's RF exposure guidelines, this equipment should be installed and operated with a minimum distance of 20cm between the radiator and your body.

CAN ICES-005 (B) / NMB-005 (B)

WARNING: This product can expose you to chemicals including DEHP and DINP, which are known to the State of California to cause cancer and birth defects or other reproductive harm. For more information go to www.P65Warnings.ca.gov.

Have a comment or question?
Email us at: info@typesauto.com
or visit us online at: www.typesauto.com

Winplus North America, Inc.
2975 Red Hill Ave., Ste. 100,
Costa Mesa, CA 92626
Tel: 1.866.294.9244

© 2019 Winplus North America, Inc.
All rights reserved.
3M VHB™ is a trademark of 3M Company.

The Bluetooth® word mark and logos are registered trademarks owned by the Bluetooth SIG, Inc. and any use of such marks by Winplus Co. Ltd is under license. Other trademarks and trade names are those of their respective owners.

iPhone, iPad and iPod touch are trademarks of Apple Inc.

Android is a trademark of Google Inc.

OPTIONAL PRODUCTS

Optional Smart LED products also available to enhance your experience (sold separately).



48" Smart Lighting Deluxe Kit (LM55369)



72" Exterior Smart Lighting Kit (LM55878)