

PACKAGE CONTENTS

TECHNICAL SPECIFICATION

INSTALLATION

APP INSTALLATION

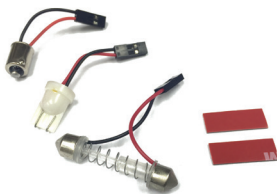
USING THE APP

USING THE APP Cont..

**Plug & Glow™
Dome Lighting
Smart Dome LED Kit**



**Smart Multi-Color
Dome Light**



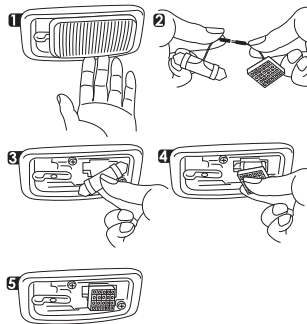
**Universal Dome
Light Adaptor**

Instruction Manual

Working voltage: DC 12V Only
Bluetooth distance: No obstacle 30ft
Frequency band: 2.4GHZ
Types of LED: 5050 SMD RGB
Control up to: 4 Dome Lights

Fits the following bulb sizes:

- 560, 561, 578, 211-2, 212-2, 214-2, 6411, 6451, 6429, 6413, 6418, DE3423, 6461, 6423, DE3021, DE3022, DE3175, 921, 194, 168



1. Remove light cover
2. Select the appropriate replacement adaptor
3. Attach LED light to the adaptor and install adaptor into light slot
4. Turn on light to confirm correct orientation; if light does not come on reverse adaptor orientation.
5. Apply the adhesive to hold lights in place and replace cover.

Download on the App Store
GET IT ON Google Play

Scan to download APP

Compatible with iPhone 4s & higher, iPad3, iPad Mini, iPad Air & higher, and iPod touch 5th Generation & higher. Requires iOS 7.0 or higher.

Compatible with phones with Android™ 4.3 or higher. Note: not all Android™ phones are equipped with Bluetooth™ v4.0 required for this application.

- Install Smart Lighting APP on your Smart phone. Scan above QR code to find the compatible APP for iOS or Android.
- Or you can search for the APP through the APP Store or Google Play by:

TYPE S LED

- Once installed, open the APP and begin enjoying your Plug & Glow™ experience.



Tap "Smart Dome / Motorcycle Engine Bay" icon to start. APP will automatically pair to the Hub when both are powered on (including Bluetooth) and within 30ft.



- Reorient or relocate the receiving antenna.
- Increase the separation between the equipment and the receiver.
- Connect the equipment into an outlet on a circuit different from that to which the receiver is connected.
- Consult the dealer or an experienced radio/TV technician for help.

The device has been evaluated to meet general RF exposure requirement. To maintain compliance with FCC/IC's RF exposure guidelines, this equipment should be installed and operated with a minimum distance of 20cm between the radiator and your body.

CAN ICES-005 (B) / NMB-005 (B)

The Bluetooth® word mark and logos are registered trademarks owned by the Bluetooth SIG, Inc. and any use of such marks by Winplus Co. Ltd is under license. Other trademarks and trade names are those of their respective owners.

iPhone, iPad and iPod touch are trademarks of Apple Inc. Android is a trademark of Google Inc.

Plug & Glow™ Dome Lighting
Smart Dome LED Kit
LM55258
Responsible Party:
Winplus North America Inc.
2975 Red Hill Ave., Ste. 100, Costa Mesa, CA 92626, USA
Tel: 1-866-294-9244

FCC / IC Compliance Statement:

This device complies with Part 15 of the FCC rules and Industry Canada. Operation is subject to the following two conditions:
(1) This device may not cause harmful interference, and
(2) this device must accept any interference received, including interference that may cause undesired operation.

Warning: Changes or modifications to this unit not expressly approved by the party responsible for compliance could void the user's authority to operate the equipment. The manufacturer is not responsible for any radio or TV interference caused by unauthorized modifications or change to this equipment. Such modifications or change could void the user's authority to operate the equipment.

NOTE: This equipment has been tested and found to comply with the limits for Class B digital device, pursuant to part 15 of the FCC Rules. These limits are designed to provide reasonable protection against harmful interference in a residential installation. This equipment generates, uses and can radiate radio frequency energy and, if not installed and used in accordance with the instructions, may cause harmful interference to radio or television reception, which can be determined by turning the equipment off and on, the user is encouraged to try to correct the interference by one or more of the following measures:

A Master On/Off Switch

B LED Zone Functions:

Connect and control up to four separate dome lights.

On/Off: Press each zone icon to turn LED On or Off.

Move Zone Icon:

Press and hold zone icon, select "Move" to position each zone icon at your desired location.

Rename Zone Icon:

Press and hold zone icon, select "Rename" to rename each icon. (Note: Maximum 4 characters).

Select Multiple:

You can select multiple zones and control the same setting at once. Press and hold zone icon, select "Select Multiple" then select your desired zone by pressing "Confirm". To ungroup your selection, press and hold zone icon and select "Ungroup".

Select Vehicle Schematic:

Press >, select your desired vehicle schematic.

C Save Preset:

You can save your favorite settings. After creating your setting, press "Save Preset" and enter your preset name. You can save up to 10 preset settings.

Select Preset:

You can select your previously saved preset setting, press "Select Preset" and choose your saved setting.

Delete Saved Preset Setting:

To delete a saved preset setting, press "Select Preset" and press and hold the preset setting that you wish to delete. Press "Yes" to delete.

Select Color:

Choose from up to 49 different colors. Press "Select Color", select your desired color and press "Confirm".

D Brightness:

Slide bar to adjust brightness setting

E LED Mode:

Choose from 6 different modes

F Speed:

Slide bar to adjust the speed of the movement from each LED Mode.

EXTENDABLE

Type S Plug & Glow™ Smart Multi-Color Dome Light can be extended up to 4 separate Dome Lights.



WARNING

- WARNINGS:**
1. Do not install or use product if it, in any way, impairs the safe operation of your vehicle.
 2. NEVER use the APP while operating your vehicle. Use the APP when vehicle is stationary only.
 3. Follow manufacturer's instructions to ensure the product is properly & safely installed.
 4. Check your state or provincial laws before installing. Vehicle owner must comply with all applicable laws.
 5. This product is intended solely for decorative purposes. Manufacturer and Seller assume no liability for installation or use, which are solely the responsibility of the purchaser.
 6. This product is not DOT approved and is designed and intended for interior uses only. Not for use in extreme temperature such as under hood applications.
 7. The Manufacturer and Seller are not responsible or liable for consequential, incidental, or indirect damages, whether to person or property, resulting from the installation or improper use of this product.

⚠ WARNING: This product can expose you to chemicals including DEHP and DINP, which are known to the State of California to cause cancer and birth defects or other reproductive harm. For more information go to www.P65Warnings.ca.gov.

Have a comment or question?
Email us at: info@typesauto.com or visit us online at: www.typesauto.com

Winplus North America, Inc.
2975 Red Hill Ave., Ste. 100,
Costa Mesa, CA 92626
Tel: 1.866.294.9244
© 2019 Winplus North America, Inc.
All rights reserved.
3M™ is a trademark of 3M Company.

OPTIONAL PRODUCTS

Optional Smart LED products also available to enhance your experience (sold separately).



48" Smart Lighting Deluxe Kit (LM55369)



72" Exterior Smart Lighting Kit (LM55878)