

FLATBED UV-LED PRINTER

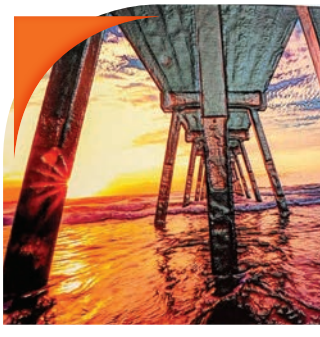
XpertJet 461 UF



The XpertJet 461UF, compact UV-LED flatbed printer offers many new features including a new sleek modern design, larger printable surface area, a larger window for safe viewing, an updated touch-screen panel, an improved LED lamp, optional vacuum table providing the ability for increased printing depth and more. These enhancements along with the improved ease of use and easier maintenance will increase both productivity and profitability. The Mutoh XPJ-461UF allows for finer texture layers which instantly adds value to any print. Tie that in with Mutoh's "Local Dimming Control Technology", you now have the ability to add high glossy finishes easily in one pass! The Mutoh XPJ-461UF is a great addition to your arsenal and will definitely add profits to your business!



GLOSSY & MATTE VARNISH



RICH TEXTURES



VARIABLE PRINTING



BRILLE

MUTOH
MAKES IT POSSIBLE

LDC
UV LED LOCAL DIMMING CONTROL

UV-LED Lamp
Local Dimming
Control Technology

Upgraded LED
Touch Panel

Optional
Vacuum Table

Removable Table

Expanded
Opening Space

1-800-99MUTOH
www.MUTOH.com

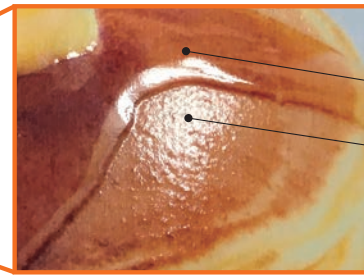
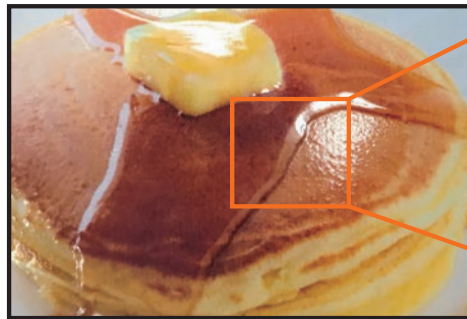


Mutoh's Unique UV-LED Lamp Local Dimming Control Technology

The UV-LED local dimming control* technology produces various rich texture expression. It provides glossy, semi-glossy, and matte varnish printing simultaneously with colors and/or white printing with a single table movement.

*local dimming=segment control

UV-LED Lamp Local Dimming Control Technology



Even if varnish is simultaneously printed with colors and/or white with single table movement, glossy and matte varnish can be expressed.

NEW UV-LED LAMP + UV-LED Lamp Local Dimming Control Technology

Mounted from XPJ Series

Shortens printing time and improves productivity. Reduces grain, banding and layer printing misalignment.

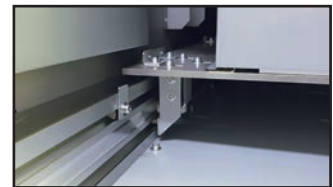
Newly Designed Mechanism Ensures Excellent User Experience

TABLE MECHANISM FOR USER FRIENDLINESS



Print onto objects up to 2.76" thick. Table removal allows printing onto objects up to 5.91" thick. Optional vacuum table available.

PRECISE RAIL MECHANISM



High precision rails on both sides keep the table horizontal and provide consistent print quality.

LED Touch Panel

LED touch panel provides high quality display and improves panel operation.

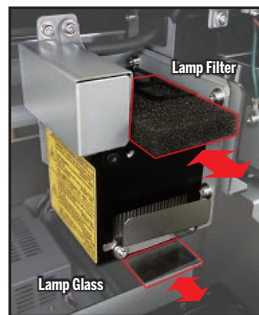
Print Resume Function

Ability to pause and resume print function.

Partial Nozzle Block Activation

Printing can be performed temporarily using only active nozzle blocks if nozzles are clogged.

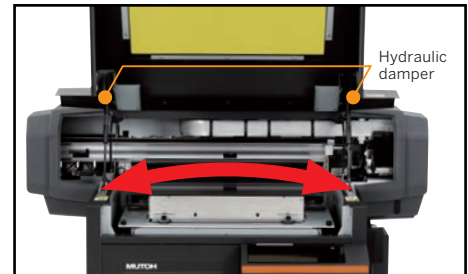
Improved Maintenance



Redesigned area around UV-LED Lamp makes for easier access for maintenance.

New removable/replaceable UV lamp filter makes for easier cleaning.

EXPANDED OPENING SPACE



Newly designed front cover with hydraulic damper ensures safety and improves ease of operation. Expanded opening space for ease of use and maintenance.

XPJET 461UF SPECIFICATIONS

Printing Systems	On-demand piezo drive system		Print Resolution	1440 / 1080 / 720 dpi (Total 3 modes)
Set Media	Size (WxD)	19.02 in x 12.95 in	Interface	Ethernet (10BASE-T / 100 BASE-TX)
	Height	up to 2.76 in (with standard table) up to 5.9 in (w/o standard table)	Power Requirements	AC 100-120V± 10%, 50/60Hz ± 1Hz
		up to 2.76 in (with optional vacuum table)	Operation Noise	Standby: 51dB or less Printing with standard table: 63dB or less
Weight	up to 11.02 lbs. (w/standard table) up to 17.64 lbs. (w/o standard table)	Printing with optional vacuum table: 70dB or less	Printable Environment	Temperature: 68-89.6 °F Humidity: 40-60%RH (non condensing)
	up to 8.82 lbs. (with optional vacuum table)	Power Consumption	Sleep Mode: 20W or less Ready to Print: 40W or less Operation: 195W or less	
Max Printable Size (WxD)	19.02 in x 12.95 in		Dimensions (WxDxH) Weight	46.77 in x 38.27 in x 23.50 in (cover closed) weight: 209.44 lbs.
Height Adjustment	PG handle (handle 0.059 in / round)			46.77 in x 38.27 in x 39.80 in (front cover opened)
Ink	Type	UV-LED Ink (UH21 ink / US 11 ink)		46.77x 40.35x 23.50 in (PG handle cover opened)
	Ink Set	4 colors (C, M, Y, K) 6 colors (C, M, Y, K, White, Varnish)	Printer Driver	Bundled
	Capacity	220ml ink cartridge (CMYK, White, Varnish)	RIP Software	SAi FlexiSIGN & PRINT MUTOH Edition
	No. of slots	6		
Vacuum Table	Optional			