



## Super Strong Aromatic CBD Balm/Salve

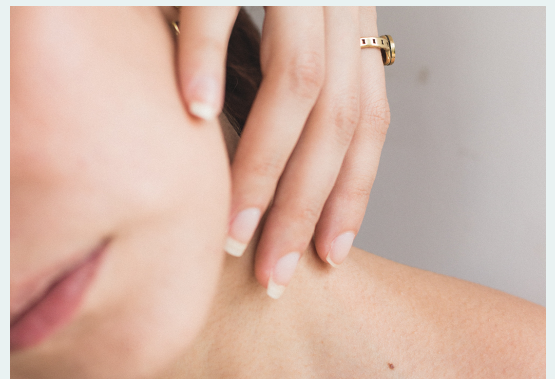
Here at GreenSome, we have spent considerable time and effort creating a product to help and support your skin's wellbeing with the power of CBD. @The Greensome's line of CBD topicals is specially formulated to penetrate the skin and provide localised support and help for your body recover from whatever may be hurting it. The Aromatic Balm uses a non-hazardous extraction process that results in a chemical-free product with negligible THC levels, GMO-free and sulphate-free. We've curated only the finest ingredients to help with many uses customarily associated with CBD Balm and combined the CBD with other components to create a multi-purpose, CBD-rich skin balm.

Current arthritis and related condition treatments often have side-effects attributable to active compounds and the route of administration. Cannabidiol (CBD) attenuates inflammation and pain without side-effects, but CBD is hydrophobic and has poor oral bioavailability. Topical drug application avoids gastrointestinal administration, first pass metabolism, providing more constant plasma levels.

Recent studies have shown that topical CBD application has therapeutic potential for relief of arthritis, sciatica and many other related pain-related behaviours and inflammation without evident side-effects.

The other organic essential oils we have added to the balm base have additional skin softening and soothing actions to ease dry, chapped areas. Applying a topical joint cream or gel after a warm bath or shower or after exertion helps it sink in quickly.

- A 100% natural hemp-derived cannabis ointment
- A soothing, relaxing balm that works perfectly for light or deep rub.
- As soon as you start rubbing it into the skin, it will feel more like a salve showing all the signs of being absorbed into the skin.
- Fast-acting, long-lasting benefits
- Sum of Cannabinoids 10% or over 1400 mg in the 20ml option & 2000 mg in the 30ml option
- Other ingredients include; Comfrey Oil, Essential Oils, Clove Bud, White Willow Salix Alba The tincture, BioMatrix Licorice Root Extract



Made with high-quality full-spectrum hemp-derived CBD by @The Greensome Ltd

### FDA/EMA DISCLOSURE

This product is not for use by or sale to persons under the age of 18. This product should be used only as directed on the label. It should not be used if you are pregnant or nursing unless you have consulted your physician. Also, please do ask if you have a serious medical condition or use prescription medications. A Doctor's advice should be sought before using this and any supplemental dietary product. All trademarks and copyrights are the property of their respective owners and are not affiliated with, nor do they endorse this product. These statements have not been evaluated by the FDA or EMA, or the official Medicines Agency for your country. This product is not intended to diagnose, treat, cure or prevent any disease because it lacks sufficient scientific proof to validate the potential benefits. The ingredients in this product are organically produced and are individually legal to use.

If you have a severe allergic reaction to any ingredients, please do not apply. The combination of the ingredients used in the product has enhanced capabilities; please let us know if they help your condition.

## INGREDIENTS

- Full-Spectrum Hemp Extract with CBD Content 2000mg
- Coconut Oil (Extra Virgin, Organic),
- Rapeseed Oil
- Hemp Cannabinoid Extract (Full Spectrum)
- Beeswax
- Comfrey Oil (Comfrey Root, Comfrey Leaf, Propyl Gallate,
- Chlorophyll)
- Tea-Tree oil
- Liquorice Root Extract
- BioMatrix Licorice Root Extract: With Vegetable Glycerin, Purified Water  
Lavender, Eucalyptus, Peppermint Essential Oils
- White Willow Salix Alba The tincture is an extract made with 25% v/v organically produced pure grain alcohol.
- Essential Oils (100% pure), Sweet orange, lemonGrass, Bergamot
- Rosemary, Lavender, Eucalyptus, Peppermint
- Clove Bud (Syzygium Aromaticum)



Subject of determination	Method	Result	Unit
CBD	PB-CL-1:2019 issue.3 from 26.08.2020/HPLC/NA	4.68	%(m/m)
CBDa	PB-CL-1:2019 issue.3 from 26.08.2020/HPLC/NA	<0.01	%(m/m)
delta-9-THC	PB-CL-1:2019 issue.3 from 26.08.2020/HPLC/NA	<0.01	%(m/m)
delta-9-THCA	PB-CL-1:2019 issue.3 from 26.08.2020/HPLC/NA	<0.01	%(m/m)
CBC	PB-CL-1:2019 issue.3 from 26.08.2020/HPLC/NA	0.02	%(m/m)
CBGA	PB-CL-1:2019 issue.3 from 26.08.2020/HPLC/NA	<0.01	%(m/m)

Subject of determination	Method	Result	Unit
CBG	PB-CL-1:2019 issue.3 from 26.08.2020/HPLC/NA	0.08	%(m/m)
CBDV	PB-CL-1:2019 issue.3 from 26.08.2020/HPLC/NA	0.52	%(m/m)
CBN	PB-CL-1:2019 issue.3 from 26.08.2020/HPLC/NA	<0.01	%(m/m)
Sum of CBD	PB-CL-1:2019 issue.3 from 26.08.2020/HPLC/NA	4.68	%(m/m)
Sum of delta-9-THC	PB-CL-1:2019 issue.3 from 26.08.2020/HPLC/NA	<0.01	%(m/m)
Sum of Cannabinoids	PB-CL-1:2019 issue.3 from 26.08.2020/HPLC/NA	5.30	%(m/m)

## MAIN BENEFITS

- Arthritis-related pain: When applied to the skin and affected area, it can significantly lower joint swelling.
- Nerve pain: The Balm can lower levels of pain, mostly due to the anti-inflammatory properties.
- It is noted to help treat eczema  
It helps to heal psoriasis reducing the pain

## CAUTION

- For External Use Only
- Avoid contact with eyes and mucous membranes
- Do not apply to open wounds
- Stop use if condition worsens, or severe skin irritation occurs
- If pregnant or breastfeeding, consult with a health professional before use

## SUGGESTED USE

Apply topically. Apply as a first or second layer on top of serum or wash with water. Massage to the desired area of the skin. It may be used on the face, neck, and all over the body for external use only. Keep out of reach of children.

If you have severe allergies to any of the components in the product, please consult your physician. It is always good to try a tiny quantity on the skin and wait for 10 minutes to see if the area shows an allergic reaction. Do not use it if you have redness or inflammation, or itchiness.