

TOPSY PRODUCTS

Custom Equipment Design & Fabrication for the Jeep Enthusiast



Jeep Wrangler JL CB Mic Mount Installation Instructions



(Product shown in red to show contrast)

This kit is designed to hold a CB microphone, 2 way radio and/or other items and mount the JL Wrangler dash without drilling any holes.

Kit Includes:

- 1 Mount Bracket (Black)**
- 1 Motorola style mic clip**
- 2 Button head screws**
- 2 nylon insert lock nuts**

Tools Needed:

- 10mm Socket**
- Automotive Pry Tool**

Installation Instructions

Installation:

Remove air control console by gently pulling straight out from dash. Let it rest below to allow access to the left mount bolt of the passenger's grab handle. Use a 10mm socket and remove the bolt.

Place the mic mount bracket in place, making sure the cutout in the mount centers over the plastic tab on the dash.

Re-install the 10mm grab handle mount bolt. Tighten to 50 in/lbs.

Reinstall air control console.

(Product shown in red to show contrast only)

Use:

This mount bracket is designed to be used in many ways.

CB Mic Clip

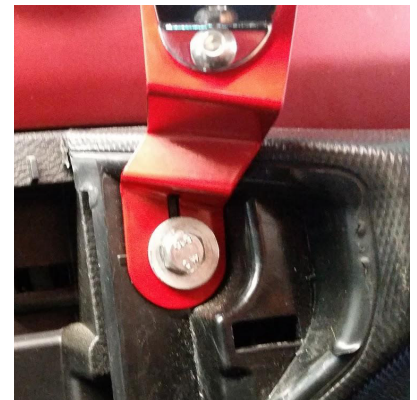
Handheld Race Radio Holder

Attachment point for:

1" swivel ball style accessory mount.

Mobile Phone Mount

GPS Mount



Cut out to fit 2 way radio

or



1/4" Ball Mount

Check out our install video at:

<http://www.TopsyProducts.com/support/videos>

or scan this QR code --->



TopsyProducts.com

Oshkosh WI 54902