

TOPSY PRODUCTS

Custom Equipment Design & Fabrication for the Jeep Enthusiast



Hoist Bracket Installation Instructions

2 Door JK & JL ONLY



This kit is designed to use a RACOR PHL-1 Hoist to remove the hardtop of a Jeep Wrangler.

Kit Includes:

- 2 Rear Hinge Brackets (1 left & 1 right)
- 2 Rear Short Hoist Straps w/ Mini Snap Hook
- 2 Front L-Brackets

Tools Needed:

10mm Socket



Installation Instructions

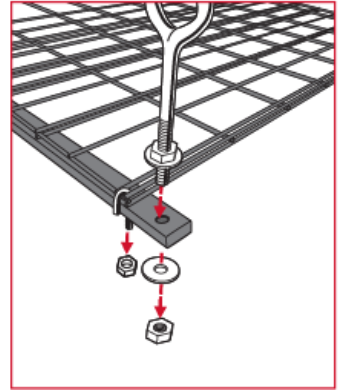
The world's simplest hard top hoist. Remove your hardtop by yourself!

Install Rear Straps on Racor® Hoist (Only work on one side at a time.)

First, make sure you have securely installed the Racor Lift according to the manufacturer's instructions. And also make sure the rectangular support bars on the movable platform are running side to side over the Jeep top, NOT front to back.

1. On the side of the RACOR® Rack that would face the rear of the Jeep, remove nut from outermost J-bolt near the eye-bolt and then remove J-bolt.
2. Next, remove bottom nut on the pulley cable eye-bolt and then remove it from platform support. (You may need an extra hand to support the platform during this step)
3. Slide one of the shorter Topsy hoist strap over platform support bar past the 2 bolt holes and in about 12 inches from the end.
4. Reinstall the cable eye-bolt and J-bolt.

Repeat steps on other side. The rear straps should sit about 34" apart.



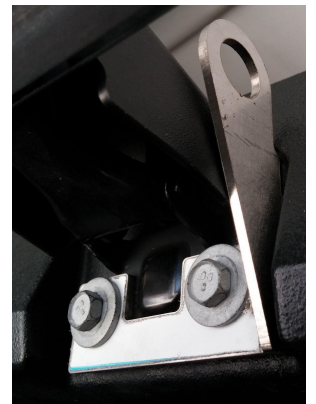
Install L-Brackets on Racor® Hoist (Only work on one side at a time.)

1. On the side of the RACOR® Rack that would face the front of the Jeep, remove bottom nut on the pulley cable eye-bolt and then remove it from platform support. (You may need an extra hand to support the platform during this step)
2. Slide one of the 2 Door L-Brackets over platform support bar with the bottom leg facing the rear to the vehicle, lining up the holes.
3. Reinstall the cable eye-bolt making sure there is no threads showing under the bottom nut.



Install Hinge Bracket on Jeep Top: (Again, ONLY work on one side at a time!)

1. Open rear glass window. If working on the left side hinge, you may find it easier to remove the rear wiper motor cover to access the bolts on the left side. It just snaps on, so just pull it straight off.
 2. Loosen the 2 mount bolts that connect the hinge to the hard top. They only need to be backed out about 1/4" or about 10 turns.
 3. Next, slide the hinge bracket up under the mount bolts, but over the top of the hinge. Make sure it's pushed up tight against the 2 mount bolts.
 4. Now tighten the 2 mount bolts. (The torque spec is 90 in/lbs. or 10 N·m - NOT Ft/LBS)
- Repeat the steps on the other side.



Hoist the Top Off:

1. Remove all necessary fasteners of the hardtop as indicated by the vehicles owners manual.
2. Lower the RACOR Rack so it is a few inches above the hardtop.
3. Slide the front of the rack with the L-Brackets under the front of the hardtop.
4. In the rear, Clip the spring hooks of the 2 short straps to the hinge hangers brackets.
- 5 Crank it up! Your top is now off. Go out and play topless.



TopsyProducts.com

Oshkosh WI 54902

920-385-9870