

Hoist Bracket Installation Instructions

For TJ, YJ, JK & JL - 2 and 4 door



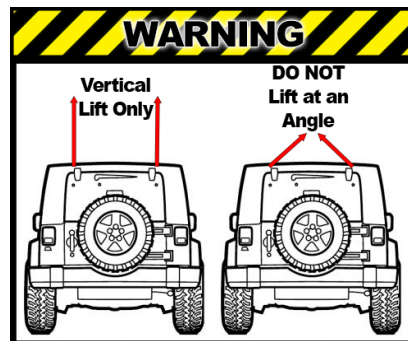
The world's simplest way to remove your hardtop by yourself!

Kit Includes:

2 Rear Hinge Brackets
 (1 left & 1 right)

Tools Needed:

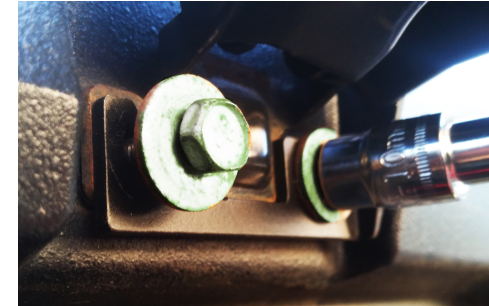
10mm Socket



Installation Instructions

(Tip: **ONLY** work on one side at a time!)

1. Open rear glass window. If working on the left side hinge of a JK, you may find it easier to remove the rear wiper motor cover to access the bolts on the left side. It just snaps on, so just pull it straight off.
2. Loosen the 2 mount bolts that connect the hinge to the hard top. They only need to be backed out about 1/4" or about 10 turns.



3. Next, slide the hinge bracket up under the mount bolts, but over the top of the hinge. Make sure it's pushed up tight against the 2 mount bolts.
4. Now tighten the 2 mount bolts. (The torque spec is 90 in/lbs. **NOT Ft/LBS!!!**)
5. Repeat the steps 1 thru 4 on the other side.



(Hinge Bracket shown un-painted for contrast)

TopsyProducts.com

Oshkosh WI

U.S Patent # 10,246,307



Made in USA