

# TOPSY PRODUCTS

Custom Equipment Design & Fabrication for the Jeep Enthusiast



## STACK RACK'N ROLL

Door Storage System for 4 Door Jeep Wrangler JK & JL



### Kit Includes:

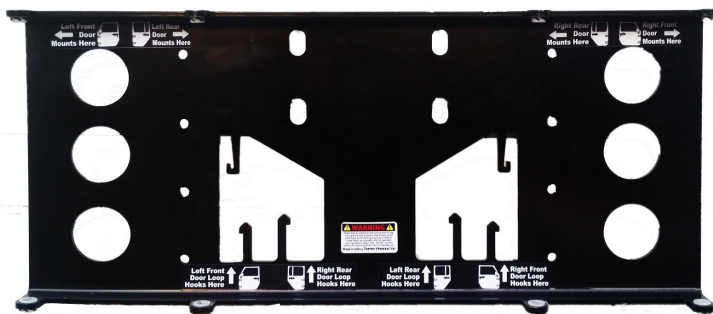
- 1 Door Hanger Mounting Bracket
- 4 9/16" x 2" Bolts
- 4 9/16" Nuts
- 8 9/16" Flat Washers
- 8 Nylon Flanged Bushings

### Tools Needed:

- 7/8" Wrench or Socket
- 13/16" Wrench or Socket

### NOT Included in the Kit

- Engine Stand (1000+ lbs)
- Recommended: Harbor Freight 2000 lbs. Foldable Engine Stand  
Item #69522



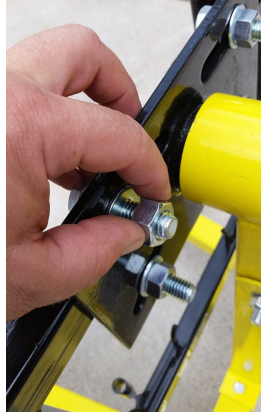
-  4x  
9/16-12 x 2" Hex Bolt
-  4x  
9/16-12 Nut
-  8x  
9/16" Flat Washer
-  8x  
Nylon Flange Bearing  
(Installed at the factory)

# Installation Instructions

## Mounting the Rack to the Engine stand:

Assemble your engine stand according to the directions supplied with the unit. Remove the rack and hardware bag from the shipping carton. Open the hardware bag up and locate the 4 hex head bolts and 4 flat washers. Line up the four bolt mount slots on the rack to the 4 slots on the face of the engine stand mount block. Install one bolt & one washer through each of the slots on the front of the door rack going all the way through the engine mount block. Next, locate 4 hex nuts & 4 flat washers from the hardware bag. Install one flat washer & one nut on each of the bolts that come through the back side of the engine stand mount. Install all hardware before tightening them up. Make sure the door rack mount sits square and level.

*The door rack also has 8 holes (4 on each side) that are 16" on center to allow it to be bolted to a wall. (hardware not included)*



## Hanging the Doors:

*We find the doors are easier to handle if you roll the windows down before removing them from the Jeep.*

First, hang the 2 rear doors by sliding the door's hinge pins into the mount tubes closest to the center of the rack. They will sit with their interiors facing each other. Hook the door loop straps to the corresponding posts as marked on the rack. The straps should cross. **NOTE!!** For the rear doors, JK use the lower hooks and the JL's use the upper hooks. Next, hang the 2 front doors on the outer tubes and hook the loop straps to the corresponding posts as marked on the rack, just like you did with the rear doors. The interior of the front doors should also face the middle of the rack.



**Roll the cart into your garage and get out and enjoy your doorless Jeep!**

Also now Available from Topsy Products:

The world's simplest hard top hoist. Remove your hard top without help from the neighbor!

Check it out at:

[TopsyProducts.com](http://TopsyProducts.com)

Questions or Comments, feel free to call 920-385-9870

