

SHORT SHIFT KIT - VW/AUDI MANUAL TRANSMISSION

66.10.91 / 66.10.92 / 66.10.93 / 66.10.94 / 66.10.95 / 66.02.65 / 66.02.86 / 66.02.87

TOOLS REQUIRED:

1 - 13mm SOCKET
1 - 6" OR LONGER EXTENSION

1 - RATCHET HANDLE
1 - TORQUE WRENCH

1 - SMALL FLAT HEAD DRIVER

The lever displayed on this instruction may look different from what you have depending on vehicle's year and model – install process remains the same.



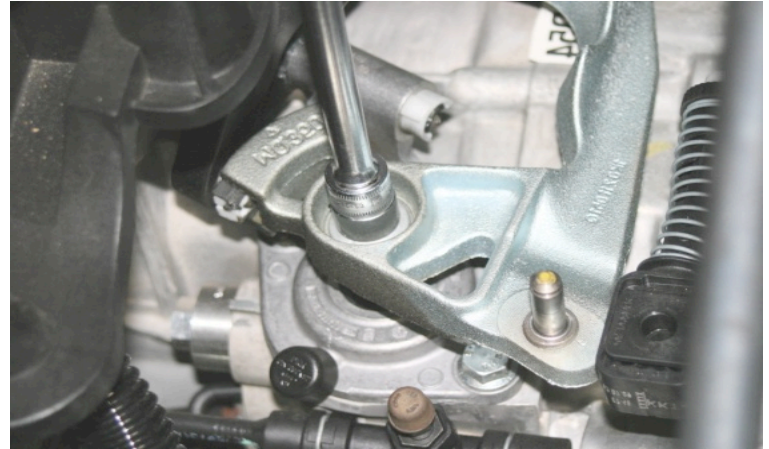
1. Remove air filter box to access factory shifter lever.



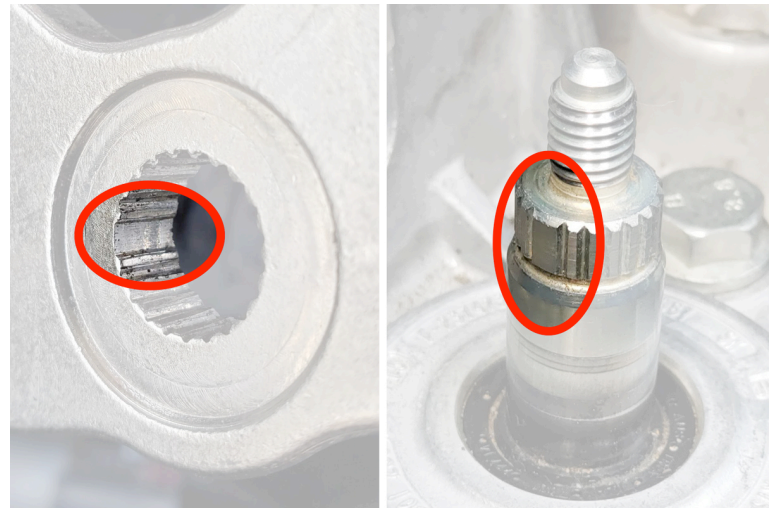
2. Remove clip by prying up the center tab with small flat head screw driver and sliding the clip sideways.

NOTE: Your shifter is equipped with ball style pin if your cable end does not have this round clip. If this is the case, simply pop off the cable end by prying it upward with flat head screwdriver.

3. Slide up cable end and set aside.



4. Undo nut from selector shaft using a 13mm socket.
5. Remove lever by rocking it up and down, back and forth, while pulling it upward simultaneously. Do not use brute force as that may damage the spline seal.
6. Apply small amount of grease to NEUSPEED lever's pin and guide rail surfaces.
7. Install lever by first aligning the rail to the plastic guide on the factory's vertical lever.



8. Line up the indexing key-way on the splines. When installed correctly, the shifter lever should slide over the spline with barely any resistance.
9. Reinstall nut and torque to 20 ft/lb.
10. Reinstall cable end and clip.

NO WARRANTY AGAINST DAMAGED OR STRIPPED SPLINE, WHICH CAN ONLY BE CAUSED BY SPLINE MISALIGNMENT AND/OR LOOSE NUT.