



Company profile

Leaders in
logistics & mobility
management solutions





ABOUT US

MOSFET was founded in 2016 as a SaaS based company with the objective to help businesses & organisations PROTECT AND STREAMLINE their mobile workforce & assets in real time.

MOSFET's Business solutions are designed to:

- Enable organizations to connect & protect their people, assets, workforce & fleets while on the go.
- Enable organizations to maximize the efficiencies of their logistics & mobility operations such that they are insured with tangible & recurring boost to their bottom line.

While MOSFET is doing research on new technologies to help maximize fleet efficiency, the existing platform is ideal for every business that is looking to transform the way it 'delivers'!

Our unique solutions

Our solutions are extremely modular & offer various tools to solve a wide range of industry specific problems. Some of the solutions that we have in the market currently are



Taxi/Truck fleet surveillance management

Reduce empty trips & idle time.
Maximize utilization efficiency.



Last Mile Delivery Management

Automate assignment, dispatch & routing process. Stay updated.



Sales force management

Manage & monitor staff. Track sales, conversions & progress.



Waste collection management

Automate bin pickup tracking process. Maintain proper logs.



Mobile safety & surveillance

Connected cars & fleets using IoT with real-time data capturing.



School transportation management

Manage & monitor buses & route-wise pick-up/drop status.

Platforms built by MOSFET



App for *uberized* logistics
management

An app based platform that is transforming the way on-demand businesses function. A simple mobile app allows our clients to stay connected with their manpower & logistics.

Field force Management; Last mile deliveries; Booking systems



Vehicle fleet safety, monitoring &
management

A New-age telematics platform for vehicle fleets. The platform compliments supports multiple protocols & devices & is majorly gaining traction with other telematics companies.

Taxi's, fleets, Logistics tracking, surveillance & management; Govt & Para-military uses.



School bus tracking & management

Specifically designed keeping in mind the requirements of a school transportation system. BUS 993 gives flexibility & complete control of the bus fleet & provides real-time updates of all movement.

School/Corporate/Public transport surveillance & safety management



Mobile application for **Field force Management; Last mile deliveries;
Booking & Dispatch systems**

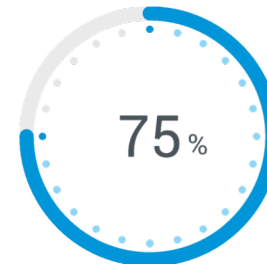
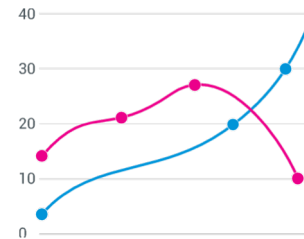
Quick Overview



SYNCO

Workforce & Fleet Mobility Management Platform

- On-demand service management
- Real-time tracking
- Driver pay-out calculation
- Route optimization
- Feedback & rating
- On-ground data capturing



SYNCO is an advanced platform that is capable of catering to almost any on-demand business in the logistics, service or aggregation space.

HOW DOES IT WORK

A simple app available on Android & iOS that enables you to assign jobs, track location & capture information. The application has several tools such as routing, POD capturing, information capturing, automatic assignment, etc. that assist the on-field staff in executing tasks more easily.

Who can use the Synco APP

LOGISTICS, EMERGENCY SERVICES, DELIVERY (First, Middle & Last Mile)

Robust for last mile & on-demand business management, SYNCO offers a variety of features to make fleets smarter through connectivity.

ANY BUSINESS WITH A FIELD-FORCE

SYNCO is helping businesses across various verticals in efficiently tracking their sales staff, orders & lead conversions.

The Problem : **No visibility in Last Mile operations**

The software automatically optimizes & creates a delivery route based on certain parameters



Weight

As per the load to be delivered, the optimum assignment of the orders is done



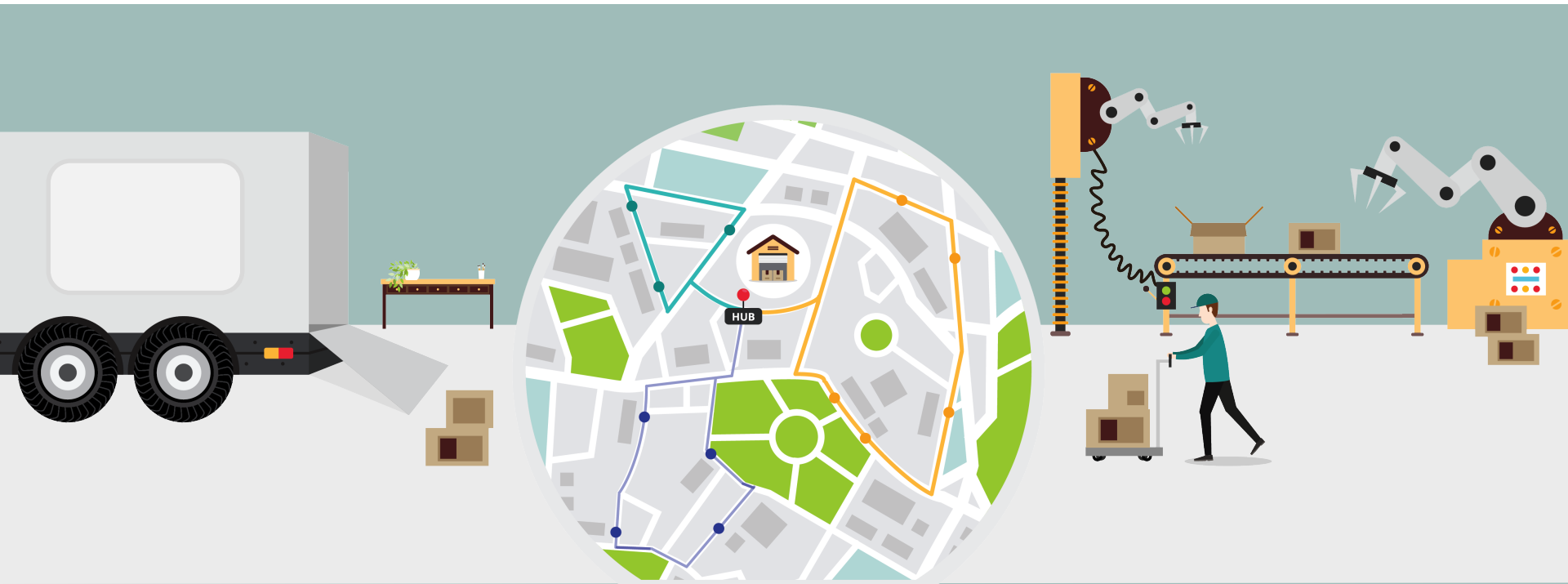
Time slot

Considering the opening & closing time for various retail points the routing is optimized



Location

Based on the geo—location, the shortest or the most efficient route is generated.



Seamless driver application

Drivers get access to simple routing assistance.
Capture other essential parameters.

1. **Daily reporting time to hub**
2. **Proof of delivery at retail points**
3. **Delivery efficiency**
4. **Time wasted in hub**
5. **Daily loading time in hub**

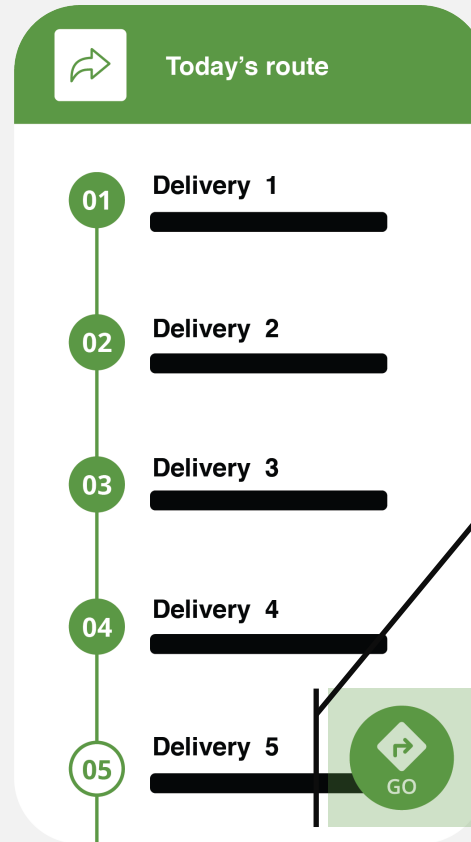


Get reaching time, ETA & leaving time for each vehicle against each retailer .

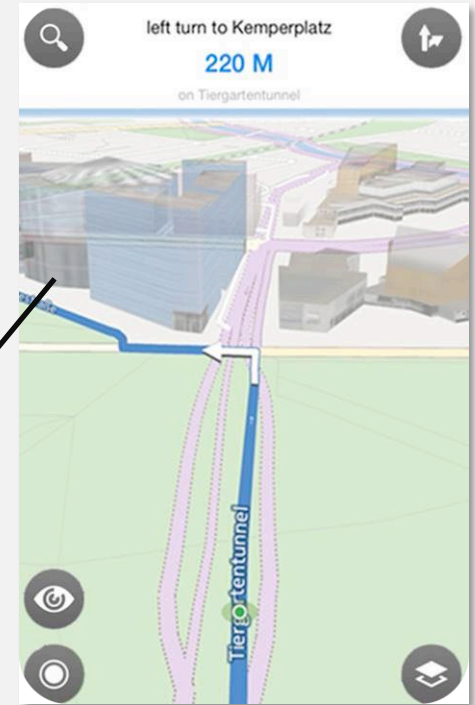


Optionally, share live location updates with retailers to help them track their orders.

Route navigation & routing



Turn by turn navigation
from Here or Google Maps

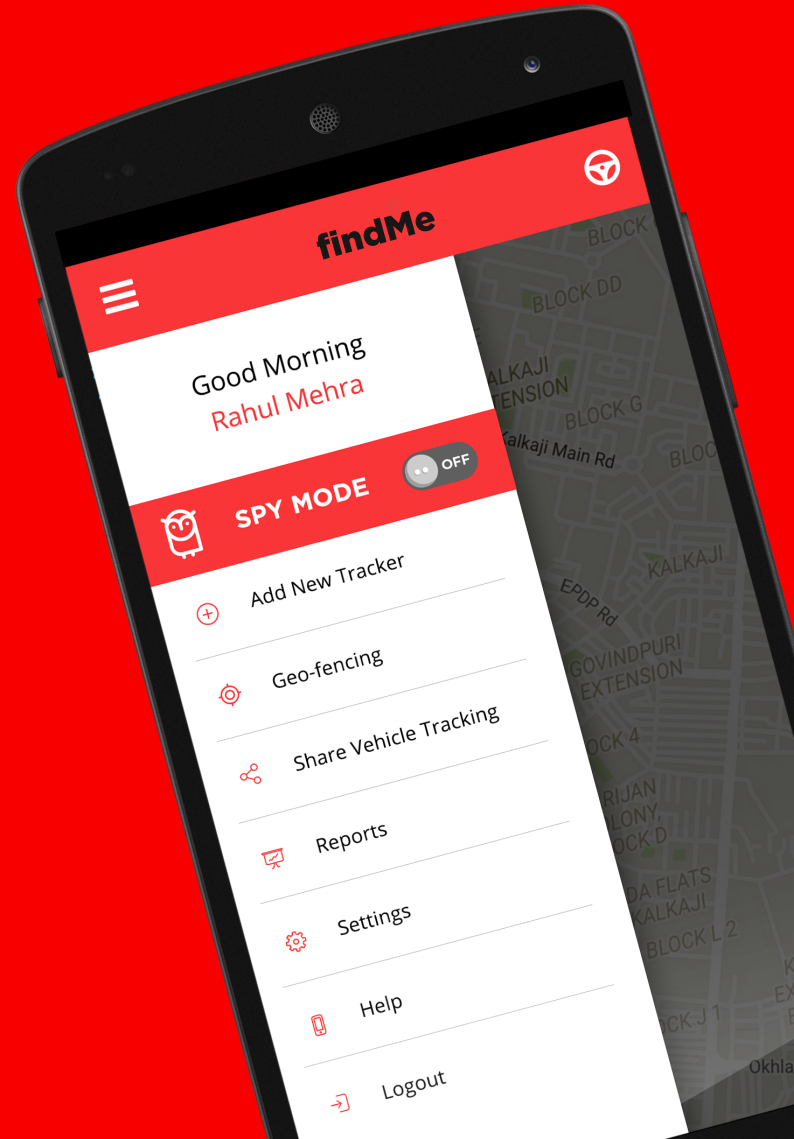
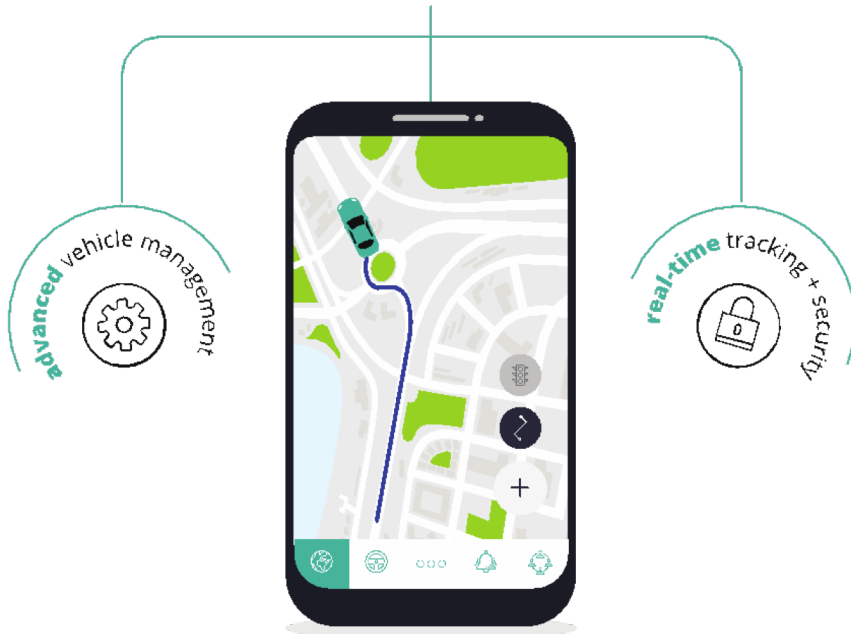
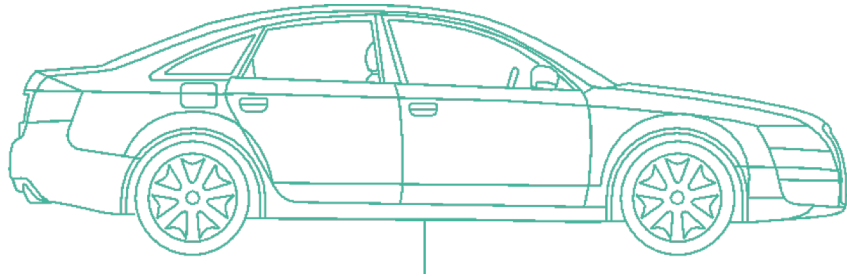


Drivers get the optimum delivery order along with the route to be taken & followed for the most efficient delivery.



Telematics & IoT platform for Taxi's, fleets, Logistics tracking, surveillance & management; Govt & Para-military uses.

Quick Overview



Variants & Additional Features



Door Status Detection



A/C Detection



Temperature
Measurement



Fuel Level Status

1. Door left open? Get notified when your vehicle's door is opened or closed. Safeguard your vehicle from unwanted access.
2. Breaking a sweat while your drivers aren't? Get real-time status of your vehicle's AC. Avoid unmonitored use of your vehicle's AC.
3. Best suited for refrigerated or temperature sensitive asset transportation, findMe offers highly accurate real-time temperature readings
4. Compatible with external fuel sensors, keep a track of the exact amount of fuel in your vehicle's fuel tank.

Extensive Reporting



Location & time reporting & history for each truck



Total distance covered for each trip & each delivery



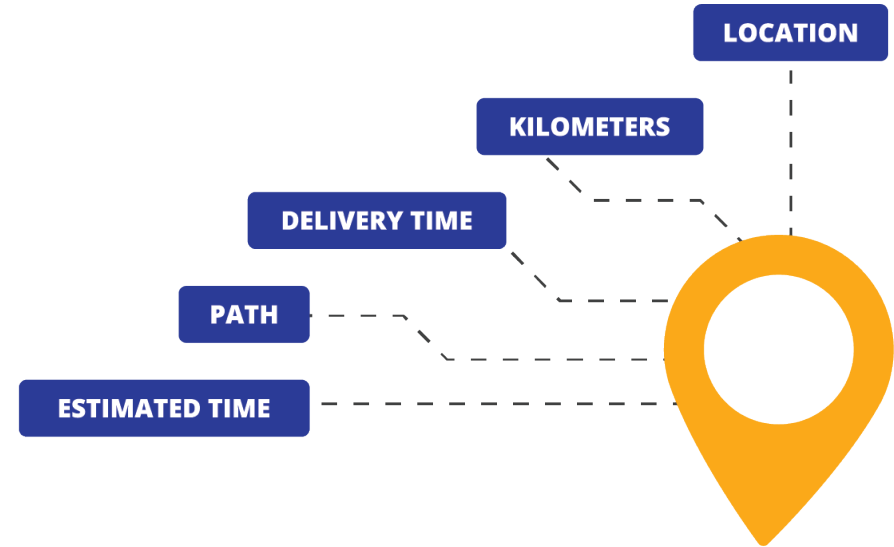
Time taken for each trip daily & average delivery time



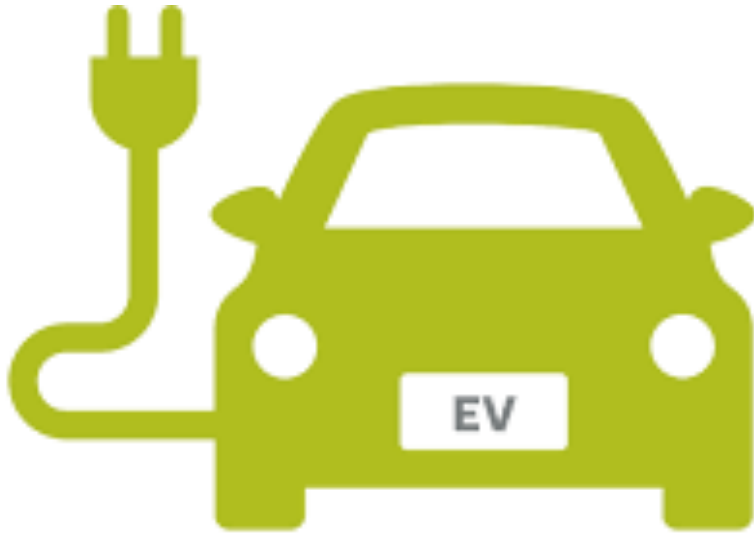
Automatic delivery / reach time capturing at each retailer



Proof of delivery & feedback at retail points



Smart tracking solution for Electric Vehicles

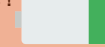


Real-time BMS monitoring

Battery percentage

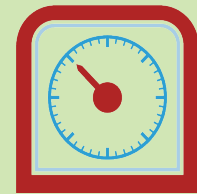


Low battery alerts !



Get real-time battery levels for the EV battery. The device will help you know the exact battery percentage & will notify in case battery is low.

Range left for travel

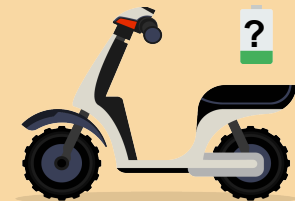
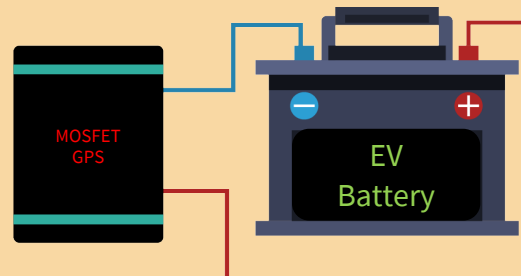


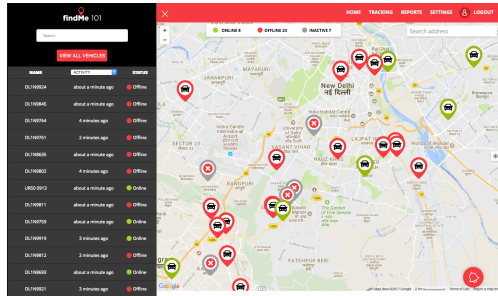
Range left : 50 km

The device will help the users access the range left for travel based on the battery percentage.

A simple GPS device connected to the battery that monitors various parameters

Device current < 0.02 Amp





*Real-time Location
Surveillance*



*Real-time Video & Audio
Surveillance*



*Real-time temperature
& Humidity Monitoring*



*Real-time door sensors
for tamper alerts*

PHARMA

**Temperature &
Humidity Sensor**
Below the AC

GPS Tracker at front
that will provide Real-Time
updates like location, speed,
distance, idle etc on **Mosfet Dekstop
Monitoring System**

Magnetic Sensor
on the door to detect
Open & closing of
doors

**Temperature &
Humidity Sensor**
at the back of the truck

MOSFET Oversight

4G Telematics DashCam



Using AI to Enhance 'fleet management'

Real – time A/V surveillance on vehicles

MOSFET Oversight ensures the safety, efficiency, and sustainability of operations that powers the fleet & security of VIP personnel's , Police & Para-military, dignitaries, etc .

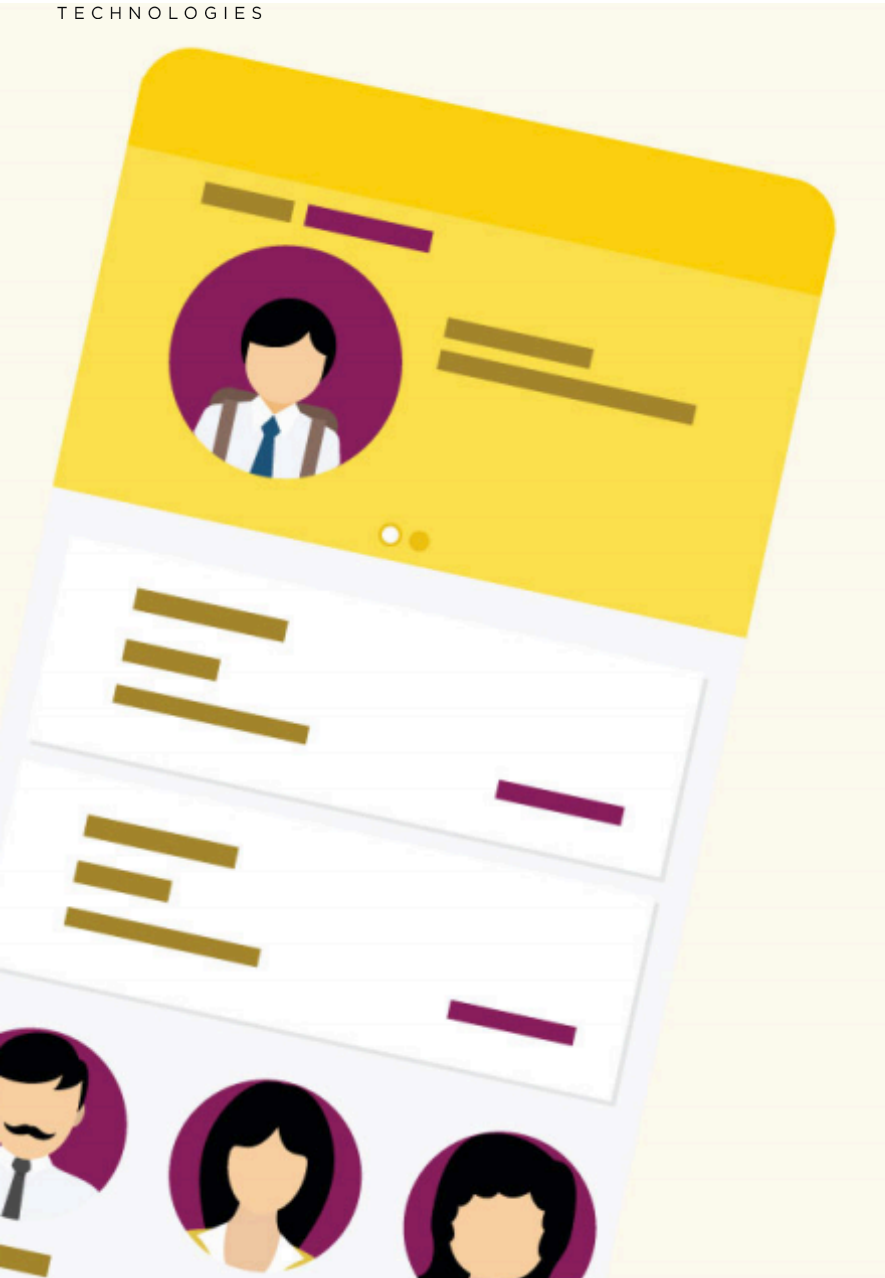


1. Maximize the efficiency of patrolling on various routes
2. Minimize idle time.
3. Provide real-time information.
4. Manage incidents and special events.
5. Coordinate between vehicles on field and back office

BUS993

School bus tracking & management

Quick Overview



Parent App | Driver App | RTO Dashboard

Current issues that we are trying to solve

1. 80% buses are owned by private fleet company owners and individual bus owners.
2. No organized communication system between schools, parents and bus drivers.
3. Tele-calling every parent regularly for pick up and drop for their child.
4. No updated information provided by bus drivers to the schools.
5. No module currently present to update child tracking when left from home to school and school to home.
6. No school bus attendance by drivers to keep a proper track of every child in bus.
7. Over speeding of school buses is a major concern to parents and school authority.
8. School bus breakdown and change of transport vehicle update to school and parents.



Introducing Bus993

A new age solution for real-time tracking of the school buses. Schools can manage their bus fleet and with the access to BUS993 app, parents can know where the bus has reached & when it will arrive. The platform has a wide range of features to keep the school and parents connected to the kids in school buses.

Some of our current engagements





Industry use **case studies**

Brief information on unique solutions



Delhi Police Case Study – Patrolling fleet management

DISTRICTS

North, West, Outer, Central, South-East

FLEET SIZE

1000+ & growing



SUCCESSFULLY REDUCED CRIME RATE THROUGH REAL-TIME MONITORING

With the help of real-time monitoring, the districts have been able to reduce the response time significantly while also improving the patrolling activity. The platform allows the senior officials to make sure patrolling is properly carried out. With the help of reports, specific routes have been defined & identified.

Total Patrolling Fleet Size in India - 1,60,000 + Vehicles

We have integrated the platform with the Police Force's current crime intelligence platform to provide them with more reliable, extensive data received from the patrolling fleet. This data would help in better management of the fleet & more efficient deployment of patrolling officers across cities.

Location, Video & Voice tracking





Last Mile Delivery Management Case Study

PROJECT FOR

Last Mile delivery

FLEET SIZE

3000+



REAL-TIME DELIVERY FLEET EFFICIENCY MONITORING

Creation of an unique platform for Udaan where the entire fleet's efficiency is monitored in real-time on a daily basis.

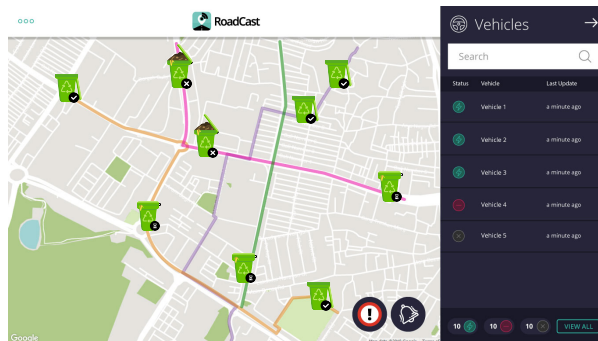
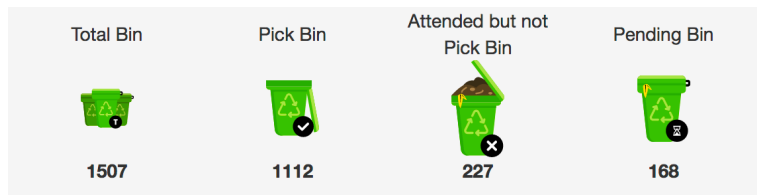
TRANSPORT MANAGEMENT SYSTEM

With the platform, we have been able to create a system which automates several work-flows for Udaan. The following parameters are captured & reported to Udaan's team on a daily basis

1. *Reporting time calculation*
2. *Delivery time calculation*
3. *Delay calculation*
4. *Vendor invoicing automation*
5. *6 – level visibility management*
6. *Fault / exception reporting*



NDMC Case Study – Waste pick up management



Pickup analysis & overview

With real-time data capturing you can get access to graphical analysis for route-wise bin pickup efficiency. Get actual comparison based on number of bins missed & picked.

Total waste management Fleet Size in India – 2,50,000 + Vehicles

“By 2025 , the waste management market size in India is projected to be worth ~USD 14 Billion with an annual growth hovering around 7 percent. Considering the current urban trends, it is not at all surprising to mention that the MSW quantum in India can see an increase of double the existing volumes by ten years down the line. Infact, it is projected to hover around 80-85 MTs by 2030, offering a business case of approximately USD 20 Billion. “

- Source : Wikipedia



Rakshak / C.A.T.S Case Study – Ambulance Booking & Dispatch System



**Reduced Ambulance TAT by over 50 minutes; Achieved additional 3 calls per ambulance per day!
Drastically enhanced ambulance visibility across the zones.**

A robust system built to serve life saving critical processes. Ensuring Ambulance providers SLA's are met;
Ambulance abandonments are avoided & quality control & standardization of hardware, software & careware.



Centralized Command & Control Panel

With real-time data capturing you can get access to graphical analysis for Spatial positioning of ambulances, daily overview of jobs coming in, hourly dispatches & load & criticality is managed in real time.



1. *Avoiding Ambulance Abandonments*
2. *On-Demand Systems*
3. *Pre-Arrival Notifications*
4. *Meeting business SLA's*
5. *Route optimization, Spatial positioning*
6. *Saving Lives*



Adobe Case Study – Employee Transport Security

PROJECT FOR

Fleet Management & Safety

FLEET SIZE

800+



Problem Statement: To ensure the safety of their employees using the Office chartered transport while commuting to & from work.

Deployment of MOSFET Oversight; & establishing a central command & control room with Emergency Response systems, SOS Alarms & Live A/V Communication while also ensuring employee privacy

Technology to empower employee security

Once the employee triggers the SOS button - instantly sounds a siren in the Transport control room (in their regional HQ). Vehicle in question appears on the screen giving the control room in charge A/V of inside & outside the vehicle with 2 way communication with vehicle occupants & Emergency response from Police/Ambulance

1. Route of the vehicle (if its inside its designated route or not) with live speed and distance travelled.
2. Access button to the cameras & the option of communication with audio & visuals to the passenger or driver to access the danger. (option only available when PANIC/SOS alarm is pressed to protect employee privacy).
3. Log & recording of any incident in case it happens on secured company owned server for proof.



PEAK Infra Case Study – Highway response system

Emergency response management system

While the assistance is requested, SYNCO also allows users to track the assistance in real-time with ETA. This helps in easier coordination, faster & more coordinated response.

MOBILE APP ENABLED (UBERIZED) HIGHWAY ASSISTANCE TEAMS

Real-time highway inspection

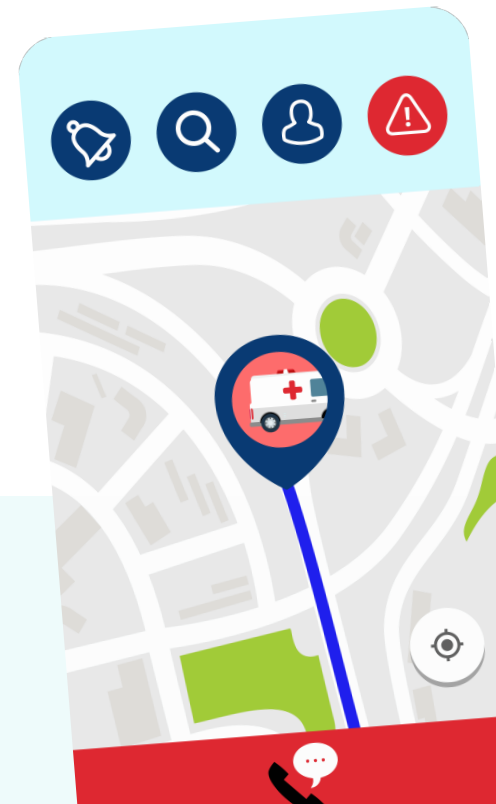
Highway inspection teams also use SYNCO to push real-time information to the admin along the highway with POIs & locations of interest. A simple form tool enables easy inspection & reporting.

HIGHWAYS

7 – AEL, REL, GICL, MNEL, KBICL, RSIL, SEL

GPS powered fleet – cranes, ambulances, tow trucks, etc.

Additionally, the entire highway assistance vehicle fleet is equipped with findMe to ensure better vehicle safety & monitoring

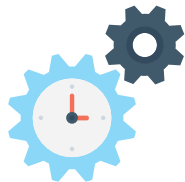


New Technology & Innovation



Innovative Vehicle Management

Creating new & innovative tech around vehicle tracking. With innovations into active sensors that allow users to monitor more than just the location & vehicle status monitoring refrigerated logistics, remote fuel measurement, fuel management & other sensing tech.



Workflow Automation

Our efforts are driven towards helping businesses automate their workflows using software. We are enabling businesses globally to reduce manpower & eliminate discrepancies & human error from their operations, hence making their offerings more reliable & errors traceable.



Analytics & BI

We have & are constantly striving to create a smarter platform that provides our customers with in-depth analysis & predictions to help them scale their business faster while cutting down on costs. We are working on data to provide business intelligence through technology.



New Mobile Based Platforms

While working on our core product offering, MOSFET has also created certain industry specific technology that seamlessly integrates with the existing product range. We have created customized solution for some major players in the market.

Thank you

For your time. – Team MOSFET



For more information please visit www.mosfettech.com

Or connect with us via

Email: info@mosfettech.com

Phone: +91-9667227027