
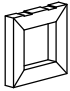






## Assembly instructions

- We suggest you spend a short time reading through this leaflet and then follow the simple step by step instructions.
- Do not discard any of the packaging until you have checked that you have all the parts and the pack of fittings.





### PARTS

A	B	C	D	E	F
					
Top <b>1x</b>	Base <b>2x</b>	Metal Brackets (175x50x9mm) <b>4x</b>	Ø5x40mm <b>8x</b>	Ø5x30mm <b>8x</b>	Pre Drill Bit <b>1x</b>

### REQUIRED



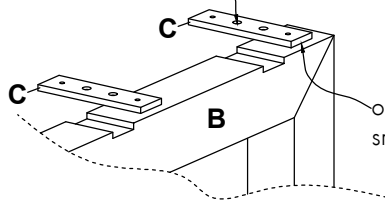
2 people  
required for  
assembly

1	2	3	4
			
Impact Driver	Brushless Hammer Drill	Phillips Head Bit	Tape Measure

## 1

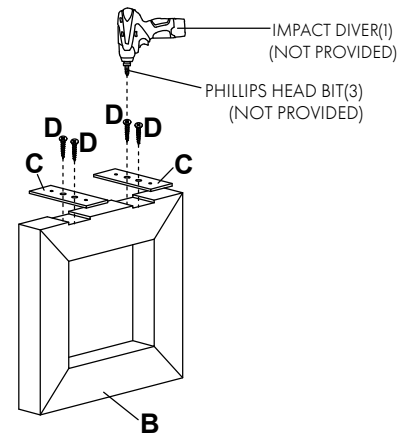
- The shallow holes in the middle of the bracket face up to allow for the head of the screw to fit flush in the bracket.
- on the underside of the bracket the small holes are shallow.
- Attach metal brackets C to top of the table base B.

The shallow holes in the middle of the bracket face up to allow for the head of the screw to fit flush in the bracket



1-1

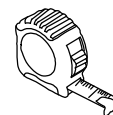
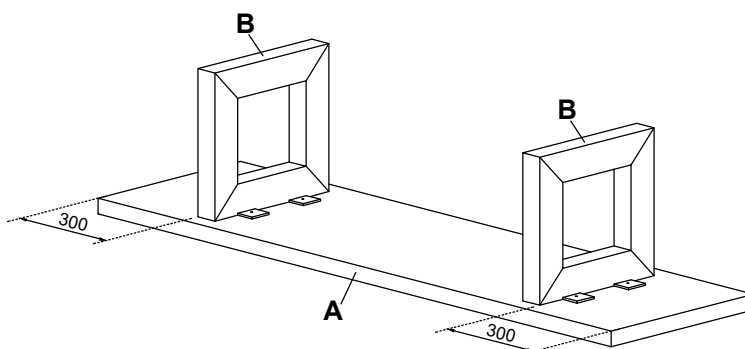
on the underside of the bracket the small holes are shallow



1-2

## 2

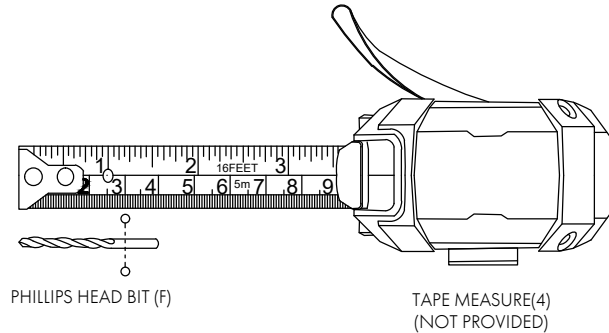
- To protect your floor and your new Bench, lay a drop sheet or something that is a clean soft surface.
- Lay your new table top face down on the Drop sheet so that the black metal brackets are showing face up.
- Use your tape measure(4) to place the legs between 300mm and 400mm from both sides of the table ends, ensuring you clear the metal brackets on the underside completely, to avoid drilling directly into the bracket.



TAPE MEASURE(4)  
(NOT PROVIDED)

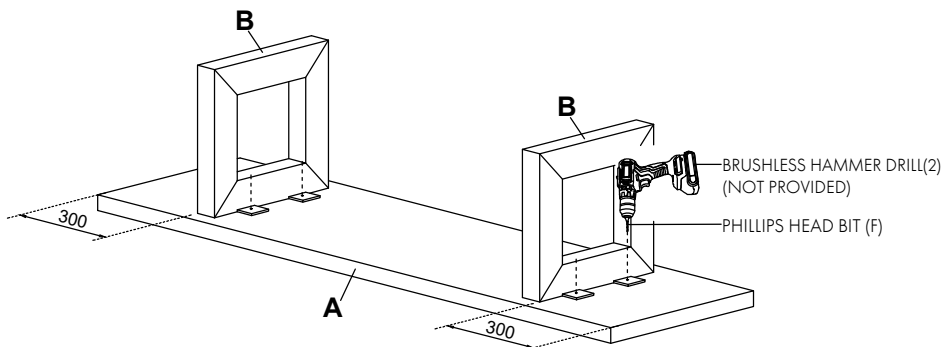
### 3

- On your Pre Drill Bit (F), use a tape measure(4) to determine 30mm from the end of the drill bit.



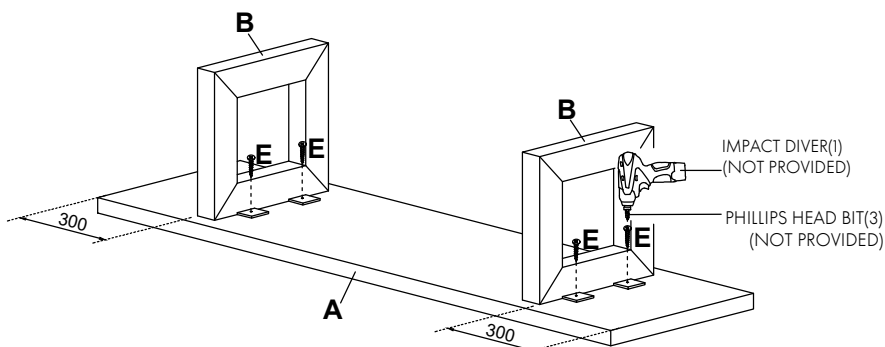
### 4

-Once the Table base is centered, use the Brushless Hammer Drill(2) with the Pre Drill Bit (F) to pre-drill holes 30mm deep where the screws will go into the metal brackets.  
- Ensure to predrill slowly at an even pressure, directly from above - ensure you are not on an angle. Only drill to a depth of 30mm.



### 5

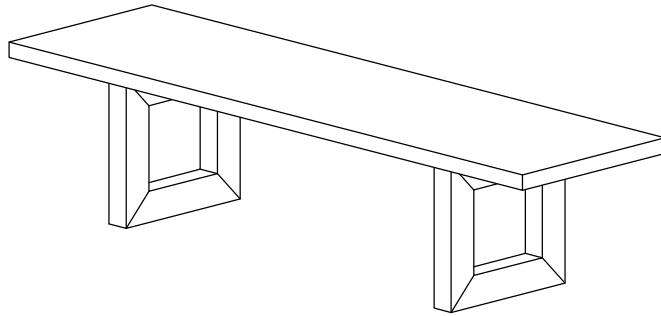
- Switch to using your Impact Driver(1)  
- Using screw (E) in your Impact Driver, apply even pressure until 1/3 of the screw is submerged into the tabletop. Switch your drill to reverse and reverse the screw out, change back to drill and screw down until the screw is 2/3 submerged into the table top, then reverse out again, then change back to drill and drill down until the screw is fully submerged into the table top and flush on the surface.



---

**6**

- Carefully turn the bench to be on the right side up, and place it in your desired location.



**WARNING:**

- These table parts can be cumbersome and heavy; the assistance of two or more people is recommended in order to prevent personal injury and ensure the table parts are not damaged during the assembly process.
- Keep fittings out of childrens' reach