




CLEMENTS WALL MIRROR (3008M-2)

MCM HOUSE

Assembly instructions

We recommend MCM mirrors are hung by professional installers for the safest and most precise results.

PARTS

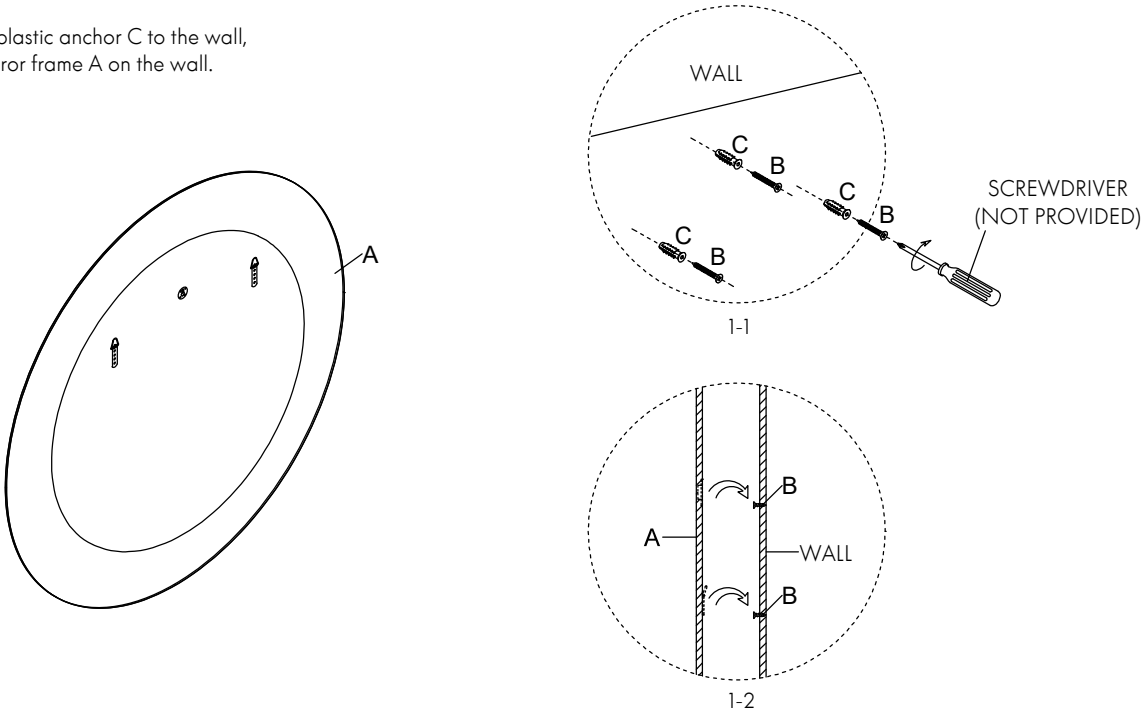
<div>A</div> <div></div> <div>Mirror frame</div> <div>1x</div>	<div>B</div> <div></div> <div>38mm Self-tapping Screw</div> <div>3x</div>	<div>C</div> <div></div> <div>Plastic anchor</div> <div>3x</div>
--	---	---



2 people
required for
assembly

1

Lock the screw B and plastic anchor C to the wall,
and then Hang the mirror frame A on the wall.



2

Finished assembly.

