

# BREMSKERL

The Specialist  
for Brake  
and Clutch  
Linings



## Safety. Longevity. Reliability.

## Bremskerl R600 Sintered Material

Developed for high energy applications to provide a higher level of performance.

- Consistent friction output
- Minimized hot spotting on rotor
- High temperature resistance

**Bremskerl R600 brake pads produce fewer sparks which reduces your risk of fire in the nacelle. They reduce the need to turn/machine the rotor and provide longer pad life which reduces your operating costs.**

### Bremskerl R600



Before



During



After

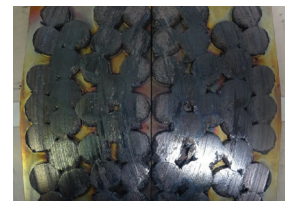
### OE Competitor



Before



During

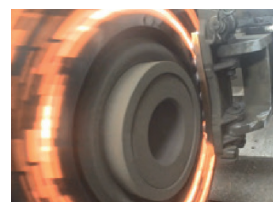


After

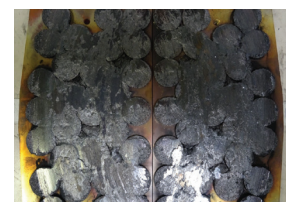
### Aftermarket Competitor



Before



During



After



ISO 9001:2015  
Certified

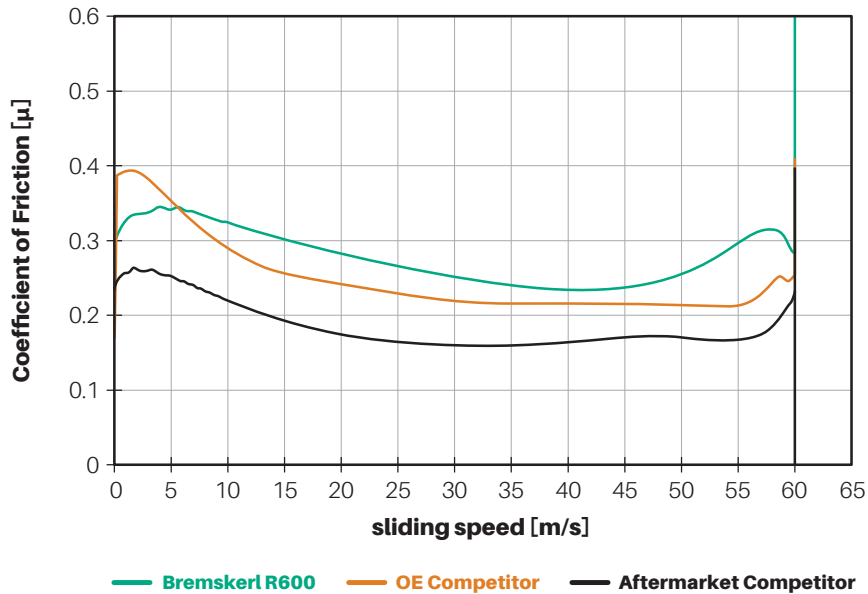
www.tuv.com  
ID 0091005970

All photos are taken during the same point of the test procedure.

# Bremskerl Outperforms

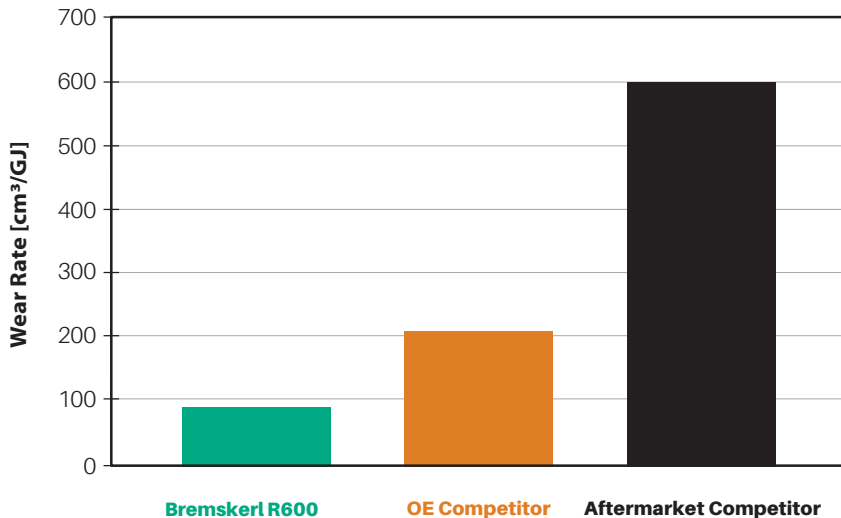
## Excellent Friction Stability

Graph depicts stops from 60 m/s to 0



## Longer Life Over Competitors

Bremskerl R600 has **2.4x longer life** than OE Competitor and **7.1x longer life** than Aftermarket Competitor



Wind Turbine  
Applications Stocked  
Custom Pad Development  
Available

Part Number	Application
<b>S6000001</b>	Bubenger SFRA 8
<b>S6000002</b>	Bubenger SFRA 12
<b>S6000003</b>	Brembo
<b>S6000004</b>	Svendborg 3000, 22 pucks
<b>S6000005</b>	Svendborg 3000, 34 pucks
<b>S6000006</b>	Svendborg 3000, 41 pucks
<b>S6000007</b>	Carlson Model 9051
<b>S6000008</b>	Antec Series 900
<b>S6000009</b>	Stromag SIME TH9 Emergency Brake

\*All parts supplied are BREMSKERL. Use of other manufacturer's names, part numbers or trademarks are for informational and identification purposes only.

# BREMSKERL



P 630.540.2790

F 630.540.2791

E sales@bremskerl.com

[bremskerl.com](http://bremskerl.com)

© 2021 Bremskerl North America, Inc. is a subsidiary of BREMSKERL-REIBBELAGWERKE EMMERLING GMBH & CO. KG