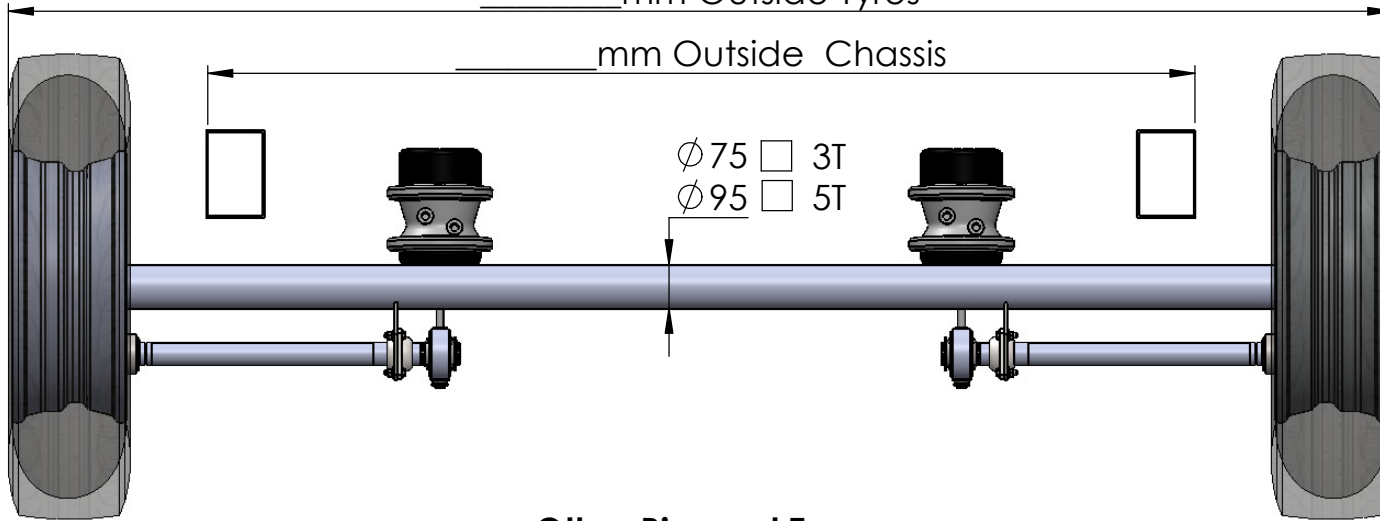


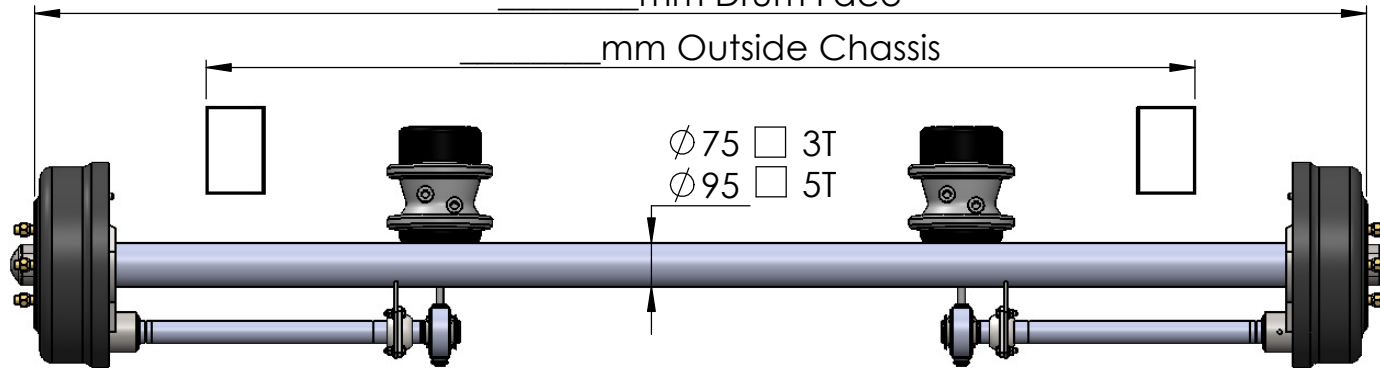
### TEA Rim and Tyres

mm Outside Tyres



### Other Rim and Tyres

mm Drum Face



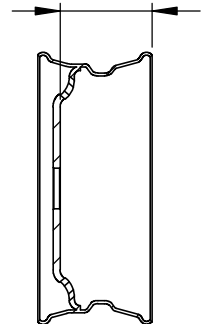
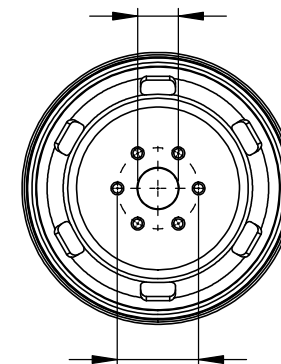
Tick appropriate box's

|                |   |
|----------------|---|
| Send to TEA    | Fax: 03 9791 4354<br>Email:<br>info@transportequip.com.au |
| Customer Name: |   |
| Contact:       |   |
| Phone no:      |   |

3T - Spigot 70mm

5T - Spigot 165mm

Rim Offset  
mm



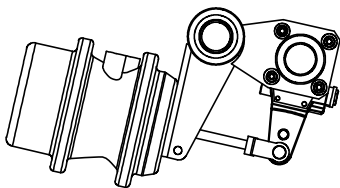
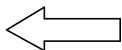
3T - 6 Stud x 139.7 PCD

5T - 6 Stud x 222 PCD

Tyre Size  
mm

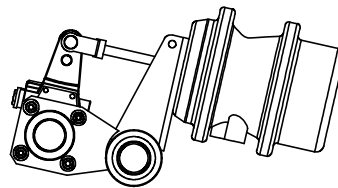
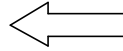
### Cam Position 1

Front



### Cam Position 2

Front



Mechanical Suspension Only

3T - 5T Axle  
Identification Sheet

Date: 9-06-17

