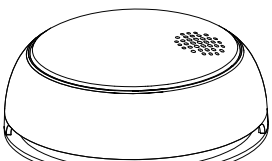




Instruction Manual Photoelectric Smoke Alarm



IMPORTANT! PLEASE READ CAREFULLY AND SAVE.
This user's manual contains important information about your Smoke Alarm Device's operation.
If you are installing this Smoke Alarm Device for use by others, you must take this manual or a copy of it with the end user.

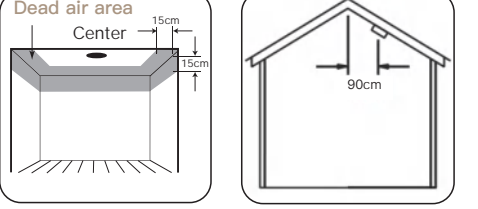
*The pictures shown are for reference only.
*As the technology is constantly updated, if actual operation is inconsistent with the user manual, please refer to the actual operation, and the final interpretation rights is reserved to the manufacturer.

Photoelectric alarms are generally more effective at detecting slow, smoldering fires that smolder for hours before bursting into flames. Sources of these fires may include cigarettes burning in couches or bedding.
Ionization alarms are generally more effective at detecting fast, flaming fires that consume combustible materials rapidly and spread quickly. Sources of these fires may include flammable liquids or paper burning in a waste container.
However, both types of alarms provide adequate detection of both types of fires.
If you desire the earliest detection of both smoldering fires and fast flaming fires, you should install smoke alarm devices that combine both photoelectric and ionization sensing technologies in one unit.

Smoke alarm devices have limitations. This smoke alarm device is not fireproof and is not warranted to protect lives or property from fire. Smoke alarm devices are not a substitute for insurance. Homeowners and renters should insure their lives and property. In addition, it is possible for the smoke alarm device to fail at any time. For this reason, you must test this smoke alarm device weekly.

WHERE TO LOCATE

- As a minimum, smoke alarm devices should be located between sleeping areas and potential sources of fire such as living rooms and kitchens. In single story homes with one sleeping area, a smoke alarm device should be installed in the hallway, as close as possible to the living accommodation. To ensure audibility in bedrooms, no smoke alarm device should be further away than 3m from any bedroom door. It may be necessary to install more than one smoke alarm device, particularly the hallway is more than 15m long. In single story homes with two separate sleeping areas, a minimum of two smoke alarm devices are required, one outside each sleeping area. In multilevel or split level homes, as a minimum a smoke alarm device should be installed on the ground floor between the staircase and any rooms in which a fire might start and on each story in circulation areas which form part of escape route (normally hallways and landings).
- Additional alarms should be installed in bedrooms in anticipation of fires originating here, caused by faulty wiring, lights, appliances, smokers or other hazards.
- For best protection, smoke alarm devices should be installed in every room in your home, apart from those listed in the Section 4 LOCATIONS TO AVOID. Heat alarms should be used in kitchens, boiler rooms, laundry rooms, garages and such like, where smoke alarm devices would be unsuitable.
- Install smoke alarm devices in circulation areas at a distance no greater than 7.5m from the farthest wall, no greater than 7.5m from a door to any room in which a fire might start and no greater than 7.5m from the next smoke alarm device.
- As it is impossible to predict the source of a fire, the best location for an alarm is usually the center of a room or hallway. If it is necessary to place a smoke alarm device on a wall, always locate the detection element of the alarm 150mm to 300mm (to 12 inches) below the ceiling and the bottom of the alarm above the level of doors and other openings.
- In rooms with simple sloped, peaked or gabled ceilings, install smoke alarm devices on the ceiling 900mm (3 feet) from the highest point of the ceiling. "Dead air" at the peak of a ceiling may prevent the smoke from reaching the alarm in time to provide an early warning.



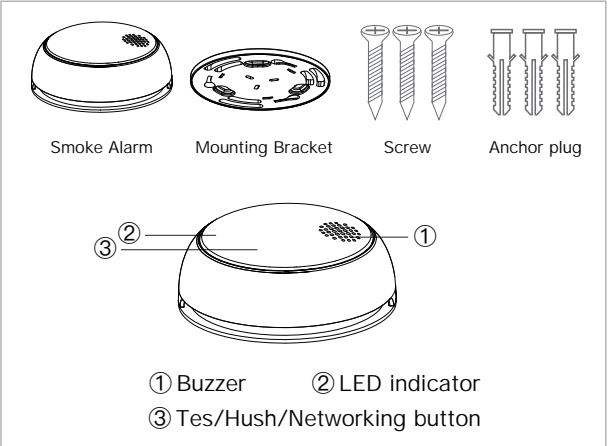
7. Read Section 4 LOCATIONS TO AVOID and Section 13 LIMITATIONS OF SMOKE ALARM DEVICES in this manual.

- Bitte scannen Sie den QR-Code, um das deutsche Handbuch, das Installationsvideo und die Funktionseinführung zu erhalten
- Escanee el código QR para obtener el manual en español, el video de instalación y la introducción de la función
- Veuillez scanner le code QR pour obtenir le manuel en français, la vidéo d'installation et l'introduction des fonctions
- Отсканируйте QR-код, чтобы получить руководство на русском языке, видео по установке и описание функций
- Scansionare el codice QR per ottenere il manuale in italiano, il video di installazione e la guida alle funzionalità. Video di installazione e funzionalità
- Leia o código QR para obter o manual em português, o vídeo de instalação e a introdução das funções
- Zeskanuj kod QR, aby uzyskać instrukcje, filmy instalacyjne i funkcje



PACKING LIST

PART NAME	QUANTITY
Smoke Alarm	1 Piece
Mounting Bracket	1 Piece
Manual	1 Piece
Screw	3 Piece
Anchor plug	3 Piece



1. Working voltage: 3V_{DC} (1x CR123A/ CR17335 Lithium Battery)
2. Visual alarm signal: red LED Indicator
3. Sound Level: >85dB (at 3m straight ahead)
4. Working temperature: 0°C~+55°C
5. Working humidity: <95%RH (no condensation)
6. Mounting: wall mounting or ceiling mounting
7. Frequency band: 2.4GHz
8. Maximum radio transmitting power: <+10dBm

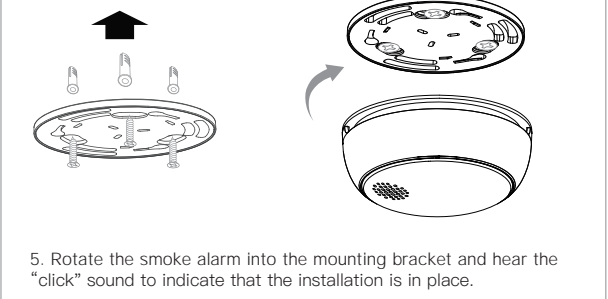
TECHNICAL PARAMETER

Battery Operated
Replaceable lithium battery helps to lengthen the lifetime of smoke alarm by replacing new battery.
Operating Light (LED)
Flashes approximately every 53 seconds confirming the smoke alarm is powered and working normally.
Low Battery Warning
Alarm beeps every 53 seconds when the battery is low.
Alarm Pause (Hush mode)
Silence your smoke alarm device by momentarily pressing the test button when non-emergency smoke causes nuisance alarm. The red light flashes every 10 seconds to remind you that the smoke alarm device has been silenced. The alarm will automatically be reset after 10 minutes, and sound the alarm if particles of combustion are still present. Local hush function and remote hush function are both available.

SUPERIOR FEATURES

HOW TO INSTALL

- Power on the smoke alarm firstly, press and hold the test button for about 3 seconds, confirm that the red light flashes rapidly, and the buzzer sounds "Di-Di-Di";
- Select a proper install location, punch holes on the installation surface with a drill;
- Insert anchor plugs into drilled holes;
- Secure the mounting bracket with screws;



5. Rotate the smoke alarm into the mounting bracket and hear the "click" sound to indicate that the installation is in place.
6. Press and hold the test button for more than 1 second, confirm that the red light flashes rapidly, and the buzzer sounds "Di-Di-Di".

VISIBLE AND AUDIBLE INDICATIONS

CONDITION	LED	HORN
Normal Operation	Red LED flashes once every 53 seconds.	None
Test Condition	Red LED flashes rapidly	Short quick beeps
Alarm Condition	Red LED flashes rapidly	Short quick beeps
Low Battery	Red LED flashes every 53 seconds	One beep every 53 seconds
Malfunction	Red LED flashes twice every 53 seconds	None
LocalHush for alarm condition	Red LED flashes once every 10 seconds	None(Duration: about 10 minutes)
LocalHush for low battery alarm	Red LED flashes once every 53 seconds	None(Duration: about 12 hours)
Remote Hush for alarm condition	Red LED flashes once every 10 seconds	None(Duration: about 10 minutes)

Attention: If remote silencing function is available, any remote silencing feature shall only be used in line of sight of the smoke alarm.

- Test function
Press the test button periodically to check and confirm the smoke alarm is working normally.
- Audible and visible alarm signals
When detected smoke reaches alarm threshold of the smoke alarm, red light will flash quickly and the buzzer will issue loud and quick beeps sounds.
- Easy Installation
Fixings supplied.

IMPORTANT SAFETY INFORMATION

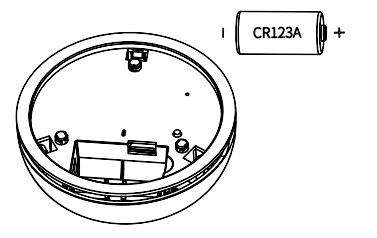
WARNING
PLEASE READ AND SAVE THESE INSTRUCTIONS.
DO NOT remove or disconnect battery to quiet unwanted alarms. This will remove your protection. Open windows or evacuate the air around the smoke alarm device to silence it.
The test button accurately tests all smoke alarm device functions. DO NOT use any other test method. Test smoke alarm device weekly to ensure proper operation.
This smoke alarm device should be installed only by a licensed, qualified electrician. Observe and follow all local and national electrical and building regulations for installation.
This smoke alarm device is NOT designed to be the PRIMARY protection for buildings that require complete fire alarm systems. Buildings of this type include hotels, motels, dormitories, hospitals, nursing homes, and group homes. This is true even if they were once single family homes. However, this smoke alarm device MAY be used inside individual rooms as SUPPLEMENTAL protection.
Install a smoke alarm device in every room and on every level of the home. Smoke may not reach the smoke alarm device to silence it. For example, if a fire starts in a remote part of the home, on another level, in a chimney, wall, roof or on the other side of a closed door, smoke may not reach the smoke alarm device in time to alert household members. A smoke alarm device will not promptly detect a fire EXCEPT in the area or room in which it is installed.
Smoke alarm devices may not alert every household member every time. The alarm horn is loud in order to alert individuals to a potential danger. However, there may be limiting circumstances where a household member may not hear the alarm (i.e., outdoor or indoor noise, sound sleepers, drug or alcohol usage, the deaf or hearing, etc.).
If you suspect that this smoke alarm device may not alert a household member, install and maintain special smoke alarm devices. Household members must hear the alarm's warning sound and quickly respond to it to reduce the risk of damage, injury, or death that may result from fire. If a household member is hard of hearing, install special smoke alarm devices with lights or vibrating devices to alert occur. If you have a hearing aid, use smoke alarm devices can sound their alarms only when they detect smoke. Smoke alarm devices detect combustion particles in the air. They do not sense heat, flame, or gas. This smoke alarm device is designed to give audible warning of a developing fire. However, many fires are fast-burning, explosive, or intentional. Others are caused by carelessness or safety hazards. Smoke may not reach the smoke alarm device QUICKLY ENOUGH to ensure safe escape.

FALSE ALARM CONTROL

The alarm features a False Alarm Control that, when activated, unwanted alarms will be silenced for up to 10 minutes.
How to activate the False Alarm Control:
Press and release the test button during an unwanted alarm to silence the alarm horn. This means the smoke alarm device is in False Alarm Control.
If the smoke alarm device does not go into False Alarm Control and continues to sound its loud alarm horn or on the other side of a closed door, smoke may not reach the smoke alarm device in time to alert household members. A smoke alarm device will not promptly detect a fire EXCEPT in the area or room in which it is installed.

BATTERY REPLACEMENT

- Rotate the smoke alarm out of the mounting bracket
- Replace to a new battery, once powered on, red LED of the smoke alarm will flash once and goes off. Press and hold the test button. If the smoke alarm issue alarm sounds three time, it indicates the alarm is working normally.

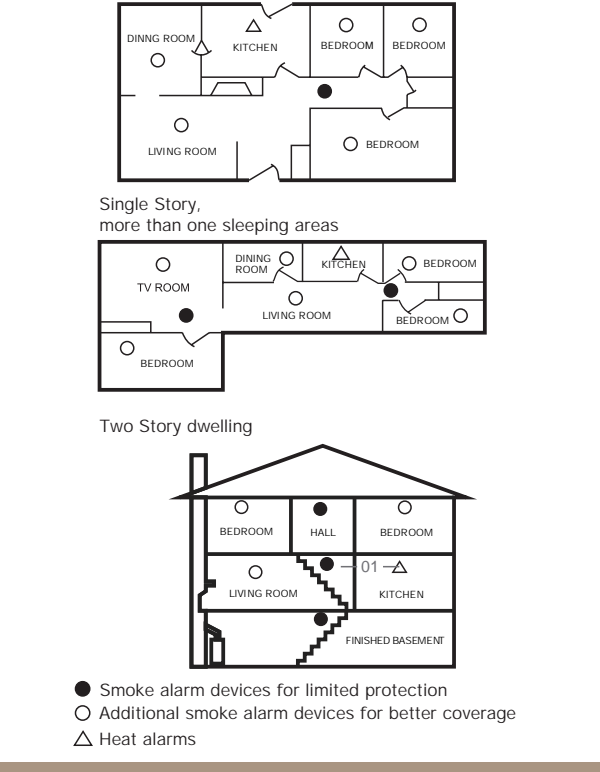


CAUTION!
Danger of explosion if battery is incorrectly replaced. Replace only with the same or equivalent type.

TESTING AND MAINTENANCE

This unit has been designed to be as maintenance-free as possible, but there are a few simple things you must do to keep it working properly:
1. Test it at least once a week.
2. Test button accurately tests all functions. DO NOT use an open flame to test this smoke alarm device. You may ignite and damage the smoke alarm device or your home.
3. Test smoke alarm devices weekly and upon returning from vacation or when no one has been in the household for several days.
4. Stand at arm's length from the smoke alarm device when testing. The alarm horn is loud to alert you to an emergency and can be harmful to hearing.
a. Press and hold the test button for more than 1 second to test the alarm. The alarm will sound loud short beeps. The alarm may stop sounding once releasing the test button.
b. If smoke alarm device does not sound, check whether the alarm is properly attached to the mounting bracket.

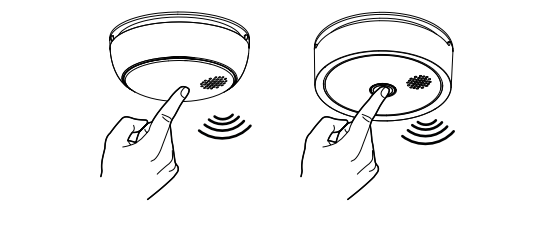
LOCATIONS TO AVOID



Smoke alarm devices for limited protection
Additional smoke alarm devices for better coverage
Heat alarms

DO NOT locate smoke alarm devices:

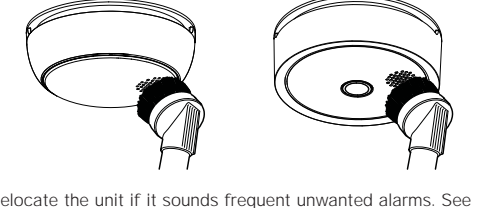
- In turbulent air from fans, heaters, doors, windows, etc., which could draw smoke away from the alarm.
- At the peak of an "A" frame ceiling. "Dead air" at the top may prevent smoke from reaching the alarm in time to provide early warning.
- In insect-infested areas. Tiny insects may affect performance.
- In kitchens, boiler rooms, laundry rooms, garages. Combustion particles from cooking or car exhaust and dust and moisture could trigger a nuisance alarm.
- In very dusty or dirty areas. Dirt and dust can build up and impair performance.
- Within 300mm (12 inches) of light fittings or room corners.
- In locations which would make routine testing or maintenance hazardous (e.g. over a staircase).
- On poorly insulated walls or ceilings.
- Near objects such as ceiling decorations which might impede the path of smoke to the alarm.
- Within 1500mm (5 feet) of fluorescent light fittings.



NOTE: Replace the alarm if the test function does not operate properly.

DANGER: If alarm horn sounds, and smoke alarm device is not being tested, the smoke alarm device is sensing smoke.
The sound of the alarm horn requires your immediate attention and action.

- Clean the smoke alarm device at least once a month; gently clean the outside of the smoke alarm device with your household soft brush. Remember to test the smoke alarm after cleaning. It's forbidden to clean with water, cleaners or solvents as they may damage the device.



- Relocate the unit if it sounds frequent unwanted alarms. See Section 4 LOCATIONS TO AVOID for details.
- When the battery becomes weak, the smoke alarm device will sound one beep every 53 seconds (the low battery warning). You should replace to a new battery immediately to continue your protection.

PRACTICE FIRE SAFETY

- If the smoke alarm device sounds its alarm horn, and you have not pushed the test button, it is warning of a dangerous situation. Your immediate response is necessary. Prepare for such occurrences, develop family escape plans, discuss them with ALL household members, and practice them regularly.
- Expose everyone to the sound of a smoke alarm device and explain what the sound means.
- Determine TWO exits from each room and an escape route to the outside from each exit.
- Teach all household members to touch the door and use an alternate exit if the door is hot. INSTRUCT THEM NOT TO OPEN THE DOOR IF THE DOOR IS HOT.
- Teach household members to crawl along the floor to stay below dangerous smoke, fumes, and gases.
- Determine a safe meeting place for all members outside the building.

WHAT TO DO IN CASE OF A FIRE

- Don't panic; stay calm.
- Leave the building as quickly as possible. Touch doors to feel if they are hot before opening them. Use an alternate exit if necessary. Crawl along the floor, and DO NOT stop to collect anything.
- Meet at a pre-arranged meeting place outside the building.
- Call the fire department from OUTSIDE the building.
- DO NOT GO BACK INSIDE A BURNING BUILDING. Wait for the fire department to arrive.

NOTE: These guidelines will assist you in the event of a fire.
However, to reduce the chance that fires will start, practice fire safety rules and prevent hazardous situations.

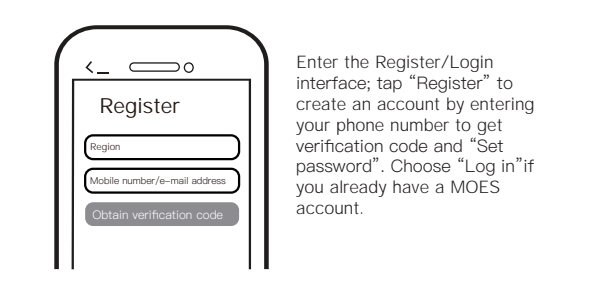
PREPARATION FOR USE

- Download MOES App on App store or scan the QR code



MOES APP is upgraded as much more compatibility than Tuya Smart/Smart Life APP functional well for scene controlled by Siri widget and scene recommendations as the fully new customized service.
(Note: Tuya Smart/Smart Life APP still works but MOES APP is highly recommended)

- Registration or Log in



Enter the Register/Login interface; tap "Register" to create an account by entering your phone number to get verification code and "Set password". Choose "Log in" if you already have a MOES account.

TROUBLESHOOTING

PROBLEM	SOLUTION
Smoke alarm device does not respond.	Please check whether the alarm is properly attached to the mounting bracket.
Red LED flashes and the alarm sounds one beep every 53 seconds.	Battery is low-REPLACE THE BATTERY OR THE ALARM
Red LED flashes twice every 53 seconds.	The alarm is malfunctioning. Please clean your smoke alarm device OR REPLACE TO A NEW SMOKE ALARM IMMEDIATELY!
Smoke alarm device sounds unwanted alarms intermittently or when residents are cooking, taking showers, etc.	1. Clean smoke alarm device. See Section 9 TESTING AND MAINTENANCE. 2. Hire an electrician to move smoke alarm device to a new location. See Section 3 WHERE TO LOCATE.

LIMITATIONS OF SMOKE ALARM DEVICES

Smoke Alarm Devices have played a key role in reducing deaths resulting from home fires worldwide. However, like any warning device, Smoke Alarm Devices can only work if they are properly located, installed, and maintained, and if smoke reaches the Alarms. They are not fireproof.
1. **Smoke alarm devices cannot work without power.**
Battery operated units cannot work if the batteries are missing, disconnected or dead. If the wrong type of batteries are used, or if the batteries are not installed correctly.
2. **Smoke alarm devices may not waken all individuals.**
Practice the escape plan at least twice a year, making sure that everyone is involved—from kids to grandparents. Allow children to master fire escape planning and practice before holding a fire drill at night when they are sleeping. If children or others do not readily waken to the sound of the smoke alarm device, or if there are infants or family members with mobility limitations, make sure that someone is assigned to assist them in fire drill and in the event of an emergency. It is recommended that you hold a fire drill while family members are sleeping in order to determine their response to the sound of the smoke alarm device while sleeping and to determine whether they may need assistance in the event of an emergency.
3. **Smoke alarm devices are not fireproof.**
Like any electronic device, smoke alarm devices are made of components that can wear out or fail at any time. You must test the unit weekly to ensure your continued protection. Smoke alarm devices cannot prevent or extinguish fires. They are not a substitute for property or life insurance.

SERVICE

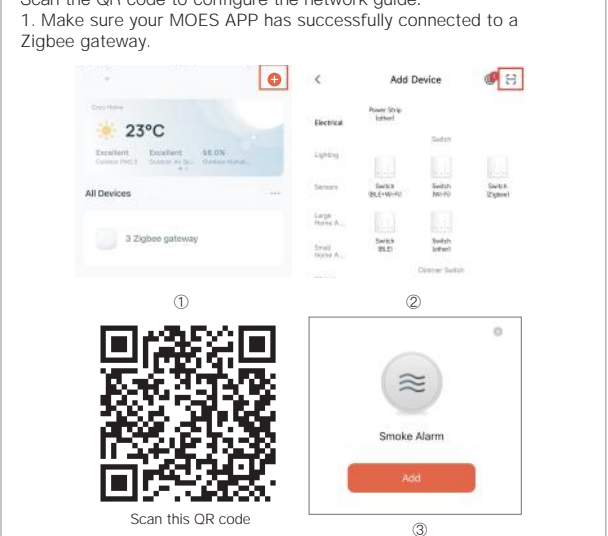
4. **Smoke alarm devices cannot detect fires if the smoke does not reach the alarms.**
Smoke from fires in chimneys or walls, on roofs, or on the other side of closed doors may not reach the sensing chamber and set off the Alarm. That is why one unit should be installed inside each bedroom or sleeping area, especially if bedroom or sleeping area doors are closed at night, and in the hallway between them.
Though the alarm horn in this unit meets or exceeds current standards, it may not be heard if: 1) the unit is located outside a closed or partially closed door. 2) residents recently consumed alcohol or drugs. 3) the alarm is drowned out by noise from stereo, TV, traffic, air conditioner or other appliances. 4) residents are hearing impaired or sound sleepers. Special purpose units, like those with visual and audible alarms, should be installed for hearing impaired residents.
5. **Smoke alarm devices may not have time to alarm before the fire itself causes damage, injury, or death, since smoke from some fires may not reach the unit immediately. Examples of this include persons smoking in bed, children playing with matches, or fires caused by violent explosions resulting from escaping gas.**
6. **Smoke alarm devices have a limited life.**
The unit should be replaced immediately if it is not operating properly. You should always replace a smoke alarm device after 10 years from date of purchase.

WARRANTY CARD

Thank you for your trust and support to our products, we will provide you with a two-year worry-free after-sales service (freight is not included), please do not alter this warranty service card, to safeguard your legitimate rights and interests. If you need service or have any questions, please consult the distributor or contact us.
Product quality problems occur within 24 months from the date of receipt, please prepare the product and the packaging, applying for after-sales maintenance in the site or store where you purchase; If the product is damaged due to personal reasons, a certain amount of maintenance fee shall be charged for repair.
We have the right to refuse to provide warranty service if:
1. Products with damaged appearance, missing LOGO or beyond the service term
2. Products that are disassembled, injured, privately repaired, modified or have missing parts
3. The circuit is burned or the data cable or power interface is damaged
4. Products damaged by foreign matter intrusion (including but not limited to various forms of fluid, sand, dust, soot, etc.)

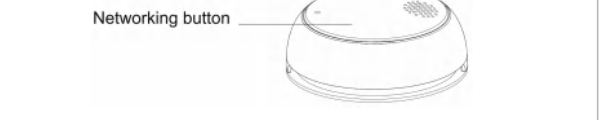
STEPS FOR CONNECTING THE APP TO THE DEVICE

Ensure the device is within the effective signal coverage of your smart ZigBee gateway for successful connection into the ZigBee gateway in MOES APP.
Method One:
Scan the QR code to configure the network guide.

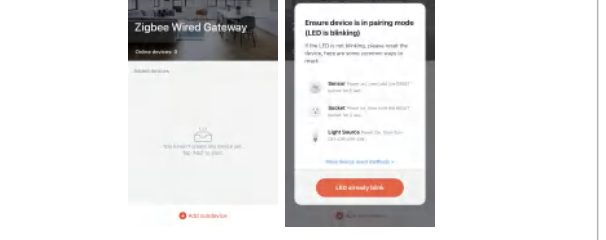


Method Two:
1. Open the APP, select a gateway you are actually using, and click "+" on my gateway page to add ZigBee device, and continue the following steps according to the APP-prompt until the network connection succeeds.

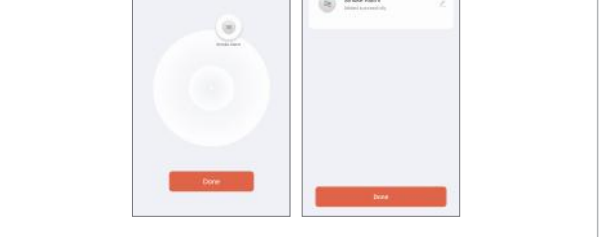
- Network inclusion: Press the networking button three times in quick succession, and green LED indicator will start to flash, indicating that the device is connecting to the network. Later the green LED indicator will keep on for 1 seconds and go off, and APP prompts that the networking is successful.



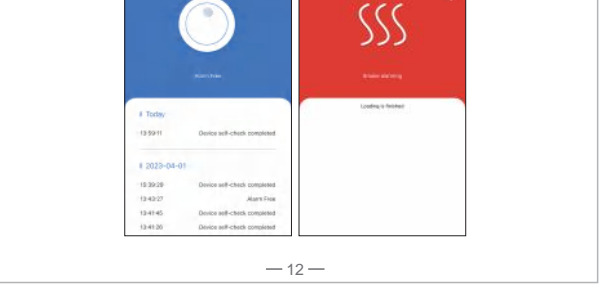
- Enter the gateway: Please follow the picture below to finish as "Add subdevice" - LED already blink, and the connecting will take about 10-120 seconds to complete depending on your network condition.



- Add the device successfully: you can edit the name of the device to enter the device page by click "Done".



- Click "Done" to enter the device page to enjoy your smart life with home automation.



RECYCLING INFORMATION

All products marked with the symbol for separate collection of waste electrical and electronic equipment (WEEE Directive 2012/19 / EU) must be disposed of separately from unsorted municipal waste. To protect your health and the environment, this equipment must be disposed of at designated collection points for electrical and electronic equipment designated by the government or local authorities. Correct disposal and recycling will help prevent potential negative consequences for the environment and human health. To find out where these collection points are and how they work, contact the installer or your local authority.

DECLARATION OF CONFORMITY

Hereby, WENZHOU NOVA NEW ENERGY CO., LTD declares that the radio equipment type ZS-SR-EUD is in compliance with Directive 2014/53/EU, 2014/30/EU, 2011/65/EU. The full text of the EU declaration of conformity is available at the following internet address:
<https://www.moestech.com/blogs/news/zss-hm-ssd01>

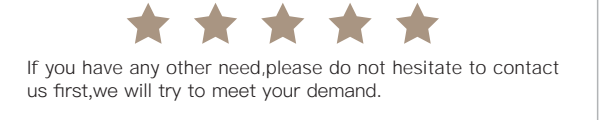
WARRANTY CARD

Product Information
Product Name _____
Product Type _____
Purchase date _____
Warranty Period _____
Dealer Information _____
Customer's Name _____
Customer Phone _____
Customer Address _____

Maintenance Records

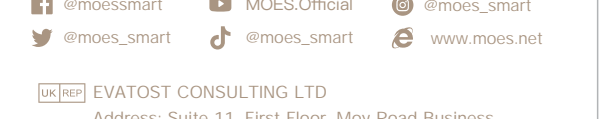
Failure date	Cause Of Issue	Fault Content

Thank you for your support and purchase at we Moes, we are always here for your complete satisfaction, just feel free to share your great shopping experience with us.



If you have any other need, please do not hesitate to contact us first, we will try to meet your demand.

FOLLOW US



EVATOST CONSULTING LTD
Address: Suite 11, First Floor, Moy Road Business Centre, Taffs Well, Cardiff, Wales, CF15 7GR
Tel: +44-292-1680945
Email: contact@evatimaster.com

E-CrossStu-GmbH
Mainzer Landstr. 69, 60329 Frankfurt am Main
Email: E-crossstu@web.de
Tel: +4969332967674
Made in China

Manufacturer:
WENZHOU NOVA NEW ENERGY CO., LTD
Address: Power Science and Technology Innovation Center, NO.238, Wei 11 Road, Yueqing Economic Development Zone, Yueqing, Zhejiang, China
Tel: +86-577-57186815
After-sale Service: service@moeshouse.com