

BHT-3000 Series Thermostat

User Guide



UK REP EVATOST CONSULTING LTD
Address: Suite 11, First Floor, Moy Road
Business Centre, Taffs Well, Cardiff, Wales,
CF15 7QR
Tel: +44-292-1680945
Email: contact@evatmaster.com

EC REP AMZLAB GmbH
Laubenhof 23, 45326 Essen
Made in China

Manufacturer:
YUEQING NOVA ELECTRONICS CO.,LTD
Address: 3th Floor, Building 2, Power Science and Technology Innovation Center,
NO.238, Wei 11 Road, Yueqing Economic Development Zone, Yueqing, Zhejiang,
China
Tel: +86-577-62625592
After-sale Service: service@moesgo.com

For Water Heating/Boiler/Electric Heating Welcome WIFI Type

Your new thermostat will provide uniform and comfortable temperature control throughout every room in your property. We combine the technology, craftsmanship and the highest quality materials together to provide you a safe, reliable product with sleek and contemporary design.

Please read this installation/programming manual for comprehensive instructions on installing and operating your thermostat. Please also ensure a suitably qualified person to install your thermostat and comply with all local regulations.

In the box you will find

Thermostat 1pc Screws 2pc
User Guide 1pc Floor Sensor (2.5m) 1pc

QC Passed 1pc
(This accessory is suitable for GB, not included in the package and needs to be purchased separately)

ABOUT YOUR THERMOSTATS

The BHT-3000 range has been developed to control electric underfloor, water heating or water/gas boiler systems. These units are designed for use in commercial, industrial, civil and domestic properties.

MODEL DEFINITION

GA: Water heating, 5A
GB: Electric floor Heating, 16A
GC: Water/Gas Boiler, Dry contract 5A
L: Backlight
P: Weekly Programmable
N: Modbus Communication
W: Wifi
S2: Both internal sensor and floor external sensor
For example: BHT-3000 GCLP

FEATURES

On Appearance

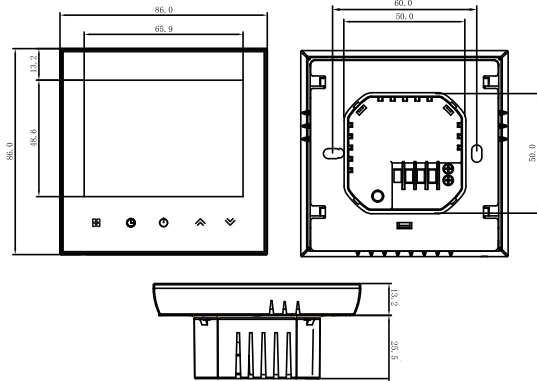
1. Negative black screen and colorful icon will bring you a secret world.
2. 65.9*48.6 mm display area helps to protect your eyes.
3. Glass or Acrylic Lens is for your selection.
4. Touch buttons to make simple operation.
5. Amazing Silver Frame opens your modern life.
6. The visible thickness above the wall is only 13 mm.
7. Interlock to connect gives you easy installation.
8. 86mm hidden box and european 60mm round box is suitable.
9. White, black or gold housing creates your colorful life.

On Functionality

1. Powerful functions are available such as Modbus/WIFI etc.
2. 0.5°C Accuracy keeps temperature within the level you set.
3. Data memory when power is off.
4. 5+1+1 six periods programmable maximize comfort and economy.
5. Create thermostat group to Centralized control
6. Integrate with **Amazon Echo, Google Home, Tmall Genie.**
7. All setting languages synchronize your time zone, address and language.
8. No limit to add rooms and support Smart Scene.

DIMENSION

Unit: mm



TECHNICAL DATA

Power Supply: 95 ~ 240 VAC, 50 ~ 60HZ
Current Load: 5A (water heating/water boiler/gas boiler)
16A (electric heating)

Sensor: NTC3950, 10K
Accuracy: ±0.5°C
Set Temp. Range: 5 ~ 35°C
Display Temp. Range: 5 ~ 99°C
Ambient Temp.: 0 ~ 45°C
Ambient Humidity: 5 ~ 95 % RH (Non Condensing)
Storage Temp.: -5 ~ 45 °C
Power Consumption: <1.5W
Timing Error: < 1%
Shell Material: PC +ABS (Fireproof)
Installation Box: 86*86mm Square or European 60mm Round Box
Wire Terminals: Wire 2 x 1.5 mm² or 1 x 2.5 mm²
Protection Class: IP 20
Buttons: Capacitive Touch Buttons

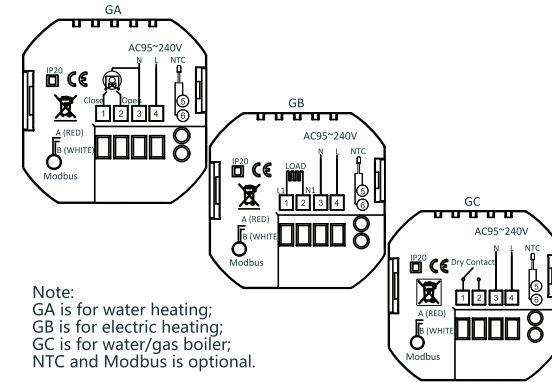
BEFORE WIRING AND INSTALLING

1. Read these instructions carefully. Failure to follow them could damage the product or cause a hazardous condition.
2. Check the ratings given in the instructions and on the product to make sure the product is suitable for your application.
3. Installer must be a trained, experienced service technician.
4. After installation is complete, check out product operation as provided in these instructions.

CAUTION

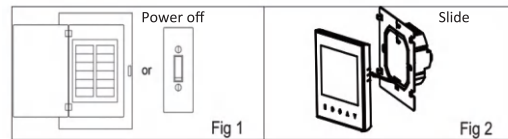
Electrical Shock or Equipment Damage Hazard. can shock individuals or short equipment circuitry. Disconnect power supply before installation.

WIRING

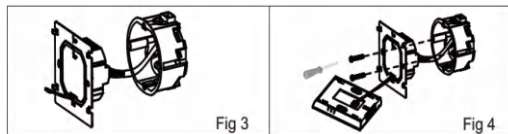


INSTALLATION

Your thermostat is suitable for installation within a standard 86mm pattress box or European 60mm pattress box.
Step 1. Keep power off. See Fig 1.
Step 2. Slide the LCD assembly down to remove the mounting plate. See Fig 2.

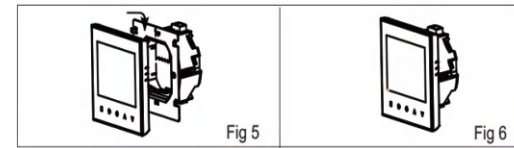


Step 3. Connect power supply, load into the appropriate terminals. (see "Wiring your thermostat" for details and Fig 3).
Step 4. Fix the mounting plate into the wall with screws in the box. See Fig 4.

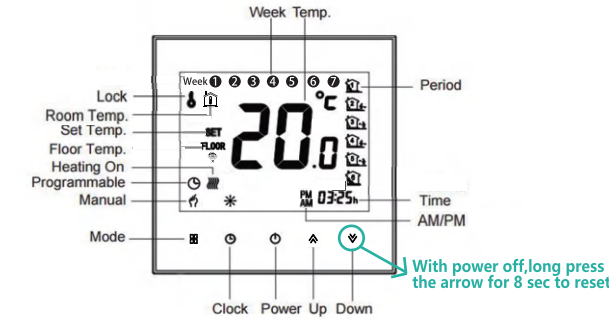


Step 5. Fasten body of thermostat and the mounting plate through rotating. See Fig 5.

Step 6. Installation complete. See Fig 6.



HOME SCREEN QUICK REFERENCE



OPERATION

During Power On

1. Power On/off: Press to turn the thermostat on/off.

2. Manual & Programmable

Touch (mode) to change between manual mode and programmable mode. In manual mode, will show in the bottom left of the screen. In programmable mode, the period icon will show in the right side.

3. Setting Temperature

In the programmable mode, time and set-point could not be adjusted. If the user want to change, please go to manual mode or programmable setting. In the mode of manual, press to set the desired temperature.

4. Adjusting/Setting the Clock

Touch the icon to set minute, hour and weekday (1 = Monday, 2 = Tuesday etc.) by using the arrows. Press once more to confirm and exit

5. Locking your Thermostat

Press and hold the for 5 seconds to lock/unlock your thermostat. In item 3 of high senior options, you can select full lock or half lock.

6. Adjusting/Setting the Program Schedules

When Wi-Fi connection is made, your thermostat will automatically accept the program schedule made via the APP on your device (see below for detailed instructions). If you want to set the program schedules through your thermostat, simply follow the instructions as below:

Please note: Setting the program schedule through your thermostat can only be carried out when there is no WiFi connection between your thermostat and smartphone/tablet.

Touch to change between manual mode and programme mode. In manual mode, will show in the bottom left of the screen. In programmable mode, touch and hold the icon until the weekday

schedule settings appear (1 2 3 4 5 will show along the top of the screen). Use the and arrows to adjust the on time. Press the icon and use the and arrows to set the off time (2nd period). Press the icon and use the and arrows to set the temp. Repeat this process for periods 3 4 and 5 6. Press the icon once more to enter the Saturday schedule settings (6 will show along the top of the screen). Repeat the above process to set the period, temp. and Sunday schedule. Press once more to confirm and exit.

Default settings for program schedule

Time display	WEEKDAY(MONDAY-FRIDAY) (1 2 3 4 5 shows on screen)		WEEKEND(SATURDAY) (6 shows on screen)		WEEKEND(SUNDAY) (7 shows on screen)	
	TIME	TEMPERATURE	TIME	TEMPERATURE	TIME	TEMPERATURE
Period 1	06:00	20 °C	06:00	20 °C	06:00	20 °C
Period 2	08:00	15 °C	08:00	20 °C	08:00	20 °C
Period 3	11:30	15 °C	11:30	20 °C	11:30	20 °C
Period 4	13:30	15 °C	13:30	20 °C	13:30	20 °C
Period 5	17:00	22 °C	17:00	20 °C	17:00	20 °C
Period 6	22:00	15 °C	22:00	15 °C	22:00	15 °C

A separate schedule may be set for weekdays (Mon – Fri) and for weekends (Sat or Sun).

7. Checking the Temperature of Floor Sensor

Press and hold the arrow for 5 seconds to display the temp. of floor sensor.

Setting the Functions and Options

In order to reach system function, turn the thermostat off. Press and hold and at the same time for 5 secs. Then press to scroll through the available functions. Use the and arrows to change the available options. All settings are confirmed automatically.

Code	Function	Setting and options	Default
1	Temperature compensation	-9 to +9 °C (for internal sensor)	-1
2	Deadzone Temperature	1-5 °C	1
3	Button Locking	00: All buttons are locked except power button. 01: All buttons are locked	01
4	Sensor Types	In: Internal Sensor (to control the temp.) Ou: External Sensor (to control the temp.) AL: Internal/ External Sensor (Internal sensor to control the temp., external sensor to limit the temp.)	AL
5	Min. Set Temp.	5-15 °C	05
6	Max. Set Temp.	15-45 °C	35
7	Display Mode	00: Display both set temp. and room temp. 01: Display set temp. only	00
8	Low Temperature Protection Setting.	0-10 °C	00
9	High Temperature Protection Setting.	25-70 °C	0
A	Economy Mode	00: Non-energy saving Mode 01: Energy saving mode	45
B	Economy Temp.	0-30 °C	20
C	Standby Brightness	3-99	20

ABOUT WIFI

WI-FI CONNECTION

When first time using Wi-Fi thermostat, you must configure the Wi-Fi signal and settings on your smartphone or tablet. This will allow communication of your connected devices.

Step 1. Download your APP

1. APP Download MOES

MOES APP is upgraded as much more compatibility than Tuya Smart/Smart Life APP, functional well for scene controlled by Siri, widget and scene recommendations as the fully new customized service. (Note: Tuya Smart/Smart Life APP still works, but MOES APP is highly recommended)



*Please scan the QR code or download MOES on App store.

2. Register or Log in

Enter the Register/Login interface; tap "Register" to create an account by entering your phone number to get verification code and "Set password". Choose "Log in" if you already have a MOES account.



Step 2. Connect the thermostat

Check the tutorial below to complete the connection and setup.

Method 1: Scan the QR code to configure the network guide (Fig 2.1-Fig 2.3)

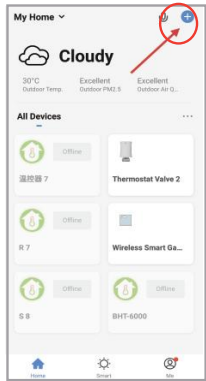


Fig2.1

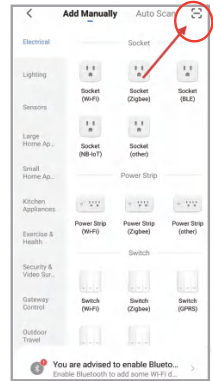


Fig2.2



Scan this QR code



Fig2.3

Method 2: Ordinary distribution network guidance (Fig. 2. 1&Fig. 2.3.1)

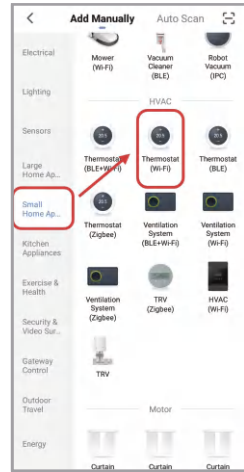


Fig2.3.1

Network distribution mode:

1. EZ Mode

When the thermostat is off, press and hold the "EZ" until the thermostat screen flashes quickly and displays the "EZ" icon, and then operate according to the following figure (Fig 2.4-Fig 2.7).

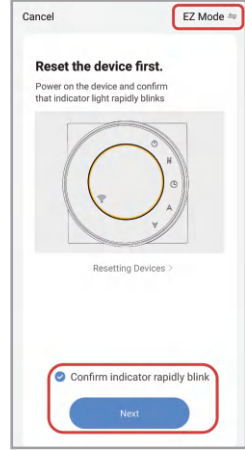


Fig2.4

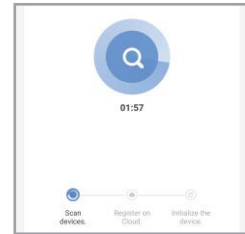


Fig2.6

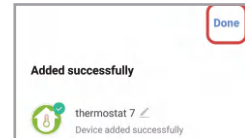


Fig2.7

2.AP Mode

When the thermostat is off, press and hold the "AP" until the thermostat screen flashes slowly and the "AP" icon appears. (if the "Wi-Fi" icon appears, continue to press the "AP" until the thermostat screen flashes slowly and displays the "AP" icon), and then operate according to the following figure (Fig 2.8-Fig 2.14)

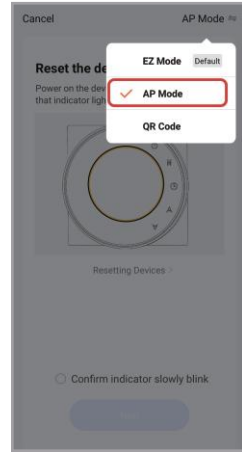


Fig2.8

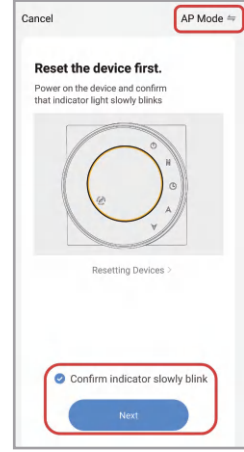


Fig2.9



Fig2.10

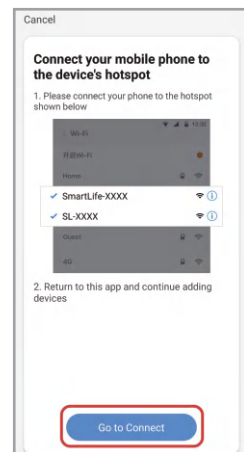


Fig2.11

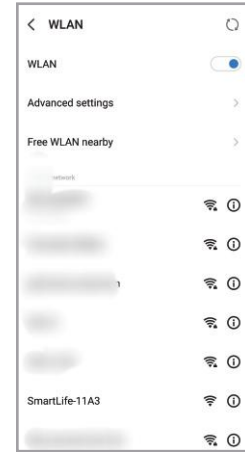


Fig2.12

After connecting to this hotspot, return to the "smartlife" APP

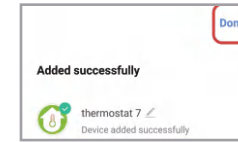


Fig2.14

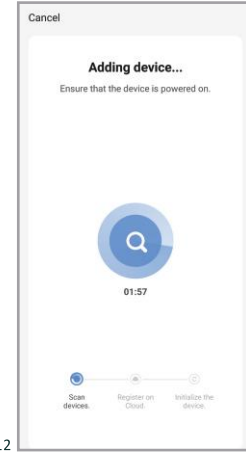
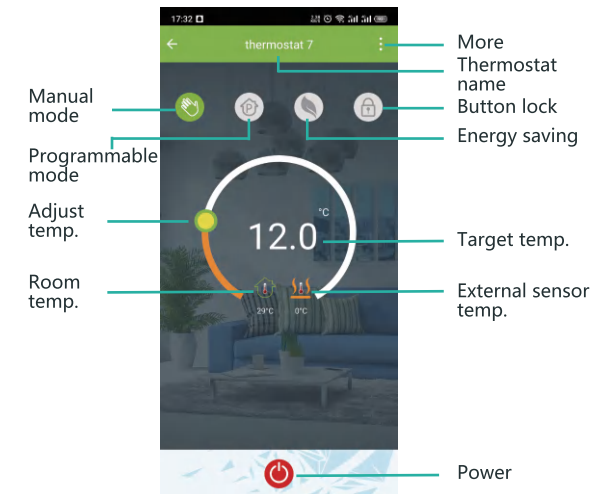


Fig2.13

APP OPERATION INTERFACE DESCRIPTION (HEATING THERMOSTAT)



Manual mode

Programmable mode

Adjust temp.

Room temp.

More Thermostat name

Button lock

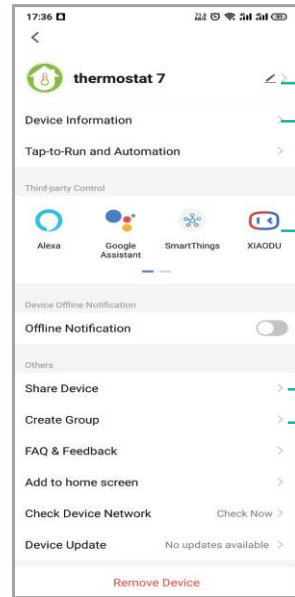
Energy saving

Target temp.

External sensor temp.

Power

MORE SETTINGS



Modify the name of the thermostat

View the virtual ID of the thermostat

Connect smart voice audio guide

Share the thermostat with your family

Group multiple thermostats for management

SIMPLE EXCEPTION HANDLING

No.	Phenomenons	Handling
1	Power is on but without display.	* Check if the terminals between LCD panel and Power Unit Box is loosen.
2	Without output but display works.	* Use a new LCD panel or new Power Unit Box to replace the old one.
3	Room temp is different from the real temp	* Please follow Item 1 of high senior option to do temperature calibration.

SERVICE

24-months warranty since date of purchase
Service beyond the warranty period may need charge. More details, please contact us.