

Instruction Manual Smart Bead Chain Blinds Motor



English



WC-YH-LS-MS-DC28

- Bitte scannen Sie den QR-Code, um das deutsche Handbuch, das Installationsvideo und die Funktionseinführung zu erhalten.
• Escanee el código QR para obtener el manual en español, el video de instalación y la introducción de la función.
• Veuillez scanner le code QR pour obtenir le manuel en français, la vidéo d'installation et l'introduction des fonctions.
• Отсканируйте QR-код, чтобы получить руководство на русском языке, видео по установке и введение в эксплуатацию.
• Scansionare il codice QR per ottenere il manuale in italiano, il video di installazione e la guida alle funzionalità.
• Leia o código QR para obter o manual em português, o vídeo de instalação e a introdução das funções.
• Zeskanuj kod QR, aby uzyskać instrukcję, filmy instalacyjne i funkcje.
• من فضلكم ارمز بـ QR كود للحصول على دليل المستخدم باللغة العربية وفديو التثبيت ووصف الوظائف.



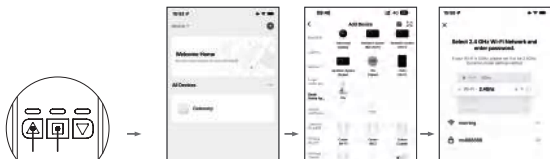
- Character
1. No change of existing blinds, no tubular motor. One touch, manual to motor;
2. WiFi connector, work with Alexa, Amazon etc directly;
3. Schedule: Setting open and close time as your like, open when sun rise, and close when sunset
4. Long distance : open or close your home blinds on office or business with Wifi on;
5. Easy mounting and setting, 3-5 minutes DIY on your fingertip position;
6. Control: Mobile and remote both can ;

Product description
"Wifi Rope Motor" is a product that combines modern wireless technology with motor technology. This kind of motor usually has a WiFi communication function, which allows users to remotely control and monitor the operating status of the motor through a wireless network. Rope motors are often used in applications that require precise position control and tension adjustment, such as curtains, awnings, projectors, etc.

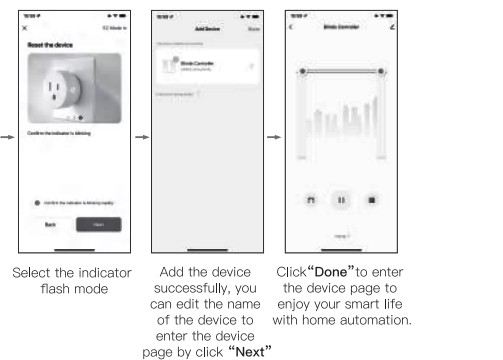
- Safety notice
1. Do not disassemble, reassemble, modify or attempt to repair this product by yourself. This work should be performed by authorized professionals.
2. This product is not designed to be recycled and must be recycled or disposed of separately from household waste. Dispose of batteries according to local environmental regulations.

1 Device In Pairing Mode For Network Discover. Includes QR code and app icon.

- 1. Search and download "MOES" in major application markets or scan the "QR code" below to download the App.
2. OPEN MOES, and connector with motor;

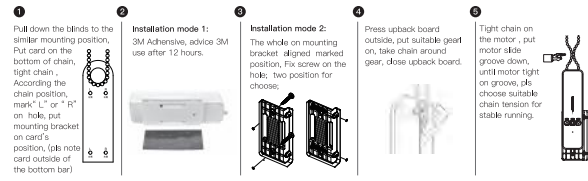


Push the Up Arrow (left button) & Stop Button (middle butt on) until Up Arrow starts flashing in blue (about 5 ~ 8 seconds). "confirm indicator rapidly blink" in mobile.



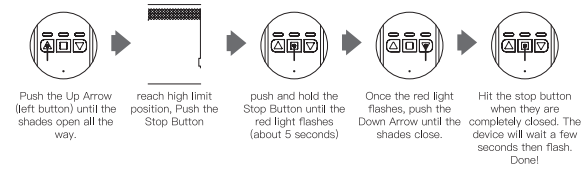
Note:
1) The motor will not respond after APP connector until step 4 is setting.
2) PLS make sure that the trip setting is prior to any APP control of motor.
Photo 1 Suitable gear and chain

2 Mounting



Note: PLS be sure use the suitable gear for the chain, and adjust the tension, otherwise will noisy.

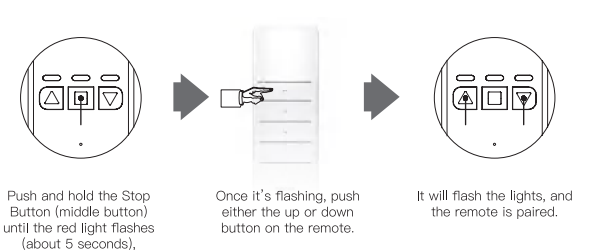
3 Set Limits On The Device



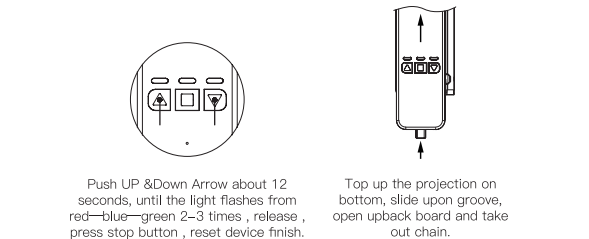
Now, when you hit the open, it will open them to the point that you set for opening, and close them to the point that you set for closing. (can also setting from close to open). Note: If trip change for some user, pls reset .

4 Function Setting

- 1 Schedule: Can setting time as you like , Open when sunrise and close when sunset.
2 APP: MOES, it's connector with a motor.
3 Connector with google Alexa etc
MOES -> Welcome home -> me -> more service -> Alexa , google Assistant , Roku, etc.
4 Device pair not only with mobile , but also remote



5 Reset And Take Down Device



Parameters table with columns: Name, Torque, Frequency, Max Blinds Size, Compatible, Model, Speed, Voltage, Max Weight, Control Method, Rated Current, Distance, MOBLE or REMOTE.

6 Troubleshooting

If you have problems installing or operating your device, please review its product data sheet: https://www.moestech.com/blogs/news/wc-yh-ls

7 Control your home with your voice

Devices are compatible with Amazon Alexa and Google Home supported functionalities. Please see our step-by-step guide at: https://www.moestech.com/blogs/news/smart-device-linked-voice-speaker

8 Declaration of conformity

Hereby, WENZHOU NOVA NEW ENERGY CO.,LTD declares that the radio equipment type WC-YH-LS is in compliance with Directive 2014/53/EU, 2014/30/EU, 2011/65/EU. The full text of the EU declaration of conformity is available at the following internet address: https://www.moestech.com/blogs/news/wc-yh-ls

9 SERVICE

Thank you for your trust and support to our products, we will provide you with a two-year worry-free after-sales service (freight is not included), please do not alter this warranty service card, to safeguard your legitimate rights and interests. If you need service or have any questions, please consult the distributor or contact us. Product quality problems occur within 24 months from the date of receipt, please prepare the product and the packaging, applying for after-sales maintenance in the site or store where you purchase; If the product is damaged due to personal reasons, a certain amount of maintenance fee shall be charged for repair.

10 RECYCLING INFORMATION

All products marked with the symbol for separate collection of waste electrical and electronic equipment (WEEE Directive 2012/19 / EU) must be disposed of separately from unsorted municipal waste. To protect your health and the environment, this equipment must be disposed of at designated collection points for electrical and electronic equipment designated by the government or local authorities. Correct disposal and recycling will help prevent potential negative consequences for the environment and human health. To find out where these collection points are and how they work, contact the installer or your local authority.

11 WARRANTY CARD

Warranty card form with fields for Product Information, Purchase date, Warranty Period, Dealer Information, and Maintenance Records.

Gebruiksaanwijzing (Deutsch)
Beschreibung des Produkts
1 Gerät im Kopplungsmodus für Netzwerkerkennung
2 Montage
3 Beschränkungen für das Gerät festlegen
4 Konformitätserklärung

Manual de instrucciones (Español)
Descripción del producto
1 Dispositivo en modo de emparejamiento para detectar la red
2 Montaje
3 Establecer límites en el dispositivo
4 Declaración de conformidad

Manuel d'instruction (Français)
Description du produit
1 Appareil en mode appairage pour la découverte du réseau
2 Montage
3 Fixer des limites à l'appareil
4 Déclaration de conformité

Manuale di istruzioni (Italiano)
Descrizione del prodotto
1 Dispositivo in modalità di accoppiamento per la scoperta della rete
2 Montaggio
3 Impostare limiti sul dispositivo
4 Dichiarazione di conformità

Manual de Instruções (Português)
Descrição do produto
1 Dispositivo em modo de emparelhamento para descoberta de rede
2 Montagem
3 Definir limites no dispositivo
4 Declaração de conformidade

Manual de Instruções (Português)
Descrição do produto
1 Dispositivo em modo de emparelhamento para descoberta de rede
2 Montagem
3 Definir limites no dispositivo
4 Declaração de conformidade