

Smart Light Bulb

User Manual



WB-TDA14-RCW-E27-MS-CM18

- Bitte scannen Sie den QR-Code, um das deutsche Handbuch, das Installationsvideo und die Funktionsein-führung zu erhalten
- Escanee el código QR para obtener el manual en español, el video de instalación y la introducción de la función
- Veuillez scanner le code QR pour obtenir le manuel en français, la vidéo d'installation et l'introduction des fonctions
- Отсканируйте QR-код, чтобы получить руководство на русском языке, видео по установке и описание функций
- Scansionare il codice QR per ottenere il manuale in italiano, il video di installazione e la guida alle funzionalita. Video di installazione e funzionalita
- Leia o código QR para obter o manual em português, o vídeo de instalação e a introdução das funções
- Zeskanuj kod QR, aby uzyska instrukcje, filmy instalacyjne i funkcje
- من فضلك قم ب مسح رمز الاستجابة المبرومة (QR-code) للحصول على دليل المستخدم باللغة العربية وفيديو التثبيت ووصف الوظائف



请扫描二维码获取中文的说明书、安装视频及功能介绍

Important information

- ◆ It is recommended that the fittings are installed by a qualified electrician ensuring the installation complies with current IEE wiring regulations & local building control.
- ◆ Always switch off mains supply before installation.

MOES APP Instructions

- ① Download MOES App on App store or scan the QR code



MOES App is upgraded as much more compatibility than Tuya Smart/Smart Life App, functional well for scene controlled by Siri, widget and scene recommendations as the fully new customized service. (Note: Tuya Smart/Smart Life App still works, but MOES App is highly recommended)

- ② Registration or Log in.
 - Download "MOES" Application.
 - Enter the Register/Login interface; tap "Register" to create an account by

2

English

English

3

entering your phone number to get verification code and "Set password". Choose "Log in" if you already have a MOES account.

1. Add lamp to MOES APP

– Tap the icon "+" on the top corner of "My device" page, choose your device type – Light Source(BLE+ Wi-Fi), then follow the instructions in the APP to connect the lamp.

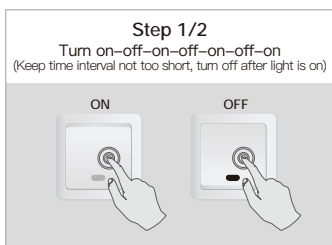


4

English

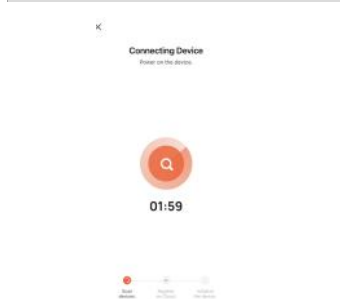
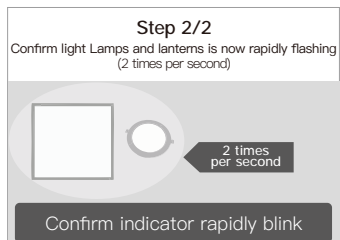
2. The lamp needs to be set to flash rapidly.

Please follow the 2 steps below:



5

English



3. After connection, the lamp will appear in your list and you can control it from anywhere in the world. You can also rename the lamp and group more lamps.

Compatible with Amazon Alexa and Google Home

6

Declaration of conformity

Hereby, WENZHOU NOVA NEW ENERGY CO.,LTD declares that the radio equipment type WB-TDA14-RCW-E27 is in compliance with Directive 2014/53/EU, 2014/35/EU, 2014/30/EU, 2011/65/EU. The full text of the EU declaration of conformity is available at the following internet address: <https://www.moestech.com/blogs/news/wb-tda14-rcw-e27>

Thank you for your support and purchase at we Moes, we are always here for your complete satisfaction, just feel free to share your great shopping experience with us.



If you have any other need, please do not hesitate to contact us first, we will try to meet your demand.

7

English

English

FOLLOW US

- @moessmart
- @moes_smart
- @moes_smart
- MOES.Official
- @moes_smart
- www.moes.net

UK REP EVATOST CONSULTING LTD
Address: Suite 11, First Floor, Moy Road Business Centre, Taffs Well, Cardiff, Wales, CF15 7QR
Tel: +44-292-1680945
Email: contact@evatmaster.com

EC REP E-CrossStu-GmbH
Mainzer Landstr. 69 ,60329 Frankfurt am Main
Email: E-crossstu@web.de
Tel: +4969332967674
Made in China

Manufacturer:
WENZHOU NOVA NEW ENERGY CO.,LTD
Address:
Power Science and Technology Innovation Center, NO.238, Wei 11 Road, Yueqing Economic Development Zone, Yueqing, Zhejiang, China
Tel: +86-577-57186815
After-sale Service:
service@moeshouse.com

8

9