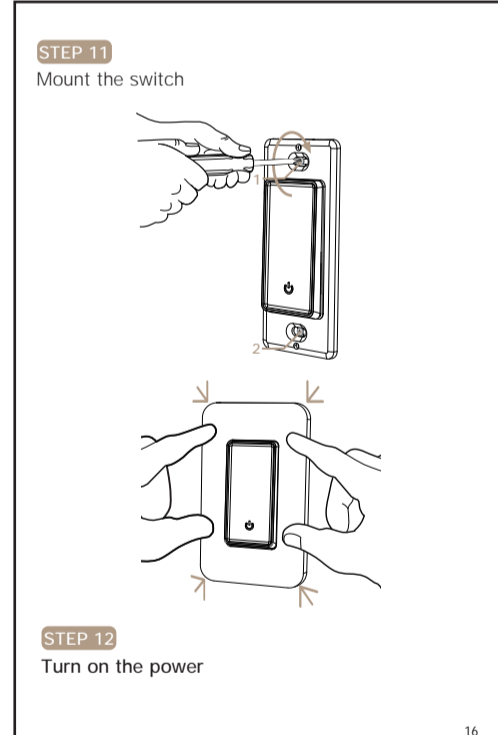


02 Indicator Light Status

Light Color	Light Status	Switch Status	Remarks
	ON	Power ON(Default)	Support Self-definition on APP
	OFF	Power OFF(Default)	
Green	Blink Quickly (0.5s)	Ready for default configuration mode	
	Blink Slowly (1s)	Ready for AP (Access Point) configuration mode	



03 Specification

Input Power	100-120V AC 60Hz
Control	Relay
Communication: Available for selected model	WiFi 802.11 b/g/n 2.4GHz Zigbee 3.0**
	BLE MESH 2.4GHz**
Max Current	10A
Standby Power	<0.5W
Button Life	500K times
Dimension	105*45*42.5 mm

** Zigbee model must use with Zigbee 3.0 Gateway to access internet
** BLE MESH model must use with BLE MESH 2.4GHz** Gateway to access internet

Recommended loads:
Incandescent/halogen up to 1000W
LED up to 350W
Motor up to 0.6 HP

04 Contents Supplied

05 Safety Information

WARNING: RISK OF ELECTRIC SHOCK
Electricity can cause personal injury and property damage if handled improperly. If you are not sure about any part of these instructions, please seek professional assistance from a qualified electrician. Ensure all work meets applicable local and national codes.

Tools you'll need:
Phillips-head screwdriver
Flat-head screwdriver
Wire cutters
Pliers
Voltage tester

06 Installation

30min Approximately 30 minutes to install and setup the switch

08 Reset

Press and hold Switch button for 8s until indicator flashing to reset the Switch and get into quick configure mode

STEP 1 Turn Off Power

Locate your circuit breaker panel and turn off the power to each switch you are replacing.

STEP 2 Remove the switch and pull it away from the wall.

STEP 3 Verify Power is Off

We recommend you to remove the faceplate from the old switch and use an electrical tester to test all wires connected to the switch to ensure there is no voltage in the circuit.
You may need to turn off more than one circuit breaker.

STEP 4 Pull Out Old Switch

09 Smart Life Skills (Alexa)

Search "Smart Life" and select the right one according to the blue logo (same with App)

STEP 5 Identify The Old Switch

A Single Pole Switch
Only one switch control one light or a bundle of lights.

B 3-Way Switch
Two switches control the same light or the same bundle of lights.

STEP 6 Identify Line/Load Wire

Note: The color of your wire may be different from the color shown in the manual.
LINE/LOAD wire (usually BLACK, attached with a black screw, and may be Remarkd "common")

A Single Pole Switch

B 3-Way Switch

STEP 7 Find the NEUTRAL Wires

Neutral wire is required to install the smart light switch. Most likely a bundle of one or more white wires in the wall.

Note: If there is no neutral, please try another location or call an electrician for help.

STEP 8 Test NEUTRAL and GROUND Wires
Make sure there is no power on the neutral wires from neighborhood. If necessary, shut off additional circuits until no voltage is found.
GROUND wires are usually BARE COPPER or GREEN.

STEP 9 Take Pictures of the Wiring

Loosen the screw terminals and remove the old switch.

10 Smart Life Skills (Google)

Find "Home Control" in the hamburger menu on the Google Home app's home page > Home Control > tap "-".

STEP 10 Wire the Smart Switch

Note: For more detailed content, please watch the wiring video on product page.

Single Pole Wiring Diagram

STEP 11 Single Pole Wiring Diagram (3-Way Model)

3-Way Wiring Diagram

Replace ONE of your REGULAR 3-WAY SWITCHES with SMART SWITCH

STEP 12 Add the Switch to APP

Preparation: Ensure the switch has connected with electricity; ensure your phone has connected to Wi-Fi router and is able to connect to the internet.

Note: Zigbee and BLE MESH versions have slightly different to access the APP. Please make sure that the corresponding gateway is online, and then select the applicable gateway to add the switch(es).

After the user login, tap the "+" icon on the top right corner to add device, select the "switch" menu and choose the switch device icon.

09 Smart Life Skills (Alexa)

The Account is linked successfully, and then tap Authorize to Complete.

Congratulations! Alexa Devices (Echo) can Control the Switch ON/OFF.

To add or delete switches, please delete or add them in the Smart Life App (See Part 2) and then the Alexa will synchronize automatically if you cannot see the name of switches in the Devices List in Alexa Page; you can click "Discover" in Alexa page will synchronize from the Smart Life App.

STEP 13 3-Way Wiring Diagram

Replace BOTH of your REGULAR 3-WAY SWITCHES with SMART SWITCHES

STEP 14 Not Working Situation

STEP 15 IC Caution

This device complies with Industry Canada license-exempt RSS standard(s).
Operation is subject to the following two conditions:
(1) This device may not cause interference, and
(2) This device must accept any interference, including interference that may cause undesired operation of the device.

Le présent appareil est conforme aux CNR d'Industrie Canada applicables aux appareils radio exempts de licence.
L'exploitation est autorisée aux deux conditions suivantes:
(1) l'appareil ne doit pas produire de brouillage, et
(2) l'utilisateur de l'appareil doit accepter tout brouillage radioélectrique subi, même si le brouillage est susceptible d'en compromettre le fonctionnement.

This equipment complies with IC radiation exposure limits set forth for an uncontrolled environment. This equipment should be installed and operated with minimum distance 20cm between the radiator & your body.

STEP 16 Turn on the power

The light(s) may flash once during smart switch first time power up

07 Add Devices

STEP 1 Download Smart Life APP

STEP 2 Register and login

STEP 17 FCC Caution

This device complies with part 15 of the FCC Rules. Operation is subject to the following two conditions:
(1) This device may not cause harmful interference, and
(2) this device must accept any interference received, including interference that may cause undesired operation.

15.21 Information to user
Any Changes or modifications not expressly approved by the party responsible for compliance could void the user's authority to operate the equipment.

15.105 Information to the user
Note: This equipment has been tested and found to comply with the limits for a Class B digital device, pursuant to part 15 of the FCC Rules. These limits are designed to provide reasonable protection against harmful interference in a residential installation. This equipment generates uses and can radiate radio frequency energy and, if not installed and used in accordance with the instructions, may cause harmful interference to radio communications. However, there is no guarantee that interference will not occur in a particular installation. If this equipment does cause harmful interference to radio or television reception, which can be determined by turning the equipment off and on, the user is encouraged to try to correct the interference by one or more of the following measures:
-Reorient or relocate the receiving antenna.
-Increase the separation between the equipment and receiver.
-Connect the equipment into an outlet on a circuit different from that to which the receiver is connected.
-Consult the dealer or an experienced radio/TV technician for help.

This equipment complies with FCC radiation exposure limits set forth for an uncontrolled environment. This equipment should be installed and operated with minimum distance 20cm between the radiator & your body.

STEP 18 Troubleshooting

- Make sure you have good Wi-Fi signal strength at the location of the switch.
- Mikrotik box and MATEL Surface-wall board may block Wi-Fi signal
- Make sure input correct Wi-Fi password

STEP 19 Remark

Smart phone and device must connect to same Wi-Fi during setup mode. The device must be added to the account before it can be controlled remotely. After the device is successfully accessed, other users can obtain control of the product through the sharing function.

STEP 20 Follow Us

WENZHOU NOVA NEW ENERGY CO.,LTD
Address: Power Science and Technology Innovation Center, No.228, Wei 11 Road, Yangling Economic Development Zone, Yangling, Zhejiang, China
Tel: +86-571-57188815
Email: service@moeshouse.com
AMZLAB GmbH
Ludwigshafen 23, 45300 Essen
Made in China

STEP 21 Thank you for your support and purchase at we Moes, we are always here for your complete satisfaction just feel free to share your great shopping experience with us.

If you have any other need, please do not hesitate to contact us, we will try to meet your demand.