

Bluetooth Temperature Humidity Sensor

Product manual

- Bitte scannen Sie den QR-Code, um das deutsche Handbuch, das Installationsvideo und die Funktionseinführung zu erhalten
- Escanee el código QR para obtener el manual en español, el video de instalación y la introducción de la función
- Veuillez scanner le code QR pour obtenir le manuel en français, la vidéo d'installation et l'introduction des fonctions
- Отсканируйте QR-код, чтобы получить руководство на русском языке, видео по установке и описание функций
- Leia o código QR para obter o manual em português, o vídeo de instalação e a introdução das funções



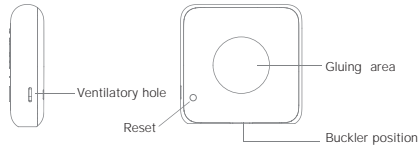
请扫描二维码获取中文的说明书、安装视频及功能介绍

Product Introduction

Bluetooth Temperature Humidity Sensor can sense the temperature of surrounding environment and humidity changes in real time, actively report to the user side at the same time, combined with other products to achieve a multifunctional smart home scenario.



Screen Display



Packing list

- Bluetooth Hygrometer×1
- Product manual×1
- Wall sticker×1

Product Specifications

Product Name	Bluetooth Temperature Humidity Sensor
Product Model	BSS-X-TH-LF
Battery specification	CR2032 button cell
Wireless protocol	Bluetooth 4.2
Temperature measurement range	-10°C~50°C
Humidity measurement range	0%~99%RH
Working voltage	DC2.5V~3V
Product size	43×42.5×11.8mm
Screen size	30×30mm
Product net weight	21g

Preparation for use

- ① Download MOES App on App store or scan the QR code.



- ② Registration or Log in.
 - Download "MOES" Application.
 - Enter the Register/Login interface; tap "Register" to create an account by entering your phone number to get verification code and "Set password". Choose "Log in" if you already have a MOES account.

Steps for connecting the APP to the device

Method One:

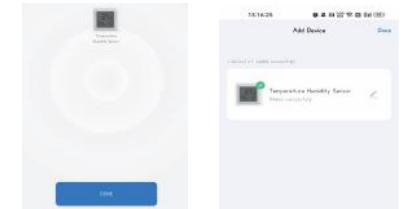
1. Scan the QR code to configure the network guide. Make sure your smartphone is Bluetooth on.



①

②

4. Add the device successfully, you can edit the name of the device to enter the device page by click "Done".



①①



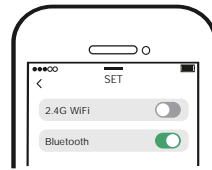
Scan this QR code



③

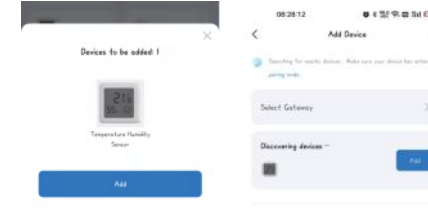
Method Two:

- 1.1. Please make sure your phone has Bluetooth on.



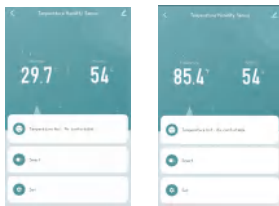
2. Reset: Long press the reset key until the Bluetooth flag on the device flashes.

3. Open MOSE App, then the prompt page will automatically show on the screen. Click "Add", Select the device you want to add and click "+".



⑩

5. Click "Done" to enter the device page to enjoy your smart life with home automation.



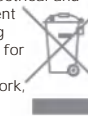
⑫

SERVICE

1. During the free warranty period, if the product breaks down during normal use, we will offer free maintenance for the product.
2. Natural disasters/man-made equipment failures, disassembly and repair without the permission of our company, no warranty card, products beyond the free warranty period, etc., are not within the scope of free warranty
3. Any commitment (oral or written) made by the third party (including the dealer/service provider) to the user beyond the warranty scope shall be executed by the third party
4. Please keep this warranty card to ensure your rights
5. Our company may update or change the products without notice. Please refer to the official website for the updates.

RECYCLING INFORMATION

All products marked with the symbol for separate collection of waste electrical and electronic equipment (WEEE Directive 2012/19 / EU) must be disposed of separately from unsorted municipal waste. To protect your health and the environment, this equipment must be disposed of at designated collection points for electrical and electronic equipment designated by the government or local authorities. Correct disposal and recycling will help prevent potential negative consequences for the environment and human health. To find out where these collection points are and how they work, contact the installer or your local authority.



WARRANTY CARD

Product Information

Product Name _____
 Product Type _____
 Purchase date _____
 Warranty Period _____
 Dealer Information _____
 Customer's Name _____
 Customer Phone _____
 Customer Address _____

Maintenance Records

Failure date	Cause Of Issue	Fault Content	Principal

Thank you for your support and purchase at we Moes, we are always here for your complete satisfaction, just feel free to share your great shopping experience with



If you have any other need, please do not hesitate to contact us first, we will try to meet your demand.

FOLLOW US

- MOES.Official
- @moessmart
- @moes_smart
- @moes_smart
- @moes_smart
- www.moes.net

WENZHOU NOVA NEW ENERGY CO.,LTD
 Address: Power Science and Technology Innovation Center, NO.238, Wei 11 Road, Yueqing Economic Development Zone, Yueqing, Zhejiang, China
 Tel: +86-577-57186815
 Email: service@moeshouse.com

UK REP EVATOST CONSULTING LTD
 Address: Suite 11, First Floor, Moy Road Business Centre, Taffs Well, Cardiff, Wales, CF15 7QR
 Tel: +44-292-1680945
 Email: contact@evatmaster.com

EC REP AMZLAB GmbH
 Laubenhof 23, 45326 Essen
 Made In China