



VC0002

2018+ Jeep Wrangler (JL) 3.6L

2020+ Jeep Gladiator (JT) 3.6L



IMPORTANT! WARRANTY AND INSTALLATION INSTRUCTIONS

Please Forward All Information to End Consumer

Be sure to review the enclosed instructions prior to beginning the installation process. If you have any questions about the enclosed parts or instructions, or if you encounter a problem during installation:

CALL TECHNICAL SUPPORT: 440.891.0999 or 800.486.0999

TO ACTIVATE YOUR WARRANTY, GO TO:
volant.com/warranty

This warranty does not extend to damaged or defect in the finish of a product or to any product, that in the opinion of Volant Performance, has been misused, damaged by accident or negligence, altered, or modified in any way, faulty installation, or installed contrary to Volant installation instructions, or repaired by an unauthorized service facility.

Full warranty available on Volant.com



NEVER work on a hot engine bay.
Allow time for the vehicle to cool.



Always wear eye protection
when working on a vehicle.

Color instructions are available at Volant.com. Search by kit number

Please take time to read and understand these installation instructions.

Volant recommends that the installation of this system be performed by a qualified service center or professional installer who has the necessary equipment, tools, and experienced personnel. However, if you decide to perform this installation yourself, the use of an additional person may be required.

WARNING: Never work on a hot engine bay. Allow time for the vehicle to cool.

Always wear eye protection when working on a vehicle.

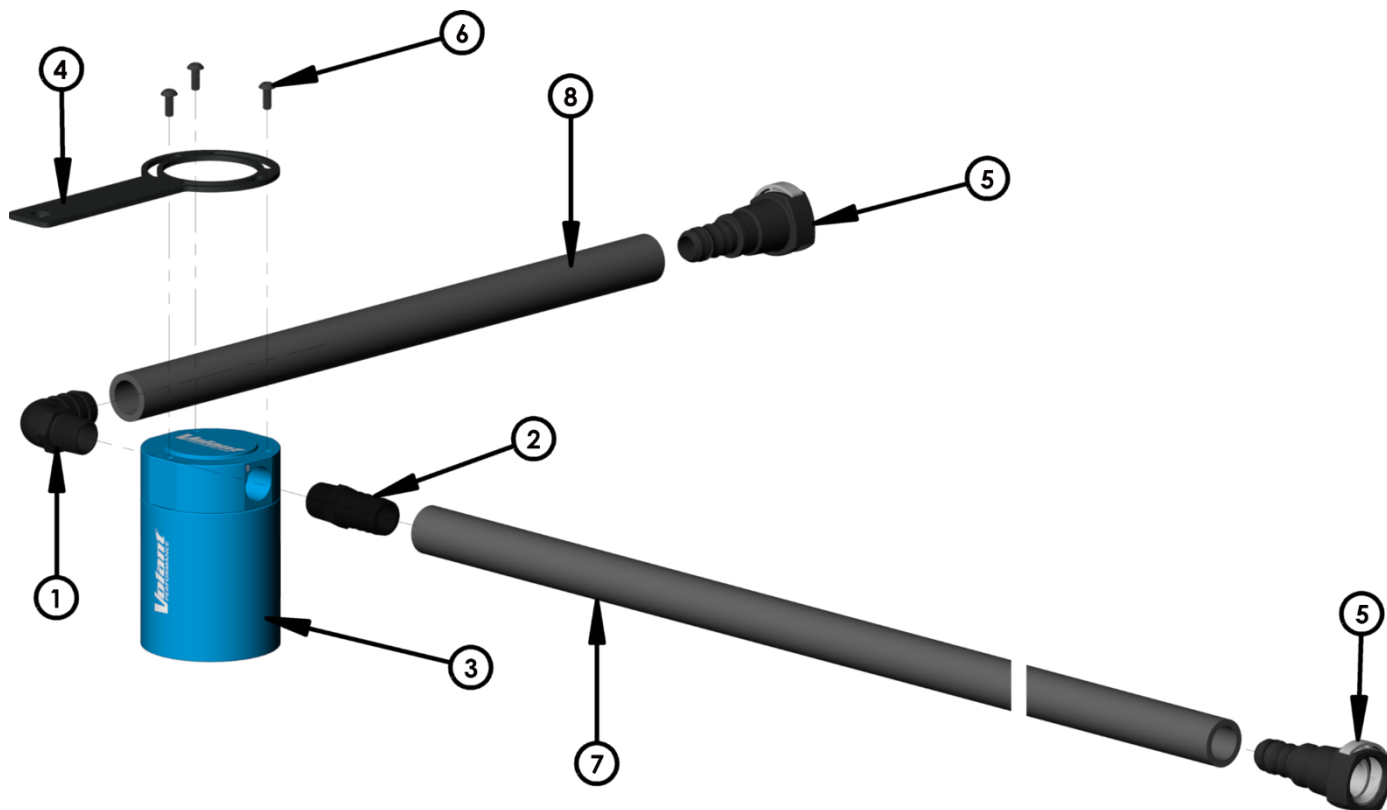
Recommended Tools & Supplies

- T-30 Torx Driver
 - 10mm Socket & Ratchet or Wrench
 - 11/16in Wrench
 - 2.5mm Hex Driver
-

INSTALL DIFFICULTY



Please confirm that all parts are present according to the bill of materials before beginning the installation.



Bill of Materials

1. 3/8" NPT Barbed Elbow Fitting (652186)	2. 3/8" NPT Barbed Straight Fitting (652189)
3. Volant Catch Can (652287)	4. Mounting Bracket (652181PCB)
5. 5/8in Quick Connect Fitting (652188) (Qty 2)	6. 4mm Button Head Screws (652187) (Qty 3)
7. Hose A - 5/8in x 42in (53005-42)	8. Hose B - 5/8in x 13in (53005-13)

If something is missing, call Volant Tech Support at 440.891.099 or Toll Free: 1.800.486.0999

If you are using an aftermarket air intake, you may need to determine how the PCV lines run compared to the Factory air intake.

Instructions

Volant Catch Can



1. Begin by removing the 2 screws by using a T-30 Torx Driver to remove the Factory Engine Cover.



2. Next, pull the Engine Cover forward to remove it from the Grommets.

Continued on Next Page...

Instructions

Volant Catch Can



3. Locate the PCV line on Driver's side of the Intake Manifold. Remove the Quick Connect Fitting by squeezing the grey tabs and pulling.



4. Locate the other end of the PCV line. It is attached to the Crankcase on the back corner Passenger side of the engine. Remove the Quick Connect Fitting by squeezing the grey tabs and pulling.

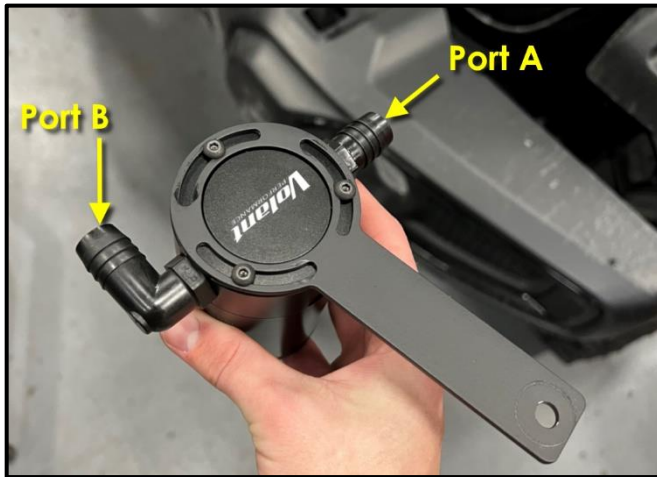


5. There are 4 clips attached along the Factory PCV line, 2 of them are circled in the image. Detach PCV line from clips and remove the PCV line from the vehicle.

Continued on Next Page...

Instructions

Volant Catch Can

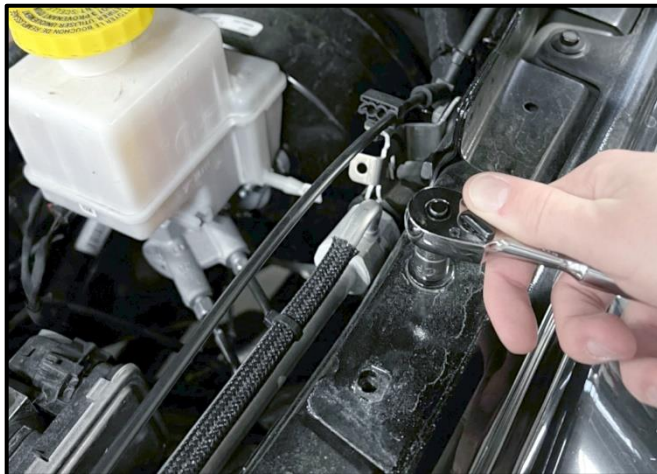


6. Using an 11/16in wrench, install Barbed fittings. **DO NOT OVER TIGHTEN!**

IMPORTANT: Volant recommends using thread sealant or PTFE tape on the barbed fittings to prevent any leaks.

7. Using a 2.5mm Hex Wrench, snug the Button Head Screws through the Mounting Bracket and into the Catch Can.

DO NOT FULLY TIGHTEN AT THIS TIME.



8. Using a 10mm Socket & Ratchet or Wrench, remove the Factory Bolt located next to the brake fluid reservoir on the Driver's side. Next, install the catch can bracket reusing the Factory bolt to secure the Volant Catch Can and Bracket.

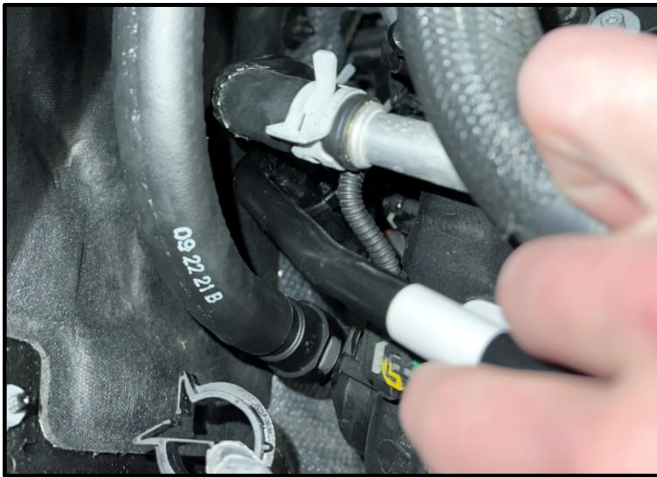


9. Attach quick disconnect fittings to one end of each of the provided hoses. A mild lubricant or heat may be needed to fully install fitting into hose.

Continued on Next Page...

Instructions

Volant Catch Can



10. Attach Hose A (longer) to the Crankcase on the back corner Passenger side of the engine (from Step 4). Route the Hose along the firewall and underneath the Coolant Reservoir and attach it to the Straight Fitting in Port A of the Volant Catch Can. **See Step 12 for suggested routing.**

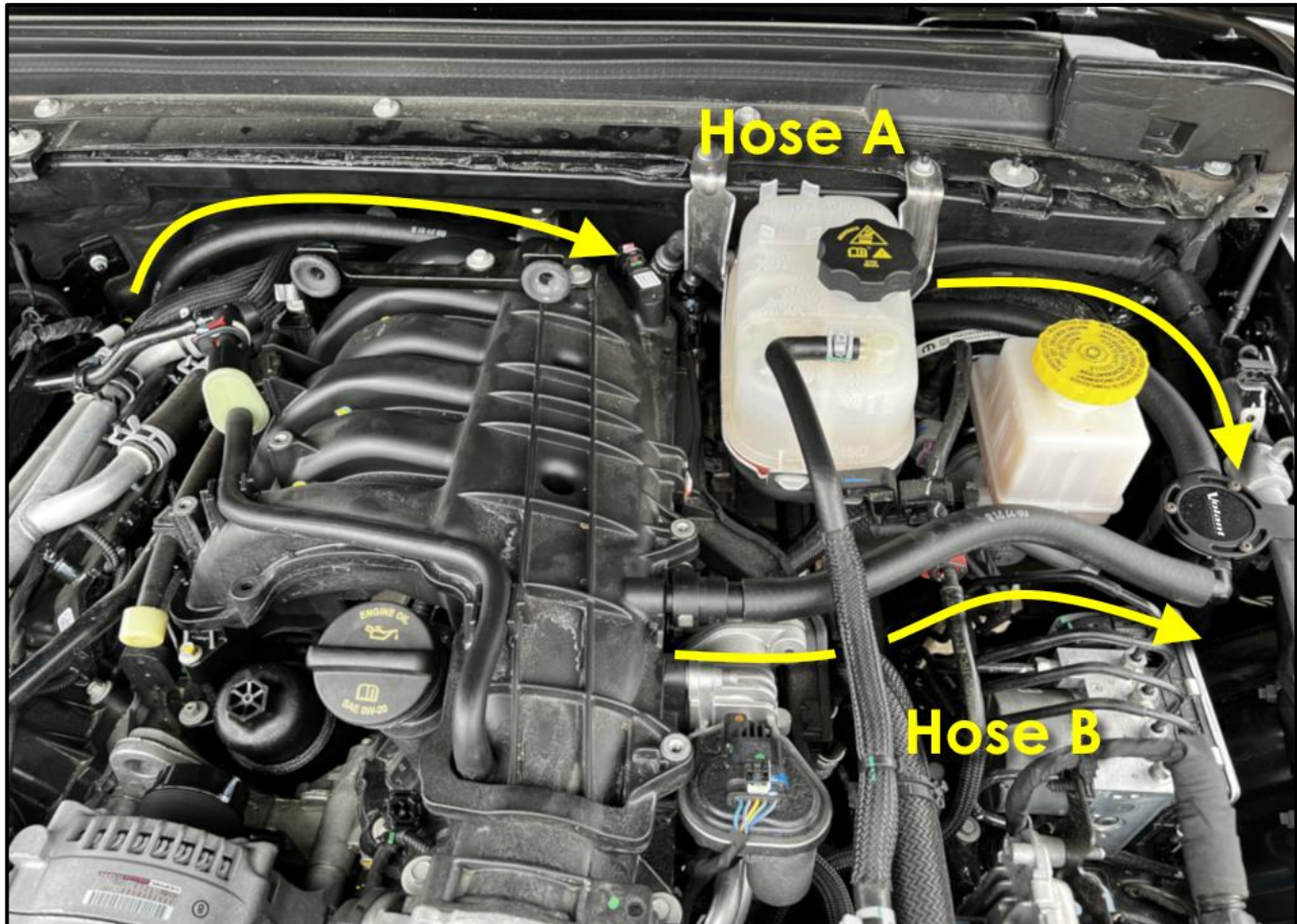


11. Connect Hose B (shorter) to the Intake Manifold (from Step 3) and attach the other end to the 90deg Elbow Fitting in Port B of the Volant Catch Can. **See Step 12 for suggested routing.**

Continued on Next Page...

Instructions

Volant Catch Can



12. Make sure the Quick Connect Fittings are secured in place and Hoses are pushed all the way over the Barbed Ends of both fittings.
13. Reinstall engine cover reversing Steps 1 and 2.

This concludes the installation of the Volant Catch Can.

*Check that this Catch Can complies with your Federal, State and Local laws.
We recommend saving your stock PCV line(s).*

Before Road Testing

1. Start engine, leaving the transmission in park and/or securing the parking brake.
2. Make sure to look and listen for any unusual noises. Repair problems if needed.
3. Once completed it will be necessary to check periodically, after a few heat cycles, for realignment and tightening of all connections.

Emptying Catch Can and Care

The Volant Catch Can will need to be emptied periodically. Volant recommends, at minimum, emptying at every oil change. When the Catch Can is full, the PCV line will operate normally, but the Catch Can will allow the oil and vapor to pass through.

1. Hold the top of the Catch Can and Bracket firmly.
2. Twist the bottom of the can until is free of the top and bracket.
3. Properly dispose of the oil and vapor residue.
4. If the treads of the bottom are dry, apply some fresh oil or petroleum jelly to the threads. This will help with removing the bottom the next time.
5. Reinstall the bottom of the can while firmly holding the top and bracket.
Caution: DO NOT OVER TIGHTEN. It will make removal difficult.