



IMPORTANT! WARRANTY AND INSTALLATION INSTRUCTIONS

Please Forward All Information to Consumer

Be sure to review the enclosed instructions prior to beginning the installation process. If you have any questions about the enclosed parts or instructions, or if you encounter a problem during installation:

CALL TECHNICAL SUPPORT: 440.891.0999 or 800.486.0999

COLOR INSTRUCTIONS ARE AVAILABLE BY PART NUMBER ON:

VOLANT.COM



NEVER work on a hot engine bay.

Allow time for the vehicle to cool.

INSTALL DIFFICULTY



RECOMMENDED TOOLS & SUPPLIES

- Flathead Screwdriver
 - Assorted Socket-Set
 -
 -
 - Ratchet
 - Ratchet Extension
 -
 -
-

Please take time to read and understand these installation instructions.

Volant recommends that the installation of this system be performed by a qualified service center or professional installer who has the necessary equipment, tools, and experienced personnel. However, if you decide to perform this installation yourself, the use of an additional person may be required.

WARNING: Never work on a hot engine bay. Allow time for the vehicle to cool.

Check that this air intake complies with your Federal, State, and Local laws. We recommend saving your stock system.

This warranty does not extend to damaged or defect in the finish of a product or to any product, that in the opinion of Volant Performance, has been misused, damaged by accident or negligence, altered or modified in any way, faulty installation or installed contrary to Volant installation instructions, or repaired by an unauthorized service facility.

Full warranty available on <http://www.volant.com>

Please confirm that all parts are present according to the bill of materials before beginning the installation.

If something is missing call Tech Support at 440.891.099 or Toll Free: 1.800.486.0999



PREASSEMBLED MATERIALS

612029-240 – Metal Shield	1	641049-240 – Metal Air Duct	1	460641 – Ø6” x Ø4” Filter Adapter	1
5119/5160 – Pro5/DryTech 3D Filter	1				

HARDWARE KIT

52060 - #60 Clamp	3	52064 - #64 Clamp	1	53310 – Ø3.5” x Ø4” Reducer	1
534035 – Ø3.5” Elbow	1	56006 – 37” Vinyl Trim	1	59012210 – 6mm x 16 Bolt	3
59012212 – 6mm x 25 Bolt	1	59020101 – ¼” x ¾” Flat Washer	1	59020104 – ¼” Flat Washer	3
59020114 – ¼” Lock Washer	4	59061210 – 6mm Nut	1	652007 – ¼” Spacer	1
652008 – 6” Wire Loom	1				

*Locate the vehicle's battery and disconnect the negative battery cable.
This may reset the computer and clear old air flow data to help prevent CEL errors.*

REMOVAL INSTRUCTIONS

FACTORY INTAKE



1. Stock intake before removal.



2. Loosen clamp securing factory air duct to throttle body using an 8mm socket and ratchet.



3. Disconnect two quick disconnect fitting from rear of factory air duct.



4. Remove bolt securing factory air box to vehicle using a 13mm wrench or ratchet and socket.

NOTE: SAVE BOLT FOR INSTALLATION ALONG WITH RUBBER GROMMET AND METAL INSERT.

Continued on Next Page ...

REMOVAL INSTRUCTIONS

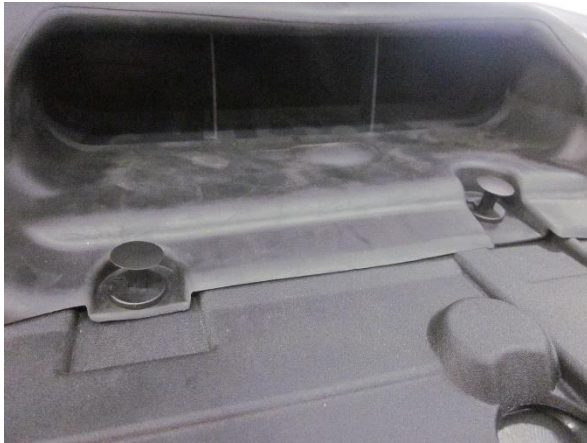
FACTORY INTAKE



5. Pull coolant line out of retaining clip on factory air duct.



6. Unclip top of factory air box and remove duct and top half of air box as one piece.



7. Remove two plastic clips retaining the factory air scoop.

NOTE: SAVE CLIPS FOR INSTALLATION.



8. Pull scoop and bottom half of factory air box up and out of vehicle.

Continued on Next Page ...

REMOVAL INSTRUCTIONS

FACTORY INTAKE



9. Using an 8mm socket and ratchet, remove bolt securing factory air scoop to lower half of factory air box.

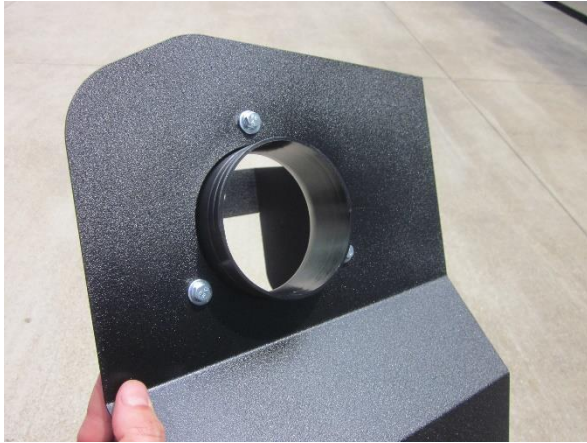


10. Remove factory air scoop from air box.

This concludes the removal of the factory intake.

INSTALLATION INSTRUCTIONS

VOLANT INTAKE



1. Bolt filter adapter to Volant metal shield with 6mm x 16 bolts, 1/4" lock washers, and 1/4" flat washer using 10mm socket and ratchet.



2. Install vinyl trim onto Volant metal shield. Add relief cuts at sharp bends to allow trim to form to shape as necessary.



3. Install factory air duct onto Volant metal air duct with 6mm x 25 bolt, 1/4" spacer, 1/4" lock washer, 1/4" flat washers, and 6mm nut using 10mm socket and ratchet and 10mm wrench.

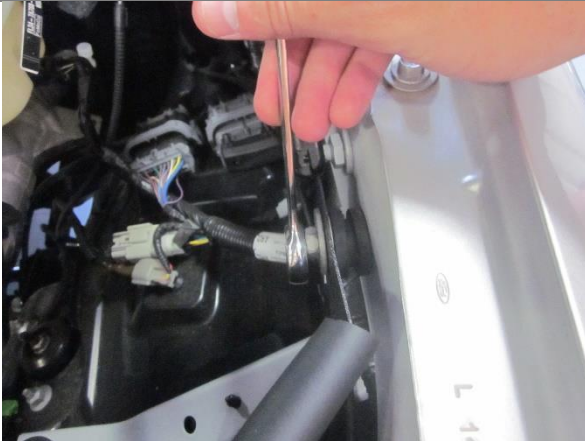


4. Place Volant metal shield and air scoop into vehicle.

Continued on Next Page ...

INSTALLATION INSTRUCTIONS

VOLANT INTAKE



5. Attach shield to vehicle using hardware retained in removal step 4 with a 13mm socket and ratchet or wrench. The rubber grommet/metal insert assembly should act as a spacer.



6. Slide Ø3.5" elbow onto throttle body along with a #60 clamp placed loosely on each end.



7. Place reducer onto filter adapter with #64 clamp placed loosely on large end and #60 placed loosely on smaller end.



8. Install Volant metal air duct into elbow and reducer.

Continued on Next Page ...

INSTALLATION INSTRUCTIONS

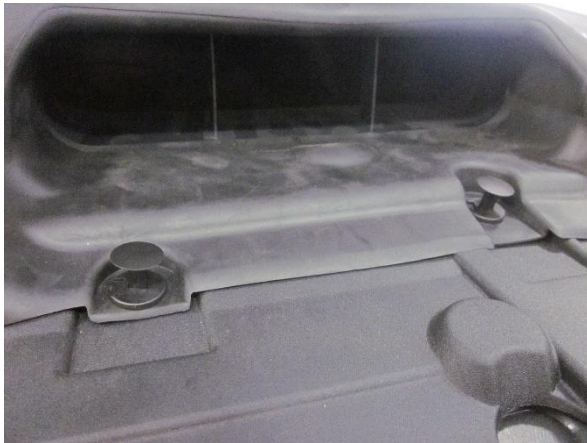
VOLANT INTAKE



9. Position duct and tighten all clamps with 8mm socket and ratchet.



10. Connect the two factory hoses to rear of duct.



11. Install plastic clips from removal step 7, securing factory air scoop back into factory location.



12. Install filter onto filter adapter and tighten clamp with 8mm socket and ratchet.



13. Attach CARB EO label in visible underhood location and re-attach battery cables.

Continued on Next Page . . .

*Check that this air intake complies with your Federal, State and Local laws.
We recommend saving your stock system.*

BEFORE ROAD TESTING

1. Start engine, leaving the transmission in park and securing the parking brake.
 2. Make sure to look and listen for any unusual noises or air leaks. Repair problems if needed.
 3. Once completed it will be necessary to check periodically, after a few heat cycles, for realignment and tightening of all connections.
-

PRO5 CARE AND CLEANING

Check the Pro-5 cotton reusable filter periodically and remove any excessive dirt build-up by tapping the filter on the ground and brushing off the loosened dirt. Clean the filter by using a two stage cleaning kit to thoroughly clean and re-oil the filter. Re-oil every 10,000 miles without cleaning to improve filtering in sand and dirt. Clean only when dirt is very excessive or 50,000 miles.

Reference for Replacement Filters: Pro5 Filter Part # 5119 or DryTech 3D Filter Part # 5160