



IMPORTANT! WARRANTY AND INSTALLATION INSTRUCTIONS

Please Forward All Information to Consumer

Be sure to review the enclosed instructions prior to beginning the installation process. If you have any questions about the enclosed parts or instructions, or if you encounter a problem during installation:

CALL TECHNICAL SUPPORT: 440.891.0999 or 800.486.0999

COLOR INSTRUCTIONS ARE AVAILABLE BY PART NUMBER ON:

VOLANT.COM



NEVER work on a hot engine bay.

Allow time for the vehicle to cool.

INSTALL DIFFICULTY



RECOMMENDED TOOLS & SUPPLIES

- Flathead Screwdriver
 - Assorted Socket-Set
 -
 -
 - Ratchet
 - Ratchet Extension
 -
 -
-

Please take time to read and understand these installation instructions.

Volant recommends that the installation of this system be performed by a qualified service center or professional installer who has the necessary equipment, tools, and experienced personnel. However, if you decide to perform this installation yourself, the use of an additional person may be required.

WARNING: Never work on a hot engine bay. Allow time for the vehicle to cool.

Check that this air intake complies with your Federal, State, and Local laws. We recommend saving your stock system.

This warranty does not extend to damaged or defect in the finish of a product or to any product, that in the opinion of Volant Performance, has been misused, damaged by accident or negligence, altered or modified in any way, faulty installation or installed contrary to Volant installation instructions, or repaired by an unauthorized service facility.

Full warranty available on <http://www.volant.com>

Please confirm that all parts are present according to the bill of materials before beginning the installation.

If something is missing call Tech Support at 440.891.0999 or Toll Free: 1.800.486.0999



PREASSEMBLED MATERIALS

612032-240 – Metal Shield	1	441189 – Plastic Air Duct	1	460641 – Ø6” x Ø4” Filter Adapter	1
5119/5160 – Filter	1				

HARDWARE KIT

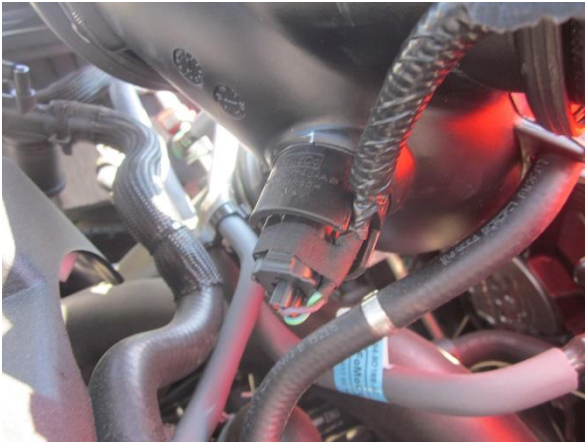
52048 - #48 Clamp	1	52056 - #56 Clamp	1	52064 - #64 Clamp	1
53109 – Ø4” Straight Sleeve	3”	53206 – Ø4” hump Hose	1	53307 – Ø3.5” x Ø3” Reducer	1
56006 – 37” Vinyl Trim	1	59012210 – 6mm x 16 Bolt	3	59012212 – 6mm x 25 Bolt	1
59020101 – ¼” x ¾” Flat Washer	1	59020104 – ¼” Flat Washer	3	59020114 – ¼” Lock Washer	4
59045101 – ½” Rubber Grommet	1	59061210 – 6mm Nut	1	652007 – ¼” Spacer	1
652022 – Vent Insert	1				

Locate the vehicle's battery and disconnect the negative battery cable.

This may reset the computer and clear old air flow data to help prevent CEL errors.

REMOVAL INSTRUCTIONS

FACTORY INTAKE



1. Disconnect wiring harness from sensor on rear of factory air duct.



2. Loosen upper factory intake air duct clamp.



3. Loosen lower factory intake air duct clamp.



4. Unclip factory air box lid.

Continued on Next Page ...

REMOVAL INSTRUCTIONS

FACTORY INTAKE

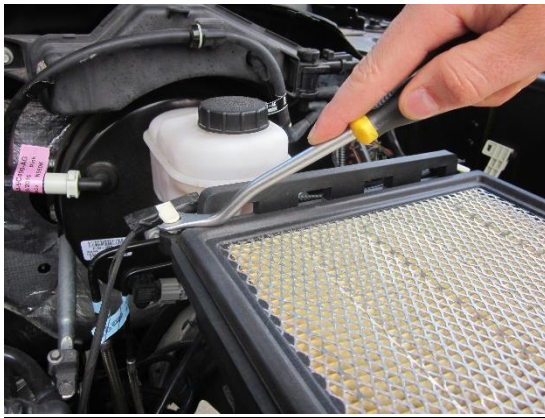


5. Remove factory air duct and lid as one piece.



6. Remove bolt securing factory air box using 13mm wrench.

NOTE: SAVE BOLT FOR INSTALLATION ALONG WITH RUBBER GROMMET AND METAL BUSHING



7. Remove the two plastic wire retention clips from the rear of the factory air box using a trim removal tool.



8. Remove the two clips securing the factory air scoop using trim removal tool.

NOTE: SAVE CLIPS FOR INSTALLATION



9. Remove the entire lower box and scoop assembly as one piece.



10. Remove the temperature sensor from the factory air duct.

NOTE: SAVE SENSOR FOR INSTALLATION.

Continued on Next Page ...

REMOVAL INSTRUCTIONS

FACTORY INTAKE



11. Remove bolt securing factory air scoop to lower air box using an 8mm socket and ratchet.

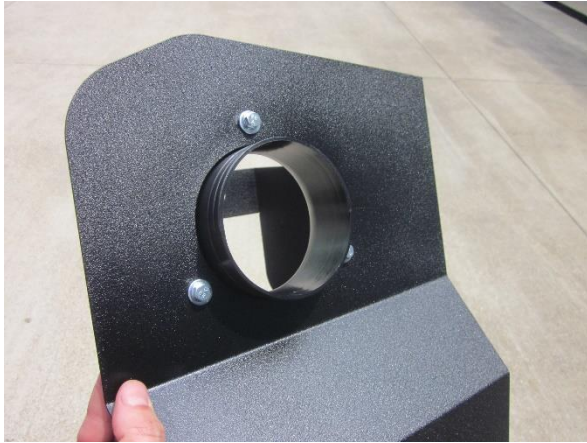


12. Separate factory air scoop from lower air box.

This concludes the removal of the factory intake.

INSTALLATION INSTRUCTIONS

VOLANT INTAKE



1. Attach filter adapter to Volant metal shield with three 6mm x 16 bolts, 1/4" lock washers, and 1/4" flat washers using a 10mm socket and ratchet.



2. Install vinyl trim on Volant metal shield. Add relief cuts at sharp corners to ease installation.



3. Attach factory air scoop to Volant metal shield. Place the 1/4" spacer between the scoop and metal shield and use the 6mm x 25 bolt along with 1/4" x 3/4" flat washer, normal 1/4" flat washer, 1/4" lock washer, and 6mm nut to secure. Tighten hardware with a 10mm socket and ratchet and 10mm wrench.



4. Install Volant metal shield into vehicle. Secure shield to vehicle using hardware from removal step 6. The rubber grommet and metal bushing should act as a spacer for the shield. Tighten with a 13mm wrench.

Continued on Next Page ...

INSTALLATION INSTRUCTIONS

VOLANT INTAKE



5. Insert factory temperature sensor from removal step 10 into Volant air duct grommet.



6. Place Ø4" straight sleeve onto lower outlet of Volant air duct along with two #64 clamps placed loosely. Place Ø4" hump hose onto filter adapter along with two #64 clamps placed loosely on each end. Place reducer onto upper outlet of Volant air duct along with one #56 clamp on larger end and one #48 clamp on smaller end. Install Volant air duct into vehicle, lower outlet first, followed by upper outlet, and finally pushing duct into hump hose on adapter. Adjust duct as necessary and tighten all clamps with 8mm socket and ratchet.



7. Connect wiring harness to temperature sensor.



8. Install clips from removal step 8 back into factory location securing factory air scoop.



9. Install filter onto adapter and tighten clamp with 8mm socket and ratchet. Place CARB EO label in visible location under hood.
10. Re-connect battery cable.

*Check that this air intake complies with your Federal, State and Local laws.
We recommend saving your stock system.*

BEFORE ROAD TESTING

1. Start engine, leaving the transmission in park and securing the parking brake.
2. Make sure to look and listen for any unusual noises or air leaks. Repair problems if needed.
3. Once completed it will be necessary to check periodically, after a few heat cycles, for realignment and tightening of all connections.

PRO5 CARE AND CLEANING

Check the Pro-5 cotton reusable filter periodically and remove any excessive dirt build-up by tapping the filter on the ground and brushing off the loosened dirt. Clean the filter by using a two stage cleaning kit to thoroughly clean and re-oil the filter. Re-oil every 10,000 miles without cleaning to improve filtering in sand and dirt. Clean only when dirt is very excessive or 50,000 miles.

Reference for Replacement Filters: Pro5 Filter Part # 5119 or DryTech 3D Filter Part # 5160