



IMPORTANT! WARRANTY AND INSTALLATION INSTRUCTIONS

Please Forward All Information to Consumer

Be sure to review the enclosed instructions prior to beginning the installation process. If you have any questions about the enclosed parts or instructions, or if you encounter a problem during installation:

CALL TECHNICAL SUPPORT: 440.891.0999 or 800.486.0999

COLOR INSTRUCTIONS ARE AVAILABLE BY PART NUMBER ON:

VOLANT.COM



NEVER work on a hot engine bay.

Allow time for the vehicle to cool.

INSTALL DIFFICULTY     

RECOMMENDED TOOLS & SUPPLIES

• Flat blade screwdriver	• #2 Phillips head screwdriver
• 3/8" drive Ratchet Handle	• 3/8" drive Socket extension
• Assorted 3/8" drive US & Metric Socket Set	• 13mm Open/Closed Box End Wrench
• Slip joint pliers	• Metal cutting snips
• (OPTIONAL) 8mm nut driver	• (OPTIONAL) Fender Clip Removal Tool
• (OPTIONAL) Nail Puller	•

2015-18 Ford F-150 EcoBoost w 2.7L V6 Turbo, 3.5L
V6 Turbo*



* SEE APPLICATIONS BELOW

APEX Metal Shield Air Intake System

MADE
IN ★ THE ★ USA

2015-18 Ford F-150 EcoBoost w 2.7L V6 Turbo, 3.5L V6 Turbo*



* SEE APPLICATIONS BELOW

APEX Metal Shield Air Intake System

APPLICATIONS: FORD F-150 EcoBoost – 2015-18 w/ 2.7L V6 Turbo, 2015-16 w/ 3.5L V-6 Turbo

Please take time to read and understand these installation instructions.

Volant recommends that the installation of this system be performed by a qualified service center or professional installer who has the necessary equipment, tools, and experienced personnel. However, if you decide to perform this installation yourself, the use of an additional person may be required.

WARNING: Never work on a hot engine bay. Allow time for the vehicle to cool.

Check that this air intake complies with your Federal, State, and Local laws. **We recommend saving your stock system.**

This warranty does not extend to damaged or defect in the finish of a product or to any product, that in the opinion of Volant Performance, has been misused, damaged by accident or negligence, altered or modified in any way, faulty installation or installed contrary to Volant installation instructions, or repaired by an unauthorized service facility.

Full warranty available on <http://www.volant.com>

IMPORTANT!! Please confirm all parts are present according to the bill of materials below before beginning the installation!

If something is missing call Tech Support at 440.891.0999 or Toll Free: 1.800.486.0999



HARDWARE KIT

VOLANT APEX Metal Air Intake Housing	1	VOLANT Pro-5 filter w/ clamp	1	VOLANT APEX Plastic Air Duct	1
VOLANT Filter Adapter	1	Stainless Steel #048 Hose Clamp	1	Stainless Steel #056 Hose Clamp	1
Stainless Steel #064 Hose Clamp	4	3.00" x 4.00" Hump Hose	1	3.0" x 4.0" Straight Sleeve Hose	1
3.50" to 3.00" Reducer Hose	1	Vinyl Trim	52"	6mm x 14 Bolt	3
6mm x 25 Bolt	1	1/4" Lock Washers	4	1/4" x 3/4" Flat Washer	1
1/4" x 5/8" Flat Washer	3	6mm Nut	1	Rubber Grommet	1
1/4" Spacer	1	Installation Instructions	1	VOLANT Badge	1
CARB Compliance Label	1				

* SEE APPLICATIONS BELOW

APEX Metal Shield Air Intake System

Locate the vehicle's battery and disconnect the negative battery cable.

*This may reset the computer and clear old air flow data to help prevent CEL errors. It is advisable to write down memory settings before disconnecting the battery. Some radios may require an anti-theft code to be entered when power is restored, which can be found in the owner manual or by contacting an authorized **FORD** dealer.*

*Pease contact **Volant Technical Services** at 440.891.0999 or 800.486.0999 if you have questions.*

REMOVAL INSTRUCTIONS

FACTORY INTAKE



1. Disconnect harness from the air temperature sensor.



2. Loosen the rear clamp on the upper air intake tube.



3. Loosen the rear clamp on the lower air intake tube.



4. Unclip the latches on the top of the air box lid.

Continued on Next Page ...

REMOVAL INSTRUCTIONS

FACTORY INTAKE

* SEE APPLICATIONS BELOW

APEX Metal Shield Air Intake System



5. Disconnect the air tubes, lift the lid and remove the air duct and air box lid assembly as one piece.



6. Using a 13mm open/closed box end wrench, remove the bolt holding the air box to the vehicle. **Remove the rubber grommet and metal washer and save for installation of the VOLANT APEX heat shield.**



7. Using a nail puller, or a flat blade screwdriver, gently remove the two plastic wire retention clips from the back of air box.



8. Using a fender clip removal tool or a flat blade screwdriver, remove the two plastic clips from the factory air scoop. **Save the plastic clips for the installation of the VOLANT APEX heat shield.**

Continued on Next Page . . .

REMOVAL INSTRUCTIONS

FACTORY INTAKE

2015-18 Ford F-150 EcoBoost w 2.7L V6 Turbo, 3.5L V6 Turbo*



* SEE APPLICATIONS BELOW

APEX Metal Shield Air Intake System



9. Lift the lower air plenum and the air scoop straight up. Remove the assembly from the vehicle.



10. Remove the air temperature sensor (ATS) from the factory air duct removed in Removal Step 5. **Save the sensor for the re-installation in the VOLANT APEX air duct.**



11. Using an 8mm nut driver or socket, remove the factory air scoop from the bottom of the air box.



12. Once the fasteners have been removed from the air scoop, separate the scoop and the air box.

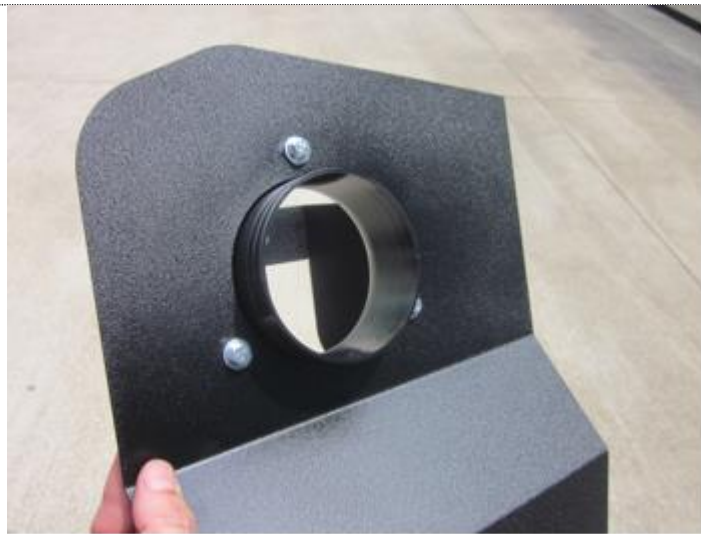
This concludes the removal of the factory intake.

* SEE APPLICATIONS BELOW

APEX Metal Shield Air Intake System

INSTALLATION INSTRUCTIONS

VOLANT INTAKE



1. Begin assembly by bolting the filter adapter to heat shield using supplied 6mm x 14 bolts, 1/4" lock washers, and 1/4" flat washers.



2. Install the trim strip on VOLANT APEX heat shield. Add a relief cuts with the metal cutting snips where necessary to allow trim to form around sharp bends. Use slip joint pliers to crimp the trim strip onto the heat shield.



3. Install stock air scoop to bottom of VOLANT APEX heat shield using the 6mm x 25 bolt, 1/4" spacer, lock washer, flat washer, and 6mm nut.



4. Insert heat shield into the space used by the original air box. Bolt the side of heat shield to vehicle using the factory 13mm bolt and rubber washer from Removal Step 6.

Continued on Next Page . . .

* SEE APPLICATIONS BELOW

APEX Metal Shield Air Intake System

INSTALLATION INSTRUCTIONS

VOLANT INTAKE



5. Insert the ATS removed in Removal Step 10 into the grommet in the VOLANT APEX air duct.

6. Slide two #064 clamps onto the 4" straight sleeve hose and place onto the lower factory intake tube. Place two #064 clamps on the 4" hump hose and slide onto the filter adapter. Slide one #048 clamp and one #056 clamp onto the silicone reducer hose and place onto the factory air duct. Once all of the hoses are in place, install the VOLANT APEX air duct onto the hoses, and using a flat blade screwdriver or a 5/16" nut driver, tighten all of the clamps.



7. Reattach the ATS wiring harness to the sensor.



8. Reinstall factory fender plastic pins into the air inlet opening from Removal Step 8.

Continued on Next Page . . .

* SEE APPLICATIONS BELOW

APEX Metal Shield Air Intake System

INSTALLATION INSTRUCTIONS

VOLANT INTAKE



9. Install the VOLANT Pro-5 filter (or DryTech 3D filter) onto the filter adapter and tighten the clamp with a using a flat blade screwdriver or a 5/16" nut driver.

10. Finally, place the CARB Compliance Label in the small hardware bag in a visible spot on the top of the radiator bulkhead. Clean the bulkhead before applying the label. Place VOLANT badge on heat shield, air duct or any other desired location.
(Use EO D-XXX-X label!!)



11. Reattach the negative battery cable and recheck all connections before driving. Retighten all clamps after 500 miles.

INSTALLED VOLANT APEX 319635 KIT

*Check that this air intake complies with your Federal, State and Local laws.
We recommend saving your stock system.*

* SEE APPLICATIONS BELOW

APEX Metal Shield Air Intake System

BEFORE ROAD TESTING

1. Start engine, leaving the transmission in park and securing the parking brake.
 2. Make sure to look and listen for any unusual noises or air leaks. Repair problems if needed.
 3. Once completed it will be necessary to check periodically, after a few heat cycles, for realignment and tightening of all connections.
-

CARE AND CLEANING

Check the **VOLANT Pro-5 reusable filter** periodically and remove any excessive dirt build-up by tapping the filter on the ground and brushing off the loosened dirt. Clean the Pro-5 (Blue) filter by using the VOLANT # 5100 Two-Stage Cleaning Kit to thoroughly clean and re-oil the filter. Re-oil every 10,000-15,000 miles without cleaning to improve filtering in sand and dirt. Clean only when dirt is very excessive or at or before 40,000 miles.

For **VOLANT DryTech 3D (Red) filters**: Remove excess dirt by tapping the filter on the ground. Vacuum clean for a quick clean. Rinse DryTech 3D filters with water every 50,000 miles and allow to dry completely prior to re-installation. **DO NOT OIL!**

Reference for Replacement Filters: Pro-5 Filter Part # 5119 or DryTech 3D Filter Part # 5160