



IMPORTANT! WARRANTY AND INSTALLATION INSTRUCTIONS

Please Forward All Information to Consumer

Be sure to review the enclosed instructions prior to beginning the installation process. If you have any questions about the enclosed parts or instructions, or if you encounter a problem during installation:

CALL TECHNICAL SUPPORT: 440.891.0999 or 800.486.0999

COLOR INSTRUCTIONS ARE AVAILABLE BY PART NUMBER ON: VOLANT.COM



NEVER work on a hot engine bay.
Allow time for the vehicle to cool.

INSTALL DIFFICULTY



RECOMMENDED TOOLS & SUPPLIES

- Flathead Screwdriver
- 8mm Socket
- T20 Torx Driver
- Philips Head Screwdriver
- Ratchet
- Ratchet Extension

Please take time to read and understand these installation instructions.

Volant recommends that the installation of this system be performed by a qualified service center or professional installer who has the necessary equipment, tools, and experienced personnel. However, if you decide to perform this installation yourself, the use of an additional person may be required.

WARNING: Never work on a hot engine bay. Allow time for the vehicle to cool.

Check that this air intake complies with your Federal, State, and Local laws. We recommend saving your stock system.

This warranty does not extend to damaged or defect in the finish of a product or to any product, that in the opinion of Volant Performance, has been misused, damaged by accident or negligence, altered or modified in any way, faulty installation or installed contrary to Volant installation instructions, or repaired by an unauthorized service facility.

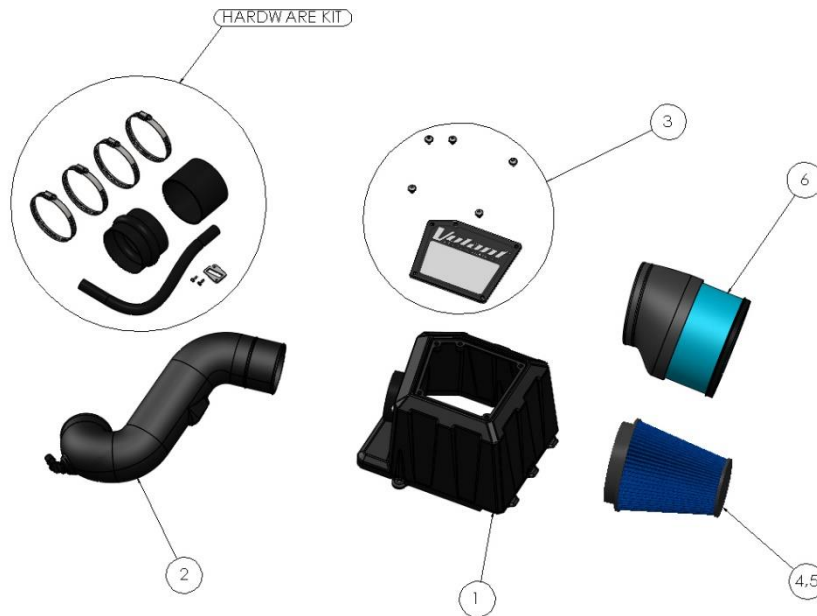
Full warranty available on <http://www.volant.com>

Please confirm that all parts are present according to the bill of materials before beginning the installation.

If something is missing call Tech Support at 440.891.099 or Toll Free: 1.800.486.0999

2019 CHEVY SILVERADO/GMC SIERRA L

Closed Box Air Intake
Part #: 15954/159546/15954D



PREASSEMBLED MATERIALS

1. Volant Air Box (412221)		2. Volant Air Duct (441306)		3. Volant Lid Assembly (652081)	
Filter Adapter (460641)	1	5/8" Elbow Fitting (59034143)	1	Lid Screw (5900)	5
6mm Bolt (59012210)	3	5/8" Grommet (59045103)	1	Rubber Washer (59045101)	5
Flat Washer (59020104)	3				
Lock Washer (59020114)	3				

FILTER OPTIONS

4. MaxFlow 5 Oiled Filter (5119)	5. DryTech Dry Filter (5160)	6. PowerCore Filter (61517)
----------------------------------	------------------------------	-----------------------------

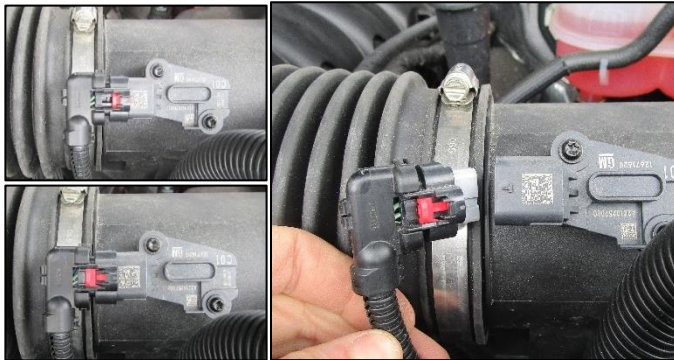
HARDWARE KIT

Hump Hose (53206)	1	#64 Clamp (52064)	4	Breather Hose (53005)	16.5 in
MAF screw (59051214)	2	Straight Sleeve (53109)	3 in	MAF Gasket (5619754)	1

*Locate the vehicle's battery and disconnect the negative battery cable.
This may reset the computer and clear old air flow data to help prevent CEL errors.*

REMOVAL INSTRUCTIONS

FACTORY INTAKE



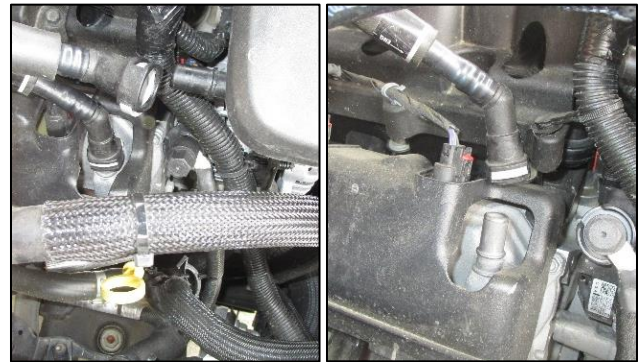
- 1.** Pull red tab on MAF sensor wiring harness. Squeeze black clip behind red tab to release wiring harness and pull harness from the sensor.



- 2.** Loosen clamp securing factory air duct to the factory air box with a ratchet and 8mm socket.



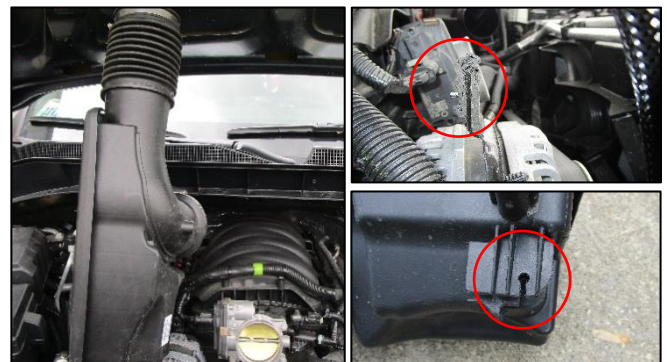
- 3.** Loosen clamp securing factory air duct to throttle body with a ratchet and 8mm socket.



- 4.** Remove factory breather hose at both ends by squeezing gray clip and pulling hose from fitting.



- 5.** Pull air duct bellows from air box. Remove air duct from throttle body.

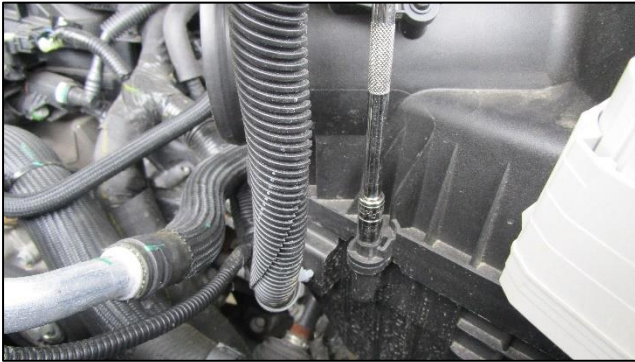


- 6.** Pull factory air duct from throttle body. Rotate air duct 90 degrees and slide air duct out from retaining bracket.

Continued on Next Page ...

REMOVAL INSTRUCTIONS

FACTORY INTAKE



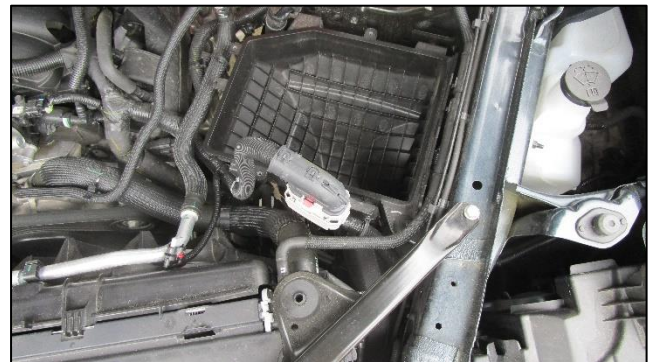
- 7.** Remove three bolts securing factory air box upper portion to lower using a ratchet with extension and 8mm socket.



- 8.** Remove upper portion of factory air box.



- 9.** Remove factory air filter from lower air box.



- 10.** Lower factory air box remains in vehicle and is used with Volant air intake.



- 11.** Remove two screws securing MAF sensor with a T20 Torx driver. Remove MAF sensor from factory air box.



- 12.** Remove factory gasket from MAF sensor.

This concludes the removal of the factory intake.

INSTALLATION INSTRUCTIONS

VOLANT INTAKE



1. Install Volant MAF gasket onto MAF sensor.



2. Install sensor into Volant air duct. Secure using the two supplied screws and a Philips head screwdriver.



3. Install filter onto adapter in Volant air box. Tighten clamp using a ratchet and 8mm socket.



4. Install Volant air box onto lower portion of factory air box in vehicle. Using the three factory screws from removal step 7, secure Volant air box with a ratchet and 8mm socket with extension.



5. Place hump hose onto adapter with two of the included #64 clamps.



6. Place straight sleeve onto throttle body with included #64 clamp. Place included #64 clamp on other end of straight sleeve.

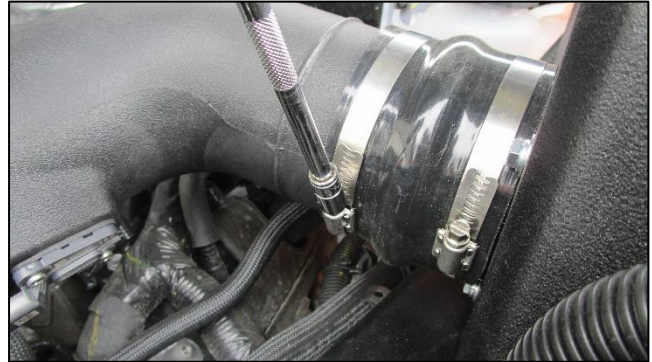
Continued on Next Page ...

INSTALLATION INSTRUCTIONS

VOLANT INTAKE



- 7.** Insert Volant air duct into hump hose and reducer.



- 8.** Adjust duct fitment as necessary and tighten all four clamps using a ratchet and 8mm socket.



- 9.** Push one end of included breather hose onto factory fitting.



- 10.** Push other end of breather hose onto installed elbow fitting in Volant air duct.



- 11.** Re-route MAF wiring harness under large wiring harness and install into MAF sensor until it clicks into place. Push red tab back down to lock sensor in place.



- 12.** Remove protective wrap from Volant lid. Connect negative battery terminal.

This completes the installation of your Volant air intake system.

*Check that this air intake complies with your Federal, State and Local laws.
We recommend saving your stock system.*

BEFORE ROAD TESTING

- 1.** Start engine, leaving the transmission in park and securing the parking brake.
 - 2.** Make sure to look and listen for any unusual noises or air leaks. Repair problems if needed.
 - 3.** Once completed it will be necessary to check periodically, after a few heat cycles, for realignment and tightening of all connections.
-

MAXFLOW 5 CARE AND CLEANING

Check the MAXFLOW 5 cotton reusable filter periodically and remove any excessive dirt build-up by tapping the filter on the ground and brushing off the loosened dirt. Clean the filter by using a two stage cleaning kit to thoroughly clean and re-oil the filter. Re-oil every 10,000 miles without cleaning to improve filtering in sand and dirt. Clean only when dirt is very excessive or 50,000 miles.

Reference for Replacement Filters: MaxFlow 5 Filter Part # 5119, DryTech 3D Filter Part # 5160
or PowerCore® Filter Part # 61517