



**IMPORTANT WARRANTY & INSTALLATION
INSTRUCTIONS ATTACHED**

*Please Forward All Attached Information to Consumer
Warranty Not Valid Unless Returned to Volant Performance*



**For Full-Color Installation Instructions, Please Visit:
VOLANTPERFORMANCE.COM and Search by Part Number**

Please be sure to review the enclosed instructions prior to beginning the installation process. If you have any questions about the enclosed parts, instructions or encounter a problem during installation:

CALL VOLANT PERFORMANCE TECHNICAL ASSISTANCE AT 909.481.3888

Please take time to read and understand these installation instructions.

Volant recommends that the installation of this system be performed by a qualified service center or professional installer who has the necessary equipment, tools and experienced personnel. However, if you decide to perform this install the use of an additional person may be required.

CAUTION: Never work on a hot engine bay. Allow time for the vehicle to cool.

Recommended Tools:

- Flathead Screwdriver
- Assorted Socket-Set
- Ratchet
- Ratchet Extension

Please confirm that all parts are present according to the bill of materials before beginning the installation.

If something is missing call Tech Support at 1- 800-486-0999

Bill of Materials

1	Plastic air box	1	Pro5 or PowerCore filter	1	#48 Clamp	1	#56 Clamp
1	Plastic air duct	1	3.5 x 3 Reducer	2	5/8 Straight fittings	2	4in 5/8 Breather hose
1	Air box lid	4	Truss head screws	4	Rubber washers	1	22in Trim sponge
1	Lid gasket	1	22.5 Trim sponge	1	MAF gasket	1	Nylon Cap
2	MAF sensor screws	1	8mm Bolt	1	8mm Rubber mount	1	8mm Nut
1	5/16 Lock washer	1	3/8 Lock washer	1	3/8 Washer	1	CARB label



Installation Instructions:

1. Before you begin the install you must disconnect the negative battery cable. Failure to disconnect the battery may cause a check engine light or damage to your engine. (Fig A)
 2. Remove the 2 10mm bolts holding the engine cover in place. Save for reinstallation. (Fig B)
 3. Remove the engine cover by pulling up and out. Save for reinstallation. (Fig C)
 4. Loosen the clamp holding the duct to the throttle body. (Fig D)
 5. Loosen the clamp holding the duct to the air box. (Fig E)
 6. Loosen the clamps holding the 2 breather hose lines to the resonator line. Remove the breather hoses. Save for reinstallation. (Fig F)
 7. Remove the factory air duct. Save in case vehicle needs to be returned to stock. (Fig G)
 8. Disconnect the MAF harness from the MAF sensor. (Fig H)
 9. Remove the harness retaining pin from the factory air box. (Fig I)
 10. Remove the vent line retaining pin from the factory air box. (Fig J)
 11. Remove the 10mm bolt holding the air box from the brake booster bracket. Save for reinstallation. (Fig K)
 12. Remove the factory air box by pulling up and out. Save in case vehicle needs to be returned to stock. (Fig L)
 13. Remove the 10mm bolt from the wheel well. Save for reinstallation. (Fig M)
 14. Press the 20in trim sponge onto the Volant box. (Fig N)
 15. If you are not installing Volant's Scoop Part #32856, attach the 3in cap to the RAM air port on the Volant box. (Fig O)
 16. Thread in the 8mm bumper into the lower threaded hole on the wheel well. (Fig P)
 17. Install the Volant box onto the 8mm bumper. (Fig Q)
- WARNING:** Over tightening hardware may alter the integrity of the Volant air intake system.
18. Hand tighten the supplied nut and lock washer onto the lower mount. (Fig R)

CONTINUED ON NEXT PAGE 

19. Tighten the Volant box in place with the supplied 8mm bolt, lock washer and washer then tighten the 8mm nut. **(Fig S)**
20. Slide the 3.5 to 3in reducer onto the Volant duct. **(Fig T)**
21. Place the Pro5 Filter#5144 or PowerCore® Filter #61503 into the Volant box then slide the duct into the filter. **(Fig U)**
22. Tighten the filter onto the duct using a 5/16 socket or nut driver only. **(Fig V)**
23. Slide the duct out of the Volant box and press the reducer onto the throttle body. **(Fig W)**
24. Tighten the reducer onto the throttle body using the provided clamps using a 5/16 socket or nut driver. **(Fig X)**
25. Press the two supplied breather hose extensions onto the Volant duct. **(Fig Y)**
26. Connect the factory breather hoses to the extensions using the supplied 5/8 straight fittings. **(Fig Z)**
27. Remove the factory MAF sensor from the factory air box. **(Fig AA)**
28. Remove the factory o-ring from the MAF sensor. **(Fig BB)**
29. Install the supplied MAF gasket onto the factory MAF sensor. **(Fig CC)**
30. Check the orientation of the MAF sensor and place it into the Volant duct. **(Fig DD)**
31. Tighten the sensor onto the Volant duct using the supplied 4mm screws. **(Fig EE)**
32. Reattach the MAF sensor harness onto the sensor. **(Fig FF)**
33. Install the Volant lid using the provided hardware. **(Fig GG)**
34. Attach the supplied CARB label onto the core support in front of the Volant system. **(Fig HH)**
35. Reinstall the engine cover and reconnect the negative battery cable, check all connections before driving and after 500 miles. **(Fig II)**

***Check that this air intake complies with your Federal, State and Local laws. We recommend saving your stock system.**

BEFORE ROAD TESTING

1. Start engine, leaving the transmission in park and securing the parking brake.
2. Make sure to look and listen for any unusual noises or air leaks. Repair problems if needed.
3. Once completed it will be necessary to check periodically, after a few heat cycles, for realignment and tightening of all connections.

CARE AND CLEANING

Check the Pro-5 cotton reusable filter periodically and remove any excessive dirt build-up by tapping the filter on the ground and brushing off the loosened dirt. Clean the filter by using a two stage cleaning kit to thoroughly clean and re-oil the filter. Re-oil every 10,000 miles without cleaning to improve filtering in sand and dirt. Clean only when dirt is very excessive or 20,000 miles.

FOR REPLACEMENT FILTERS REFERENCE PRO5 #5144 or POWERCORE #61503 & CALL 440-891-0999 OR TOLL FREE 1-800-486-0999

PICTURES ON NEXT PAGE



Installation Pictures



Fig. A



Fig. B



Fig. C



Fig. D



Fig. E



Fig. F

CONTINUED ON NEXT PAGE 

Installation Pictures



Fig. G



Fig. H



Fig. I



Fig. J



Fig. K



Fig. L

CONTINUED ON NEXT PAGE 

Installation Pictures

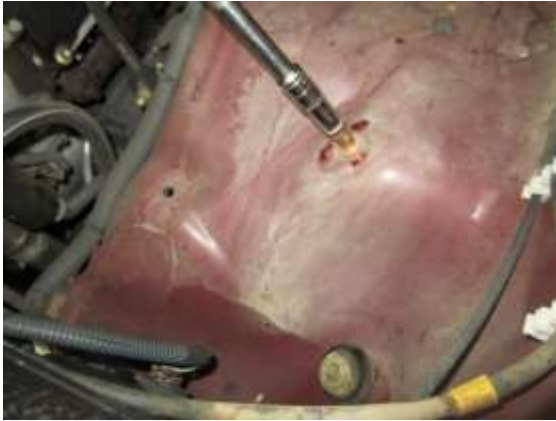


Fig. M



Fig. N



Fig. O



Fig. P



Fig. Q



Fig. R

CONTINUED ON NEXT PAGE 

Installation Pictures



Fig. S



Fig. T



Fig. U



Fig. V



Fig. W



Fig. X

CONTINUED ON NEXT PAGE 

Installation Pictures



Fig. Y

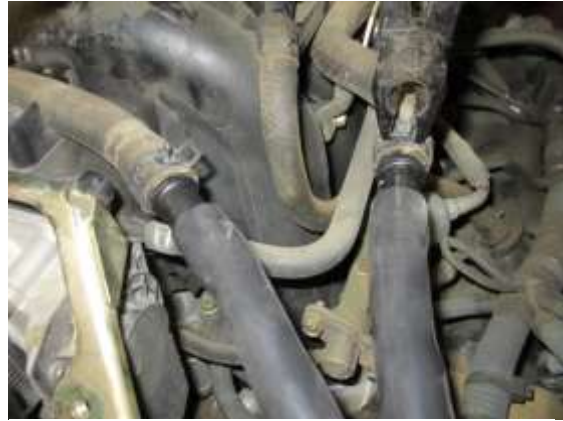


Fig. Z



Fig. AA



Fig. BB



Fig. CC



Fig. DD

CONTINUED ON NEXT PAGE 

Installation Pictures



Fig. EE



Fig. FF



Fig. GG



Fig. HH



Fig. II