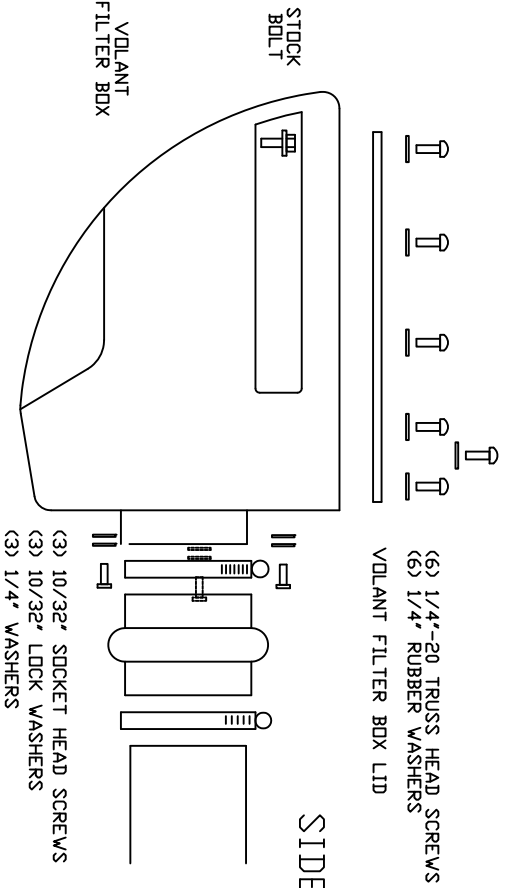
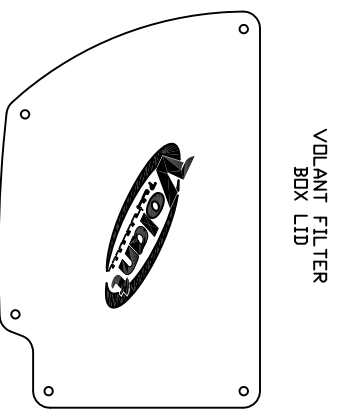


VOLANT COOL AIR INTAKES
 PART NO.: 17636
 INSTALLATION INSTRUCTIONS
 WWW.VOLANTPERFORMANCE.COM
 TECH SUPPORT: (909) 481-3888

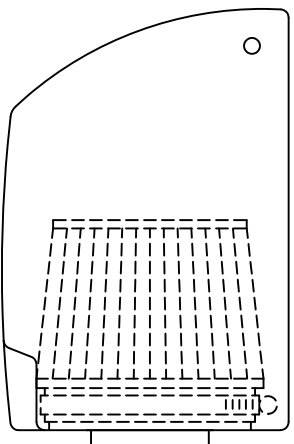
17636 PARTS LIST			
1	VOLANT FILTER BOX	1	3 1/2" X 3" HUMPH HOSE
1	VOLANT FILTER BOX LID	3	10/32" SOCKET HEAD SCREWS
1	VOLANT AIR DUCT	3	10/32" LOCK WASHERS
1	VOLANT FILTER BOX ADAPTER	3	1/4" WASHERS
1	RAM FILTER W/CLAMP	1	1/2" RUBBER GROMMET
4	#056 CLAMPS	4	1/4"-20 TRUSS HEAD SCREWS
1	3 1/4" X 2 1/2" SLEEVE	4	1/4" RUBBER WASHERS



SIDE VIEW

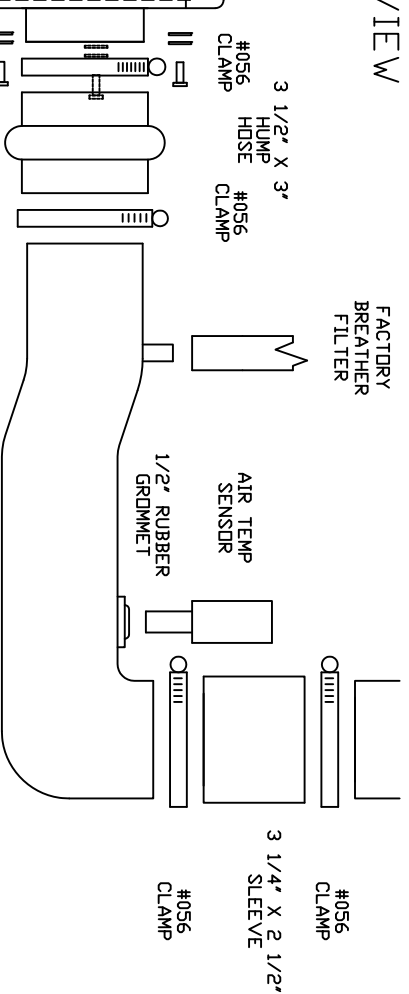


VOLANT FILTER BOX LID



VOLANT FILTER BOX ADAPTER

RAM AIR FILTER W/CLAMP

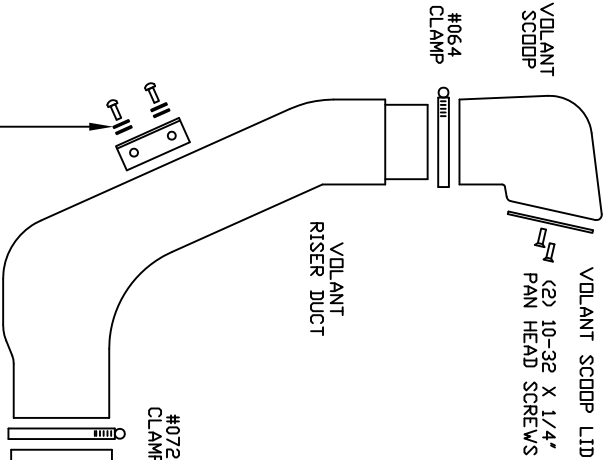
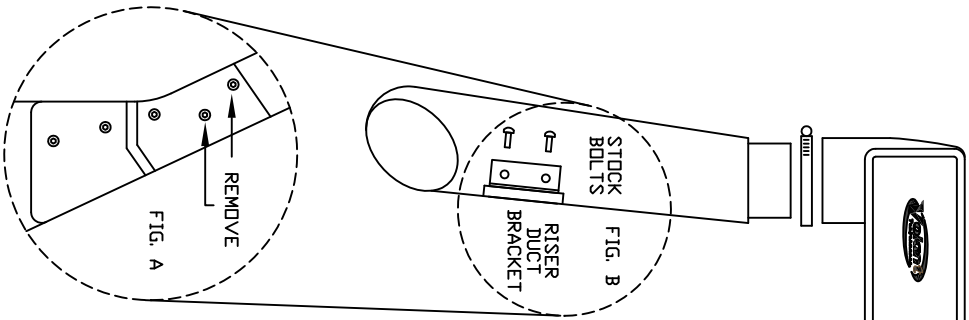


TOP VIEW

THROTTLE BODY

VOLANT COOL AIR INTAKES
 PART NO.: 37638
 INSTALLATION INSTRUCTIONS
 WWW.VOLANT.COM
 TECH SUPPORT: (909) 481-3888

37638 PARTS LIST					
1	VOLANT SCOOP	2	#072 CLAMP	2	1/4" NUTS
1	VOLANT SCOOP LID	1	4" ACCORDIAN SLEEVE	6	1/4"-20 TRUSS HEAD SCREWS
1	VOLANT RISER DUCT	1	VOLANT ADAPTER LID RING	6	1/4" RUBBER WASHERS
1	VOLANT HOOD DUCT	2	1/4"-20 BOLTS	2	10-32 X 1/4" PAN HEAD SCREWS
1	VOLANT ADAPTER LID	6	1/4" LOCK WASHERS	2	1/4"-20 X 1 1/2" SET SCREWS
1	VOLANT FILTER BOX	2	1/4" WASHERS	2	1/4"-20 SOCKET HEAD BOLTS
1	#064 CLAMP	4	7/8" FENDER WASHERS	1	VOLANT RISER DUCT BRACKET



VOLANT ACCORDIAN SLEEVE

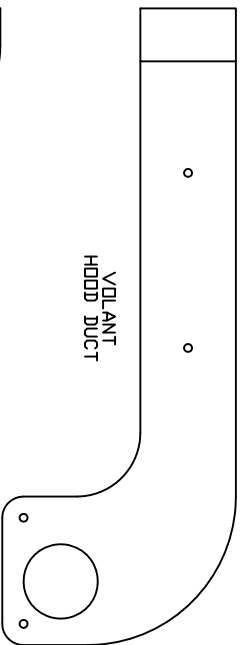
STEP 1: REMOVE THE TWO STOCK BOLTS FROM THE UPPER SECTION OF THE JEEP'S WINDSHIELD HINGE. (SEE FIG. A)

STEP 2: ATTACH THE VOLANT RISER DUCT BRACKET TO UPPER SECTION OF THE JEEP'S WINDSHIELD HINGE USING THE TWO STOCK BOLTS.

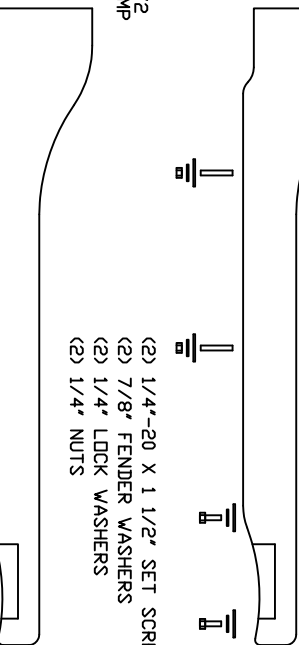
STEP 3: ONCE ATTACHED, SECURE THE VOLANT RISER DUCT TO THE BRACKET WITH:

- (2) 1/4"-20 SOCKET HEAD BOLTS
- (2) 1/4" LOCK WASHERS
- (2) 1/4" WASHERS

(SEE FIG. B)



- (2) 7/8" FENDER WASHERS
- (2) 1/4" LOCK WASHERS
- (2) 1/4"-20 BOLTS



SIDE VIEW

